

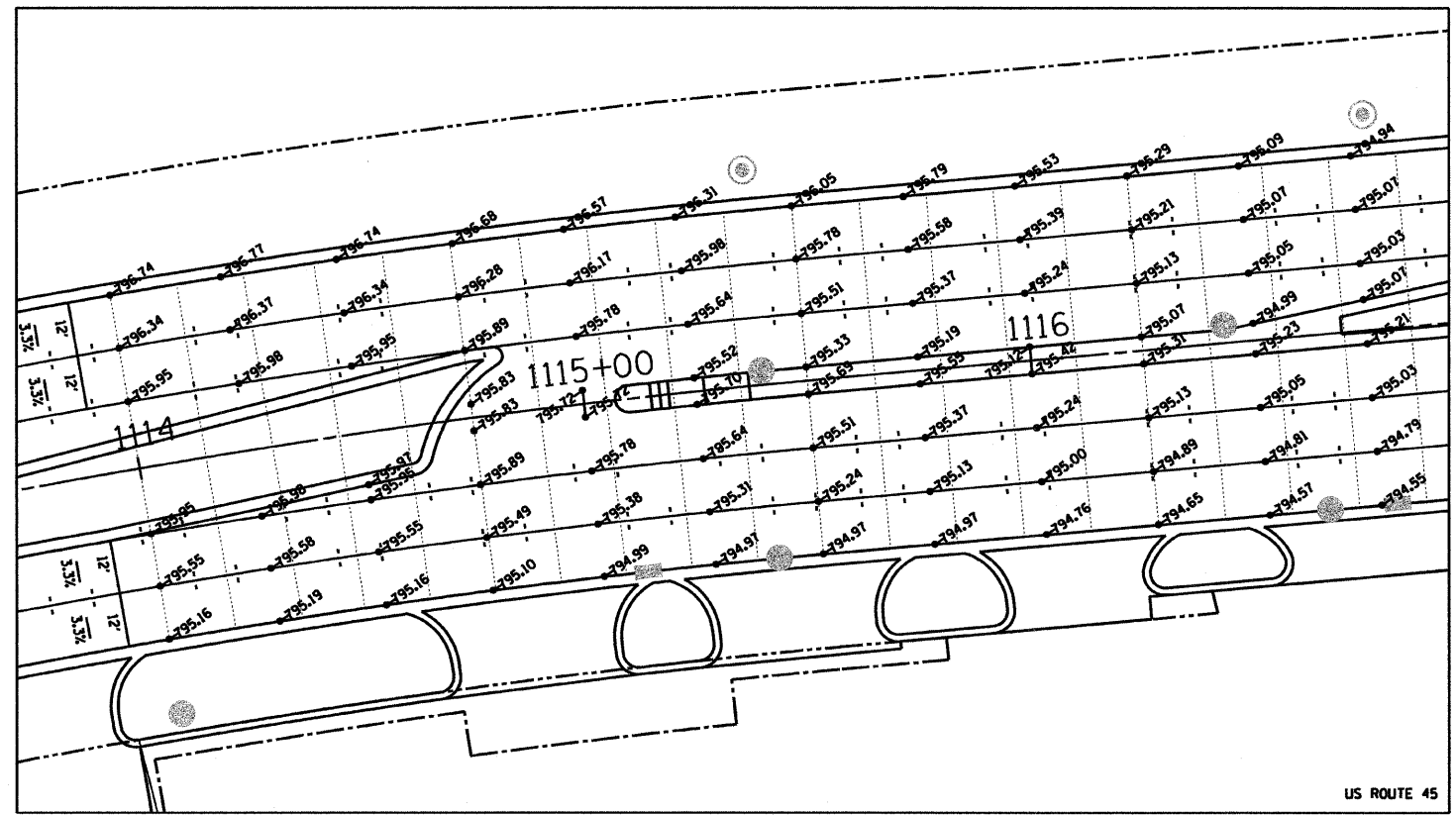
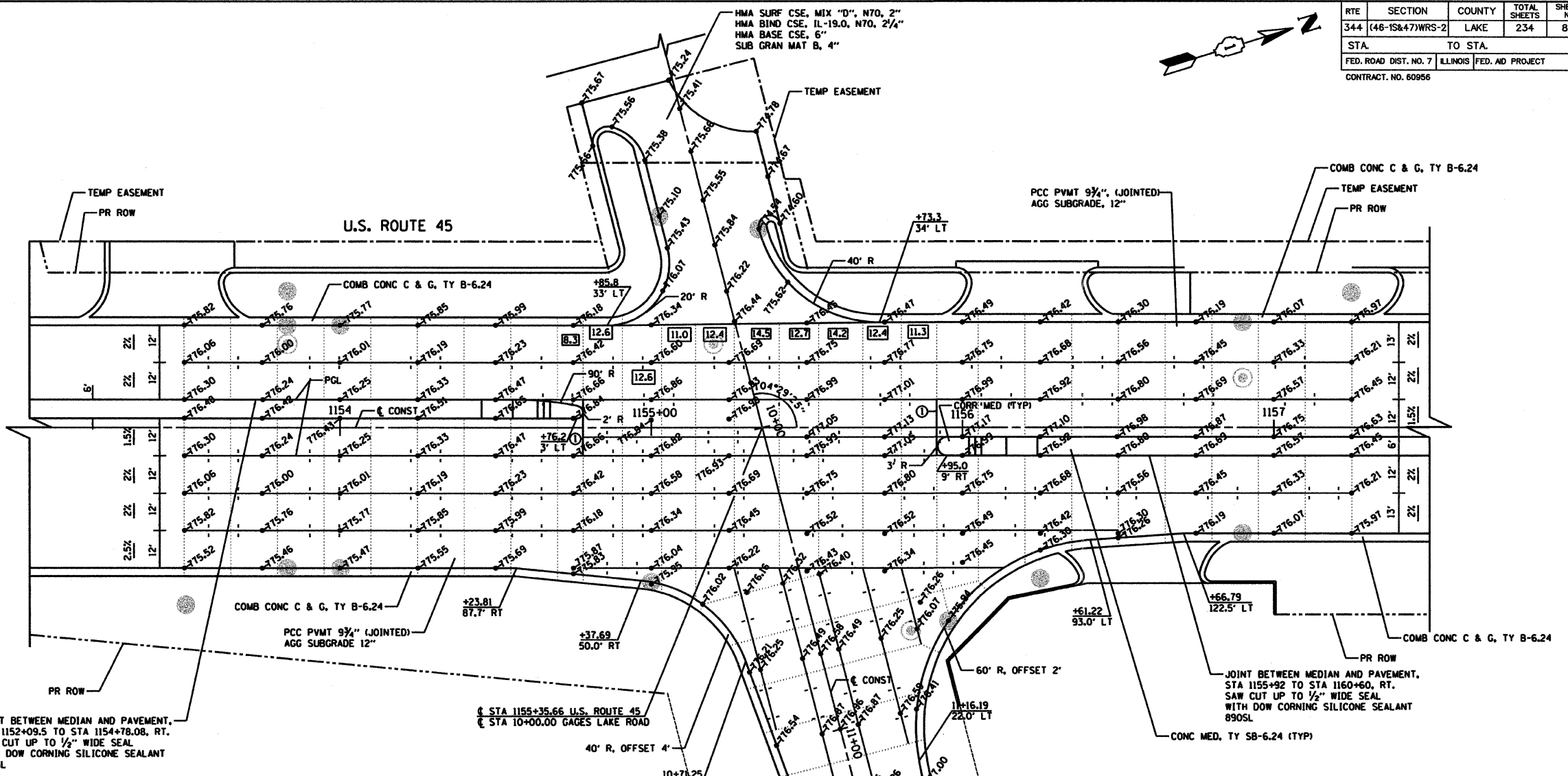
RTE	SECTION	COUNTY	TOTAL SHEETS	SHEET NO
344	(46-1S&47)WRS-2	LAKE	234	89
STA.	TO STA.			
FED. ROAD DIST. NO. 7		ILLINOIS FED. AID PROJECT		
CONTRACT NO. 60956				

LEGEND

- LONGITUDINAL CONSTRUCTION JOINT GROUDED IN PLACE TIE BARS (#8 EPOXY COATED DEFORMED BARS, 2' LONG AT 2' CENTERS) STANDARD 420001
- SAWED CONTRACTION JOINT WITH 1/2" DIA EPOXY COATED SMOOTH DOWEL BAR, 1'-6" LONG AT 1'-0" CENTERS, STANDARDS 420001 AND 420101
- 11.2 LENGTH (IN FEET) OF PAVEMENT PANEL (BETWEEN JOINTS) IF DIFFERENT THAN TYPICAL 15' SEE STANDARD 420101
- 1 1/2" FULL DEPTH TRANSVERSE JOINT (SEE SHEET NO. 86 FOR DETAILS)
- 2 PAVEMENT SEPARATION JOINT-SLEEPER SLAB (SEE SHEET 180 FOR DETAILS)

NOTES:

1. ADDITIONAL SAWED CONTRACTION JOINTS MAY BE REQUIRED IN THE FIELD, AS DIRECTED BY THE ENGINEER. EXACT LOCATIONS TO BE VERIFIED IN THE FIELD AND APPROVED BY THE ENGINEER.
2. PAVEMENT BLOCK-OUTS FOR MANHOLES AND VALVE VAULTS, AS WELL AS INLETS AND CATCH BASINS WITH TYPE 24 FRAME AND GRATES, SHALL BE CONSTRUCTED IN ACCORDANCE WITH STANDARD 420111 AND THE DETAIL SHOWN ON SHEET NO. 178
3. DOWEL BARS SHALL BE INSTALLED IN ACCORDANCE WITH THE DETAILS ON SHEET NO. 180. THE COST OF THE DOWEL BARS SHALL BE CONSIDERED INCLUDED IN THE COST OF PCC PAVEMENT, 9 3/4" (JOINTED).



REVISIONS	
NAME	DATE

ILLINOIS DEPARTMENT OF TRANSPORTATION
INTERSECTION PAVING PLAN
 U. S. ROUTE 45 & GAGES LAKE ROAD

HORIZ. 20 0 20
 SCALE IN FEET

DATE 4/2/10
 DRAWN BY MLB
 CHECKED BY TSB