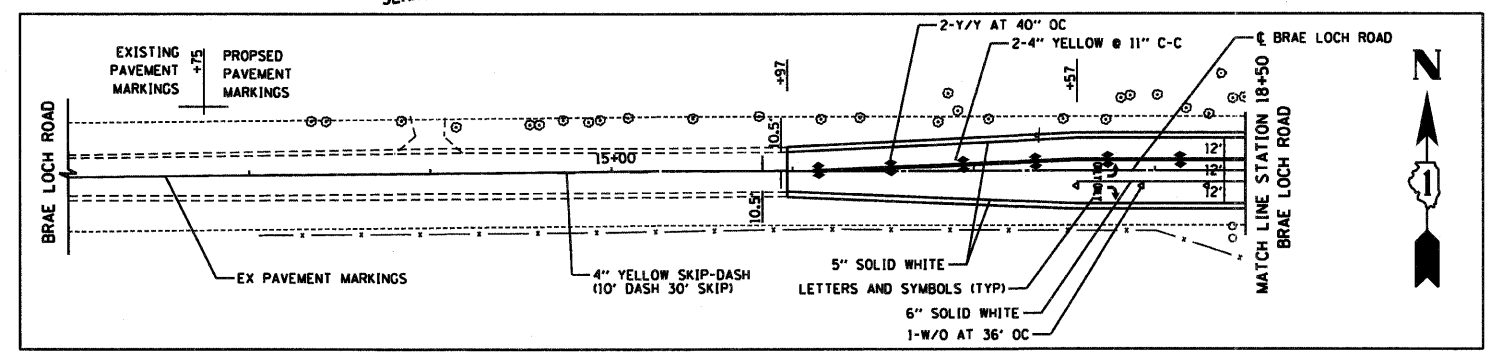
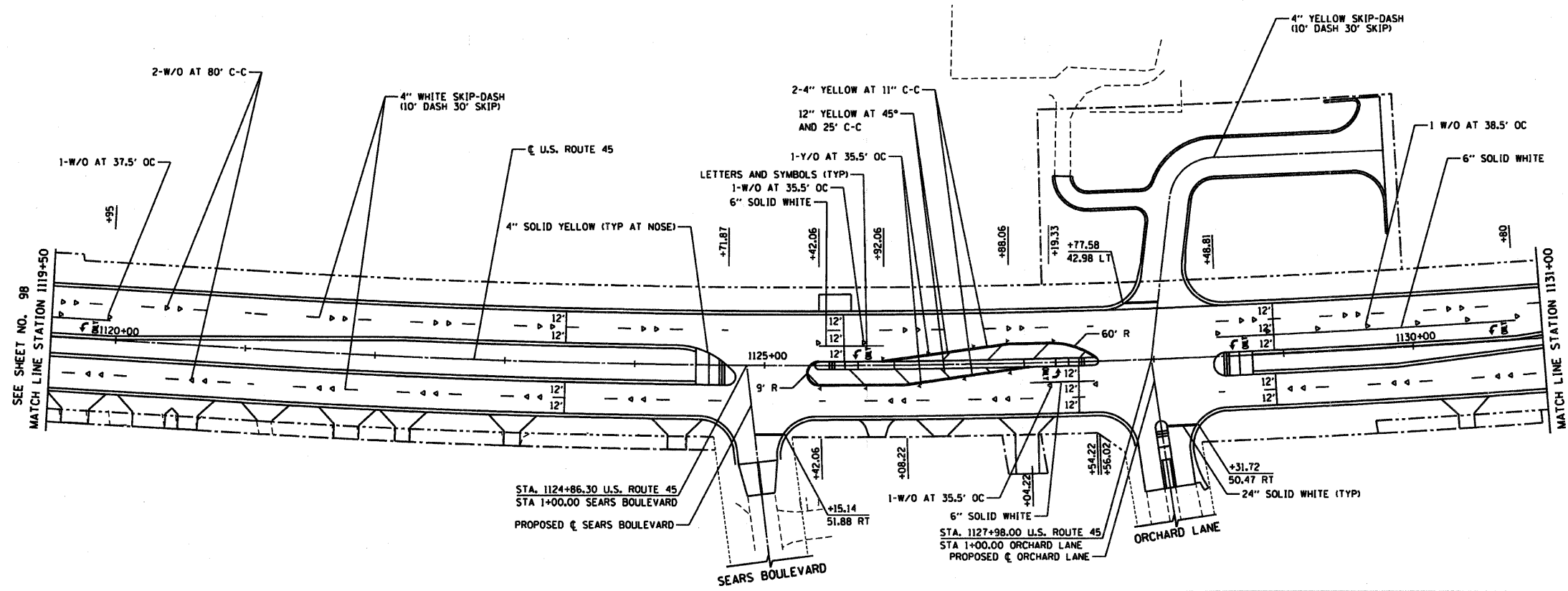
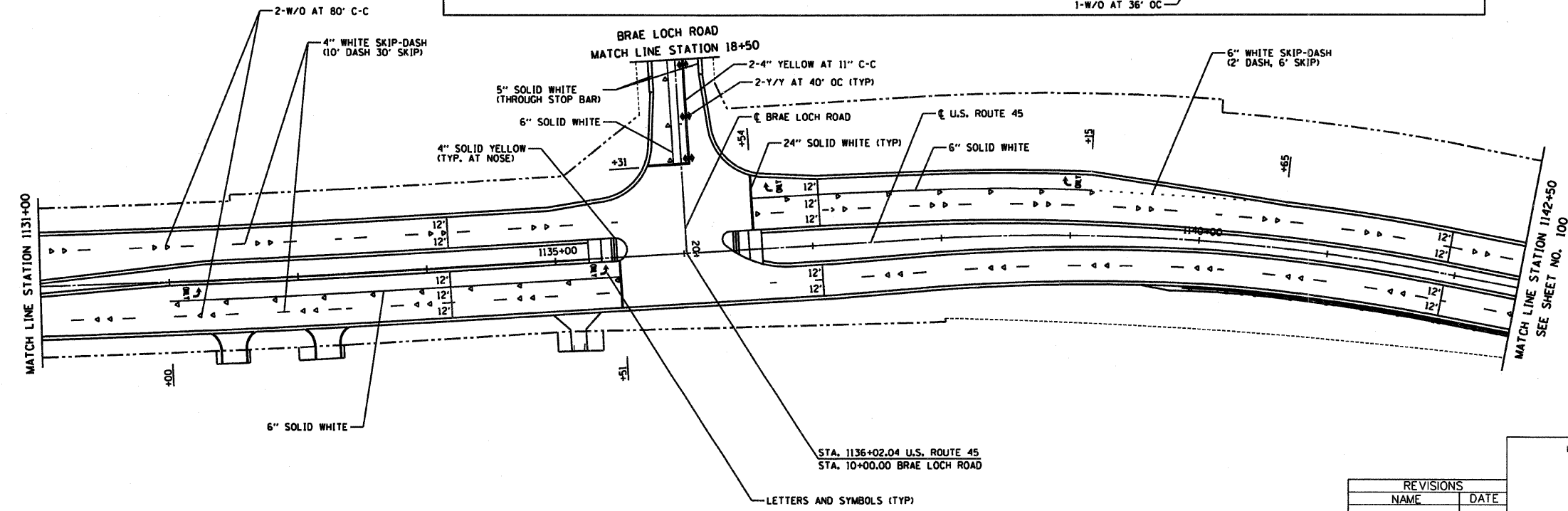


RTE	SECTION	COUNTY	TOTAL SHEETS	SHEET NO
344	(46-15&47)WRS-2	LAKE	234	99
STA.	1119+50	TO STA.	1142+50	
FED. ROAD DIST. NO. 7	ILLINOIS FED. AID PROJECT			
CONTRACT NO. 60956				



FOR LEGEND AND NOTES  
SEE SHEET NO. 98



REVISIONS	
NAME	DATE

ILLINOIS DEPARTMENT OF TRANSPORTATION  
**PAVEMENT MARKING PLAN**  
U.S. ROUTE 45  
STATION 1119+50 TO STATION 1142+50

HORIZ. 50 0 50  
SCALE IN FEET

DATE 12/14/09  
DRAWN BY SAH  
CHECKED BY MJL



12/14/09 - g:\401\2000\0005302\cadd\PM\_11950.SHT