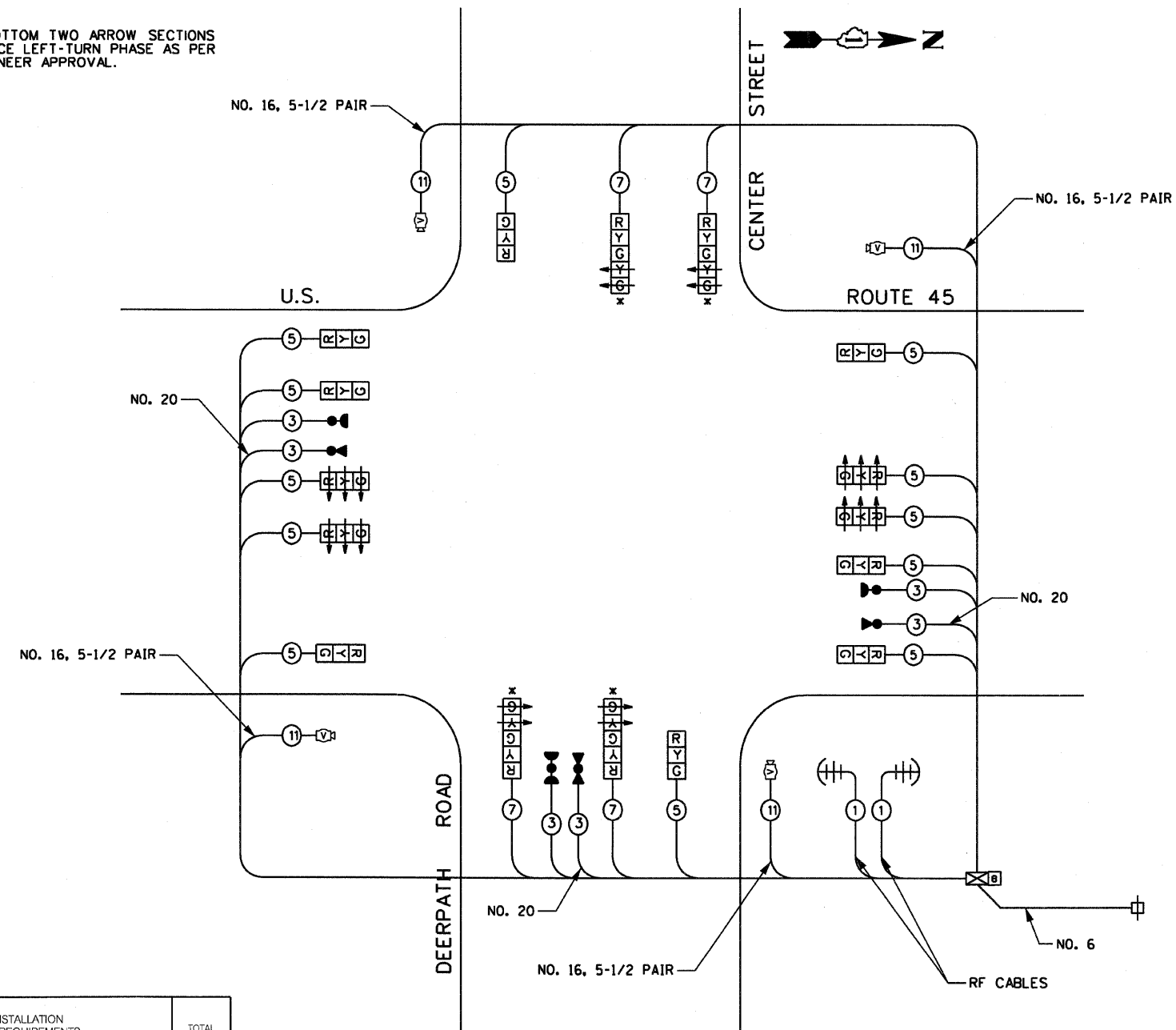


RTE	SECTION	COUNTY	TOTAL SHEETS	SHEET NO
344	(46-1S&47)WRS-2	LAKE	234	131
STA.		TO STA.		
FED. ROAD DIST. NO. 7		ILLINOIS FED. AID PROJECT		
CONTRACT NO. 60956				

THE CONTRACTOR SHALL BE RESPONSIBLE FOR PERFORMING ALL NECESSARY EQUIPMENT AND PHASING CHANGES TO THE INSTALLATION TO COVER THE DIFFERENT SIGNAL HEAD REQUIREMENTS AND SIGNAL PHASING BETWEEN MOT STAGE II AND MOT STAGE III. THE COST OF THIS WORK WILL BE INCLUDED IN THE COST OF TEMPORARY TRAFFIC SIGNAL INSTALLATION.

THE TRAFFIC SIGNAL CONTROL EQUIPMENT FOR THIS PROJECT SHALL BE "EAGLE" TO MATCH THE EXISTING ADJACENT SYSTEM.

\* UNBAG THE BOTTOM TWO ARROW SECTIONS TO REINTRODUCE LEFT-TURN PHASE AS PER RESIDENT ENGINEER APPROVAL.



TEMPORARY CABLE PLAN  
NOT TO SCALE

TEMPORARY CABLE PLAN LEGEND

- ⊞ TEMPORARY UPS
- ⊞ TEMPORARY TRAFFIC SIGNAL SECTION OR PEDESTRIAN SIGNAL SECTION, 12"
- ⊞ TEMPORARY CONTROLLER CABINET
- ⊞ TEMPORARY SERVICE INSTALLATION
- ⑤ INDICATES NUMBER OF CONDUCTORS IN CABLE. ALL CONDUCTORS TO BE NUMBER 14 AWG WIRE UNLESS OTHERWISE NOTED.
- ▶ EMERGENCY VEHICLE LIGHT DETECTOR
- ▶ CONFIRMATION BEACON
- ⊞ VIDEO DETECTOR
- ⊞ RADIO INTERCONNECT ANTENNA

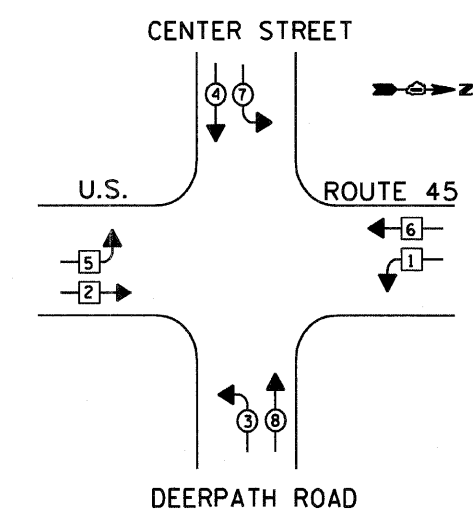
FOUNDATION (DEPTH)	FT. (m)	CABLE SLACK	FT. (m)	VERTICAL	FT. (m)
TYPE A-POST	4 (1.2)	HANDHOLE	6.5 (2.0)	ALL FOUNDATIONS	3.5 (1.0)
C-CONTROLLER	4 (1.2)	DOUBLE HANDHOLE	13 (4.0)	MAST ARM (L) POLE	20+L-2=
E-MAST ARM POLE	24" (600 mm)	SIGNAL POST	2 (4.0)	(6m+L-0.6m)=	
30" (750 mm)	10 (3.0)	CONTROLLER CAB.	1 (0.5)	BRACKET MOUNTED	13 (4.0)
36" (900 mm)	15 (4.6)	FIBER OPTIC	13 (4.0)	PED. PUSHBUTTON	4 (1.2)
		ELECTRIC SERVICE	1 (0.5)	ELECTRIC SERVICE	13.5 (4.1)
		GROUND CABLE	1 (0.5)	SERVICE TO GROUND	13.5 (4.1)
				POST MOUNTED	6 (1.8)

I.D.O.T. TRAFFIC SIGNAL INSTALLATION ELECTRICAL SERVICE REQUIREMENTS					TOTAL WATTAGE
TYPE	NO LAMPS	x WATTAGE		x % OPERATION	
		INCAND.	LED		
SIGNAL (RED)	16	135	17	0.50	136
(YELLOW)	16	135	25	0.25	100
(GREEN)	16	135	15	0.25	60
ARROW	8	135	12	0.10	10
PED. SIGNAL	0	90	25	1.00	0
CONTROLLER	1	100	100	1.00	100
ILLUM. SIGN		64		0.05	0
FLASHER	0			0.50	0
TOTAL =					406

ENERGY COSTS TO:  
ILLINOIS DEPARTMENT OF TRANSPORTATION  
201 W. CENTER COURT  
SHAUMBURG, IL 60196

ENERGY SUPPLY CONTACT: MS. LOIS HICKS  
PHONE: (847) 816-5489  
COMPANY: COMMONWEALTH EDISON COMPANY

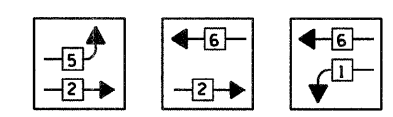
TEMPORARY CONTROLLER SEQUENCE



- LEGEND
- ⊞ DUAL ENTRY PHASE
  - ⊞ SINGLE ENTRY PHASE
  - x NUMBER REFERS TO ASSOCIATED PHASE

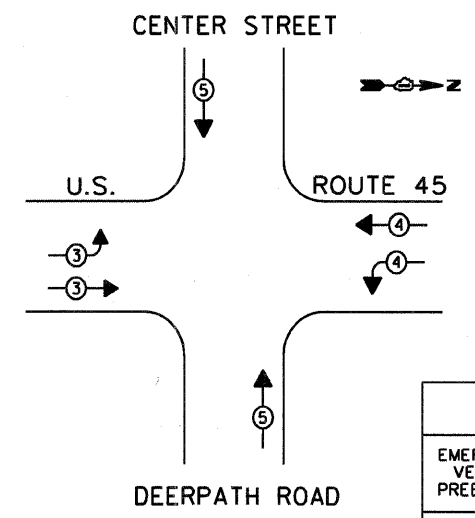
PHASE DESIGNATION DIAGRAM

FOR PHASES 1, 2, 5 & 6 IN THE PHASE DESIGNATION DIAGRAM SHOWN ABOVE, THE FOLLOWING PHASE SEQUENCE WILL BE FOLLOWED:



PHASES 3, 4, 7 & 8 WILL FOLLOW THE STANDARD SEQUENCE IN ACCORDANCE WITH STATE STANDARD 857001.

TEMPORARY EMERGENCY VEHICLE PREEMPTION SEQUENCE



TEMPORARY EMERGENCY VEHICLE PREEMPTORS				
EMERGENCY VEHICLE PREEMPTOR	3	4	5	
MOVEMENT	↔	↔	↕	

ILLINOIS DEPARTMENT OF TRANSPORTATION  
TEMPORARY TRAFFIC SIGNAL CABLE PLAN  
PHASE DESIGNATION DIAGRAM  
U.S. ROUTE 45 & CENTER STREET/DEERPATH ROAD  
STAGE III

HORIZ. 10 0 10  
SCALE IN FEET

REVISIONS  
NAME DATE

DATE 12/14/09  
DRAWN BY MB/AJP  
CHECKED BY KMM



12/14/09 - g:\401\2000\0005302\conf\shah\tempcabcenter\_90.sht