

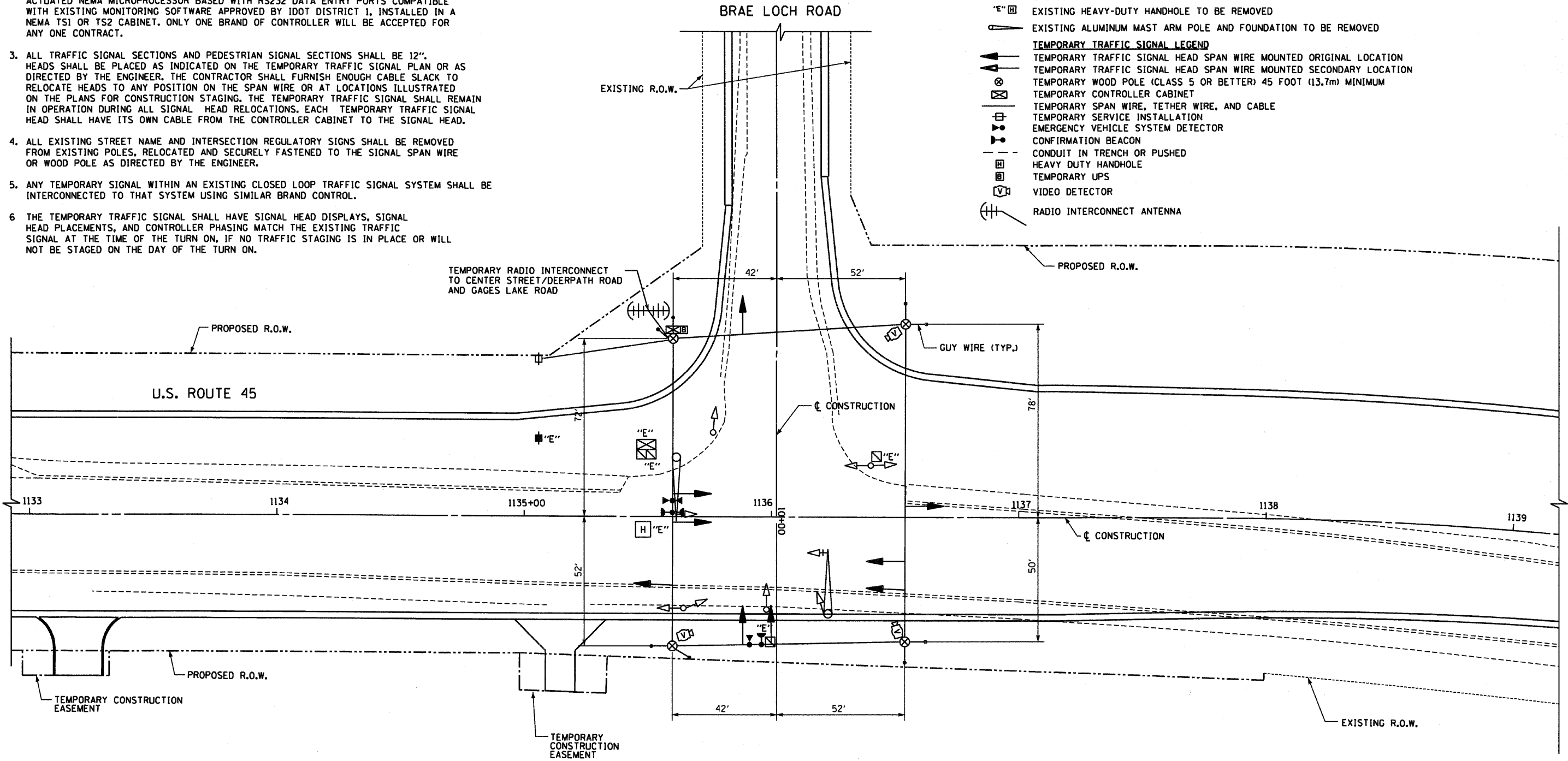
RTE	SECTION	COUNTY	TOTAL SHEETS	SHEET NO
344	(46-15&47)WRS-2	LAKE	234	134
STA.		TO STA.		
FED. ROAD DIST. NO. 7		ILLINOIS	FED. AID PROJECT	
CONTRACT NO. 60956				

NOTES FOR TEMPORARY TRAFFIC SIGNALS

1. ALL CONTROL EQUIPMENT INCLUDING EMERGENCY PRE-EMPTION AND COMMUNICATION DEVICES FOR THE TEMPORARY TRAFFIC SIGNAL(S) SHALL BE FURNISHED BY THE CONTRACTOR.
2. ONLY CONTROLLERS SUPPLIED BY ONE OF THE DISTRICT APPROVED CLOSED LOOP EQUIPMENT MANUFACTURERS WILL BE APPROVED FOR USE AT TEMPORARY SIGNAL LOCATIONS. ALL CONTROLLERS USED FOR TEMPORARY TRAFFIC SIGNALS SHALL BE FULLY ACTUATED NEMA MICROPROCESSOR BASED WITH RS232 DATA ENTRY PORTS COMPATIBLE WITH EXISTING MONITORING SOFTWARE APPROVED BY IDOT DISTRICT 1, INSTALLED IN A NEMA TS1 OR TS2 CABINET. ONLY ONE BRAND OF CONTROLLER WILL BE ACCEPTED FOR ANY ONE CONTRACT.
3. ALL TRAFFIC SIGNAL SECTIONS AND PEDESTRIAN SIGNAL SECTIONS SHALL BE 12". HEADS SHALL BE PLACED AS INDICATED ON THE TEMPORARY TRAFFIC SIGNAL PLAN OR AS DIRECTED BY THE ENGINEER. THE CONTRACTOR SHALL FURNISH ENOUGH CABLE SLACK TO RELOCATE HEADS TO ANY POSITION ON THE SPAN WIRE OR AT LOCATIONS ILLUSTRATED ON THE PLANS FOR CONSTRUCTION STAGING. THE TEMPORARY TRAFFIC SIGNAL SHALL REMAIN IN OPERATION DURING ALL SIGNAL HEAD RELOCATIONS. EACH TEMPORARY TRAFFIC SIGNAL HEAD SHALL HAVE ITS OWN CABLE FROM THE CONTROLLER CABINET TO THE SIGNAL HEAD.
4. ALL EXISTING STREET NAME AND INTERSECTION REGULATORY SIGNS SHALL BE REMOVED FROM EXISTING POLES, RELOCATED AND SECURELY FASTENED TO THE SIGNAL SPAN WIRE OR WOOD POLE AS DIRECTED BY THE ENGINEER.
5. ANY TEMPORARY SIGNAL WITHIN AN EXISTING CLOSED LOOP TRAFFIC SIGNAL SYSTEM SHALL BE INTERCONNECTED TO THAT SYSTEM USING SIMILAR BRAND CONTROL.
6. THE TEMPORARY TRAFFIC SIGNAL SHALL HAVE SIGNAL HEAD DISPLAYS, SIGNAL HEAD PLACEMENTS, AND CONTROLLER PHASING MATCH THE EXISTING TRAFFIC SIGNAL AT THE TIME OF THE TURN ON, IF NO TRAFFIC STAGING IS IN PLACE OR WILL NOT BE STAGED ON THE DAY OF THE TURN ON.

THE TRAFFIC SIGNAL CONTROL EQUIPMENT FOR THIS PROJECT SHALL BE "EAGLE" TO MATCH THE EXISTING ADJACENT SYSTEM.

- EXISTING EQUIPMENT TO BE REMOVED LEGEND**
- ▲ EXISTING SIGNAL HEAD TO BE REMOVED
 - ⊕ EXISTING SERVICE INSTALLATION TO BE REMOVED
 - EXISTING SIGNAL POST AND FOUNDATION TO BE REMOVED
 - ⊗ EXISTING CONTROLLER AND FOUNDATION TO BE REMOVED
 - ⊘ EXISTING HANDHOLE TO BE REMOVED
 - ⊙ EXISTING EMERGENCY VEHICLE LIGHT DETECTOR TO BE REMOVED
 - ⊚ EXISTING HEAVY-DUTY HANDHOLE TO BE REMOVED
 - ⊛ EXISTING ALUMINUM MAST ARM POLE AND FOUNDATION TO BE REMOVED
- TEMPORARY TRAFFIC SIGNAL LEGEND**
- ▲ TEMPORARY TRAFFIC SIGNAL HEAD SPAN WIRE MOUNTED ORIGINAL LOCATION
 - ⊕ TEMPORARY TRAFFIC SIGNAL HEAD SPAN WIRE MOUNTED SECONDARY LOCATION
 - ⊗ TEMPORARY WOOD POLE (CLASS 5 OR BETTER) 45 FOOT (13.7m) MINIMUM
 - ⊘ TEMPORARY CONTROLLER CABINET
 - ⊙ TEMPORARY SPAN WIRE, TETHER WIRE, AND CABLE
 - ⊚ TEMPORARY SERVICE INSTALLATION
 - ⊛ TEMPORARY EMERGENCY VEHICLE SYSTEM DETECTOR
 - ⊜ CONFIRMATION BEACON
 - ⊝ CONDUIT IN TRENCH OR PUSHED
 - ⊞ HEAVY DUTY HANDHOLE
 - ⊟ TEMPORARY UPS
 - ⊠ VIDEO DETECTOR
 - ⊡ RADIO INTERCONNECT ANTENNA



THE FOLLOWING ITEMS SHALL BE REMOVED BY THE CONTRACTOR AND SHALL BE DISPOSED OF BY THEM OUTSIDE THE RIGHT-OF-WAY AT THEIR EXPENSE. THE SALVAGE VALUE OF THE REMOVED EQUIPMENT SHALL BE REFLECTED IN THE CONTRACT BID PRICE.

- 1 EACH CONTROLLER AND CABINET (COMPLETE)
- 3 EACH INDUCTION LOOP AMPLIFIERS
- 2 EACH ALUMINUM MAST ARM ASSEMBLY AND POLE
- 4 EACH SIGNAL POSTS
- 9 EACH SIGNAL HEADS
- 2 EACH TRAFFIC SIGNAL BACKPLATES
- 1 EACH SERVICE INSTALLATION

THE CONTRACTOR SHALL BE RESPONSIBLE FOR PERFORMING ALL NECESSARY EQUIPMENT AND PHASING CHANGES TO THE INSTALLATION TO COVER THE DIFFERENT SIGNAL HEAD REQUIREMENTS AND SIGNAL PHASING BETWEEN MOT STAGE II AND MOT STAGE III. THE COST OF THIS WORK WILL BE INCLUDED IN THE COST OF TEMPORARY TRAFFIC SIGNAL INSTALLATION.

REVISIONS	
NAME	DATE

ILLINOIS DEPARTMENT OF TRANSPORTATION

TEMPORARY TRAFFIC SIGNAL INSTALLATION & TRAFFIC SIGNAL EQUIPMENT REMOVAL PLAN

U.S. ROUTE 45 & BRAE LOCH ROAD
STAGES I & II

HORIZ: 20 0 20
SCALE IN FEET

DATE: 12/14/09
DRAWN BY: MB/AJP
CHECKED BY: KMM



12/14/09 - 40120000.0005302.cad\SHAFT\light\asbch_93.sht