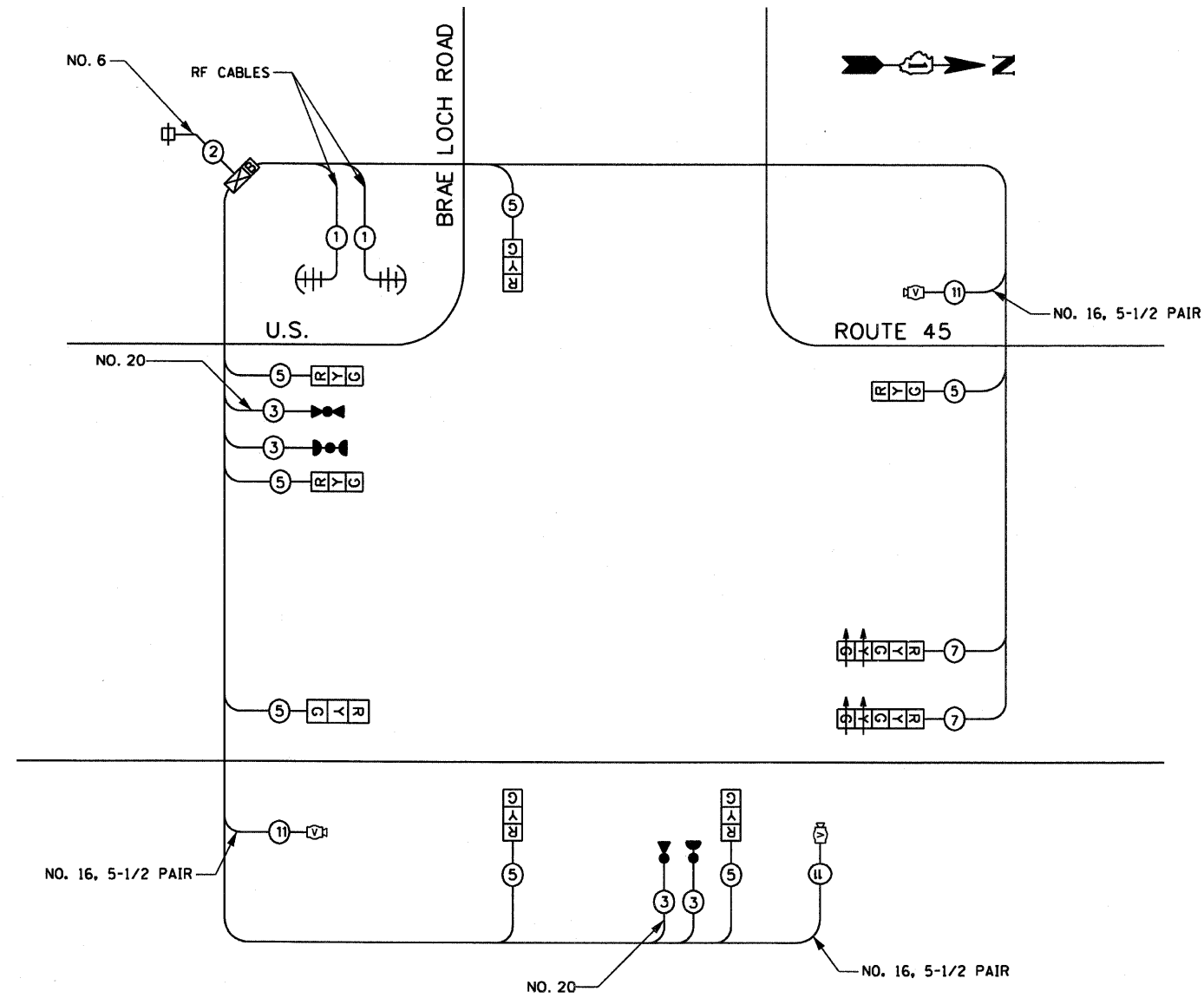


RTE	SECTION	COUNTY	TOTAL SHEETS	SHEET NO
344	(46-1S&47)WRS-2	LAKE	234	136
STA.		TO STA.		
FED. ROAD DIST. NO. 7		ILLINOIS	FED. AID PROJECT	
CONTRACT NO. 60956				

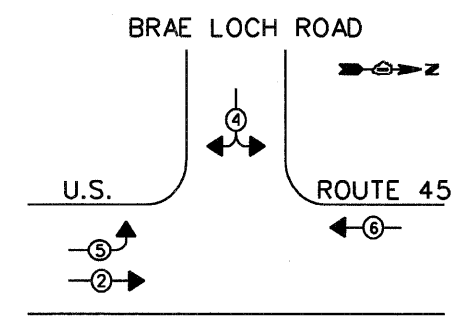
THE CONTRACTOR SHALL BE RESPONSIBLE FOR PERFORMING ALL NECESSARY EQUIPMENT AND PHASING CHANGES TO THE INSTALLATION TO COVER THE DIFFERENT SIGNAL HEAD REQUIREMENTS AND SIGNAL PHASING BETWEEN MOT STAGE II AND MOT STAGE III. THE COST OF THIS WORK WILL BE INCLUDED IN THE COST OF TEMPORARY TRAFFIC SIGNAL INSTALLATION.

THE TRAFFIC SIGNAL CONTROL EQUIPMENT FOR THIS PROJECT SHALL BE "EAGLE" TO MATCH THE EXISTING ADJACENT SYSTEM.



TEMPORARY CABLE PLAN  
NOT TO SCALE

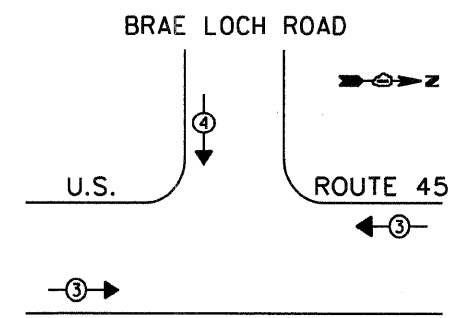
TEMPORARY CONTROLLER SEQUENCE



PHASE DESIGNATION DIAGRAM

**LEGEND**  
 VEHICULAR MOVEMENT  
 \* NUMBER REFERS TO ASSOCIATED PHASE

TEMPORARY EMERGENCY VEHICLE PREEMPTION SEQUENCE



TEMPORARY CABLE DIAGRAM LEGEND

- TEMPORARY TRAFFIC SIGNAL SECTION OR PEDESTRIAN SIGNAL SECTION, 12"
- TEMPORARY CONTROLLER CABINET
- TEMPORARY SERVICE INSTALLATION
- INDICATES NUMBER OF CONDUCTORS IN CABLE. ALL CONDUCTORS TO BE NUMBER 14 AWG WIRE UNLESS OTHERWISE NOTED.
- EMERGENCY VEHICLE LIGHT DETECTOR
- CONFIRMATION BEACON
- VIDEO DETECTOR
- TEMPORARY UPS
- RADIO INTERCONNECT ANTENNA

TEMPORARY EMERGENCY VEHICLE PREEMPTORS			
EMERGENCY VEHICLE PREEMPTOR	3	4	
MOVEMENT	← →	↓	

I.D.O.T. TRAFFIC SIGNAL INSTALLATION ELECTRICAL SERVICE REQUIREMENTS						TOTAL WATTAGE
TYPE	NO LAMPS	x WATTAGE		x % OPERATION		
		INCAND.	LED			
SIGNAL (RED)	9	135	17	0.50	77	
(YELLOW)	9	135	25	0.25	56	
(GREEN)	9	135	15	0.25	34	
ARROW	2	135	12	0.10	3	
PED. SIGNAL	0	90	25	1.00	0	
CONTROLLER	1	100	100	1.00	100	
ILLUM. SIGN		64		0.05	0	
FLASHER	0			0.50	0	
TOTAL =					270	

ENERGY COSTS TO:  
 ILLINOIS DEPARTMENT OF TRANSPORTATION  
 201 W. CENTER COURT  
 SHALMBURG, IL 60196

CONTACT: MS. LOIS HICKS  
 PHONE: (847) 816-5489  
 COMPANY: COMMONWEALTH EDISON COMPANY

FOUNDATION (DEPTH)	FT. (m)	CABLE SLACK	FT. (m)	VERTICAL	FT. (m)
TYPE A-POST	4 (1.2)	HANDHOLE	6.5 (2.0)	ALL FOUNDATIONS	3.5 (1.0)
C-CONTROLLER	4 (1.2)	DOUBLE HANDHOLE	13 (4.0)	MAST ARM (L) POLE	20+L-2=
E-MAST ARM POLE	24" (600 mm)	SIGNAL POST	2 (4.0)	(6m+L-0.6m)=	
24" (600 mm)	10 (3.0)	CONTROLLER CAB.	1 (0.5)		
30" (750 mm)	15 (4.6)	FIBER OPTIC	13 (4.0)	BRACKET MOUNTED	13 (4.0)
36" (900 mm)	15 (4.6)	ELECTRIC SERVICE	1 (0.5)	PED. PUSHBUTTON	4 (1.2)
		GROUND CABLE	1 (0.5)	ELECTRIC SERVICE	13.5 (4.1)
				SERVICE TO GROUND	13.5 (4.1)
				POST MOUNTED	6 (1.8)

ILLINOIS DEPARTMENT OF TRANSPORTATION  
**TEMPORARY TRAFFIC SIGNAL CABLE PLAN**  
 PHASE DESIGNATION DIAGRAM  
 U.S. ROUTE 45 & BRAE LOCH ROAD  
 STAGES I & II

REVISIONS  
 NAME DATE

HORIZ. 10 0 10  
 SCALE IN FEET

DATE 12/14/09  
 DRAWN BY MB/AJP  
 CHECKED BY KMM