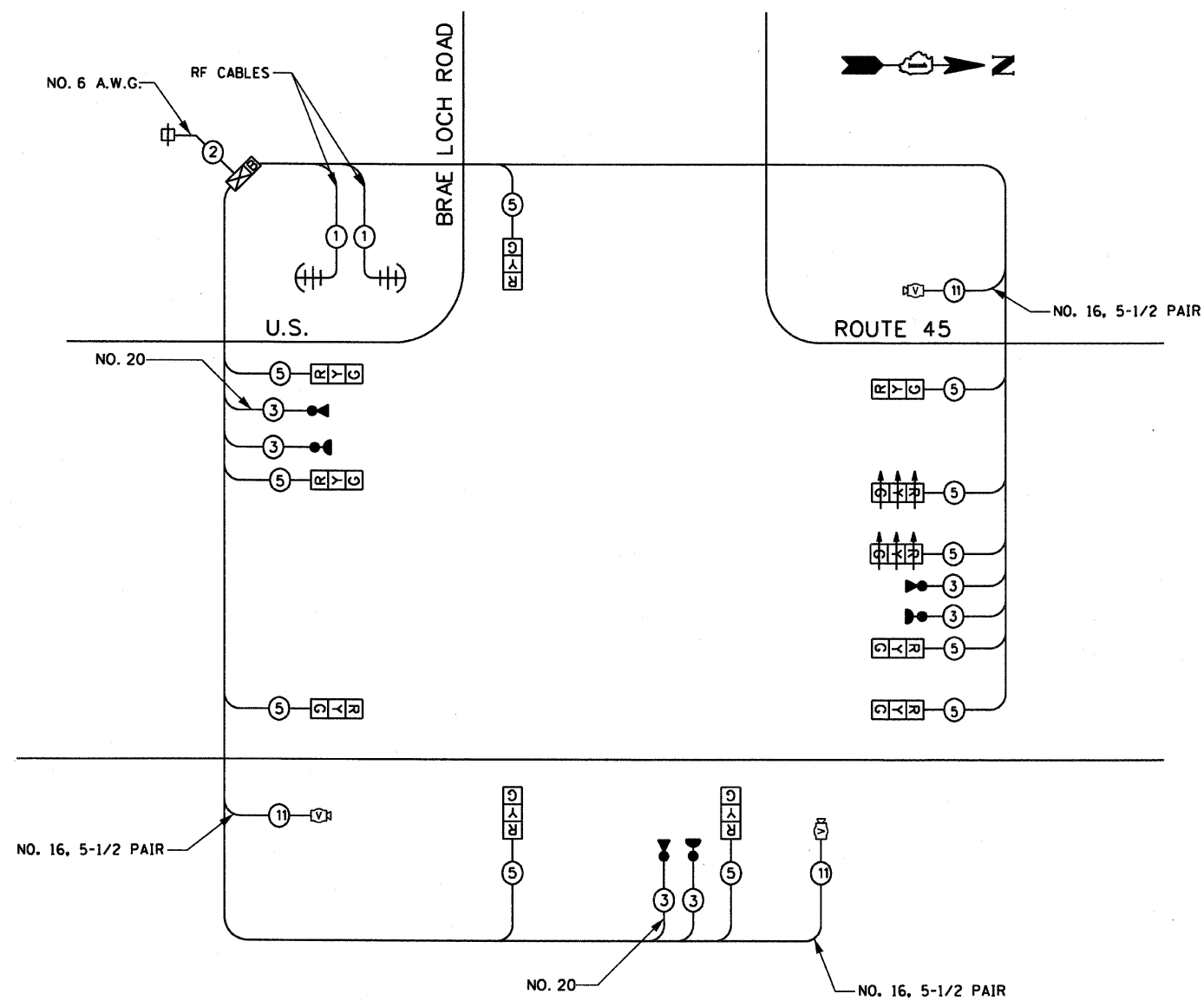


RTE	SECTION	COUNTY	TOTAL SHEETS	SHEET NO
344	(46-1S&47)WRS-2	LAKE	234	138
STA.		TO STA.		
FED. ROAD DIST. NO. 7		ILLINOIS FED. AID PROJECT		
CONTRACT NO. 60956				

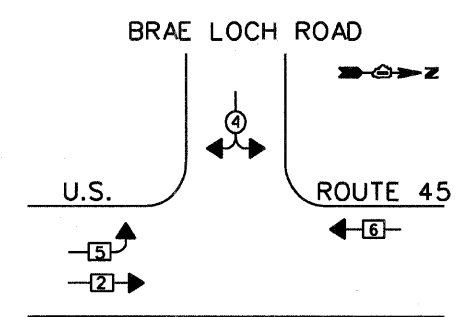
THE CONTRACTOR SHALL BE RESPONSIBLE FOR PERFORMING ALL NECESSARY EQUIPMENT AND PHASING CHANGES TO THE INSTALLATION TO COVER THE DIFFERENT SIGNAL HEAD REQUIREMENTS AND SIGNAL PHASING BETWEEN MOT STAGE II AND MOT STAGE III. THE COST OF THIS WORK WILL BE INCLUDED IN THE COST OF TEMPORARY TRAFFIC SIGNAL INSTALLATION.

THE TRAFFIC SIGNAL CONTROL EQUIPMENT FOR THIS PROJECT SHALL BE "EAGLE" TO MATCH THE EXISTING ADJACENT SYSTEM.



TEMPORARY CABLE PLAN  
NOT TO SCALE

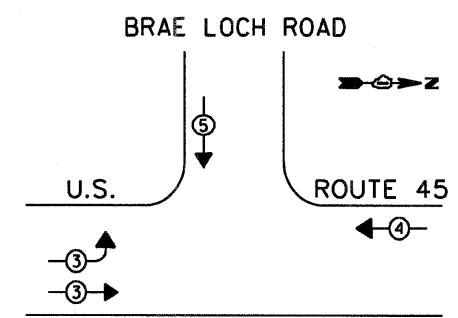
TEMPORARY CONTROLLER SEQUENCE



PHASE DESIGNATION DIAGRAM

**LEGEND**  
 ⊕ ← → DUAL ENTRY PHASE  
 ⊕ ← → SINGLE ENTRY PHASE  
 \* NUMBER REFERS TO ASSOCIATED PHASE

TEMPORARY EMERGENCY VEHICLE PREEMPTION SEQUENCE



I.D.O.T. TRAFFIC SIGNAL INSTALLATION ELECTRICAL SERVICE REQUIREMENTS					TOTAL WATTAGE	
TYPE	NO. LAMPS	x WATTAGE		x % OPERATION		
SIGNAL	(RED)	11	135	17	0.50	94
	(YELLOW)	11	135	25	0.25	69
	(GREEN)	11	135	15	0.25	41
ARROW	0	135	12	0.10	0	
PED. SIGNAL	0	90	25	1.00	0	
CONTROLLER	1	100	100	1.00	100	
ILLUM. SIGN		64		0.05	0	
TOTAL =					304	

ENERGY COSTS TO:  
 ILLINOIS DEPARTMENT OF TRANSPORTATION  
 201 W. CENTER COURT  
 SHAUMBURG, IL 60196  
 CONTACT: MS. LOIS HICKS  
 PHONE: (847) 816-5489  
 COMPANY: COMMONWEALTH EDISON COMPANY

FOUNDATION (DEPTH)	FT. (m)	CABLE SLACK	FT. (m)	VERTICAL	FT. (m)
TYPE A-POST	4 (1.2)	HANDHOLE	6.5 (2.0)	ALL FOUNDATIONS	3.5 (1.0)
C-CONTROLLER	4 (1.2)	DOUBLE HANDHOLE	13 (4.0)	MAST ARM (L) POLE	20+L-2=
E-MAST ARM POLE		SIGNAL POST	2 (4.0)		(6m+L-0.6m)=
24" (600 mm)	10 (3.0)	CONTROLLER CAB.	1 (0.5)	BRACKET MOUNTED	13 (4.0)
30" (750 mm)	15 (4.6)	FIBER OPTIC	13 (4.0)	PED. PUSHBUTTON	4 (1.2)
36" (900 mm)	15 (4.6)	ELECTRIC SERVICE	1 (0.5)	ELECTRIC SERVICE	13.5 (4.1)
		GROUND CABLE	1 (0.5)	SERVICE TO GROUND	13.5 (4.1)
				POST MOUNTED	6 (1.8)

TEMPORARY CABLE DIAGRAM LEGEND

- ⊕ TEMPORARY TRAFFIC SIGNAL SECTION OR PEDESTRIAN SIGNAL SECTION, 12"
- ⊕ TEMPORARY CONTROLLER CABINET
- ⊕ TEMPORARY SERVICE INSTALLATION
- ⊕ INDICATES NUMBER OF CONDUCTORS IN CABLE. ALL CONDUCTORS TO BE NUMBER 14 AWG WIRE UNLESS OTHERWISE NOTED.
- ▶ EMERGENCY VEHICLE LIGHT DETECTOR
- ▶ CONFIRMATION BEACON
- ⊕ VIDEO DETECTOR
- ⊕ TEMPORARY UPS
- ⊕ RADIO INTERCONNECT ANTENNA

TEMPORARY EMERGENCY VEHICLE PREEMPTORS				
EMERGENCY VEHICLE PREEMPTOR	3	4	5	
MOVEMENT	→	←	↓	

REVISIONS	
NAME	DATE

ILLINOIS DEPARTMENT OF TRANSPORTATION  
**TEMPORARY TRAFFIC SIGNAL CABLE PLAN**  
 PHASE DESIGNATION DIAGRAM  
 U.S. ROUTE 45 & BRAE LOCH ROAD  
 STAGE III  
 DATE 12/14/09  
 DRAWN BY MB/AJP  
 CHECKED BY KMM



12/14/09 g:\101-2000-0005302\conf\shah\temp\cable\brae Loch\_96.dwg