

RTE	SECTION	COUNTY	TOTAL SHEETS	SHEET NO
344	(46-15&47)WRS-2	LAKE	234	151
STA.		TO STA.		
FED. ROAD DIST. NO. 7		ILLINOIS	FED. AID PROJECT	
CONTRACT NO. 60956				

THE END OF THE TRACER CABLE SHALL BE CONTINUOUS AND EXTENDS INTO CONTROLLER CABINET

THE TRAFFIC SIGNAL CONTROL EQUIPMENT FOR THIS PROJECT SHALL BE "EAGLE" TO MATCH THE EXISTING ADJACENT SYSTEM.

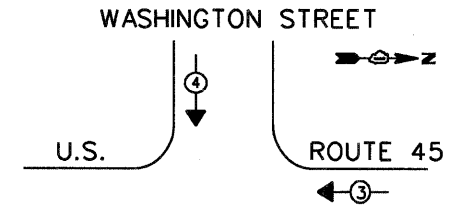
SCHEDULE OF QUANTITIES

QUANTITY	UNIT	ITEM
63	SO. FT.	SIGN PANEL-TYPE 1
898	FOOT	CONDUIT IN TRENCH, 2" DIA., GALVANIZED STEEL
129	FOOT	CONDUIT IN TRENCH, 2 1/2" DIA., GALVANIZED STEEL
154	FOOT	CONDUIT IN TRENCH, 4" DIA., GALVANIZED STEEL
188	FOOT	CONDUIT PUSHED, 2" DIA., GALVANIZED STEEL
342	FOOT	CONDUIT PUSHED, 4" DIA., GALVANIZED STEEL
8	EACH	HANDHOLE
4	EACH	HEAVY-DUTY HANDHOLE
1	EACH	DOUBLE HANDHOLE
300	FOOT	ELECTRIC CABLE IN CONDUIT, SIGNAL NO. 14 3C
3707	FOOT	ELECTRIC CABLE IN CONDUIT, SIGNAL NO. 14 7C
4656	FOOT	ELECTRIC CABLE IN CONDUIT, LEAD IN, NO. 14 1 PAIR
51	FOOT	ELECTRIC CABLE IN CONDUIT, SERVICE, NO. 6 2C
790	FOOT	ELECTRIC CABLE IN CONDUIT, GROUNDING, NO. 6 1C
4	EACH	TRAFFIC SIGNAL POST, 16 FT.
1	EACH	STEEL MAST ARM ASSEMBLY AND POLE, 22 FT.
1	EACH	STEEL MAST ARM ASSEMBLY AND POLE, 28 FT.
1	EACH	STEEL MAST ARM ASSEMBLY AND POLE, 30 FT.
1	EACH	STEEL MAST ARM ASSEMBLY AND POLE, 34 FT.
16	FOOT	CONCRETE FOUNDATION, TYPE A
4	FOOT	CONCRETE FOUNDATION, TYPE C
30	FOOT	CONCRETE FOUNDATION, TYPE E 30-INCH DIAMETER
30	FOOT	CONCRETE FOUNDATION, TYPE E 36-INCH DIAMETER
8	EACH	SIGNAL HEAD, L.E.D., 1-FACE, 5-SECTION, MAST ARM MOUNTED
4	EACH	SIGNAL HEAD, L.E.D., 2-FACE, 5 SECTION, BRACKET MOUNTED
8	EACH	TRAFFIC SIGNAL BACKPLATE, LOUVERED, ALUMINUM
15	EACH	INDUCTIVE LOOP DETECTOR
1197	FOOT	PREFORMED DETECTOR LOOP
1	EACH	TEMPORARY TRAFFIC SIGNAL INSTALLATION
2	EACH	RELOCATE EXISTING EMERGENCY VEHICLE PRIORITY SYSTEM, DETECTOR UNIT
1	EACH	RELOCATE EXISTING EMERGENCY VEHICLE PRIORITY SYSTEM, PHASING UNIT
1	EACH	FULL-ACTUATED CONTROLLER AND TYPE IV CABINET, SPECIAL
1	EACH	TRANSCEIVER-FIBER OPTIC
1	EACH	SERVICE INSTALLATION, POLE MOUNT
1088	FOOT	TRENCH AND BACKFILL FOR ELECTRICAL WORK
1	EACH	REMOVE EXISTING TRAFFIC SIGNAL EQUIPMENT
7	EACH	REMOVE EXISTING HANDHOLE
9	EACH	REMOVE EXISTING CONCRETE FOUNDATION
300	FOOT	ELECTRIC CABLE IN CONDUIT NO. 20 3/C, TWISTED, SHIELDED
1	EACH	UNINTERRUPTIBLE POWER SUPPLY
1	EACH	TEMPORARY TRAFFIC SIGNAL TIMING

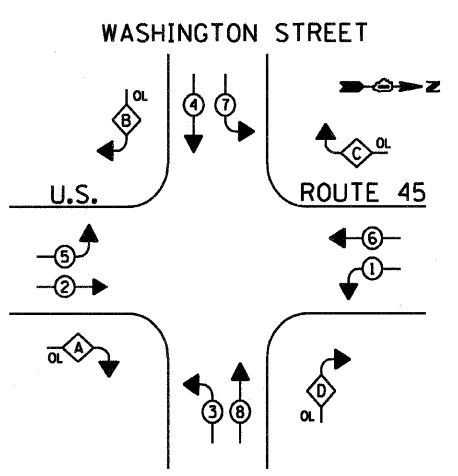
CABLE PLAN LEGEND

- EXISTING** **PROPOSED**
- 8" TRAFFIC SIGNAL SECTION
 - 12" TRAFFIC SIGNAL SECTION
 - 12" PEDESTRIAN SIGNAL SECTION
 - 12" PEDESTRIAN SIGNAL SECTION
 - CONTROLLER CABINET
 - SERVICE INSTALLATION
 - VEHICLE DETECTOR, INDUCTION LOOP
 - P PREFORMED LOOP
 - EMERGENCY VEHICLE LIGHT DETECTOR
 - CONFIRMATION BEACON
 - PUSHBUTTON DETECTOR
 - DENOTES NUMBER OF CONDUCTORS ALL CABLE NO. 14 EXCEPT AS INDICATED ALL LOOP DETECTOR CABLE TO BE SHIELDED
 - SIGNAL FACE WITH BACKPLATE "P" INDICATES PROGRAMMED HEAD
 - NO. 62.5/125, 12MM, 12SM FIBER OPTIC CABLE
 - NO. 14 1/C TRACER CABLE
 - GROUND ROD AT HANDHOLE DOUBLE HOLE, OR CONTROLLER
 - GROUND ROD AT POST OR MAST ARM POLE
 - GROUND ROD AT ELECTRIC SERVICE INSTALLATION
 - GROUND CABLES NO.6 1C GREEN
 - UNINTERRUPTIBLE POWER SUPPLY
 - "R" RELOCATED

EMERGENCY VEHICLE PREEMPTION SEQUENCE



CONTROLLER SEQUENCE



PHASE DESIGNATION DIAGRAM

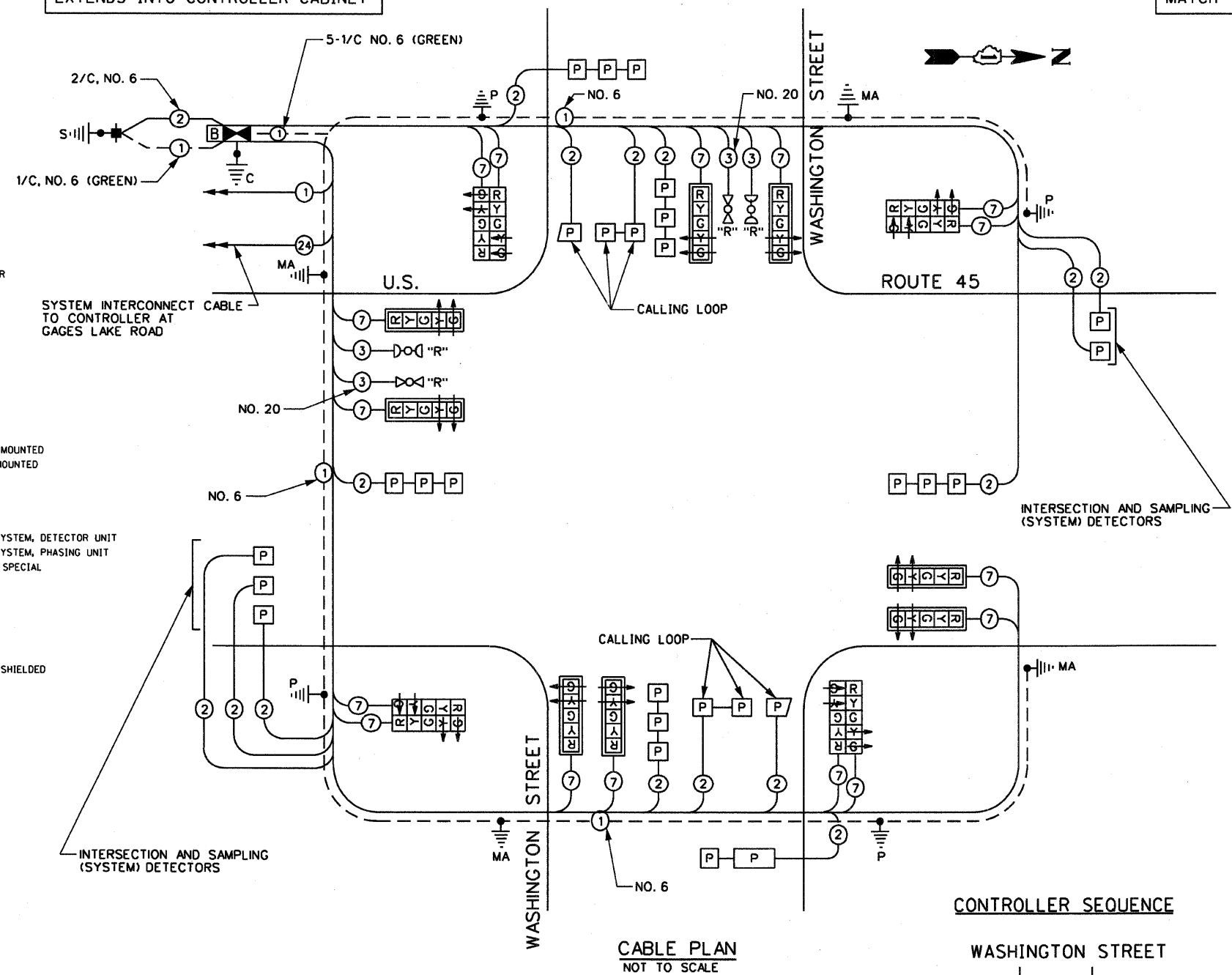
PROPOSED EMERGENCY VEHICLE PREEMPTORS

EMERGENCY VEHICLE PREEMPTOR	3	4		
MOVEMENT	←	↑		

REVISIONS

NAME	DATE

ILLINOIS DEPARTMENT OF TRANSPORTATION
CABLE PLAN
SCHEDULE OF QUANTITIES
PHASE DESIGNATION DIAGRAM
U.S. ROUTE 45 & WASHINGTON STREET
DATE: 12/14/09
DRAWN BY: MB/AJP
CHECKED BY: KMM



LEGEND

- DUAL ENTRY PHASE
- OVERLAP
- NUMBER REFERS TO ASSOCIATED PHASE

I.D.O.T. TRAFFIC SIGNAL INSTALLATION ELECTRICAL SERVICE REQUIREMENTS

TYPE	NO. LAMPS	x WATTAGE		x % OPERATION	TOTAL WATTAGE
		INCAND.	LED		
SIGNAL (RED)	16	135	17	0.50	136
(YELLOW)	16	135	25	0.25	100
(GREEN)	16	135	15	0.25	60
ARROW	32	135	12	0.10	38
PED. SIGNAL	0	90	25	1.00	0
CONTROLLER	1	100	100	1.00	100
ILLUM. SIGN		64		0.05	0
FLASHER	0			0.50	0
TOTAL =					434

ENERGY COSTS TO:
ILLINOIS DEPARTMENT OF TRANSPORTATION
201 W. CENTER COURT
SHALMBURG, IL 60196
CONTACT: MS. LOIS HICKS
PHONE: (847) 816-5489
COMPANY: COMMONWEALTH EDISON COMPANY

FOUNDATION (DEPTH)	FT. (m)	CABLE SLACK	FT. (m)	VERTICAL	FT. (m)
TYPE A-POST	4 (1.2)	HANDHOLE	6.5 (2.0)	ALL FOUNDATIONS	3.5 (1.0)
C-CONTROLLER	4 (1.2)	DOUBLE HANDHOLE	13 (4.0)	MAST ARM (L) POLE	20+L-2=
E-MAST ARM POLE		SIGNAL POST	2 (4.0)		(6m+L-0.6m)=
24" (600 mm)	10 (3.0)	CONTROLLER CAB.	1 (0.5)	BRACKET MOUNTED	13 (4.0)
30" (750 mm)	15 (4.6)	FIBER OPTIC	13 (4.0)	PED. PUSHBUTTON	4 (1.2)
36" (900 mm)	15 (4.6)	ELECTRIC SERVICE	1 (0.5)	ELECTRIC SERVICE	13.5 (4.1)
		GROUND CABLE	1 (0.5)	SERVICE TO GROUND	13.5 (4.1)
				POST MOUNTED	6 (1.8)