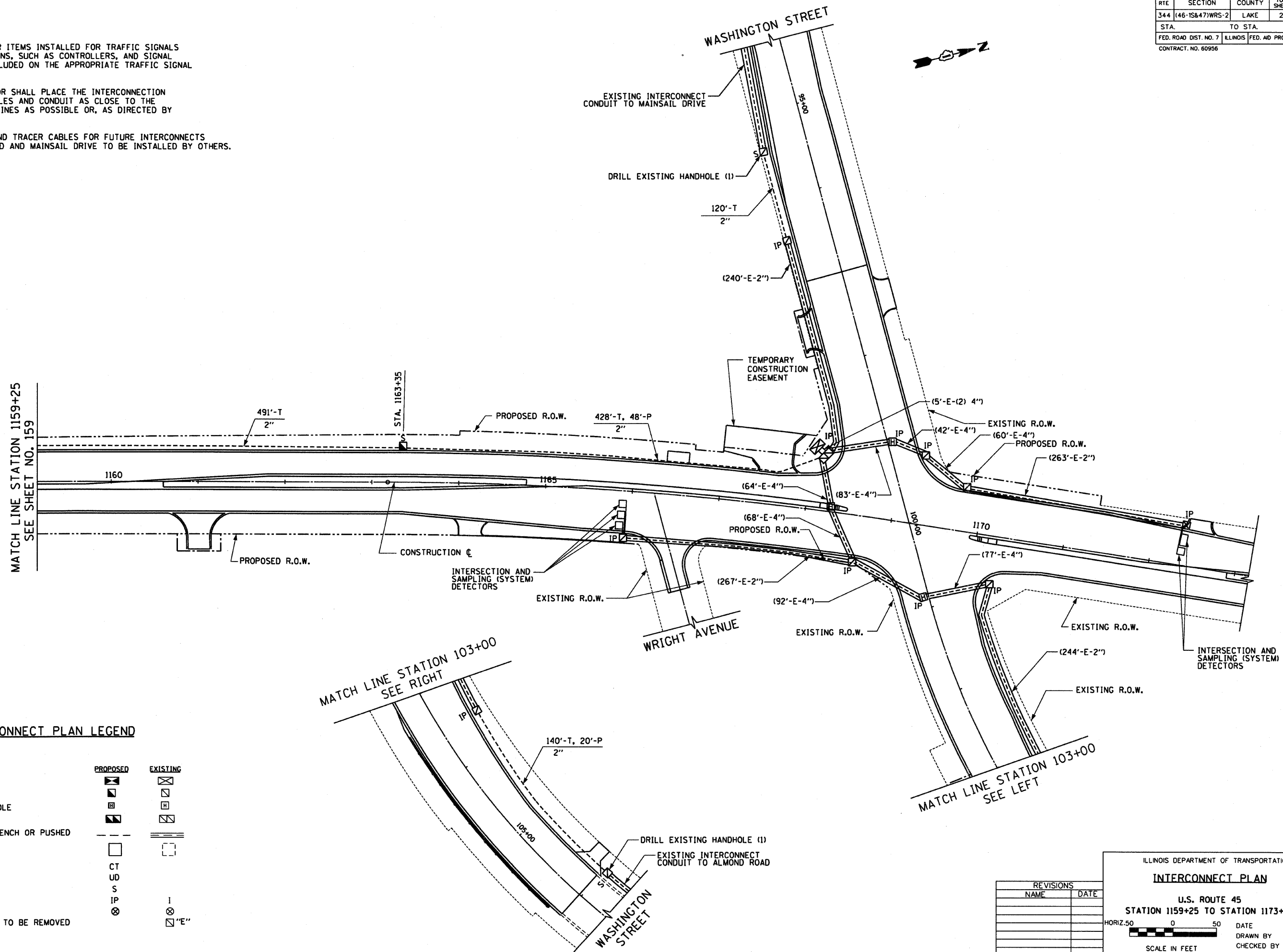


RTE	SECTION	COUNTY	TOTAL SHEETS	SHEET NO
344	(46-1S&47)WRS-2	LAKE	234	160
STA.	TO STA.			
FED. ROAD DIST. NO. 7 ILLINOIS FED. AID PROJECT				
CONTRACT NO. 60956				

NOTES:

1. QUANTITIES FOR ITEMS INSTALLED FOR TRAFFIC SIGNALS AT INTERSECTIONS, SUCH AS CONTROLLERS, AND SIGNAL HEADS, ARE INCLUDED ON THE APPROPRIATE TRAFFIC SIGNAL CABLE PLAN.
2. THE CONTRACTOR SHALL PLACE THE INTERCONNECTION SYSTEM HANDHOLES AND CONDUIT AS CLOSE TO THE RIGHT-OF-WAY LINES AS POSSIBLE OR, AS DIRECTED BY THE ENGINEER.
3. FIBER OPTIC AND TRACER CABLES FOR FUTURE INTERCONNECTS TO ALMOND ROAD AND MAINSAIL DRIVE TO BE INSTALLED BY OTHERS.



INTERCONNECT PLAN LEGEND

	PROPOSED	EXISTING
CONTROLLER		
HANDHOLE		
HEAVY DUTY HANDHOLE		
DOUBLE HANDHOLE		
G.S. CONDUIT IN TRENCH OR PUSHED		
DETECTOR LOOP		
COMMON TRENCH	CT	
UNIT DUCT	UD	
SYSTEM	S	
INTERSECTION	IP	
WOOD POLE		
EXISTING HANDHOLE TO BE REMOVED		

REVISIONS	
NAME	DATE

ILLINOIS DEPARTMENT OF TRANSPORTATION

INTERCONNECT PLAN

U.S. ROUTE 45
STATION 1159+25 TO STATION 1173+20

HORIZ. 50 0 50
SCALE IN FEET

DATE 12/14/09
DRAWN BY MB/AJP
CHECKED BY KMM



12/14/09 - g:\401\2000\0005302\cadd\shah\interconnect3_115.sht