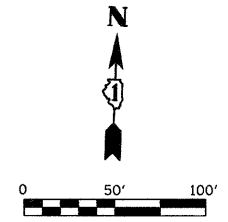
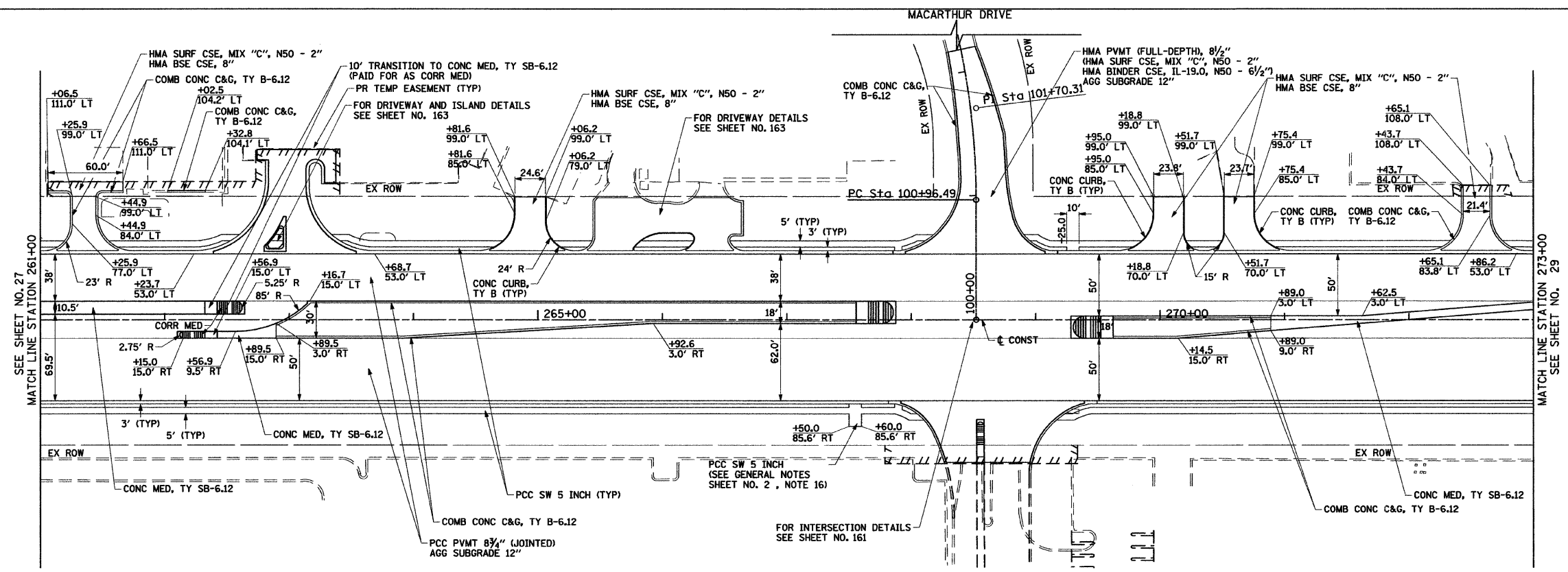


**LEGEND**

	REMOVAL LIMITS (PVMT, DRV, C&G AND MEDIANS)
	TREE REMOVAL
	TREE PRUNING & TREE ROOT PRUNING

**NOTES:**  
 1. ALL SURFACES ARE PCC UNLESS OTHERWISE NOTED.



**MACARTHUR DRIVE CURVE MCI01**

PI STA. = 101+70.31
Δ = 14° 01' 42" (LT)
D = 9° 32' 57"
R = 600.00'
T = 73.82'
L = 146.91'
E = 4.52'
⊙ = NC
P.C. STA. = 100+96.49
P.T. STA. = 102+43.39

**NOTES:**  
 1. ALL ENTRANCES ARE COMMERCIAL ENTRANCES.  
 2. ALL DRIVEWAY RADII ARE 30' UNLESS OTHERWISE NOTED.  
 3. FOR DRIVEWAY DETAILS SEE SHEET NO. 250 AND 251.  
 4. FOR CONCRETE MEDIAN TRANSITION DETAILS SEE SHEET NO. 164.  
 5. FOR RIGHT-OF-WAY INFORMATION SEE PLAT SHEET NO. 145 TO 156.  
 6. ALL SIDEWALK RAMPS MUST BE ADA COMPLIANT (STANDARD 424001)

FILE NAME = g:\ch07\0061\road\1\0160D12-SHT-PLN-06.dgn	USER NAME = BAW\bart	DESIGNED - JMG	REVISED -	<b>STATE OF ILLINOIS DEPARTMENT OF TRANSPORTATION</b>	<b>22nd STREET REMOVAL PLAN AND ROADWAY PLAN</b>	F.A.U. RTE. = 1453	SECTION = 55WRS	COUNTY =	TOTAL SHEETS = 362	SHEET NO. = 28
PLOT SCALE = 5/8"=1'-0"	CHECKED - JRH	DRAWN - BAW	REVISED -			SCALE: 1"=50'	SHEET NO. 28 OF 362 SHEETS	STA. 261+00 TO STA. 273+00	FED. ROAD DIST. NO. 7 (ILLINOIS) FED. AID PROJECT	
PLOT DATE = 3/31/2010	DATE - 4/1/2010	REVISOR -	REVISED -					CONTRACT NO. 60D12		