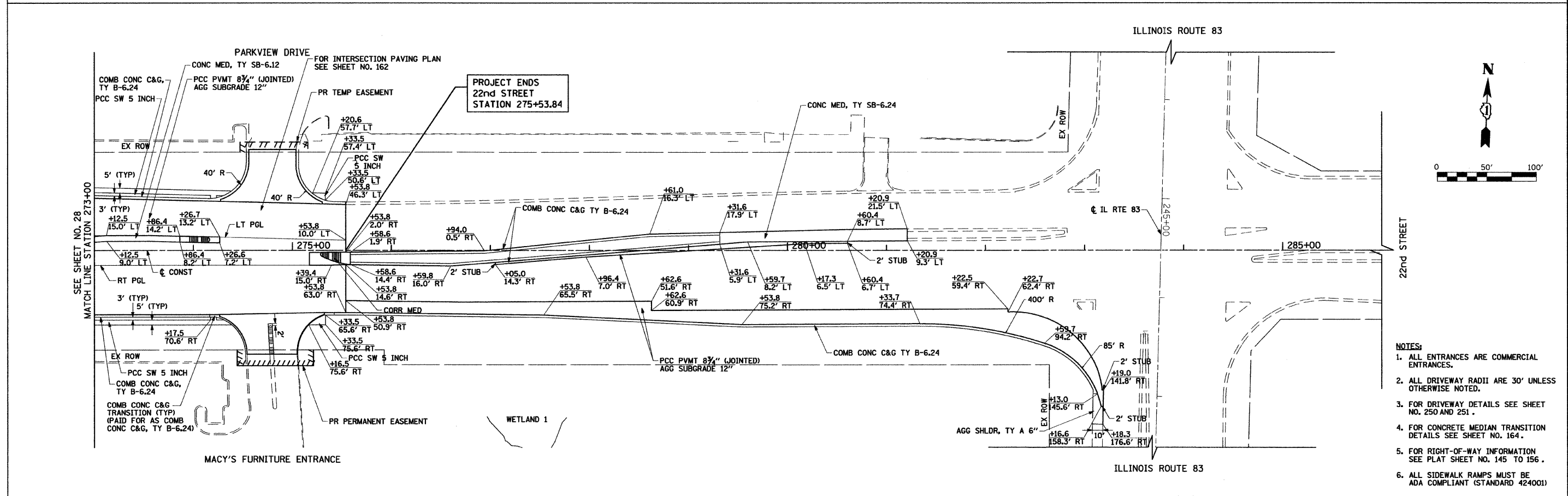


LEGEND

- REMOVAL LIMITS (PVT, DRV, C&G AND MEDIANS)
- TREE REMOVAL
- TREE PRUNING & TREE ROOT PRUNING

NOTES:
 1. ALL SURFACES ARE PCC UNLESS OTHERWISE NOTED.



NOTES:

1. ALL ENTRANCES ARE COMMERCIAL ENTRANCES.
2. ALL DRIVEWAY RADII ARE 30' UNLESS OTHERWISE NOTED.
3. FOR DRIVEWAY DETAILS SEE SHEET NO. 250 AND 251.
4. FOR CONCRETE MEDIAN TRANSITION DETAILS SEE SHEET NO. 164.
5. FOR RIGHT-OF-WAY INFORMATION SEE PLAT SHEET NO. 145 TO 156.
6. ALL SIDEWALK RAMPS MUST BE ADA COMPLIANT (STANDARD 424001)

FILE NAME =	USER NAME = BAN\start	DESIGNED - JMG	REVISED -	STATE OF ILLINOIS DEPARTMENT OF TRANSPORTATION	22nd STREET REMOVAL PLAN AND ROADWAY PLAN	F.A.U. RTE.	SECTION	COUNTY	TOTAL SHEETS	SHEET NO.	
gn\ch07\0061\road\SHETS\0160D12-SHT-PL	AN-07.dgn	DRAWN - JMG	REVISED -			1453	55WRS	DUPAGE	362	29	
PLOT SCALE = 50.0000' / IN.		CHECKED - JRH	REVISED -			CONTRACT NO. 60D12					
PLOT DATE = 3/31/2010		DATE - 4/1/2010	REVISED -			FED. ROAD DIST. NO. 7 [ILLINOIS] FED. AID PROJECT					

SCALE: 1"=50' SHEET NO. 29 OF 362 SHEETS STA. 273+00 TO STA. 286+00