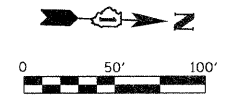
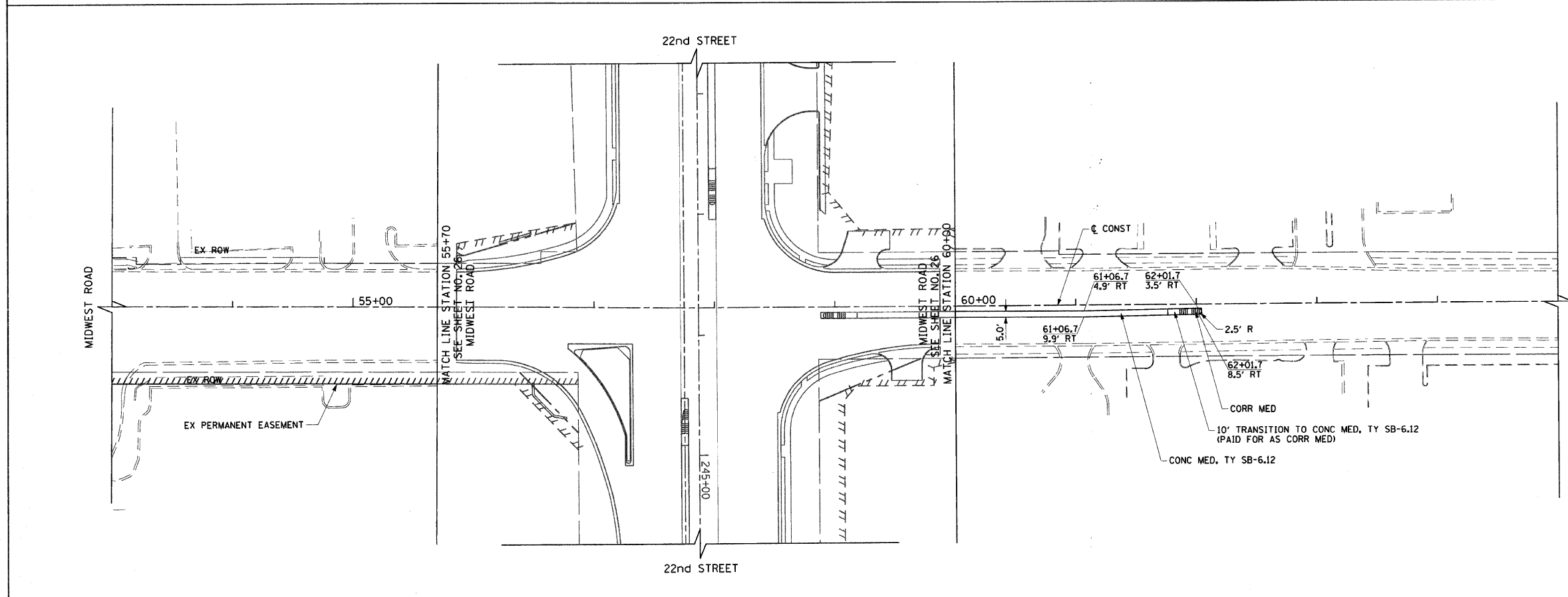


LEGEND

- REMOVAL LIMITS (PVT, DRV, C&G AND MEDIANS)
- X TREE REMOVAL
- ⊕ TREE PRUNING & TREE ROOT PRUNING

NOTES:
 1. ALL SURFACES ARE PCC UNLESS OTHERWISE NOTED.



NOTES:

1. ALL ENTRANCES ARE COMMERCIAL ENTRANCES.
2. ALL DRIVEWAY RADII ARE 30' UNLESS OTHERWISE NOTED.
3. FOR DRIVEWAY DETAILS SEE SHEET NO. 250 AND 251.
4. FOR CONCRETE MEDIAN TRANSITION DETAILS SEE SHEET NO. 164.
5. FOR RIGHT-OF-WAY INFORMATION SEE PLAT SHEET NO. 145 TO 156.
6. ALL SIDEWALK RAMPS MUST BE ADA COMPLIANT (STANDARD 424001)

FILE NAME = g:\ch07\0061\road\SHEETS\DIS\012-SHT-PLN-09.dgn	USER NAME = BAW\jst	DESIGNED - JMG	REVISED -
		DRAWN - BAW	REVISED -
	PLT SCALE = 50.0000' / IN.	CHECKED - JRH	REVISED -
	PLT DATE = 8/5/2009	DATE - 07/24/2009	REVISED -

**STATE OF ILLINOIS
 DEPARTMENT OF TRANSPORTATION**

MIDWEST ROAD REMOVAL PLAN AND ROADWAY PLAN

SCALE: 1"=50' SHEET NO. 31 OF 362 SHEETS STA. 53+00 TO STA. 65+00

F.A.J. RTE.	SECTION	COUNTY	TOTAL SHEETS	SHEET NO.
1453	55WRS	DuPAGE	362	31
FED. ROAD DIST. NO. 7 ILLINOIS FED. AID PROJECT			CONTRACT NO. 60D12	