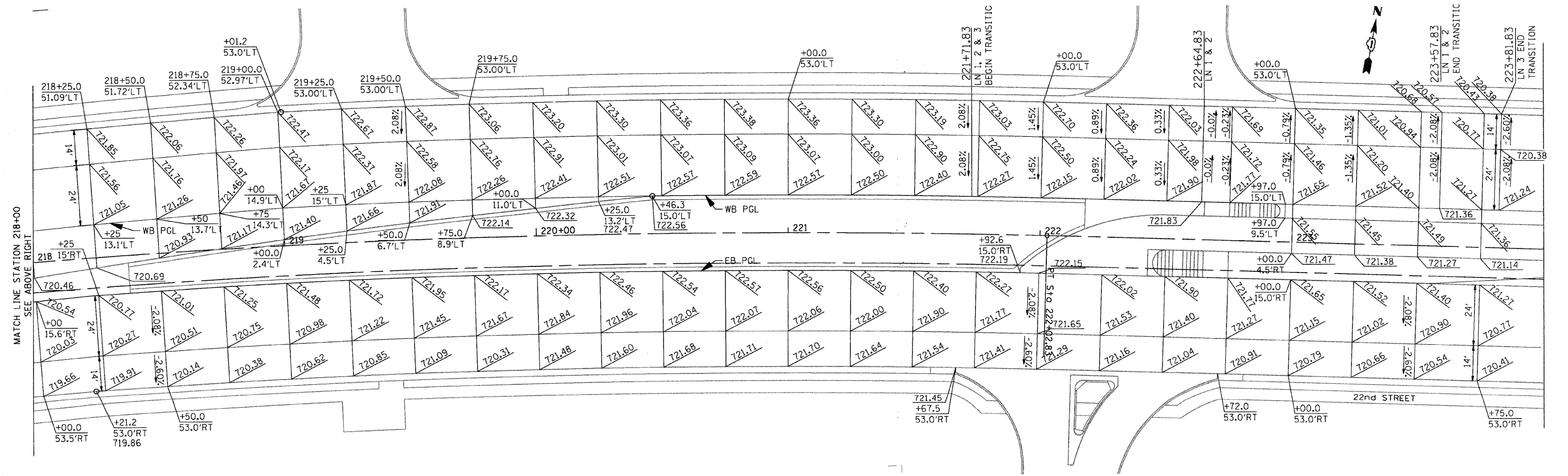
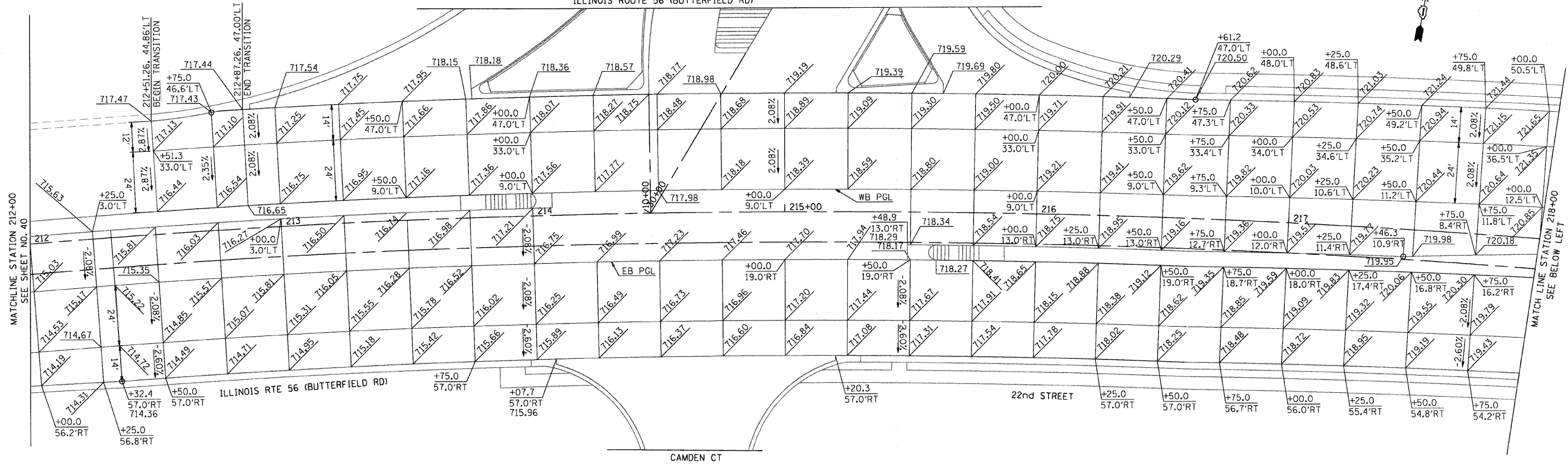


SEE INTERSECTION DETAILS SHEET NO. 157
ILLINOIS ROUTE 56 (BUTTERFIELD RD)



FILE NAME = P:\2007\me87081\22nd.stree\cadd\Shrs\0168012-SHT-SuperE03.dgn
PLOT SCALE = 28.8000 / IN.
USER NAME = Millennium Engineering

M
300 22nd Street, Suite 216, Lombard, IL 60148
630.705.0118 voice, 630.839.3566 fax
www.millenniaeng.com
MILLENNIA ENGINEERING

DESIGNED - TVN	REVISED -
DRAWN - TVN	REVISED -
CHECKED - RPD	REVISED -
DATE - 7/24/2009	REVISED -

**STATE OF ILLINOIS
DEPARTMENT OF TRANSPORTATION**

**22nd STREET
SUPERELEVATION PAVEMENT PLAN**

SCALE: 1"=20' SHEET NO. 41 OF 362 SHEETS STA. 218+00 TO STA. 223+00

F.A.U. RTE.	SECTION	COUNTY	TOTAL SHEETS NO.	SHEET NO.
1453	55WRS	DUPAGE	362	41
FED. ROAD DIST. NO. 7 ILLINOIS FED. AID PROJECT				CONTRACT NO. 60D12

SE-03

P:\2007\me87081\22nd.stree\cadd\Shrs\0168012-SHT-SuperE03.dgn