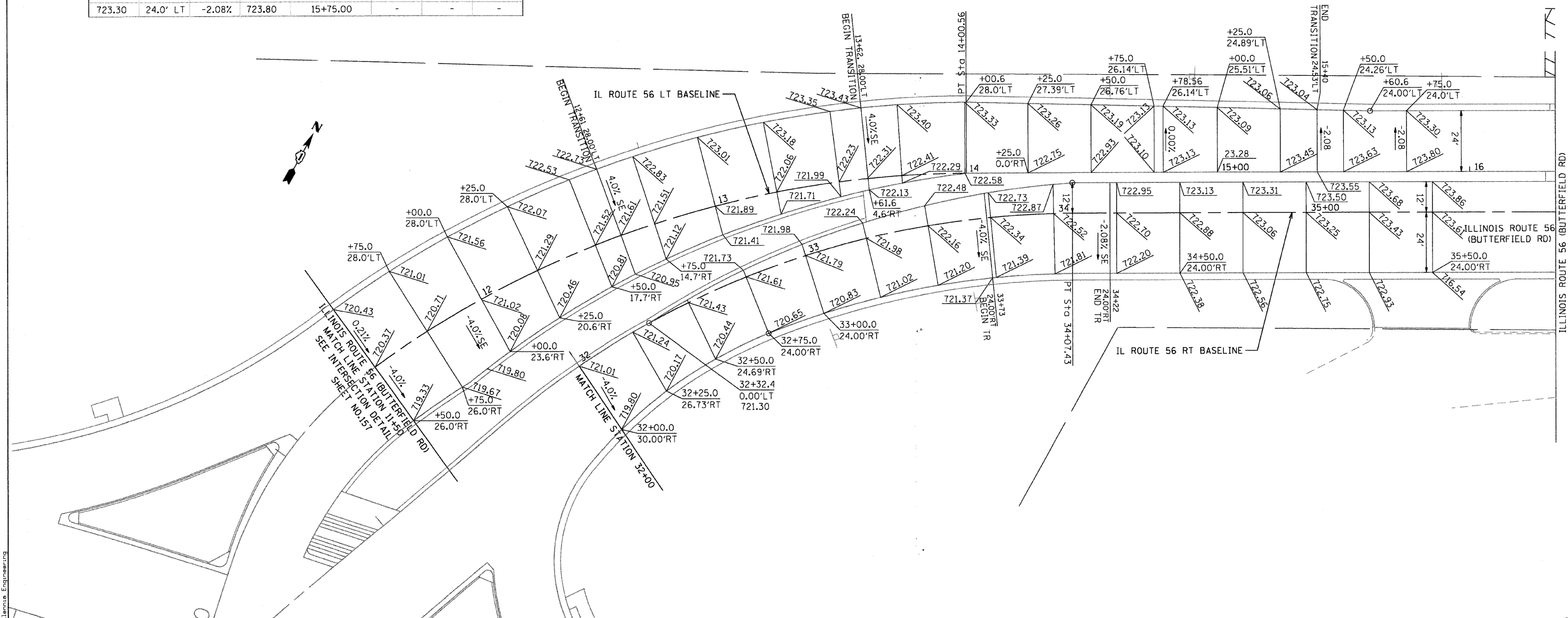


ILLINOIS ROUTE 56 LEFT BASELINE (SOUTHWEST BOUND)							
LEFT EOP ELEV	LEFT EOP OFFSET	SLOPE %	LT PGL ELEV	STATION	SLOPE LT TURN %	MEDIAN OFFSET	MEDIAN LEFT TURN EOP
720.43	28.0' LT	0.21%	720.37	11+50.00	4.00%	26.0' RT	719.33
721.01	28.0' LT	1.06%	720.71	11+75.00	4.00%	26.0' RT	719.67
721.56	28.0' LT	1.92%	721.02	12+00.00	4.00%	23.6' RT	720.08
722.07	28.0' LT	2.77%	721.29	12+25.00	4.00%	20.6' RT	720.47
722.53	28.0' LT	3.63%	721.52	12+50.00	4.00%	17.7' RT	720.81
722.73	28.0' LT	4.00%	721.61	12+61.00	4.00%	16.5' RT	720.95
722.83	28.0' LT	4.00%	721.71	12+75.00	4.00%	14.7' RT	721.12
723.01	28.0' LT	4.00%	721.89	13+00.00	4.00%	11.8' RT	721.42
723.18	28.0' LT	4.00%	722.06	13+25.00	4.00%	8.9' RT	721.71
723.35	28.0' LT	4.00%	722.23	13+50.00	4.00%	5.9' RT	721.99
723.43	28.0' LT	4.00%	722.31	13+62.00	4.00%	4.6' RT	722.13
723.40	28.0' LT	3.56%	722.41	13+75.00	4.00%	3.0' RT	722.29
723.33	28.0' LT	2.70%	722.58	14+00.00	4.00%	0.0' RT	722.58
723.26	27.4' LT	1.85%	722.75	14+25.00	-	-	-
723.19	26.8' LT	0.99%	722.93	14+50.00	-	-	-
723.13	26.1' LT	0.14%	723.10	14+75.00	-	-	-
723.13	26.1' RT	0.00%	723.13	14+78.65	-	-	-
723.09	25.5' LT	-0.71%	723.28	15+00.00	-	-	-
723.06	24.9' LT	-1.57%	723.45	15+25.00	-	-	-
723.04	24.5' LT	-2.08%	723.55	15+40.00	-	-	-
723.13	24.3' LT	-2.08%	723.62	15+50.00	-	-	-
723.19	24.0' LT	-2.08%	723.69	15+60.60	-	-	-
723.30	24.0' LT	-2.08%	723.80	15+75.00	-	-	-

ILLINOIS ROUTE 56 RIGHT BASELINE (NORTHEAST BOUND)							
MEDIAN LEFT TURN EOP	MEDIAN OFFSET	SLOPE %	STATION	RT PGL ELEV	SLOPE RT TURN %	RIGHT EOP OFFSET	RIGHT EOP ELEV
-	-	-	32+00.00	721.01	-4.00%	30.0' RT	719.81
-	-	-	32+25.00	721.24	-4.00%	26.7' RT	720.17
721.30	0.0' RT	4.00%	32+32.40	721.30	-4.00%	26.0' RT	720.26
721.48	1.2' LT	4.00%	32+50.00	721.43	-4.00%	24.7' RT	720.44
721.73	2.9' LT	4.00%	32+75.00	721.61	-4.00%	24.0' RT	720.65
721.98	4.6' LT	4.00%	33+00.00	721.79	-4.00%	24.0' RT	720.83
722.24	6.5' LT	4.00%	33+25.00	721.98	-4.00%	24.0' RT	721.02
722.48	8.1' LT	4.00%	33+50.00	722.16	-4.00%	24.0' RT	721.20
722.72	9.7' LT	4.00%	33+73.00	722.33	-4.00%	24.0' RT	721.37
722.73	9.8' LT	3.94%	33+75.00	722.34	-3.94%	24.0' RT	721.39
722.87	11.9' LT	2.96%	34+00.00	722.52	-2.96%	24.0' RT	721.81
722.89	12.0' LT	2.66%	34+07.43	722.57	-2.66%	24.0' RT	721.93
722.93	12.0' LT	2.08%	34+22.00	722.68	-2.08%	24.0' RT	722.18
722.95	12.0' LT	2.08%	34+25.00	722.70	-2.08%	24.0' RT	722.20
723.13	12.0' LT	2.08%	34+50.00	722.88	-2.08%	24.0' RT	722.38
723.31	12.0' LT	2.08%	34+75.00	723.06	-2.08%	24.0' RT	722.56
723.50	12.0' LT	2.08%	35+00.00	723.25	-2.08%	24.0' RT	722.75
723.68	12.0' LT	2.08%	35+25.00	723.43	-2.08%	24.0' RT	722.93
723.86	12.0' LT	2.08%	35+50.00	723.61	-2.08%	24.0' RT	723.11
724.04	12.0' LT	2.08%	35+75.00	723.79	-2.08%	24.0' RT	723.29



FILE NAME: I:\2009\11\17\7281\_22nd\_street\road\56\116012-SHT-SuperE04.dgn  
 PLOT SCALE: 28/2000 1/16"  
 USER NAME: Millennium Engineering



200 22ND Street, Suite 216, Lombard, IL 60148  
 630.765.8119 voice, 630.839.2566 fax  
 www.millenniaeng.com  
**MILLENNIA ENGINEERING**

DESIGNED	- TVN	REVISED	-
DRAWN	- TVN	REVISED	-
CHECKED	- RPD	REVISED	-
DATE	- 7/24/2009	REVISED	-

**STATE OF ILLINOIS  
 DEPARTMENT OF TRANSPORTATION**

**ILLINOIS ROUTE 56 (BUTTERFIELD RD)  
 SUPERELEVATION PAVEMENT PLAN**

SCALE: 1"=20' SHEET NO. 42 OF 362 SHEETS STA. 11+50 TO STA. 16+33

F.A.U. RTE.	SECTION	COUNTY	TOTAL SHEETS	SHEET NO.
1453	55WRS	DUPAGE	362	42
FED. ROAD DIST. NO. 7 ILLINOIS FED. AID PROJECT			CONTRACT NO. 60D12	

SE-04

I:\2009\11\17\7281\_22nd\_street\road\56\116012-SHT-SuperE04.dgn