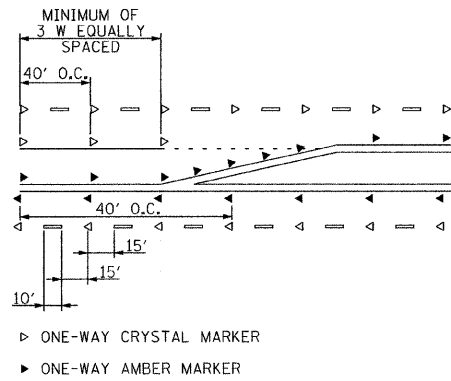


TEMPORARY RAISED REFLECTIVE PAVEMENT MARKERS



PRE-STAGE 1

1. MAINTAIN TWO-WAY TRAFFIC FLOW ON 22nd STREET.
2. THE FOLLOWING SHALL BE COMPLETED USING STANDARD 701421-02 FOR DAYTIME LANE CLOSURES. A MINIMUM OF ONE LANE SHALL BE MAINTAINED IN EACH DIRECTION.
 - a. REMOVE EXISTING MEDIAN AND REPLACE WITH TEMPORARY PAVEMENT ALONG 22nd STREET FROM STA 210+56 TO 281+21, ALONG ILLINOIS ROUTE 56 FROM STA 10+47 TO 14+47, AND ALONG MIDWEST ROAD FROM STA 58+65 TO 62+04. SEE SHEET NO. 50 FOR GUIDANCE ON TEMPORARY PAVEMENT CROSS SLOPES.
 - b. REMOVE EXISTING CORNER ISLANDS AND REPLACE WITH TEMPORARY PAVEMENT AT THE 22nd STREET INTERSECTIONS OF ILLINOIS ROUTE 56 AND MIDWEST ROAD.
 - c. REMOVE EXISTING CURB AND CUTTER ALONG THE SOUTH SIDE OF 22nd STREET FROM STA 207+26 TO 232+90 AND FROM STA 236+88 TO 259+20. CONSTRUCT TEMPORARY PAVEMENT ALONG THE SOUTH EDGE OF PAVEMENT AS SHOWN ON THE STAGE 1 TYPICAL SECTION AND STAGING PLANS (SEE SHEETS NO. 51 TO 55).

PRE-STAGE 1 (CONTINUED)

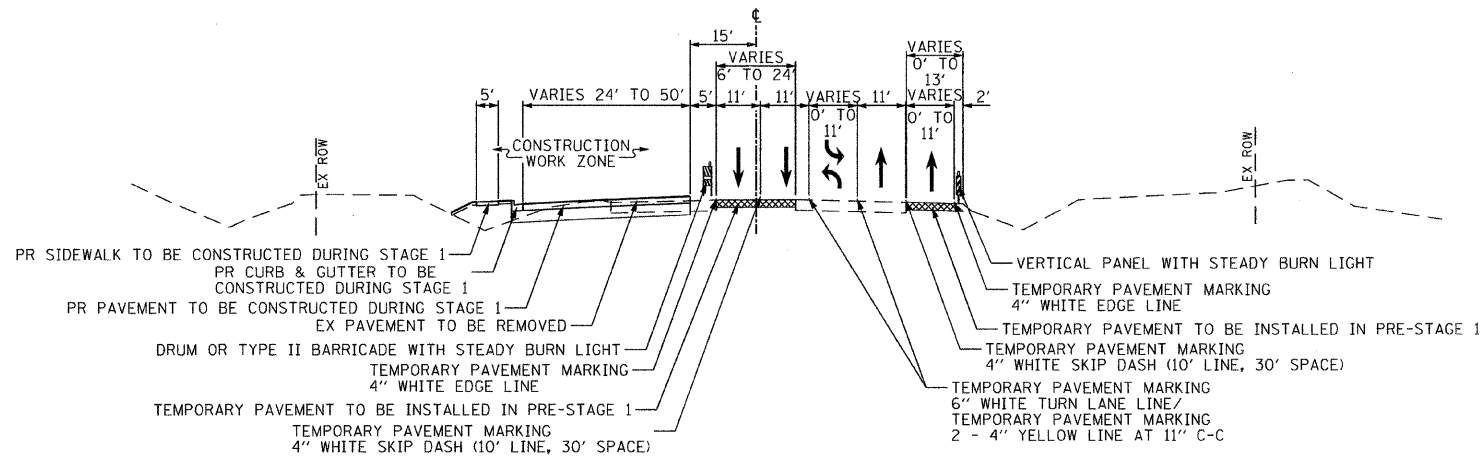
3. INSTALL TEMPORARY TRAFFIC SIGNALS.
4. CONSTRUCT THE MAINLINE STORM SEWER ALONG THE SOUTH SIDE OF THE ROADWAY BETWEEN STA 237+68 AND 243+41 AND IN THE MEDIAN FROM STA 273+85 TO STA 274+77. CONSTRUCT THE ENTIRE LATERAL AT STA 243+41 AND FROM THE MEDIAN TO 15' SOUTH OF THE CENTERLINE AT STA 274+77. CONSULT THE DRAINAGE PLANS (SEE SHEETS NO. 92 AND 95). A QUANTITY OF CLASS D PATCHES HAS BEEN PROVIDED FOR PATCHING TRENCHES ACROSS THE EXISTING PAVEMENT.

STAGE 1

1. USE STAGE 1 STAGING PLAN SHEETS (SEE SHEETS NO. 51 TO 55).
2. ESTABLISH TWO-WAY TRAFFIC FLOW ALONG THE SOUTH SIDE OF 22nd STREET. MAINTAIN A MINIMUM OF TWO 11' THRU LANES IN EACH DIRECTION THROUGHOUT THE ENTIRE PROJECT LENGTH. UTILIZE THE TEMPORARY PAVEMENT LANE ALONG THE SOUTH EDGE OF PAVEMENT FOR THE RIGHT EASTBOUND THRU LANE. AN 11' LEFT TURN LANE SHALL BE PROVIDED AT ALL LOCATIONS SHOWN ON THE STAGE 1 STAGING PLAN SHEETS. A THIRD EASTBOUND THRU LANE SHALL BE MAINTAINED FROM STA 244+54 TO STA 255+00 (SEE SHEETS NO. 53 AND 54).
3. REMOVE EXISTING PAVEMENT AND CURB AND GUTTER ALONG THE NORTH SIDE OF 22nd STREET FROM STA 212+51 TO 275+54.
4. REMOVE THE PORTION OF LATERAL STORM SEWER AND CULVERTS WITHIN THE STAGE 1 CONSTRUCTION WORK ZONE AND THE EXISTING LONGITUDINAL STORM SEWER SYSTEM ALONG THE NORTH SIDE OF 22nd STREET AS SHOWN ON THE DRAINAGE PLANS (SEE SHEETS NO. 89 TO 97).
5. WITHIN THE STAGE 1 CONSTRUCTION WORK ZONE, CONSTRUCT ALL OF THE MAINLINE STORM SEWER AND THE LATERALS BETWEEN STA 224+50 AND STA 275+14. THE ENTIRE LATERAL SHALL BE CONSTRUCTED AT STA 238+30 AND STA 269+52. ALL STORM SEWER FOR MACARTHUR DRIVE SHALL BE CONSTRUCTED DURING STAGE 1. CONSULT THE DRAINAGE PLANS (SEE SHEETS NO. 89 TO 97) AND EROSION AND SEDIMENT CONTROL PLANS STAGE 1 (SEE SHEETS NO. 79 TO 84). A QUANTITY OF CLASS D PATCHES HAS BEEN PROVIDED FOR PATCHING TRENCHES OUTSIDE OF THE STAGE 1 CONSTRUCTION WORK ZONE.
6. CONSTRUCT THE WESTBOUND THRU LANES, RIGHT TURN LANES, OUTSIDE CURB AND GUTTER AND SIDEWALK ALONG THE NORTH SIDE OF 22nd STREET.
7. USE THE INTERSECTION STAGING PLANS (SEE SHEETS NO. 75 TO 78) AND THE ILLINOIS ROUTE 56 AND MIDWEST ROAD STAGING PLAN SHEETS FOR STAGES A, B AND C (SEE SHEETS NO. 68 TO 74) TO CONSTRUCT THE NORTH PORTIONS OF THESE INTERSECTIONS.
8. CONSTRUCT ALL DRIVEWAYS ALONG THE NORTH SIDE OF 22nd STREET. DRIVEWAYS ARE TO REMAIN OPEN THROUGHOUT CONSTRUCTION UNLESS OTHERWISE SHOWN ON THE PLANS. PCC DRIVEWAYS SHALL BE CONSTRUCTED ONE LANE AT A TIME WHILE PROVIDING TWO LANES FOR TRAFFIC. HMA DRIVEWAYS SHALL BE CONSTRUCTED ONE HALF AT A TIME WHILE UTILIZING TEMPORARY ACCESS FOR TRAFFIC.
9. INSTALL PERMANENT LIGHTING ALONG THE NORTH SIDE OF 22nd STREET (SEE SHEETS NO. 229 TO 231).
10. CONSTRUCT THE WATER MAIN AND SERVICES WITHIN THE STAGE 1 CONSTRUCTION WORK ZONE.
11. COMPLETE LANDSCAPING ALONG THE NORTH SIDE OF 22nd STREET.

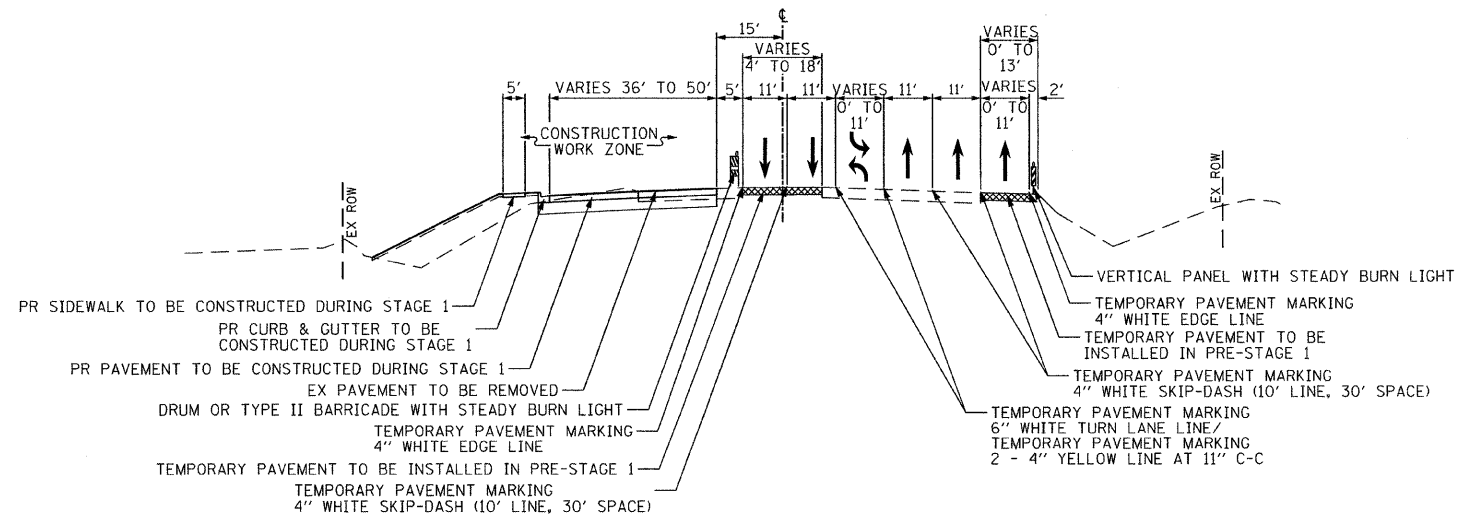
GENERAL NOTES (CONTINUED)

5. THE ENGINEER SHALL INFORM SCOTT KAPTON OF THE TOLLWAY AT (630) 241-6800 EXT. 3911 48 HOURS IN ADVANCE OF ANY CHANGE IN CONSTRUCTION STAGING ON MIDWEST ROAD.
6. TEMPORARY LANE CLOSURES FOR ANY REASON SHALL BE RESTRICTED TO THE WEEKDAY HOURS OF 9:00 AM TO 3:30 PM, AS APPROVED IN ADVANCE BY THE ENGINEER.
7. DRUMS OR TYPE II BARRICADES AND VERTICAL PANELS SHALL BE EQUIPPED WITH MONODIRECTIONAL STEADY BURN LIGHTS AND SHALL BE PLACED AT 50' INTERVALS ALONG THE PROPOSED CONSTRUCTION WORK ZONE, AT 25' INTERVALS IN CURVES, AND AT 20' INTERVALS IN TAPER SECTIONS AS INDICATED ON THE PLANS OR AS DIRECTED BY THE ENGINEER. TYPE II BARRICADES SHALL HAVE A MINIMUM REFLECTORIZED AREA OF 288 SQUARE INCHES. TYPE II BARRICADES, 2' IN WIDTH SHALL BE USED IN ALL STAGES OF CONSTRUCTION.
8. ALL DRIVEWAYS SHALL BE OPEN FOR TRAFFIC DURING CONSTRUCTION UNLESS OTHERWISE SHOWN ON THE PLANS.
9. WET REFLECTIVE TEMPORARY TAPE TYPE III PAVEMENT MARKINGS SHALL BE USED ON ALL FINAL PAVEMENT WEARING SURFACES. TEMPORARY PAVEMENT MARKING PAINT SHALL BE USED ELSEWHERE.
10. THE CONTRACTOR SHALL BE REQUIRED TO REMOVE ALL EXISTING PAVEMENT MARKINGS WHICH CONFLICT WITH THE DESIGNATED TRAFFIC CONTROL PLAN. THIS WORK SHALL BE PAID FOR AS PAVEMENT MARKING REMOVAL.
11. ALL TEMPORARY PAVEMENT MARKINGS SHOWING DETERIORATION AFTER 7 DAYS SHALL BE REPLACED BY THE CONTRACTOR AS DIRECTED BY THE ENGINEER. SUFFICIENT QUANTITIES FOR 1 PLACEMENT AND 3 REPLACEMENTS HAVE BEEN PROVIDED FOR EACH STAGE. ALL MARKINGS THAT REQUIRE REPLACEMENT PRIOR TO 7 DAYS OF SERVICE OR REPLACEMENT AFTER THE THIRD REPLACEMENT SHALL BE REPLACED BY THE CONTRACTOR AT HIS OWN EXPENSE.
12. TEMPORARY PAVEMENT SHALL ADHERE TO THE TEMPORARY PAVEMENT SPECIAL PROVISION. TEMPORARY PAVEMENT SHALL CONSIST OF 8 INCHES OF PCC PAVEMENT OR 1 1/2 INCHES OF HMA SURFACE COURSE AND 8 1/2 INCHES OF HMA BINDER COURSE.
13. THE FURNISHING, INSTALLING, AND RELOCATION OF ALL TRAFFIC SIGNS SHALL BE IN ACCORDANCE WITH THE MANUAL ON UNIFORM TRAFFIC CONTROL DEVICES AND THE STANDARD SPECIFICATIONS. THIS WORK SHALL BE INCLUDED IN THE COST FOR TRAFFIC CONTROL AND PROTECTION. ALL CONFLICTING TRAFFIC SIGNS SHALL BE COVERED AS DIRECTED BY THE ENGINEER. THIS WORK SHALL BE INCLUDED IN THE COST OF TRAFFIC CONTROL AND PROTECTION, (SPECIAL).
14. THE CONTRACTOR SHALL BE RESPONSIBLE FOR ENSURING DRAINAGE OF THE ROADWAY DURING ALL STAGES OF CONSTRUCTION. A QUANTITY OF 9 INLETS, TYPE A, TYPE B GRATE AND 450' OF STORM SEWERS, CLASS A, TYPE 1 12" HAS BEEN PROVIDED FOR TEMPORARY USE. REMOVAL OF THESE ITEMS SHALL BE INCLUDED IN THEIR COST.
15. THE CONTRACTOR SHALL MAINTAIN EXISTING AND/OR PROPOSED ROADWAY LIGHTING DURING THE DURATION OF THE PROJECT.
16. DURING CONSTRUCTION, THE CONTRACTOR SHALL PROVIDE A SAFE WAITING AREA AND ACCESS TO BUS LANDING AREA FOR PEDESTRIANS DURING CONSTRUCTION. THE COST OF THIS WORK WILL NOT BE PAID FOR SEPARATELY, BUT SHALL BE INCLUDED IN THE CONTRACT UNIT PRICE FOR "PCC SIDEWALK, 5 INCH".
17. ALL CONSTRUCTION SIGNS, BARRICADES, AND OTHER DEVICES REQUIRED TO CONTROL TRAFFIC SHALL BE FURNISHED, INSTALLED, AND MAINTAINED BY THE CONTRACTOR.
18. ALL TRAFFIC CONTROL DEVICES SHALL BE REMOVED, COVERED OR TURNED AWAY FROM THE TRAFFIC IMMEDIATELY WHEN THEY ARE NO LONGER NECESSARY. WHEN A SIGN IS COVERED, ITS POST SHALL HAVE A REFLECTIVE 3 INCH X 6 INCH DELINEATOR INSTALLED.
19. FOR PROPERTIES THAT MAINTAIN TWO DRIVEWAYS IN THEIR EXISTING CONDITION, THE CONTRACTOR SHALL PROVIDE ACCESS TO THE PROPERTY THRU ONE DRIVEWAY WHILE THE SECOND DRIVEWAY IS BEING CONSTRUCTED.
20. THE CONTRACTOR SHALL REPLACE ANY TEMPORARY RAISED REFLECTIVE PAVEMENT MARKER THAT IS DAMAGED OR AS DIRECTED BY THE ENGINEER. THIS WORK SHALL BE INCIDENTAL TO THE ORIGINAL TEMPORARY RAISED REFLECTIVE PAVEMENT MARKER.



MAINTENANCE OF TRAFFIC TYPICAL SECTION - STAGE 1

22nd STREET
STATION 207+24.70 TO STATION 244+00.00



MAINTENANCE OF TRAFFIC TYPICAL SECTION - STAGE 1

22nd STREET
STATION 244+00.00 TO STATION 275+53.84

GENERAL NOTES

1. THE CONTRACTOR SHALL MAINTAIN A MINIMUM OF TWO 11' THRU LANES IN EACH DIRECTION FOR TWO-WAY TRAFFIC FLOW UNLESS OTHERWISE SPECIFIED. A MINIMUM OF 3' SHALL BE MAINTAINED AT ALL TIMES BETWEEN TRAFFIC AND CONSTRUCTION UNLESS OTHERWISE NOTED IN THE PLANS.
2. THE CONTRACTOR SHALL MAINTAIN TRAFFIC IN ACCORDANCE WITH THE SPECIAL PROVISIONS, STATE STANDARDS, STANDARD SPECIFICATIONS AND AS DIRECTED BY THE ENGINEER.
3. THE ENGINEER SHALL BE INFORMED 48 HOURS IN ADVANCE OF ANY CHANGE IN CONSTRUCTION STAGING.
4. THE ENGINEER SHALL CONTACT THE ILLINOIS DEPARTMENT OF TRANSPORTATION TRAFFIC CONTROL SUPERVISOR AT (847) 705-4470 A MINIMUM OF 72 HOURS PRIOR TO THE PLACEMENT OF ANY TEMPORARY TRAFFIC CONTROL DEVICES.

NOTE:

BOXED ITEMS ARE INCLUDED IN THE COST OF THE CONTRACT.

FILE NAME =	USER NAME = jrgolemba	DESIGNED - TKH	REVISED -
g:\CH07\0061\Road\Sheets\0160012-SHT-STAGING-TYPICAL.dgn		DRAWN - TKH	REVISED -
PLOT SCALE = 50.0000' / IN.		CHECKED - JRH	REVISED -
PLOT DATE = 12/7/2009		DATE - 07/24/2009	REVISED -

STATE OF ILLINOIS
DEPARTMENT OF TRANSPORTATION

SUGGESTED CONSTRUCTION PROCEDURES AND MAINTENANCE OF TRAFFIC
TYPICAL SECTIONS AND NOTES - 22nd STREET

SCALE: NOT TO SCALE SHEET NO. 43 OF 362 SHEETS

F.A. RTE.	SECTION	COUNTY	TOTAL SHEETS	SHEET NO.
1453	55WR5	DuPAGE	362	43
CONTRACT NO. 60D12				
FED. ROAD DIST. NO. 7 ILLINOIS FED. AID PROJECT				