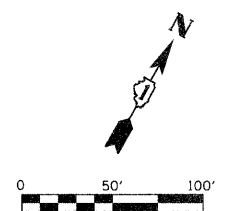
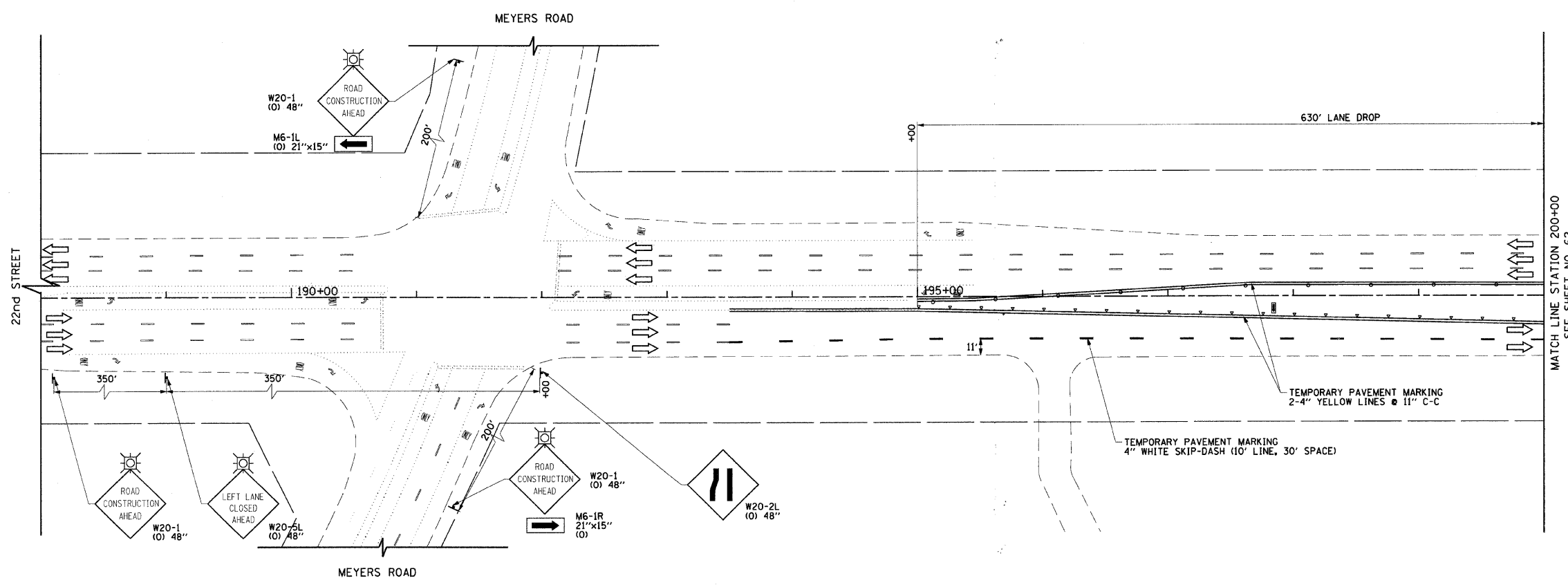


LEGEND	
	CONSTRUCTION WORK ZONE
	TEMPORARY PAVEMENT TO BE CONSTRUCTED PRIOR TO STAGE 1
	TEMPORARY PAVEMENT TO BE CONSTRUCTED PRIOR TO STAGE 2
	ARROW BOARD
	SIGN TO BE PLACED ON PERMANENT OR PORTABLE SUPPORT
	MONODIRECTIONAL FLASHING LIGHT
	DRUMS OR TYPE II BARRICADE WITH STEADY BURN LIGHT @ 50' C-C (TYP), 25' C-C IN CURVES AND RADII, AND 20' C-C IN TAPERS
	TYPE III BARRICADE
	VERTICAL PANELS WITH STEADY BURN LIGHT @ 50' C-C (TYP), 25' C-C IN CURVES AND RADII, AND 20' C-C IN TAPERS
	DIRECTION INDICATOR BARRICADES WITH STEADY BURN LIGHTS @ 20' C-C
	DIRECTION OF TRAFFIC FLOW
	DRIVEWAY ENTRANCE 30" X 30" SEE TC-26
	DRIVEWAY ENTRANCE 30" X 30" SEE TC-26
	R3-2 24" X 24"



FILE NAME =	USER NAME = BAW:torr	DESIGNED - TKH	REVISED -
g:\ch07\0061\road\sheets\DI160012-SHT-514	GING-P3-1.dgn	DRAWN - BAW	REVISED -
	PLOT SCALE = 50.0000' / IN.	CHECKED - JRH	REVISED -
	PLOT DATE = 8/5/2009	DATE - 07/24/2009	REVISED -

**STATE OF ILLINOIS
DEPARTMENT OF TRANSPORTATION**

**SUGGESTED CONSTRUCTION PROCEDURES AND
MAINTENANCE OF TRAFFIC - 22nd STREET STAGE 3**

SCALE: 1"=50' SHEET NO. 61 OF 362 SHEETS STA. 188+00 TO STA. 200+00

F.A.U. RTE.	SECTION	COUNTY	TOTAL SHEETS	SHEET NO.
1453	55WRS	DuPAGE	362	61
CONTRACT NO. 60D12				
FED. ROAD DIST. NO. 7 ILLINOIS FED. AID PROJECT				