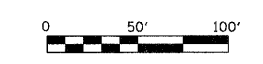
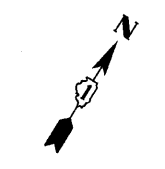
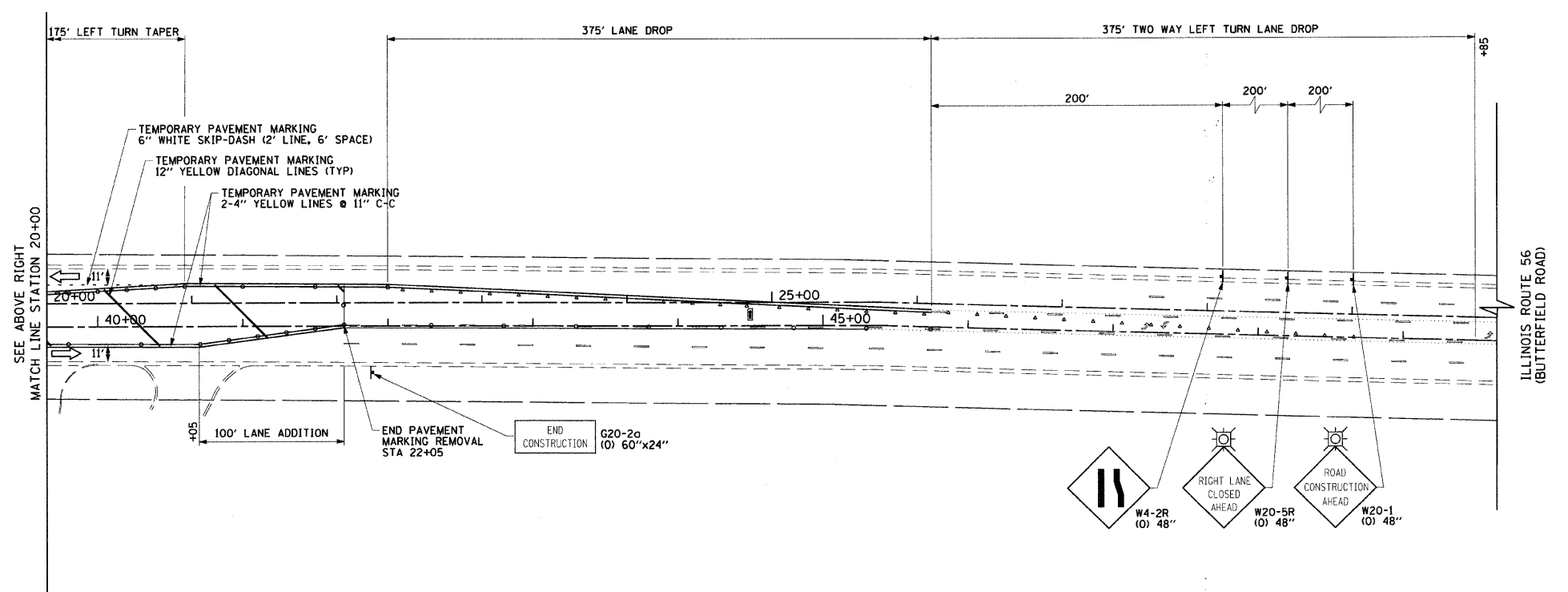


NOTE:
STATIONS ARE GIVEN WITH RESPECT TO THE LEFT BASELINE



LEGEND	
	CONSTRUCTION WORK ZONE
	TEMPORARY PAVEMENT TO BE CONSTRUCTED PRIOR TO STAGE 1
	TEMPORARY PAVEMENT TO BE CONSTRUCTED PRIOR TO STAGE 2
	ARROW BOARD
	SIGN TO BE PLACED ON PERMANENT OR PORTABLE SUPPORT
	MONODIRECTIONAL FLASHING LIGHT
	DRUMS OR TYPE II BARRICADE WITH STEADY BURN LIGHT @ 50' C-C (TYP), 25' C-C IN CURVES AND RADII, AND 20' C-C IN TAPERS
	TYPE III BARRICADE
	VERTICAL PANELS WITH STEADY BURN LIGHT @ 50' C-C (TYP), 25' C-C IN CURVES AND RADII, AND 20' C-C IN TAPERS
	DIRECTION INDICATOR BARRICADES WITH STEADY BURN LIGHTS @ 20' C-C
	DIRECTION OF TRAFFIC FLOW
	1 DRIVEWAY ENTRANCE 30" x 30" SEE TC-26
	2 DRIVEWAY ENTRANCE 30" x 30" SEE TC-26
	3 R3-2 24" x 24"

FILE NAME = g:\ch07\0061\road\sheet\012-SHT-ST	USER NAME = BAW\art	DESIGNED - TKH	REVISED -
	GING-BUTTERFIELD-1-C.dgn	DRAWN - BAW	REVISED -
	PLOT SCALE = 50.0000' / IN.	CHECKED - JRH	REVISED -
	PLOT DATE = 8/5/2009	DATE - 07/24/2009	REVISED -

**STATE OF ILLINOIS
DEPARTMENT OF TRANSPORTATION**

**SUGGESTED CONSTRUCTION PROCEDURES AND
MAINTENANCE OF TRAFFIC - ILLINOIS ROUTE 56 (BUTTERFIELD ROAD)
STAGE 1C**

SCALE: 1"=50' SHEET NO. 70 OF 362 SHEETS STA. 12+00 TO STA. 25+50

F.A.U. RTE. 1453	SECTION 55WRS	COUNTY DuPAGE	TOTAL SHEETS 362	SHEET NO. 70
FED. ROAD DIST. NO. 7 [ILLINOIS] FED. AID PROJECT				CONTRACT NO. 60D12