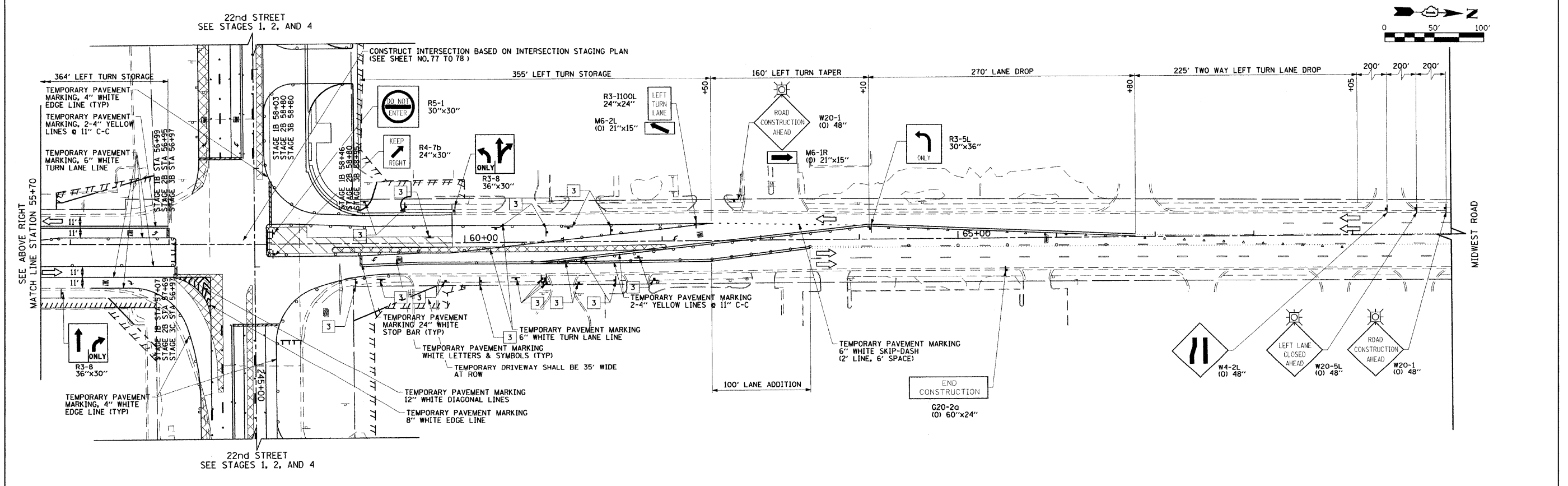


NOTE:
FOR TOLL ROAD I-88 SIGNING, THE ROAD CONSTRUCTION AHEAD SIGNS SHALL BE SPACED IN HALF MILE INCREMENTS STARTING AT THE BEGINNING OF THE MIDWEST ROAD EXIT RAMP. A CHANGEABLE MESSAGE SIGN NOTING THE MIDWEST ROAD CONSTRUCTION SHALL BE PLACED ONE MILE PRIOR TO THE MIDWEST ROAD EXIT RAMP.

0 50' 100'

LEGEND

- CONSTRUCTION WORK ZONE
- TEMPORARY PAVEMENT TO BE CONSTRUCTED PRIOR TO STAGE 1
- TEMPORARY PAVEMENT TO BE CONSTRUCTED PRIOR TO STAGE 2
- ARROW BOARD
- SIGN TO BE PLACED ON PERMANENT OR PORTABLE SUPPORT
- MONODIRECTIONAL FLASHING LIGHT
- DRUMS OR TYPE II BARRICADE WITH STEADY BURN LIGHT @ 50' C-C (TYP), 25' C-C IN CURVES AND RADII, AND 20' C-C IN TAPERS
- TYPE III BARRICADE
- VERTICAL PANELS WITH STEADY BURN LIGHT @ 50' C-C (TYP), 25' C-C IN CURVES AND RADII, AND 20' C-C IN TAPERS
- DIRECTION INDICATOR BARRICADES WITH STEADY BURN LIGHTS @ 20' C-C
- DIRECTION OF TRAFFIC FLOW
- DRIVEWAY ENTRANCE 30" X 30" SEE TC-26
- DRIVEWAY ENTRANCE 30" X 30" SEE TC-26
- R3-2 24" X 24"



FILE NAME = g:\ch07\0661\road\sheet\016012-SHT-1	USER NAME = jmgolemba	DESIGNED - TKH	REVISED -	STATE OF ILLINOIS DEPARTMENT OF TRANSPORTATION	SUGGESTED CONSTRUCTION PROCEDURES AND MAINTENANCE OF TRAFFIC - MIDWEST ROAD STAGE B	F.A.U. RTE. 1453	SECTION 55WRS	COUNTY DUJPAGE	TOTAL SHEETS 362	SHEET NO. 73	
PLOT SCALE = 50.0000' / IN.	PLANTING-MIDWEST-B.dgn	DRAWN - BAW	REVISED -			SCALE: 1"=50'	SHEET NO. 73 OF 362 SHEETS	STA. 41+00	TO STA. 65+00	CONTRACT NO. 60D12	FED. ROAD DIST. NO. 7 ILLINOIS FED. AID PROJECT
PLOT DATE = 12/5/2009		CHECKED - JRH	REVISED -								
		DATE - 07/24/2009	REVISED -								