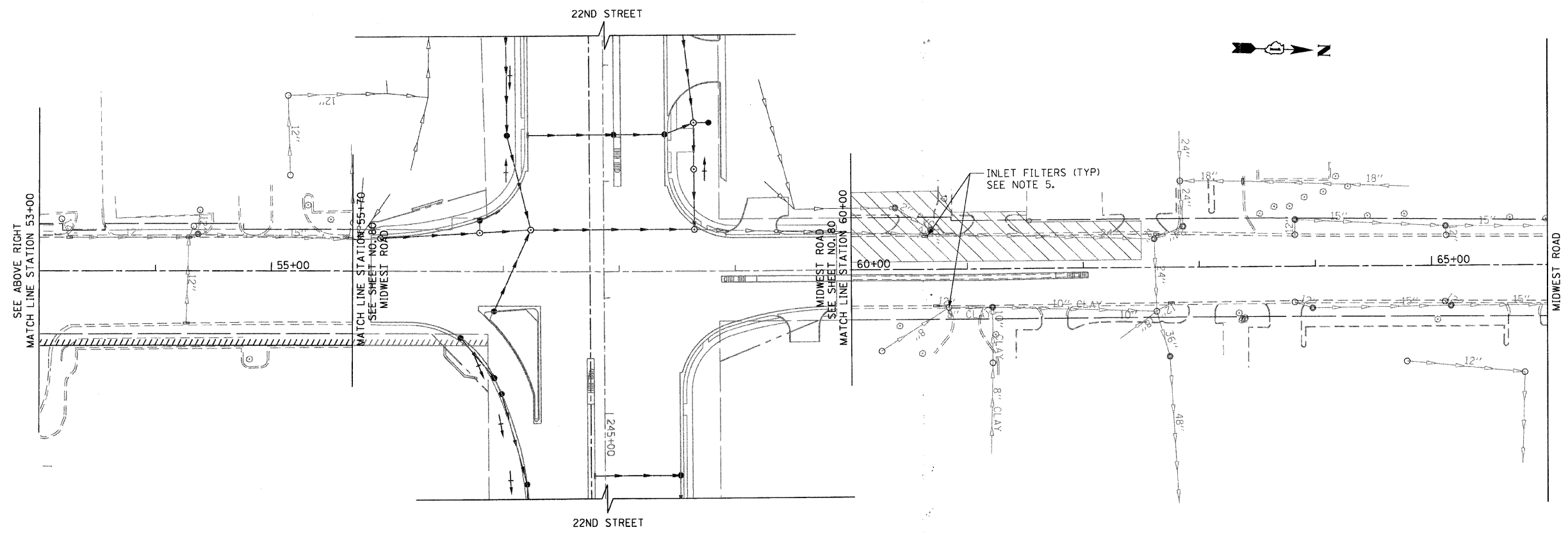


FOR LEGEND AND NOTES
SEE SHEET NO. 79



FILE NAME : \\s077\me07081.22nd.st\me07081\Shots\1169012-SHT-EROS106-MIDWEST.dgn
 PLOT SCALE : E:\2006\1169012-SHT-EROS106-MIDWEST.dgn
 USER NAME : Millennium_Engineering



200 22ND Street, Suite 216, Lombard, IL 60148
 630.705.0110 voice, 630.839.2566 fax
 www.millenniaeng.com
MILLENNIA ENGINEERING

| | |
|------------------|-----------|
| DESIGNED - TVN | REVISED - |
| DRAWN - TVN | REVISED - |
| CHECKED - RPD | REVISED - |
| DATE - 7/24/2009 | REVISED - |

STATE OF ILLINOIS
DEPARTMENT OF TRANSPORTATION

MIDWEST ROAD EROSION CONTROL PLAN
STAGE I & II

SCALE: 1"=50' SHEET NO. 84 OF 362 SHEETS STA. 41+00 TO STA. 65+00

| | | | | |
|---|---------|--------|--------------|-----------|
| F.A.U. RTE. | SECTION | COUNTY | TOTAL SHEETS | SHEET NO. |
| 1453 | 55WRS | DUPAGE | 362 | 84 |
| CONTRACT NO. 60D12 | | | | |
| FED. ROAD DIST. NO. 7 [ILLINOIS] FED. AID PROJECT | | | | |

ER106

\\s077\me07081.22nd.st\me07081\Shots\1169012-SHT-EROS106-MIDWEST.dgn