

NOTES:

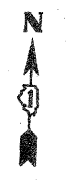
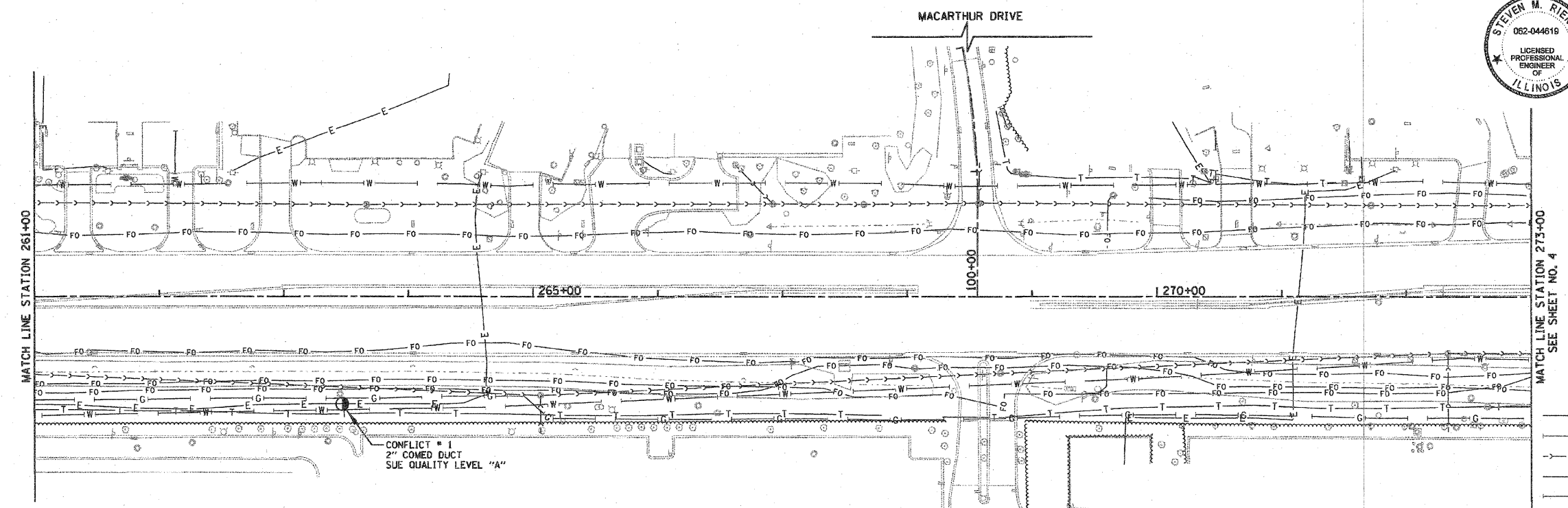
1. HORIZONTAL CONTROL, VERTICAL CONTROL, CENTERLINE ALIGNMENT, TOPOGRAPHIC FEATURES, AND ALL UTILITY LINE WORK (EXCEPTING SUE QUALITY LEVEL A LOCATIONS) WERE SUPPLIED BY ILLINOIS DEPARTMENT OF TRANSPORTATION, CONTRACT NUMBER 60D12, DATED DECEMBER 19, 2008.

STATE OF ILLINOIS)
) S.S.
 COUNTY OF COOK)

UTILITY(IES) SHOWN HEREON HAVE BEEN INVESTIGATED BY ASE IN ACCORDANCE WITH SUE INDUSTRY STANDARDS QUALITY LEVEL A (Q1A) AND QUALITY LEVEL B (Q1B). ALL OTHER INFORMATION SHOWN HAS BEEN PROVIDED BY OTHERS.

FIELD WORK WAS PERFORMED BETWEEN THE 11TH OF FEBRUARY AND 10TH DAY OF MARCH, A.D., 2010.

IN WITNESS WHEREOF, I HAVE HEREUNTO SET MY HAND AND SEAL THIS 12TH DAY OF MARCH, A.D., 2010. CHICAGO, IL.



Steven M. Rienks
 STEVEN M. RIENKS ILLINOIS PROFESSIONAL
 ENGINEER NUMBER 62-044619
 MY LICENSE EXPIRES 11/30/2011

LEGEND

- CONFLICT # (SUE QUALITY LEVEL A)
- T — EXISTING UNDERGROUND TELEPHONE
- W — EXISTING UNDERGROUND WATER
- S — EXISTING SANITARY SEWER FORCE MAIN
- E — EXISTING UNDERGROUND ELECTRIC
- G — EXISTING UNDERGROUND GAS
- CTV — EXISTING UNDERGROUND CABLE TV
- A — EXISTING OVERHEAD UTILITY LINE CROSSING
- FO — EXISTING UNDERGROUND FIBER OPTIC

AMERICAN
 SURVEYING & ENGINEERING, P.C.
 SURVEYORS - ENGINEERS
 GEODESISTS - MAPPING SCIENTISTS
 Chicago: 312-277-2000 / Fax 312-277-2002
 Illinois: 815-288-6231 / Fax 815-288-6277
 Aurora: 630-897-4105 / Fax 630-897-4121
 Illinois Professional Design Firm No. 184-003192

VERIFIED UTILITY INFORMATION - SUE QUALITY LEVEL A

| CONFLICT NO. | SIZE / TYPE | NORTHING | EASTING | STATION | OFFSET | TOP OF UTILITY | EXISTING CUT | REFERENCE GROUND ELEV. | COMMENTS |
|--------------|---------------|------------|------------|-----------|-----------|----------------|--------------|------------------------|----------|
| 1 | 2" ELEC. DUCT | 1886763.85 | 1084571.58 | 263+46.83 | 85.84 RT. | 687.87 | 4.07 | 691.94 | COMED |

| | | | |
|-------------------|------------------------------|----------------|-----------|
| FILE NAME = | USER NAME = #USER# | DESIGNED - JWG | REVISED - |
| WD-341.SHEETS.dgn | | DRAWN - BAW | REVISED - |
| | PLLOT SCALE = 50.0000' / IN. | CHECKED - JRH | REVISED - |
| | PLLOT DATE = 3/12/2010 | DATE - #DATE | REVISED - |

STATE OF ILLINOIS
DEPARTMENT OF TRANSPORTATION

22nd STREET REMOVAL PLAN AND ROADWAY PLAN

SCALE: 1"=50' SHEET NO. 1 OF 2 SHEETS STA. 248+00 TO STA. 273+00

| | | | | |
|---|---------|--------|--------------------|-----------|
| F.A.J. RTE. | SECTION | COUNTY | TOTAL SHEETS | SHEET NO. |
| 1453 | 55WRS | | 362 | 144A |
| FED. ROAD DIST. NO. 7 ILLINOIS FED. AID PROJECT | | | CONTRACT NO. 60D12 | |