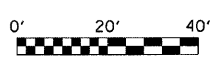
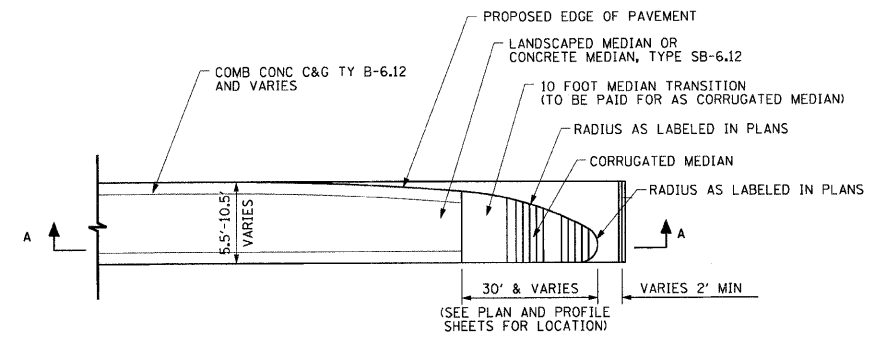


DRIVEWAY DETAIL

ILLINOIS ROUTE 56
 (BUTTERFIELD ROAD)
 STATION 16+78 LT
 STATION 17+21 LT
 STATION 36+56 RT
 STATION 36+79 RT



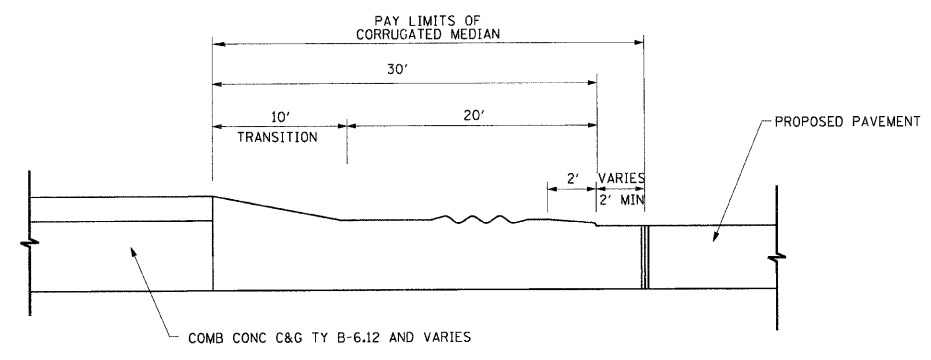
NOTE: PROPOSED ISLANDS SHALL BE CONSTRUCTED IN ACCORDANCE WITH STANDARD 606301. ALL SIDEWALK RAMPS MUST BE ADA COMPLIANT (STANDARD 424001).



CORRUGATED MEDIAN

AT MEDIAN TERMINI

NOTE: CORRUGATED MEDIAN SHALL BE CONSTRUCTED IN ACCORDANCE WITH APPLICABLE PORTIONS OF STANDARD 606306



SECTION A - A

FILE NAME =	USER NAME = BAW:tor-t	DESIGNED - ORB	REVISED -
g:\ch07\0061\road\sheet\162012-SHT-DR\DET2.dgn		DRAWN - BRW	REVISED -
	PLOT SCALE = 20.0000' / IN.	CHECKED - JRH	REVISED -
	PLOT DATE = 8/5/2009	DATE - 07/24/2009	REVISED -

STATE OF ILLINOIS
DEPARTMENT OF TRANSPORTATION

DRIVEWAY AND MEDIAN DETAILS

SCALE: 1"=20' SHEET NO. 164 OF 362 SHEETS

F.A. RTE.	SECTION	COUNTY	TOTAL SHEETS	SHEET NO.
1453	55WRS	DuPAGE	362	164
CONTRACT NO. 60D12				
FED. ROAD DIST. NO. 7 ILLINOIS FED. AID PROJECT				