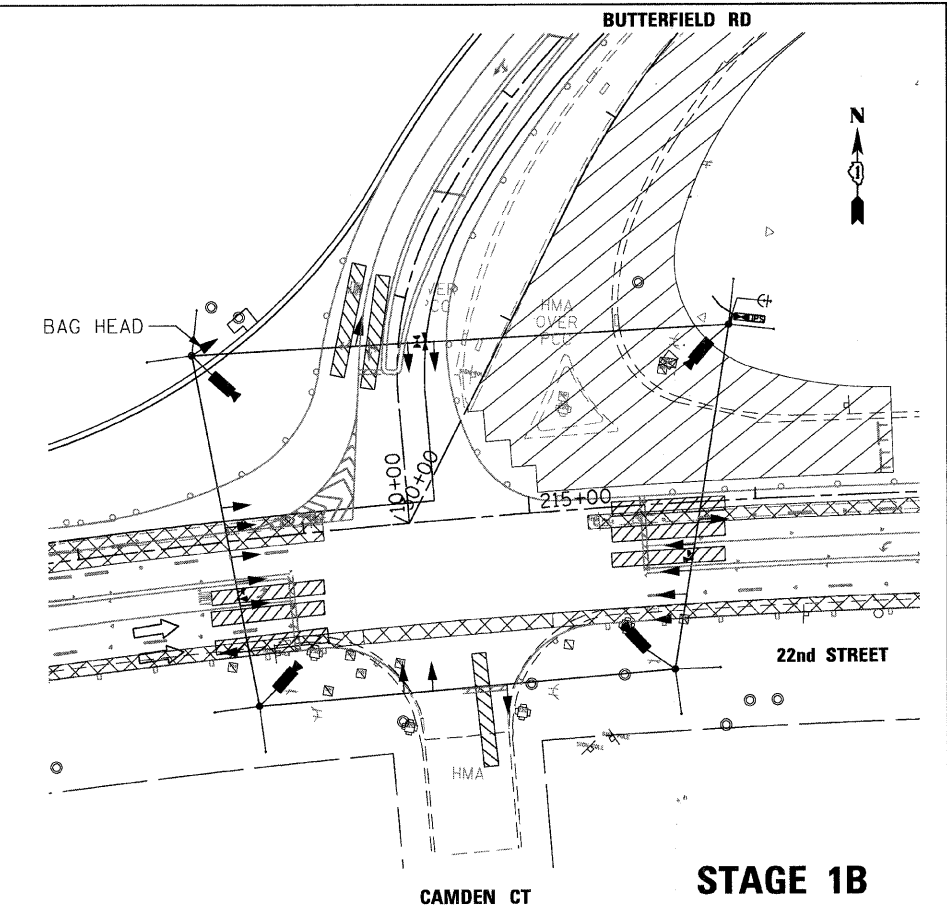
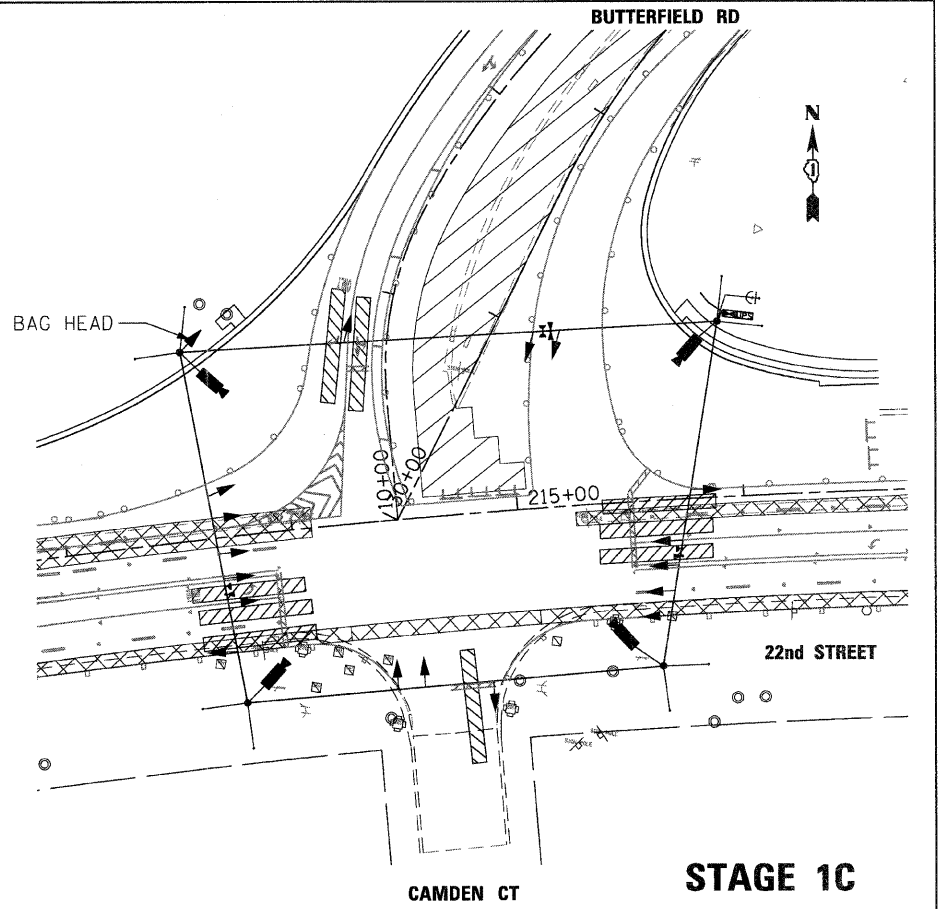


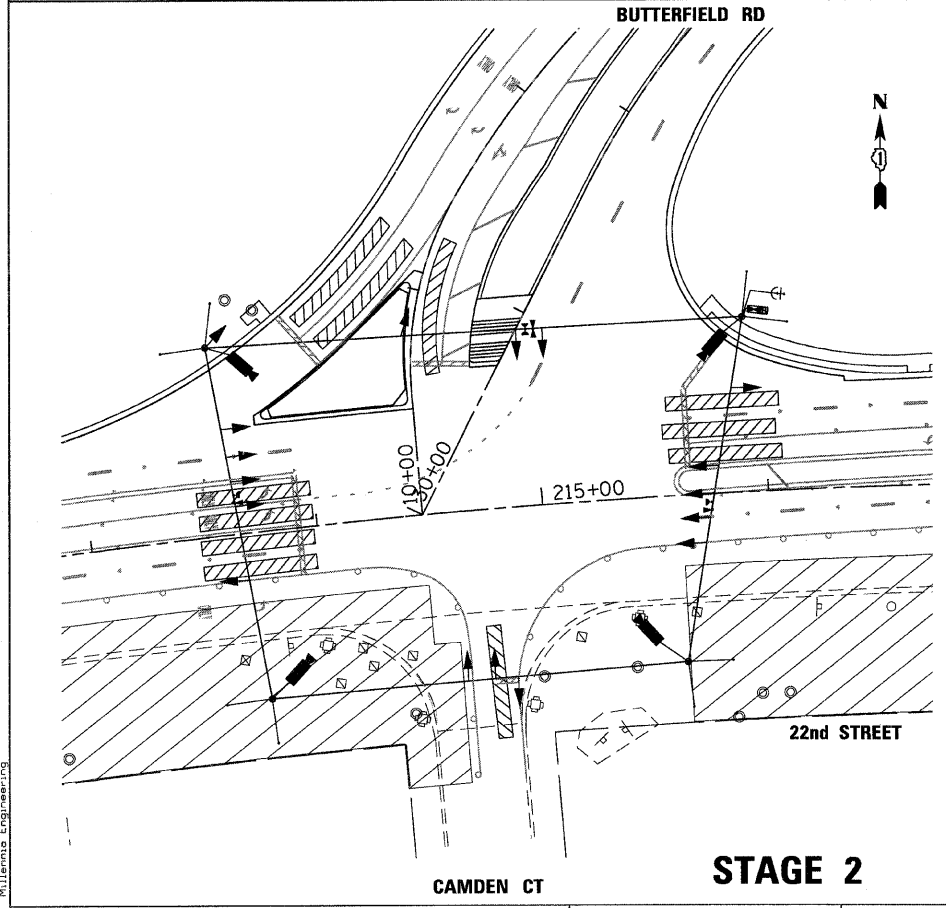
STAGE 1A



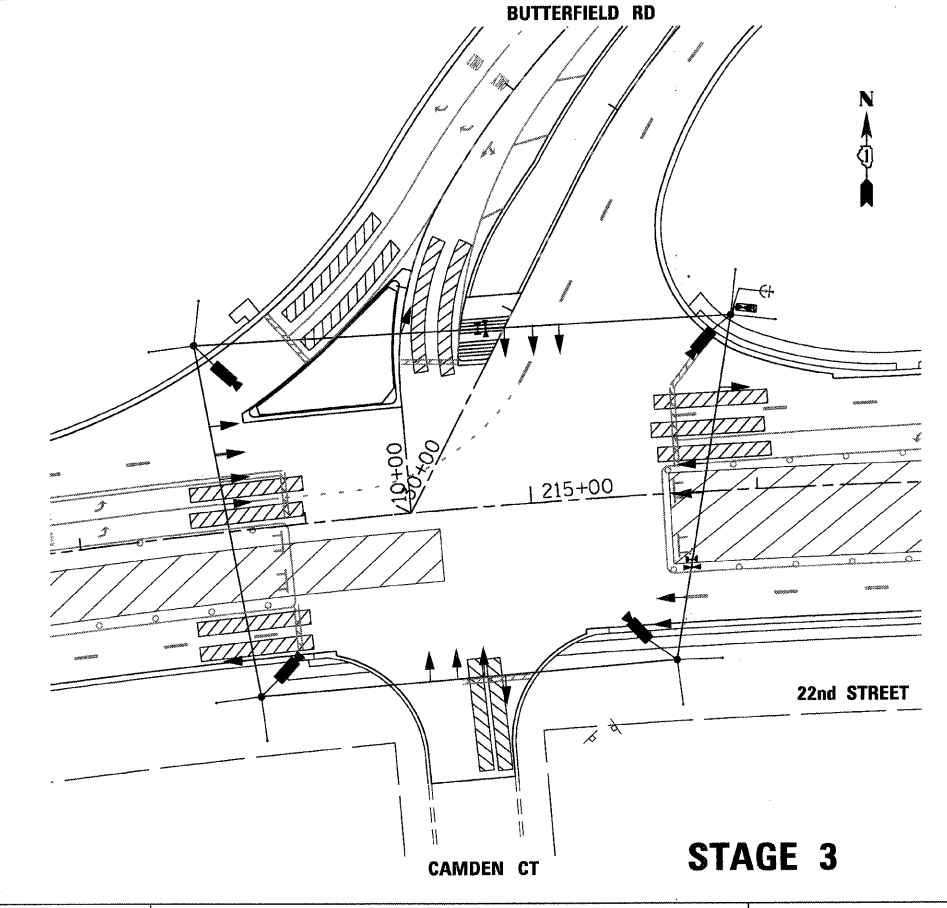
STAGE 1B



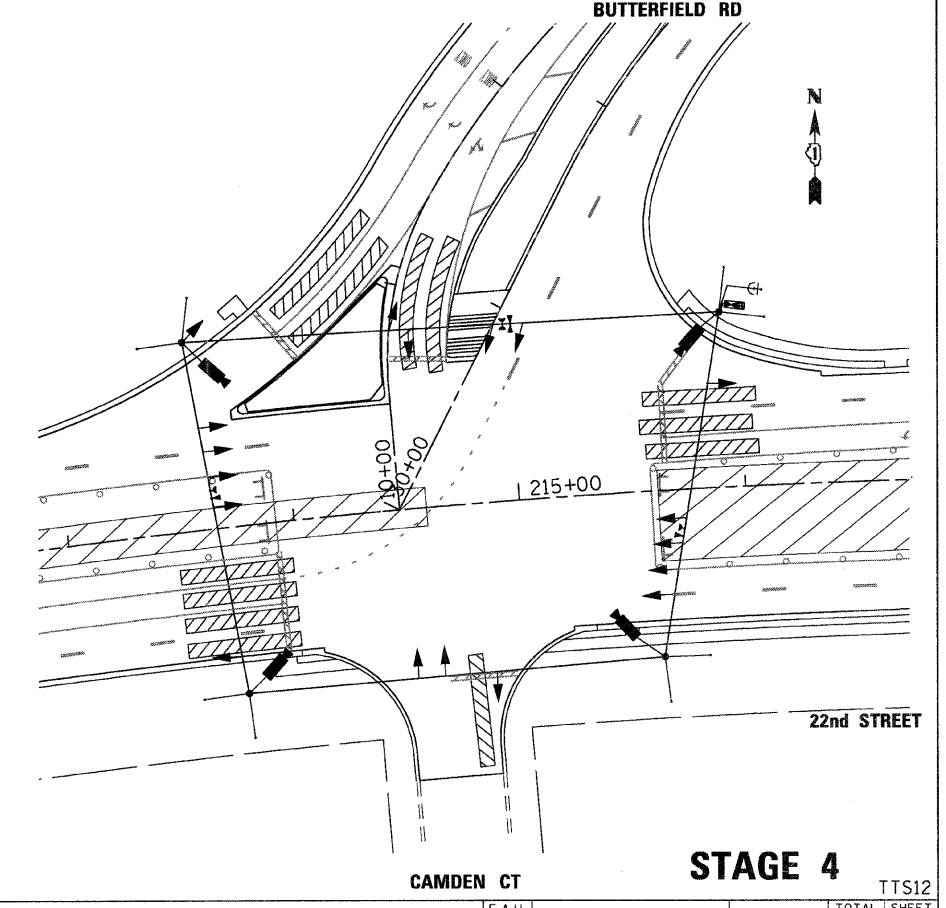
STAGE 1C



STAGE 2



STAGE 3



STAGE 4

FILE NAME: \\m07081\22nd.stree\add\shs\0160012-SHT-TTS01-Butterfield-02.dgn
 PLOT SCALE: 1/4"=1'-0"
 USER NAME: Millennia_Engineering

200 22ND Street, Suite 216, Lombard, IL 60148
 630.705.0110 voice, 630.839.2566 fax
 www.milleniaeng.com
MILLENNIA ENGINEERING

DESIGNED - TVN	REVISED -
DRAWN - TVN	REVISED -
CHECKED - RPD	REVISED -
DATE - 7/24/2009	REVISED -

STATE OF ILLINOIS
DEPARTMENT OF TRANSPORTATION

22nd STREET AT BUTTERFIELD RD (IL RTE 56)
TEMPORARY TRAFFIC SIGNAL M.O.T. STAGING PLAN

SCALE: SHEET NO. OF 362 SHEETS STA. TO STA.

F.A.U. RTE. 1453	SECTION 55WRS	COUNTY DUPAGE	TOTAL SHEETS 362	SHEET NO. 195
FED. ROAD DIST. NO. 7 ILLINOIS FED. AID PROJECT			CONTRACT NO. 60D12	

pt:\2007\me07081\22nd.stree\add\shs\0160012-SHT-TTS01-Butterfield-02.dgn