

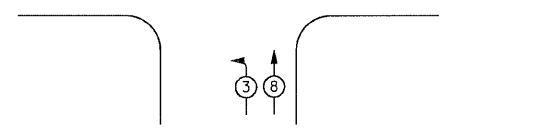
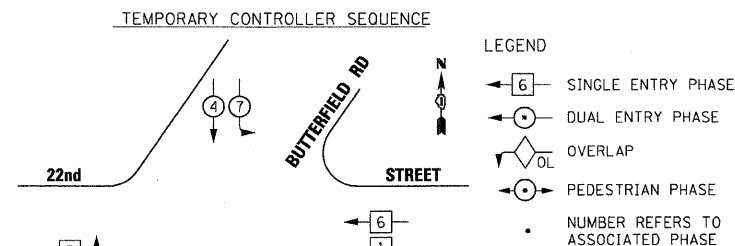
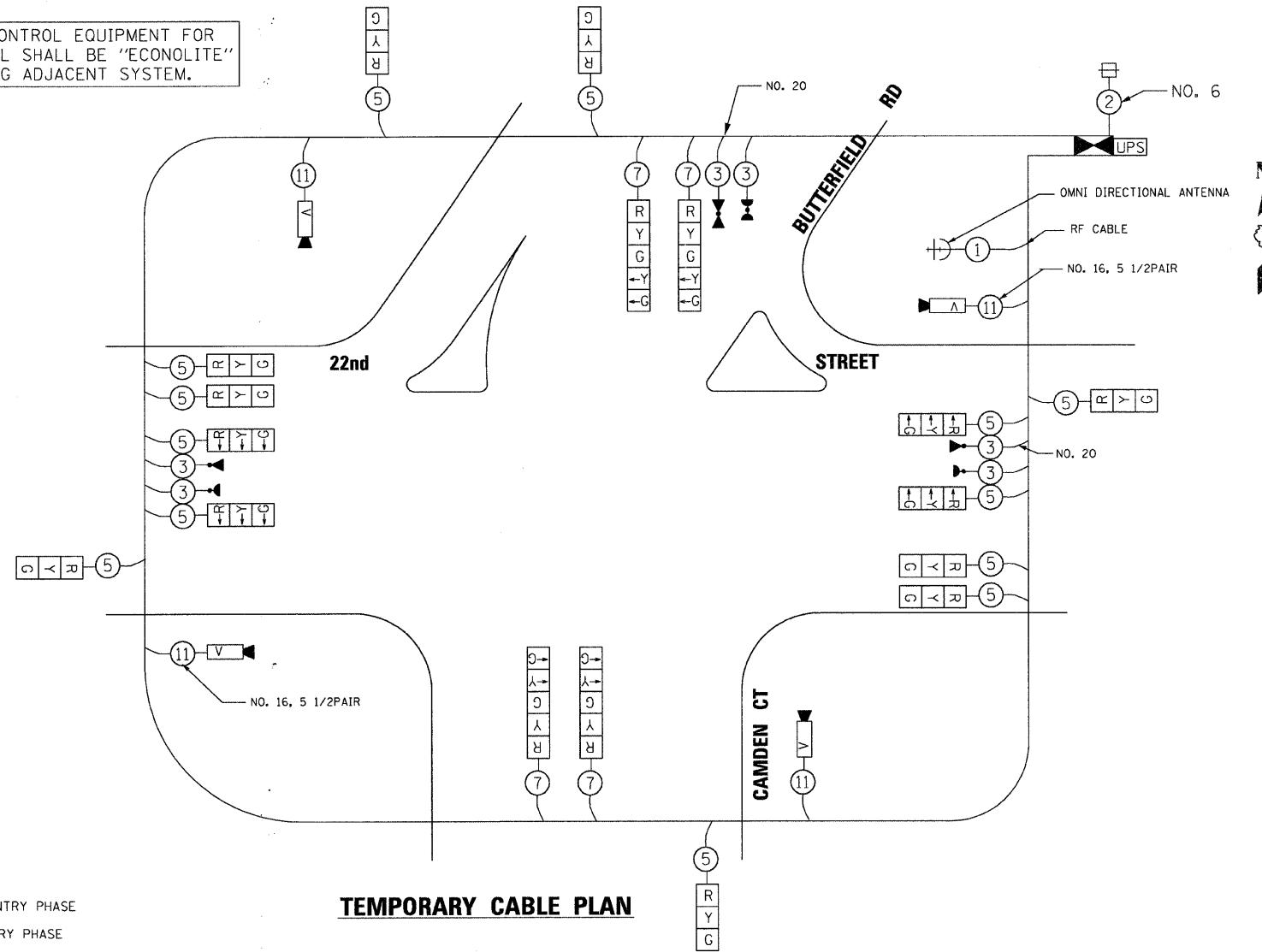
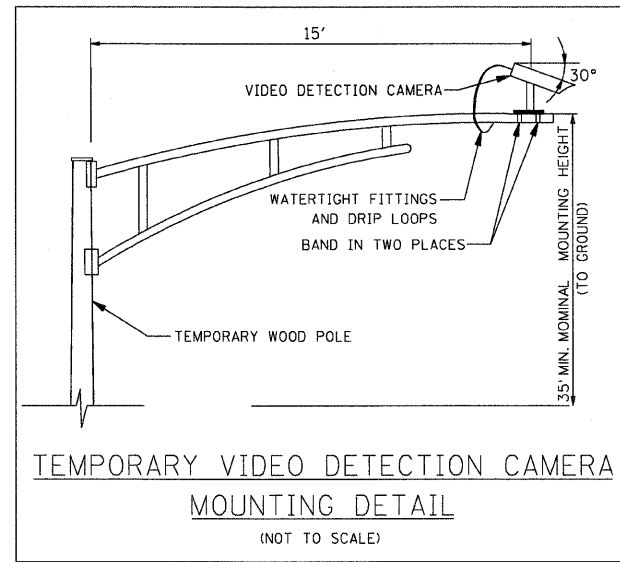
TEMPORARY CABLE DIAGRAM LEGEND

- R TEMPORARY TRAFFIC SIGNAL SECTION OR PEDESTRIAN SIGNAL SECTION 12" (300mm)
- X TEMPORARY CONTROLLER CABINET
- 2 INDICATES NUMBER OF CONDUCTORS IN CABLE. ALL CONDUCTORS TO BE NUMBER 14 AWG WIRE UNLESS OTHERWISE NOTED.
- S TEMPORARY SERVICE INSTALLATION
- ▲ EMERGENCY VEHICLE LIGHT DETECTOR
- CONFIRMATION BEACON
- P PEDESTRIAN PUSHBUTTON DETECTOR
- V VEHICULAR DETECTOR, INDUCTION LOOP
- V VIDEO VEHICLE DETECTION CAMERA
- C CLOSED CIRCUIT TV
- T TELEPHONE CONNECTION
- + TEMPORARY RADIO INTERCONNECT
- UPS UNINTERRUPTIBLE POWER SUPPLY

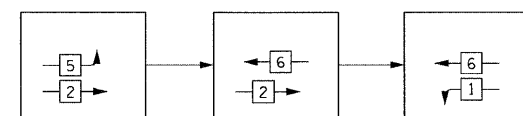
NOTES

1. ONLY AN APPROVED IDOT ELECTRICAL SUBCONTRACTOR WILL BE PERMITTED TO INSTALL AND ADJUST VIDEO VEHICLE DETECTION SYSTEM AS REQUIRED BY STAGE/PHASE CHANGES.
2. FOR TEMPORARY TRAFFIC SIGNAL CONTROLLER PLATFORM DETAIL. SEE SHEET NO. 227.

THE TRAFFIC SIGNAL CONTROL EQUIPMENT FOR THIS TEMPORARY SIGNAL SHALL BE "ECONOLITE" TO MATCH THE EXISTING ADJACENT SYSTEM.

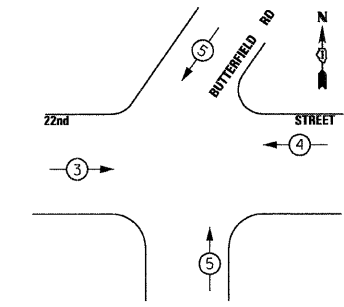


FOR PHASES 1, 2, 5, & 6 IN THE PHASE DESIGNATION DIAGRAM SHOWN ABOVE, THE FOLLOWING PHASE SEQUENCE SHALL BE FOLLOWED:



PHASES 3, 4, 7 & 8 SHALL FOLLOW THE STANDARD SEQUENCE IN ACCORDANCE WITH STATE STANDARD 857001

EMERGENCY VEHICLE PREEMPTION SEQUENCE



PROPOSED EMERGENCY VEHICLE PREEMPTORS			
EMERGENCY VEHICLE PREEMPTOR	3	4	5
MOVEMENT	→	←	↑ ↓

I.D.O.T. TRAFFIC SIGNAL INSTALLATION ELECTRICAL SERVICE REQUIREMENTS						TOTAL WATTAGE
TYPE	NO. OF LAMPS	WATTAGE INCAND.	WATTAGE L.E.D.	OPERATION		
SIGNAL (RED)	17	135	17	0.50		144.5
(YELLOW)	17	135	25	0.25		106.3
(GREEN)	17	135	15	0.25		63.8
ARROW	8	135	12	0.10		9.6
PED. SIGNAL		90	25	1.00		
CONTROLLER	1	100	100	1.00		100
ILLUM. SIGN		84		0.05		
VIDEO VEH. SENSOR	4	15	15	1.00		60
FLASHER				0.50		
TOTAL						484.2

ILLINOIS DEPARTMENT OF TRANSPORTATION
 DIVISION OF HIGHWAY/DISTRICT 1
 201 CENTER CT/SCHAUMBURG, IL 60196-1096
 ENERGY SUPPLY - CONTACT: DEB RANKIN
 PHONE: 630-691-4379
 COMPANY: COMMONWEALTH EDISON

DESIGNED - TVN	REVISED -
DRAWN - TVN	REVISED -
CHECKED - RPD	REVISED -
DATE - 7/24/2009	REVISED -

STATE OF ILLINOIS DEPARTMENT OF TRANSPORTATION

22nd STREET AT BUTTERFIELD RD (IL RTE 56)
 TEMPORARY TRAFFIC SIGNAL CABLE PLAN, AND PHASE DESIGNATION DIAGRAM
 SCALE: SHEET NO. 196 OF 362 SHEETS STA. TO STA.

F.A.U. RTE. 1453	SECTION 55WRS	COUNTY DUPAGE	TOTAL SHEETS 362	SHEET NO. 196
FED. ROAD DIST. NO. 7 [ILLINOIS] FED. AID PROJECT				CONTRACT NO. 60D12

FILE NAME: p:\2007\me07081_22nd.stree\ced\shs\0160D12-SHT-TTS01-Butterfield-03.dgn
 PLOT SCALE: 20/0000
 USER NAME: Millennium Engineering