

**TEMPORARY TRAFFIC SIGNAL LEGEND**

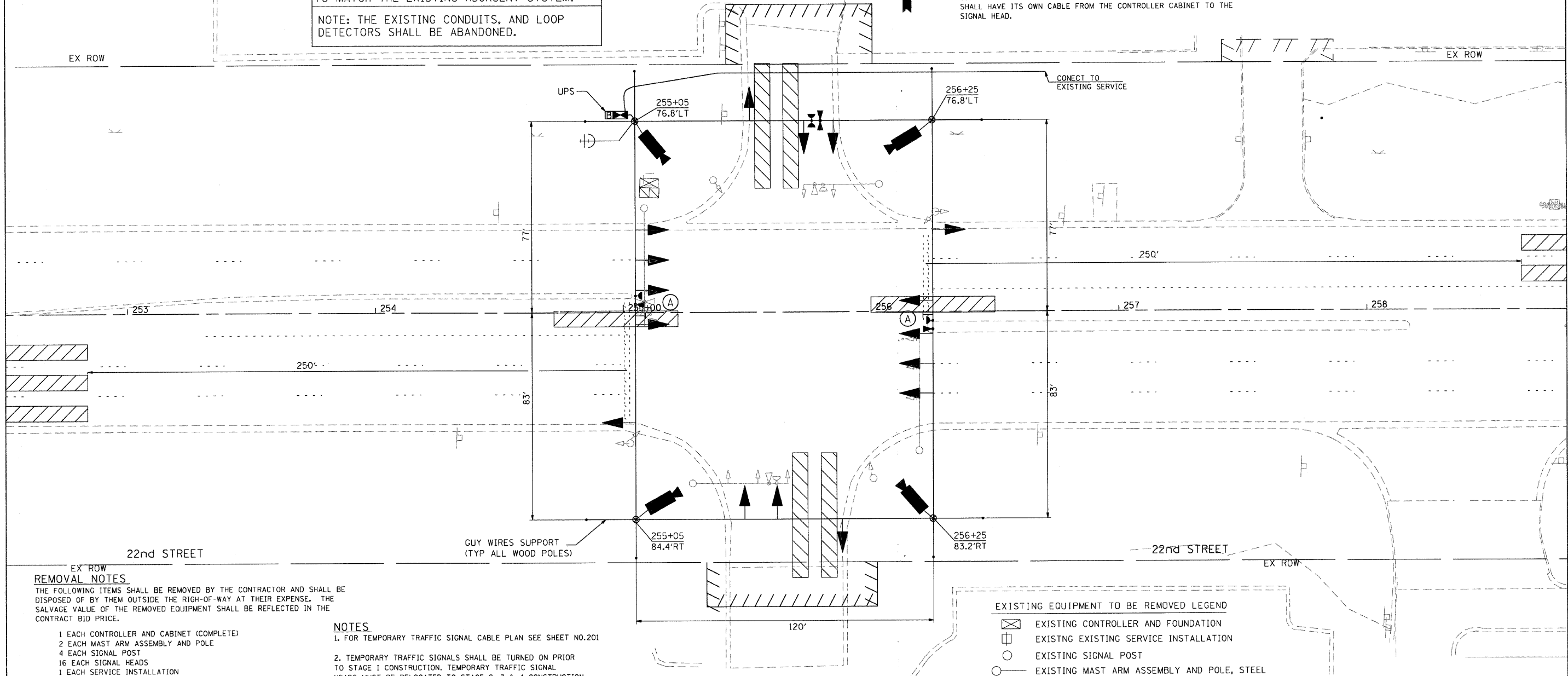
- ← TEMPORARY TRAFFIC SIGNAL HEAD SPAN WIRE MOUNTED ORIGINAL LOCATION
- ⊗ TEMPORARY WOOD POLE (CLASS 5 OR BETTER) 45 FOOT (13.7m) MINIMUM
- ⊠ TEMPORARY CONTROLLER CABINET
- TEMPORARY SPAN WIRE, TETHER WIRE, AND CABLE
- ⊞ TEMPORARY SERVICE INSTALLATION
- ⊞ TEMPORARY PEDESTRIAN SIGNAL HEAD, BRACKET MOUNTED
- ⊞ PEDESTRIAN PUSHBUTTON DETECTOR
- ⊞ EMERGENCY VEHICLE LIGHT DETECTOR
- ⊞ CONFIRMATION BEACON
- VEHICLE DETECTOR, INDUCTION LOOP
- CT COMMON TRENCH
- UD UNIT DUCT
- G.S. CONDUIT IN TRENCH OR PUSHED
- H HEAVY DUTY HANDHOLE
- ⊞ VIDEO VEHICLE DETECTOR CAMERA
- ▨ TEMPORARY VIDEO DETECTION ZONE (50' TYPICAL)
- ⊞ TEMPORARY RADIO INTERCONNECT
- ⊞ UNINTERRUPTIBLE POWER SUPPLY

**LEFT ON GREEN  
ARROW  
ONLY**  
 R10-5  
24"x30"

THE TRAFFIC SIGNAL CONTROL EQUIPMENT FOR THIS TEMPORARY SIGNAL SHALL BE "ECONOLITE" TO MATCH THE EXISTING ADJACENT SYSTEM.  
 NOTE: THE EXISTING CONDUITS, AND LOOP DETECTORS SHALL BE ABANDONED.

**NOTES FOR TEMPORARY TRAFFIC SIGNALS**

1. ALL CONTROL EQUIPMENT INCLUDING EMERGENCY PRE-EMPTION AND COMMUNICATION DEVICES FOR THE TEMPORARY TRAFFIC SIGNAL(S) SHALL BE FURNISHED BY THE CONTRACTOR.
2. ONLY CONTROLLERS SUPPLIED BY ONE OF THE DISTRICT APPROVED CLOSED LOOP EQUIPMENT MANUFACTURERS WILL BE APPROVED FOR USE AT TEMPORARY SIGNAL LOCATIONS. ALL CONTROLLERS USED FOR MICROPROCESSOR BASE WITH RS232 DATA ENTRY PORTS COMPATIBLE WITH EXISTING MONITORING SOFTWARE APPROVED BY IDOT DISTRICT 1 INSTALLED IN A NEMA TS1 OR TS2 CABINET. ONLY ONE BRAND OF CONTROLLER WILL BE ACCEPTED FOR ANY ONE CONTRACT.
3. ALL TRAFFIC SIGNAL SECTIONS AND PEDESTRIAN SIGNAL SECTIONS SHALL BE 12". HEADS SHALL BE PLACED AS INDICATED ON THE TEMPORARY TRAFFIC SIGNAL PLAN OR AS DIRECTED BY THE ENGINEER. THE CONTRACTOR SHALL FURNISH ENOUGH CABLE SLACK TO RELOCATE HEADS TO ANY POSITION ON THE SPAN WIRE OR AT LOCATIONS ILLUSTRATED ON THE PLANS FOR CONSTRUCTION STAGING. THE TEMPORARY TRAFFIC SIGNAL SHALL REMAIN IN OPERATION DURING ALL SIGNAL HEAD RELOCATIONS, EACH TEMPORARY TRAFFIC SIGNAL HEAD SHALL HAVE ITS OWN CABLE FROM THE CONTROLLER CABINET TO THE SIGNAL HEAD.
4. ALL EXISTING STREET NAME AND INTERSECTION REGULATORY SIGNS SHALL BE REMOVED FROM EXISTING POLES, RELOCATED AND SECURELY FASTENED TO THE SIGNAL SPAN WIRE OR WOOD POLE AS DIRECTED BY THE ENGINEER.
5. ANY TEMPORARY SIGNAL WITHIN AN EXISTING CLOSED LOOP TRAFFIC SIGNAL SYSTEM SHALL BE INTERCONNECTED TO THAT SYSTEM USING SIMILAR BRAND CONTROL EQUIPMENT.
6. THE TEMPORARY TRAFFIC SIGNAL SHALL HAVE THE SIGNAL HEAD DISPLAYS, SIGNAL HEAD PLACEMENTS AND CONTROLLER PHASING MATCH THE EXISTING TRAFFIC STAGING ARE IN PLACE OR WILL NOT BE STAGED ON THE DAY OF THE TURN ON.
7. 24" WHITE STOP BAR MUST BE IN PLACE AT THE TIME OF SIGNAL TURN ON.
8. RIGHT-TURN OVERLAP ARROW SECTIONS SHALL BE BAGGED UNTIL RIGHT TURN LANES ARE OPEN TO TRAFFIC



**REMOVAL NOTES**  
 THE FOLLOWING ITEMS SHALL BE REMOVED BY THE CONTRACTOR AND SHALL BE DISPOSED OF BY THEM OUTSIDE THE RIGHT-OF-WAY AT THEIR EXPENSE. THE SALVAGE VALUE OF THE REMOVED EQUIPMENT SHALL BE REFLECTED IN THE CONTRACT BID PRICE.

- 1 EACH CONTROLLER AND CABINET (COMPLETE)
- 2 EACH MAST ARM ASSEMBLY AND POLE
- 4 EACH SIGNAL POST
- 16 EACH SIGNAL HEADS
- 1 EACH SERVICE INSTALLATION

**NOTES**

1. FOR TEMPORARY TRAFFIC SIGNAL CABLE PLAN SEE SHEET NO.201
2. TEMPORARY TRAFFIC SIGNALS SHALL BE TURNED ON PRIOR TO STAGE 1 CONSTRUCTION. TEMPORARY TRAFFIC SIGNAL HEADS MUST BE RELOCATED TO STAGE 2, 3 & 4 CONSTRUCTION LOCATION PRIOR TO THE START OF STAGE 2, 3 & 4 CONSTRUCTION AS SHOWN ON THE PLANS.
3. ONLY AN APPROVED IDOT ELECTRICAL SUBCONTRACTOR WILL BE PERMITTED TO INSTALL AND ADJUST VIDEO VEHICLE DETECTION SYSTEM AS REQUIRED BY STAGE/PHASE CHANGES.
4. FOR TEMPORARY TRAFFIC SIGNAL CONTROLLER PLATFORM DETAIL TEMPORARY VIDEO DETECTION CAMERA MOUNTING DETAIL SEE SHEET NO. 227

**EXISTING EQUIPMENT TO BE REMOVED LEGEND**

- ⊞ EXISTING CONTROLLER AND FOUNDATION
- ⊞ EXISTING EXISTING SERVICE INSTALLATION
- ⊞ EXISTING SIGNAL POST
- ⊞ EXISTING MAST ARM ASSEMBLY AND POLE, STEEL
- ⊞ EXISTING MAST ARM ASSEMBLY AND POLE, ALUMINUM
- ⊞ EXISTING HANDHOLE
- ⊞ EXISTING HEAVY DUTY HANDHOLE

FILE NAME : p:\2007\me07081-22nd-street\roads\shs\0168012-SHT-TTS03-0akbrook-01.dgn  
 USER NAME : Millennium Engineering

**MILLENNIA ENGINEERING**  
 200 22ND Street, Suite 216, Lombard, IL 60148  
 630.785.0110 voice, 630.839.2566 fax  
 www.millenniaeng.com

DESIGNED - TVN	REVISED -
DRAWN - TVN	REVISED -
CHECKED - RPD	REVISED -
DATE - 7/24/2009	REVISED -

**STATE OF ILLINOIS  
DEPARTMENT OF TRANSPORTATION**

**22nd STREET AT SHOPS AT OAK BROOK PLACE  
TEMPORARY TRAFFIC SIGNAL INSTALLATION AND REMOVAL PLAN**

SCALE: 1"=20' SHEET NO. 205 OF 362 SHEETS STA. TO STA.

F.A.U. RTE.	SECTION	COUNTY	TOTAL SHEETS	SHEET NO.
1453	55WRS	DUPAGE	362	205
FED. ROAD DIST. NO. 7 ILLINOIS FED. AID PROJECT			CONTRACT NO. 60D12	

TTS31

p:\2007\me07081-22nd-street\roads\shs\0168012-SHT-TTS03-0akbrook-01.dgn