

SCHEDULE OF QUANTITIES

ITEM	UNIT	QUANTITY
CONDUIT IN TRENCH, 2" DIA., GALVANIZED STEEL	FOOT	637
CONDUIT IN TRENCH, 2 1/2" DIA., GALVANIZED STEEL	FOOT	35
CONDUIT IN TRENCH, 3" DIA., GALVANIZED STEEL	FOOT	18
CONDUIT IN TRENCH, 4" DIA., GALVANIZED STEEL	FOOT	73
CONDUIT IN TRENCH, 5" DIA., GALVANIZED STEEL	FOOT	10
CONDUIT PUSHED, 2" DIA., GALVANIZED STEEL	FOOT	229
CONDUIT PUSHED, 4" DIA., GALVANIZED STEEL	FOOT	396
HANDHOLE	EACH	3
HEAVY-DUTY HANDHOLE	EACH	5
DOUBLE HANDHOLE	EACH	2
TRENCH AND BACKFILL FOR ELECTRICAL WORK	FOOT	773
FULL-ACTUATED CONTROLLER AND TYPE IV CABINET, SPECIAL TRANSCIEVER - FIBER OPTIC	EACH	1
ELECTRIC CABLE IN CONDUIT, SIGNAL, NO. 14 2C	FOOT	695
ELECTRIC CABLE IN CONDUIT, SIGNAL, NO. 14 3C	FOOT	2025
ELECTRIC CABLE IN CONDUIT, SIGNAL, NO. 14 5C	FOOT	3523
ELECTRIC CABLE IN CONDUIT, SIGNAL, NO. 14 7C	FOOT	1025
ELECTRIC CABLE IN CONDUIT, LEAD-IN, NO. 14 1 PAIR	FOOT	6474
ELECTRIC CABLE IN CONDUIT, SERVICE, NO. 6 2 C	FOOT	188
TRAFFIC SIGNAL POST, GALVANIZED STEEL 14 FT.	EACH	1
TRAFFIC SIGNAL POST, GALVANIZED STEEL 16 FT.	EACH	1
STEEL MAST ARM ASSEMBLY AND POLE, 58 FT.	EACH	1
STEEL MAST ARM ASSEMBLY AND POLE, 68 FT.	EACH	1
STEEL MAST ARM ASSEMBLY AND POLE WITH DUAL MAST ARMS, 26 FT AND 44 FT.	EACH	1
STEEL MAST ARM ASSEMBLY AND POLE WITH DUAL MAST ARMS, 28 FT. AND 32 FT.	EACH	1
CONCRETE FOUNDATION, TYPE A	FOOT	8
CONCRETE FOUNDATION, TYPE C	FOOT	4
CONCRETE FOUNDATION, TYPE E 36-INCH DIAMETER	FOOT	30
CONCRETE FOUNDATION, TYPE E 42-INCH DIAMETER	FOOT	30
SIGNAL HEAD, LED, 1-FACE, 3-SECTION, MAST-ARM MOUNTED	EACH	14
SIGNAL HEAD, LED, 1-FACE, 3-SECTION, BRACKET MOUNTED	EACH	1
SIGNAL HEAD, LED, 1-FACE, 5-SECTION, BRACKET MOUNTED	EACH	2
SIGNAL HEAD, LED, 1-FACE, 5-SECTION, MAST-ARM MOUNTED	EACH	3
SIGNAL HEAD, LED, 2-FACE, 1-3 SECTION, 1-5 SECTION, BRACKET MOUNTED	EACH	1
PEDESTRIAN SIGNAL HEAD, LED, 1-FACE, BRACKET MOUNTED	EACH	2
PEDESTRIAN SIGNAL HEAD, LED, 2-FACE, BRACKET MOUNTED	EACH	2
TRAFFIC SIGNAL BACKPLATE, LOUVERED, ALUMINUM	EACH	17
INDUCTIVE LOOP DETECTOR	EACH	8
• DETECTOR LOOP, TYPE 1	FOOT	192
• LIGHT DETECTOR	EACH	3
LIGHT DETECTOR AMPLIFIER	EACH	1
PEDESTRIAN PUSH-BUTTON	EACH	4
TEMPORARY TRAFFIC SIGNAL INSTALLATION	EACH	1
REMOVE EXISTING TRAFFIC SIGNAL EQUIPMENT	EACH	1
REMOVE EXISTING HANDHOLE	EACH	8
REMOVE EXISTING CONCRETE FOUNDATION	EACH	8
PREFORMED DETECTOR LOOP	FOOT	510
TEMPORARY TRAFFIC SIGNAL TIMING	EACH	1
SERVICE INSTALLATION - POLE MOUNTED	EACH	1
ELECTRIC CABLE IN CONDUIT, GROUNDING, NO. 6 1C	FOOT	688
• ELECTRIC CABLE IN CONDUIT NO. 20 3/C, TWISTED, SHIELDED	FOOT	873
UNINTERRUPTIBLE POWER SUPPLY	EACH	1
TEMPORARY TRAFFIC SIGNAL INTERCONNECT	EACH	1

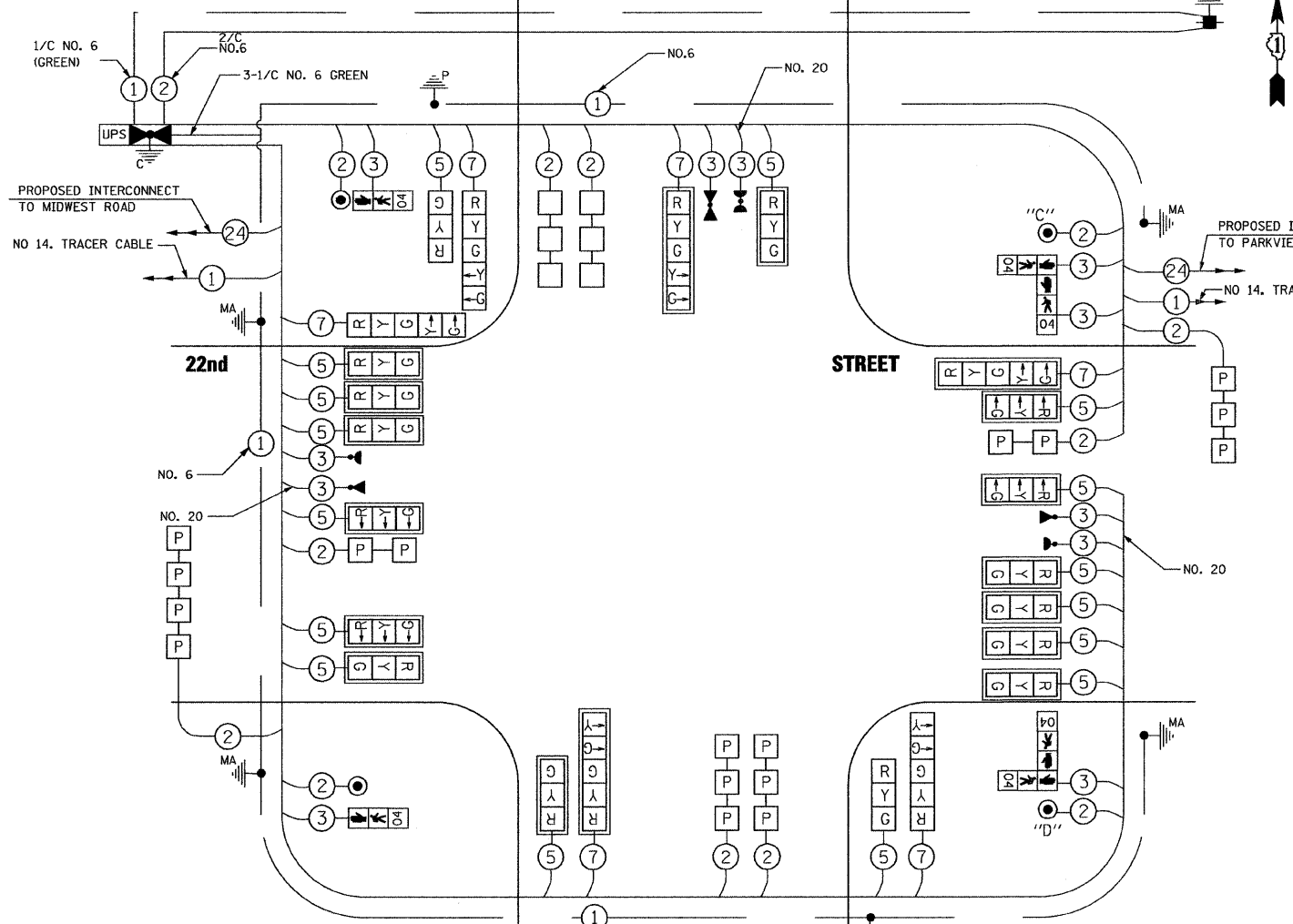
• 100% VILLAGE OF OAK BROOK COST

I.D.O.T TRAFFIC SIGNAL INSTALLATION ELECTRICAL SERVICE REQUIREMENTS					TOTAL WATTAGE
TYPE	NO. OF LAMPS	WATTAGE INCAND.	L.E.D.	OPERATION	
SIGNAL (RED)	19	135	17	0.50	178.5
(YELLOW)	19	135	25	0.25	131.3
(GREEN)	19	135	15	0.25	78.8
ARROW	12	135	12	0.10	14.4
PED. SIGNAL	4	90	25	1.00	150
CONTROLLER	1	100	100	1.00	100
ILLUM. SIGN		84		0.05	
VIDEO VEH. SENSOR					
FLASHER				0.50	
TOTAL					652.9

ILLINOIS DEPARTMENT OF TRANSPORTATION
DIVISION OF HIGHWAY/DISTRICT 1
201 CENTER CT/SCHAUMBURG, IL 60196-1096
CONTACT: DEB RANKIN
PHONE: 630-691-4379
COMPANY: COMMONWEALTH EDISON

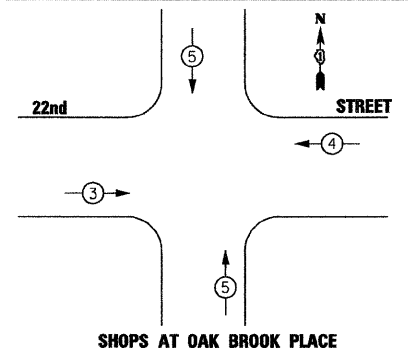
FOUNDATION (DEPTH)	(FEET) (m)	CABLE SLACK	(FEET) (m)	VERTICAL	(FEET) (m)
TYPE A - POST	4 , (1.2)	HANDHOLE	6.5 , (2.0)	ALL FOUNDATION	1.0 , (2.0)
D - CONTROLLER	4 , (1.2)	DOUBLE HANDHOLE	13 , (4.0)	MAST ARM (L) POLE	20'-H-2 = (6m-H-0.6m)=
E - M. ARM POLE	()	SIGNAL POST	2 , (1.0)	BRACKET MOUNTED	13 , (4.0)
24" (600mm)	10 , (3.0)	CONTROLLER CAB.	1 , (0.5)	PED. PUSHBUTTON	4 , (1.2)
30" (600mm)	15 , (4.5)	FIBER OPTIC	13 , (4.0)	ELECTRIC SERVICE	13.5 , (4.1)
42"	15 , (4.5)	ELECTRIC SERVICE	1 , (0.5)	SERVICE TO GROUND	13. , (4.1)
		GROUND CABLE	1 , (0.5)	POST MOUNTED	6 , (1.8)

COMMERCIAL ENTRANCE



**SHOPS AT OAK BROOK PLACE
CABLE PLAN**

EMERGENCY VEHICLE PREEMPTION SEQUENCE

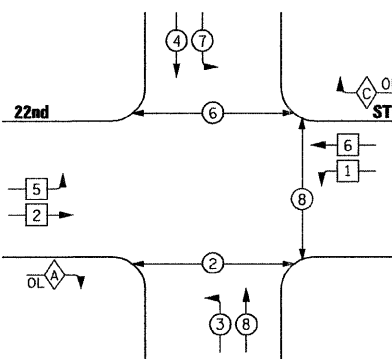


PROPOSED EMERGENCY VEHICLE PREEMPTORS			
EMERGENCY VEHICLE PREEMPTOR	3	4	5
MOVEMENT	→	←	↑↓

THE TRAFFIC SIGNAL CONTROL EQUIPMENT FOR THIS SIGNAL SHALL BE "ECONOLITE" TO MATCH THE EXISTING ADJACENT SIGNAL.

PUSH BUTTON NOTES:
PUSH BUTTON "C" SHALL PLACE A CALL IN PHASE 6 AND 8
PUSH BUTTON "D" SHALL PLACE A CALL IN PHASE 2 AND 8

PROPOSED CONTROLLER SEQUENCE



**SHOPS AT OAK BROOK PLACE
PHASE DESIGNATION DIAGRAM**



CABLE PLAN LEGEND

EXISTING	PROPOSED	DESCRIPTION
(Symbol)	(Symbol)	8" (200mm) TRAFFIC SIGNAL SECTION
(Symbol)	(Symbol)	12" (300mm) TRAFFIC SIGNAL SECTION
(Symbol)	(Symbol)	12" (300mm) PEDESTRIAN SIGNAL SECTION
(Symbol)	(Symbol)	12" (300mm) PEDESTRIAN SIGNAL SECTION WITH COUNTDOWN TIMER
(Symbol)	(Symbol)	CONTROLLER CABINET
(Symbol)	(Symbol)	SERVICE INSTALLATION
(Symbol)	(Symbol)	VEHICLE DETECTOR, INDUCTION LOOP
(Symbol)	(Symbol)	MAGNETIC DETECTOR
(Symbol)	(Symbol)	EMERGENCY VEHICLE LIGHT DETECTOR
(Symbol)	(Symbol)	CONFIRMATION BEACON
(Symbol)	(Symbol)	PUSHBUTTON DETECTOR
(Symbol)	(Symbol)	DENOTES NUMBER OF CONDUCTORS. ALL CABLE NO. 14 EXCEPT AS INDICATED. ALL LOOP DETECTOR CABLE TO BE SHIELDED.
(Symbol)	(Symbol)	SIGNAL FACE WITH BACKPLATE "P" INDICATES PROGRAMMED HEAD.
(Symbol)	(Symbol)	"E" RAILROAD CONTROL CABINET
(Symbol)	(Symbol)	"E" ILLUMINATED SIGN, FIBER OPTIC "NO LEFT TURN"
(Symbol)	(Symbol)	"E" ILLUMINATED SIGN, FIBER OPTIC "NO RIGHT TURN"
(Symbol)	(Symbol)	H/C GROUND ROD AT HANDHOLE, DOUBLE HANDHOLE, OR CONTROLLER
(Symbol)	(Symbol)	P GROUND ROD AT POST OR MAST ARM POLE
(Symbol)	(Symbol)	S GROUND ROD AT ELECTRIC SERVICE INSTALLATION
(Symbol)	(Symbol)	1 GROUND CABLE IN CONDUIT NO. 6 SOLID COPPER (GREEN)
(Symbol)	(Symbol)	24 FIBER OPTIC CABLE IN CONDUIT NO. 62.5/125 2-MM12F & SM12F
(Symbol)	(Symbol)	UPS UNINTERRUPTIBLE POWER SUPPLY (UPS)
(Symbol)	(Symbol)	P PREFORMED LOOP DETECTION

LEGEND		
OVERLAP LETTER	PERMISSIVE PHASE	PROTECTED PHASE
A	2	3
C	6	7

FILE NAME: P:\2007\ME07081_22nd.Street\Cadd\Supp3\0160012-SHT-TS03-Oakbrook-02.dgn
 USER NAME: MILLENNIA ENGINEERING

DESIGNED - TVN	REVISED -
DRAWN - TVN	REVISED -
CHECKED - RPD	REVISED -
DATE - 04/01/2010	REVISED -

**STATE OF ILLINOIS
DEPARTMENT OF TRANSPORTATION**

**22nd STREET AT SHOPS AT OAK BROOK PLACE
CABLE PLAN, PHASE DESIGNATION DIAGRAM,
AND SCHEDULE OF QUANTITIES**

SCALE: N/A SHEET NO. 209 OF 362 SHEETS STA. TO STA.

F.A.J. RTE. 1453	SECTION 55WRS	COUNTY	TOTAL SHEETS 362	SHEET NO. 209
FED. ROAD DIST. NO. 7 ILLINOIS FED. AID PROJECT			CONTRACT NO. 60D12	