

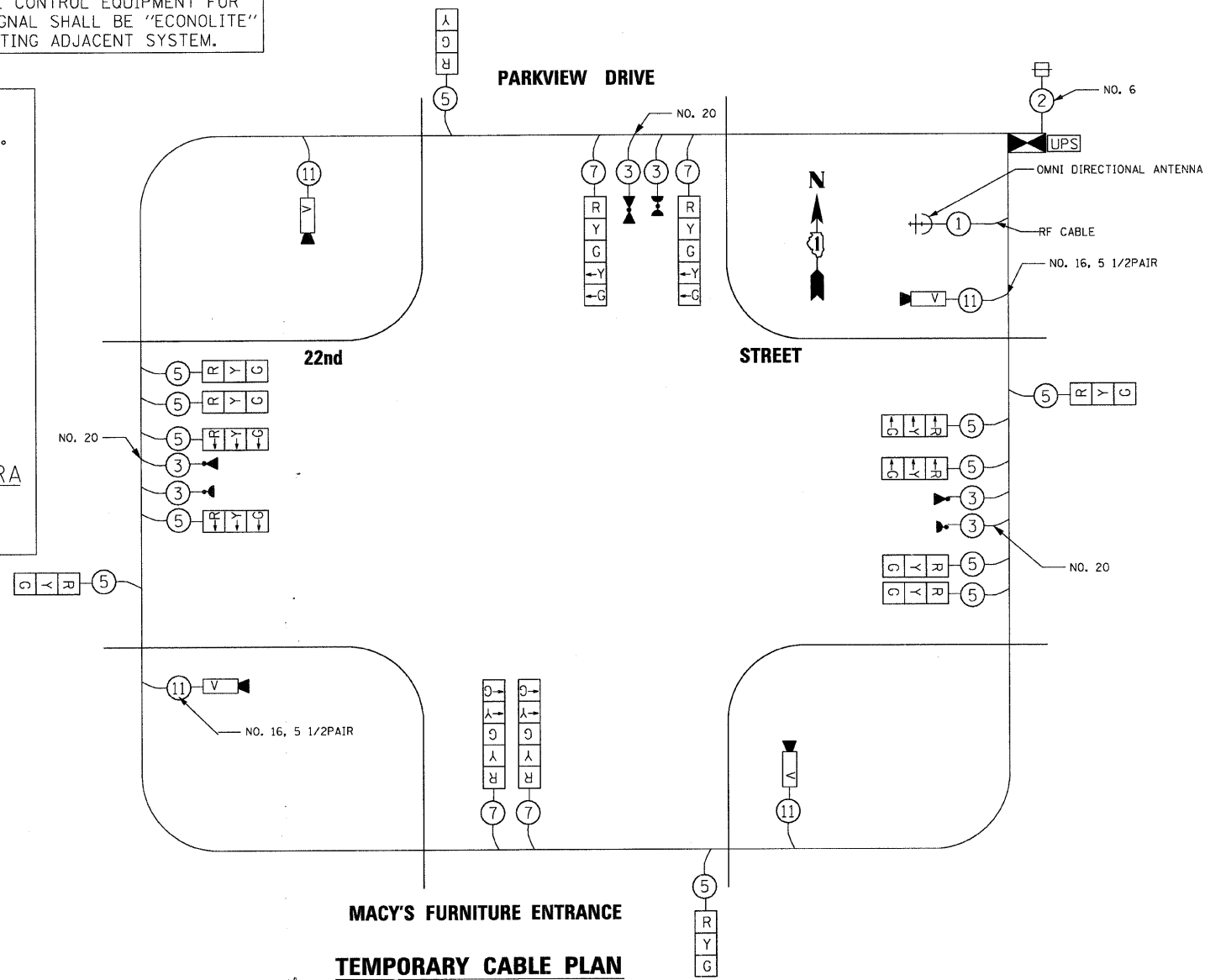
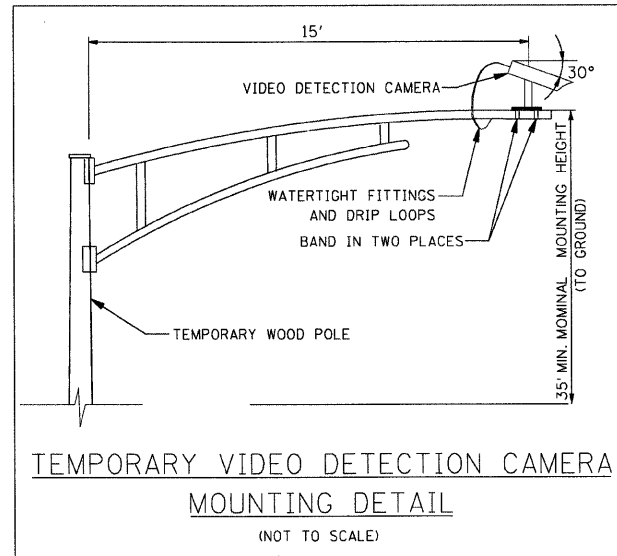
TEMPORARY CABLE DIAGRAM LEGEND

- R TEMPORARY TRAFFIC SIGNAL SECTION OR PEDESTRIAN SIGNAL SECTION 12" (300mm)
- ⊠ TEMPORARY CONTROLLER CABINET
- 2 INDICATES NUMBER OF CONDUCTORS IN CABLE. ALL CONDUCTORS TO BE NUMBER 14 AWG WIRE UNLESS OTHERWISE NOTED.
- ⊞ TEMPORARY SERVICE INSTALLATION
- ▶ EMERGENCY VEHICLE LIGHT DETECTOR
- ◀ CONFIRMATION BEACON
- PEDESTRIAN PUSHBUTTON DETECTOR
- VEHICLE DETECTOR, INDUCTION LOOP
- V VIDEO VEHICLE DETECTION CAMERA
- C CLOSED CIRCUIT TV
- T TELEPHONE CONNECTION
- ⊕ TEMPORARY RADIO INTERCONNECT
- UPS UNINTERRUPTIBLE POWER SUPPLY

NOTES

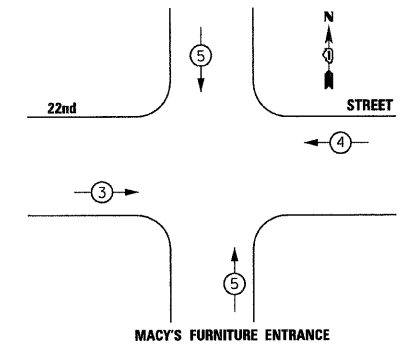
1. ONLY AN APPROVED IDOT ELECTRICAL SUBCONTRACTOR WILL BE PERMITTED TO INSTALL AND ADJUST VIDEO VEHICLE DETECTION SYSTEM AS REQUIRED BY STAGE/PHASE CHANGES.
2. FOR TEMPORARY TRAFFIC SIGNAL CONTROLLER PLATFORM DETAIL. SEE SHEET NO. 227

THE TRAFFIC SIGNAL CONTROL EQUIPMENT FOR THIS TEMPORARY SIGNAL SHALL BE "ECONOLITE" TO MATCH THE EXISTING ADJACENT SYSTEM.



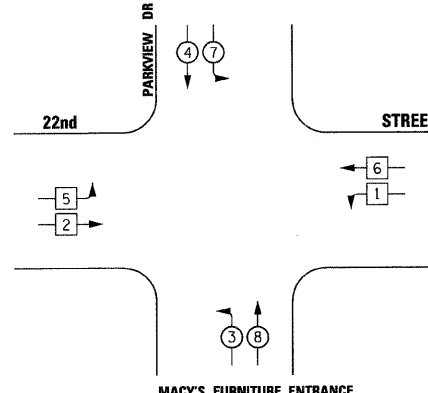
**MACY'S FURNITURE ENTRANCE
TEMPORARY CABLE PLAN**

EMERGENCY VEHICLE PREEMPTION SEQUENCE



PROPOSED EMERGENCY VEHICLE PREEMPTORS		
EMERGENCY VEHICLE PREEMPTOR	3	4
MOVEMENT	→	←

TEMPORARY CONTROLLER SEQUENCE



**MACY'S FURNITURE ENTRANCE
PHASE DESIGNATION DIAGRAM**

LEGEND

- ◀ SINGLE ENTRY PHASE
- ◀ DUAL ENTRY PHASE
- ◊ OVERLAP
- ◀ PEDESTRIAN PHASE
- NUMBER REFERS TO ASSOCIATED PHASE

I.D.O.T TRAFFIC SIGNAL INSTALLATION ELECTRICAL SERVICE REQUIREMENTS					TOTAL WATTAGE
TYPE	NO. OF LAMPS	WATTAGE INCAND.	WATTAGE L.E.D.	OPERATION	
SIGNAL (RED)	16	135	17	0.50	136
(YELLOW)	16	135	25	0.25	100
(GREEN)	16	135	15	0.25	60
ARROW	8	135	12	0.10	9,6
PED. SIGNAL		90	25	1.00	
CONTROLLER	1	100	100	1.00	100
ILLUM. SIGN		84		0.05	
VIDEO VEH. SENSOR	4	15	15	1.00	60
FLASHER				0.50	
TOTAL					465.6

ILLINOIS DEPARTMENT OF TRANSPORTATION
DIVISION OF HIGHWAY/DISTRICT 1
201 CENTER CT/SCHAUMBURG, IL 60196-1096

ENERGY SUPPLY - CONTACT: DEB RANKIN
PHONE: 630-691-4379
COMPANY: COMMONWEALTH EDISON

DESIGNED - TVN	REVISED -
DRAWN - TVN	REVISED -
CHECKED - RPD	REVISED -
DATE - 7/24/2009	REVISED -

**STATE OF ILLINOIS
DEPARTMENT OF TRANSPORTATION**

**22nd STREET AT PARKVIEW DRIVE
TEMPORARY TRAFFIC SIGNAL CABLE PLAN, AND
PHASE DESIGNATION DIAGRAM**

SCALE: N/A SHEET NO. 212 OF 362 SHEETS STA. TO STA.

F.A.U. RTE. 1453	SECTION 55WRS	COUNTY DUPAGE	TOTAL SHEETS 362	SHEET NO. 212
FED. ROAD DIST. NO. 7 ILLINOIS			CONTRACT NO. 60D12	

TTS43

FILE NAME = P:\2007\me07081_22nd.street\cadd\shs\DI60D12-SHT-TTS04-Parkview-03.dgn
 USER NAME = Millennium Engineering
 pr\2007\me07081_22nd.street\cadd\shs\DI60D12-SHT-TTS04-Parkview-03.dgn