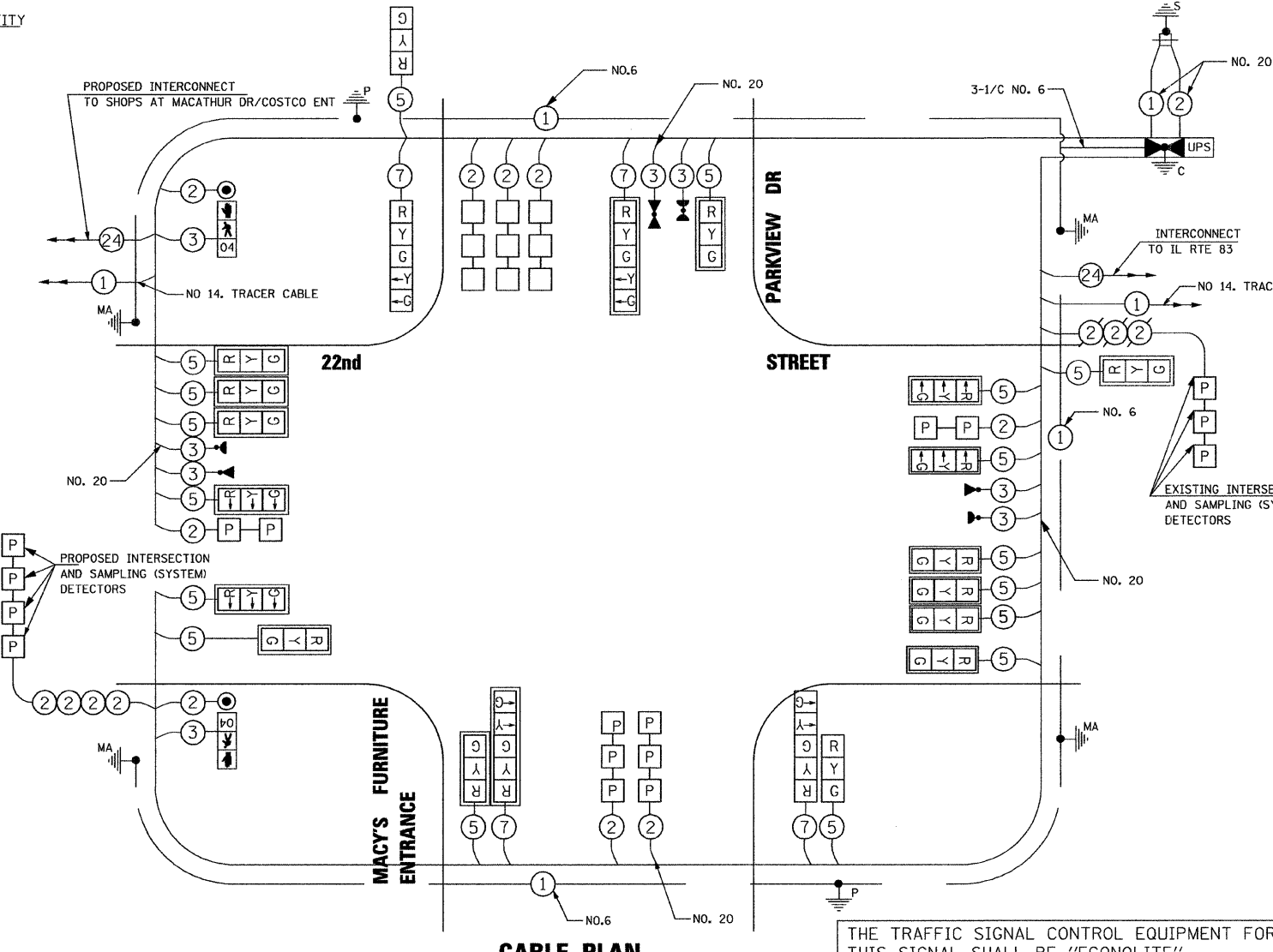


SCHEDULE OF QUANTITIES

ITEM	UNIT	QUANTITY
CONDUIT IN TRENCH, 2" DIA., GALVANIZED STEEL	FOOT	64
CONDUIT IN TRENCH, 2 1/2" DIA., GALVANIZED STEEL	FOOT	50
CONDUIT IN TRENCH, 4" DIA., GALVANIZED STEEL	FOOT	57
CONDUIT IN TRENCH, 5" DIA., GALVANIZED STEEL	FOOT	10
CONDUIT PUSHED, 2" DIA., GALVANIZED STEEL	FOOT	149
CONDUIT PUSHED, 4" DIA., GALVANIZED STEEL	FOOT	132
CONDUIT PUSHED, 5" DIA., GALVANIZED STEEL	FOOT	135
HANDHOLE	EACH	5
HEAVY-DUTY HANDHOLE	EACH	4
TRENCH AND BACKFILL FOR ELECTRICAL WORK	FOOT	181
FULL-ACTUATED CONTROLLER AND TYPE IV CABINET, SPECIAL	EACH	1
TRANSCIVER - FIBER OPTIC	EACH	1
ELECTRIC CABLE IN CONDUIT, SIGNAL, NO. 14 2C	FOOT	444
ELECTRIC CABLE IN CONDUIT, SIGNAL, NO. 14 3C	FOOT	1108
ELECTRIC CABLE IN CONDUIT, SIGNAL, NO. 14 5C	FOOT	3282
ELECTRIC CABLE IN CONDUIT, SIGNAL, NO. 14 7C	FOOT	780
ELECTRIC CABLE IN CONDUIT, LEAD-IN, NO. 14 1 PAIR	FOOT	4790
ELECTRIC CABLE IN CONDUIT, SERVICE, NO. 6 2 C	FOOT	31
TRAFFIC SIGNAL POST, GALVANIZED STEEL 16 FT.	EACH	2
STEEL MAST ARM ASSEMBLY AND POLE, 50 FT.	EACH	1
STEEL MAST ARM ASSEMBLY AND POLE, 66 FT.	EACH	1
STEEL MAST ARM ASSEMBLY AND POLE WITH DUAL MAST ARMS, 48 FT. AND 28 FT.	EACH	1
STEEL MAST ARM ASSEMBLY AND POLE WITH DUAL MAST ARMS, 60 FT. AND 28 FT.	EACH	1
CONCRETE FOUNDATION, TYPE A	FOOT	8
CONCRETE FOUNDATION, TYPE C	FOOT	4
CONCRETE FOUNDATION, TYPE E 36-INCH DIAMETER	FOOT	15
CONCRETE FOUNDATION, TYPE E 42-INCH DIAMETER	FOOT	45
DRILL EXISTING HANDHOLE	EACH	4
SIGNAL HEAD, LED, 1-FACE, 3-SECTION, MAST-ARM MOUNTED	EACH	15
SIGNAL HEAD, LED, 1-FACE, 5-SECTION, BRACKET MOUNTED	EACH	2
SIGNAL HEAD, LED, 1-FACE, 5-SECTION, MAST-ARM MOUNTED	EACH	1
SIGNAL HEAD, LED, 2-FACE, 1-3 SECTION, 1-5 SECTION, BRACKET MOUNTED	EACH	1
PEDESTRIAN SIGNAL HEAD, LED, 1-FACE, BRACKET MOUNTED	EACH	2
TRAFFIC SIGNAL BACKPLATE, LOUVERED, ALUMINUM	EACH	16
INDUCTIVE LOOP DETECTOR	EACH	10
DETECTOR LOOP, TYPE 1	FOOT	305
LIGHT DETECTOR	EACH	3
LIGHT DETECTOR AMPLIFIER	EACH	1
PEDESTRIAN PUSH-BUTTON	EACH	2
TEMPORARY TRAFFIC SIGNAL INSTALLATION	EACH	1
REMOVE EXISTING TRAFFIC SIGNAL EQUIPMENT	EACH	1
REMOVE EXISTING HANDHOLE	EACH	5
REMOVE EXISTING CONCRETE FOUNDATION	EACH	8
PREFORMED DETECTOR LOOP	FOOT	338
TEMPORARY TRAFFIC SIGNAL TIMING	EACH	1
SERVICE INSTALLATION - POLE MOUNTED	EACH	1
ELECTRIC CABLE IN CONDUIT, GROUNDING, NO. 6 1C	FOOT	546
ELECTRIC CABLE IN CONDUIT NO. 20 3/C, TWISTED, SHIELDED	FOOT	495
UNINTERRUPTIBLE POWER SUPPLY	EACH	1
TEMPORARY TRAFFIC SIGNAL INTERCONNECT	EACH	1

CABLE PLAN LEGEND

EXISTING	PROPOSED	DESCRIPTION
		8" (200mm) TRAFFIC SIGNAL SECTION
		12" (300mm) TRAFFIC SIGNAL SECTION
		12" (300mm) PEDESTRIAN SIGNAL SECTION
		12" (300mm) PEDESTRIAN SIGNAL SECTION WITH COUNTDOWN TIMER
		CONTROLLER CABINET
		SERVICE INSTALLATION
		VEHICLE DETECTOR, INDUCTION LOOP
		MAGNETIC DETECTOR
		EMERGENCY VEHICLE LIGHT DETECTOR
		CONFIRMATION BEACON
		PUSHBUTTON DETECTOR
		DENOTES NUMBER OF CONDUCTORS. ALL CABLE NO. 14 EXCEPT AS INDICATED. ALL LOOP DETECTOR CABLE TO BE SHIELDED.
		SIGNAL FACE WITH BACKPLATE "P" INDICATES PROGRAMMED HEAD.
		"E" RAILROAD CONTROL CABINET
		"E" ILLUMINATED SIGN, FIBER OPTIC "NO LEFT TURN"
		"E" ILLUMINATED SIGN, FIBER OPTIC "NO RIGHT TURN"
		H/C GROUND ROD AT HANDHOLE, DOUBLE HANDHOLE, OR CONTROLLER
		P GROUND ROD AT POST OR MAST ARM POLE
		S GROUND ROD AT ELECTRIC SERVICE INSTALLATION
		1 GROUND CABLE IN CONDUIT NO. 6 SOLID COPPER (GREEN)
		24 FIBER OPTIC CABLE IN CONDUIT NO. 62.5/125 2-MM12F & SM12F
		UPS UNINTERRUPTIBLE POWER SUPPLY (UPS)
		P PREFORMED LOOP DETECTION

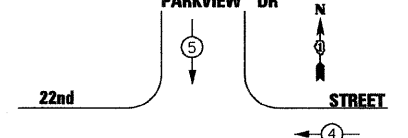


CABLE PLAN

THE TRAFFIC SIGNAL CONTROL EQUIPMENT FOR THIS SIGNAL SHALL BE "ECONOLITE" TO MATCH THE EXISTING ADJACENT SYSTEM.

NOTE: ALL LOOP DETECTION SHOWN ON THIS PLAN WILL BE "PREFORMED" DETECTION LOOPS.

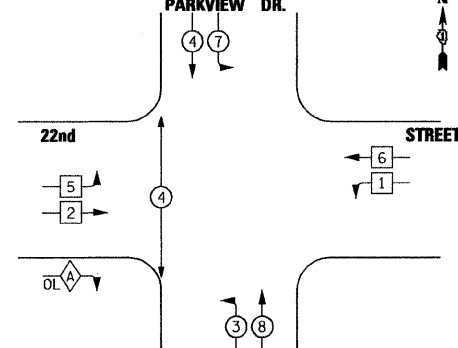
EMERGENCY VEHICLE PREEMPTION SEQUENCE



PROPOSED EMERGENCY VEHICLE PREEMPTORS

EMERGENCY VEHICLE PREEMPTOR	3	4	5
MOVEMENT	→	←	↑ ↓

PROPOSED CONTROLLER SEQUENCE



MACY'S FURNITURE ENTRANCE PHASE DESIGNATION DIAGRAM

TRAFFIC SIGNAL INSTALLATION ELECTRICAL SERVICE REQUIREMENTS

TYPE	NO. OF LAMPS	WATTAGE INCAND.	L.E.D.	OPERATION	TOTAL WATTAGE
SIGNAL (RED)	17	135	17	0.50	178.5
(YELLOW)	17	135	25	0.25	131.3
(GREEN)	17	135	15	0.25	78.8
ARROW	12	135	12	0.10	14.4
PED. SIGNAL		90	25	1.00	50
CONTROLLER	1	100	100	1.00	100
ILLUM. SIGN		84		0.05	
TOTAL					552.9

ILLINOIS DEPARTMENT OF TRANSPORTATION
 DIVISION OF HIGHWAY/DISTRICT 1
 201 CENTER CT/SCHAUMBURG, IL 60196-1096
 ENERGY SUPPLY - CONTACT: DEB RANKIN
 PHONE: 630-691-4379
 COMPANY: COMMONWEALTH EDISON

FOUNDATION (DEPTH)	(FEET) (m)	CABLE SLACK	(FEET) (m)	VERTICAL	(FEET) (m)
TYPE A - POST	4, (1.2)	HANDHOLE	6.5, (2.0)	ALL FOUNDATION	1.0, (2.0)
D - CONTROLLER	4, (1.2)	DOUBLE HANDHOLE	13, (4.0)	MAST ARM (L) POLE	20'+L-2 = (6m+L-0.6m)=
E - M. ARM POLE	()	SIGNAL POST	2, (1.0)	BRACKET MOUNTED	13, (4.0)
24" (600mm)	10, (3.0)	CONTROLLER CAB.	1, (0.5)	PED. PUSHBUTTON	4, (1.2)
30" (600mm)	15, (4.5)	FIBER OPTIC	13, (4.0)	ELECTRIC SERVICE	13.5, (4.1)
36"	15, (4.5)	ELECTRIC SERVICE	1, (0.5)	SERVICE TO GROUND	13, (4.1)
42"	15, (4.5)	GROUND CABLE	1, (0.5)	POST MOUNTED	6, (1.8)

STATE OF ILLINOIS DEPARTMENT OF TRANSPORTATION

DESIGNED - TVN	REVISED -
DRAWN - TVN	REVISED -
CHECKED - RPD	REVISED -
DATE - 04/01/2010	REVISED -

22nd STREET AT PARKVIEW DRIVE CABLE PLAN, PHASE DESIGNATION DIAGRAM, AND SCHEDULE OF QUANTITIES

SCALE: N/A SHEET NO. 214 OF 362 SHEETS STA. TO STA.

F.A.J. RTE. 1453	SECTION 55WRS	COUNTY DUPAGE	TOTAL SHEETS 362	SHEET NO. 214
CONTRACT NO. 60D12				TS42

FILE NAME: P:\2007\ME07081_22nd.Street\Cadd\Supp3\0160D12-SHT-TS04-Parkview-02.dgn
 USER: KJL
 PLOT DATE: 04/01/2010 10:58:00 AM
 PLOT SCALE: 1/8"=1'-0"

MILLENNIA ENGINEERING
 200 22ND Street, Suite 216, Lombard, IL 60148
 630.785.9119 voice, 630.939.2566 fax
 www.millenniaeng.com