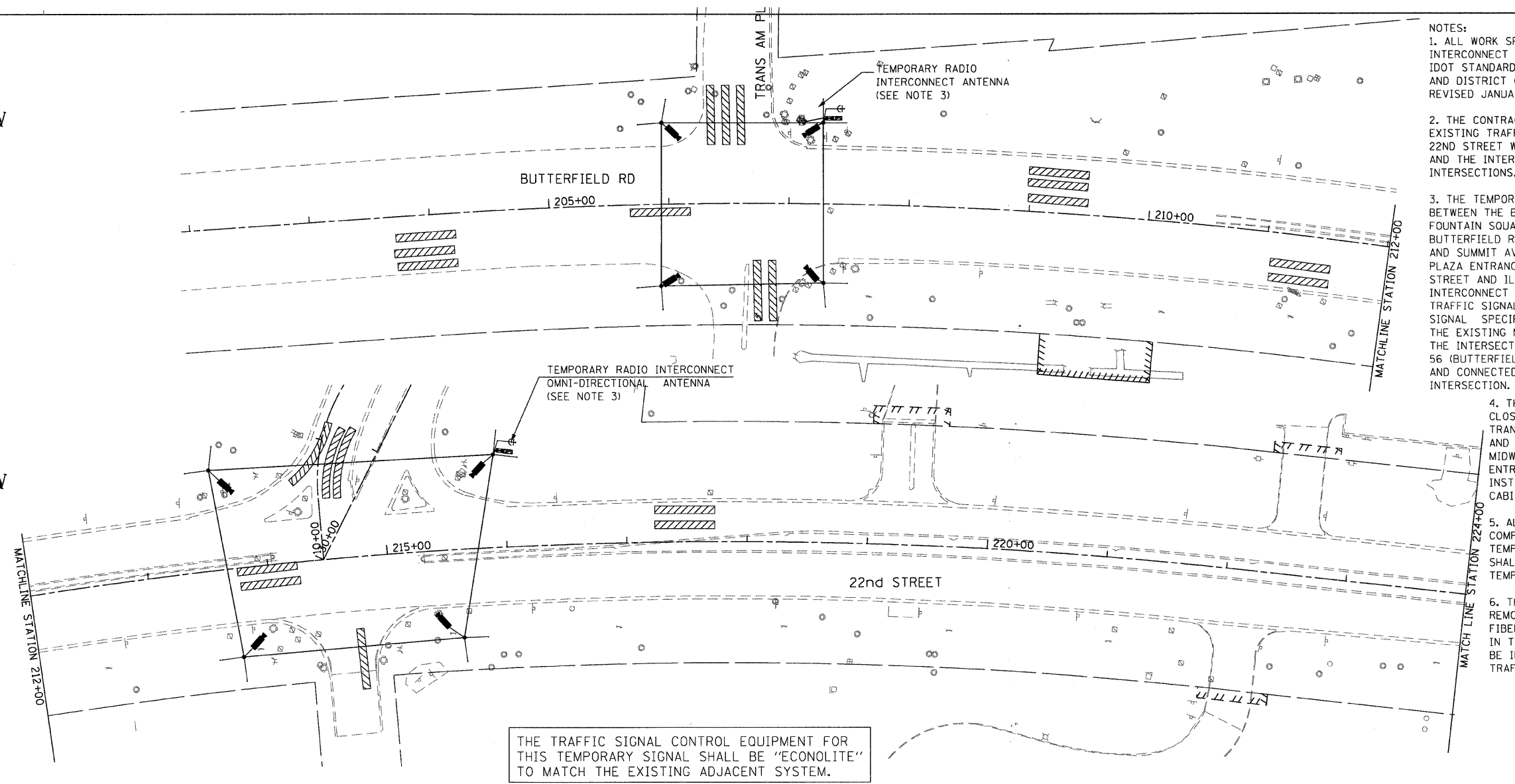
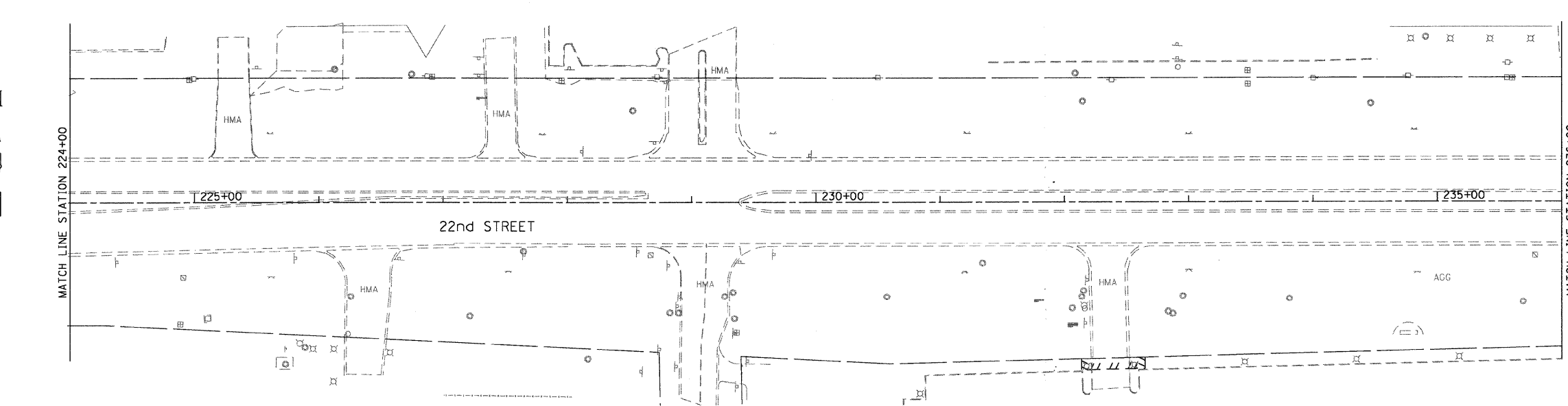


- NOTES:
1. ALL WORK SPECIFIED IN THE TEMPORARY TRAFFIC SIGNAL INTERCONNECT PLAN SHALL BE COMPLETED ACCORDING TO IDOT STANDARD SPECIFICATIONS ADOPTED JANUARY 1, 2007, AND DISTRICT ONE TRAFFIC SIGNAL SPECIFICATIONS REVISED JANUARY 1, 2007.
 2. THE CONTRACT SHALL BE RESPONSIBLE FOR MAINTAINING THE EXISTING TRAFFIC SIGNAL INSTALLATION AT BUTTERFIELD RD AND 22ND STREET WITH TRANS AM PLAZA ENTRANCE AND MIDWEST RD AND THE INTERCONNECT SYSTEM BETWEEN THE TWO INTERSECTIONS.
 3. THE TEMPORARY TRAFFIC SIGNAL INTERCONNECT SYSTEM BETWEEN THE BUTTERFIELD RD INTERSECTIONS WITH FOUNTAIN SQUARE DR., TRANS AM PLAZA ENTRANCE, BUTTERFIELD RD AND 22ND STREET, IL RTE (BUTTERFIELD RD AND SUMMIT AVE, MIDWEST RD, 22ND STREET AND OAKBROOK PLAZA ENTRANCE, 22ND STREET AND PARKVIEW DR, 22ND STREET AND IL ROUTE 83 INTERSECTION SHALL BE WIRELESS INTERCONNECT ACCORDING TO THE TEMPORARY TRAFFIC SIGNAL SPECIFICATION OF THE DISTRICT ONE TRAFFIC SIGNAL SPECIFICATIONS. THE ANTENNA SHALL BE PLACED ON THE EXISTING MAST ARM ASSEMBLY AND POLE AS INDICATED AT THE INTERSECTIONS OF FOUNTAIN SQUARE DR, ILLINOIS ROUTE 56 (BUTTERFIELD RD)/SUMMIT AVE. AND ILLINOIS ROUTE 83 AND CONNECTED TO THE EXISTING CONTROLLER AT EACH INTERSECTION.
 4. THE ANTENNA SHALL BE PLACED ON WOOD POLE CLOSEST TO THE TEMPORARY CONTROLLER AT TRANS AM PLAZA DR AND 22ND STREET, BUTTERFIELD RD AND 22ND STREET, BUTTERFIELD RD AND SUMMIT AVE, MIDWEST ROAD AND 22ND STREET, OAKBROOK PLAZA ENTRANCE INTERSECTIONS. ANTENNA RF CABLE SHALL BE INSTALLED BETWEEN THE ANTENNA AND THE CONTROLLER CABINET.
 5. ALL NECESSARY CABLES, ANTENNA, AND OTHER COMPONENTS REQUIRED FOR FULLY FUNCTIONAL TEMPORARY RADIO INTERCONNECT SYSTEM SHALL BE INCLUDED AND PAID FOR AS THE ITEM TEMPORARY TRAFFIC SIGNAL INTERCONNECT.
 6. THE ANTENNA AND ALL CABLES SHALL BE REMOVED UPON COMPLETION OF THE PROPOSED FIBER OPTIC INTERCONNECT SYSTEM. ANY HOLES IN THE MAST ARMS SHALL BE PLUGGED. THIS SHALL BE INCLUDED IN THE PAY ITEM OF TEMPORARY TRAFFIC SIGNAL INTERCONNECT.



THE TRAFFIC SIGNAL CONTROL EQUIPMENT FOR THIS TEMPORARY SIGNAL SHALL BE "ECONOLITE" TO MATCH THE EXISTING ADJACENT SYSTEM.



- LEGEND
- EXISTING CONTROLLER
 - EXISTING MASTER CONTROLLER
 - EXISTING DOUBLE HANDHOLE
 - EXISTING HANDHOLE
 - HEAVY DUTY HANDHOLE
 - G.S. CONDUIT IN TRENCH OR PUSHED
 - INTERSECTION AND SAMPLING (SYSTEM) DETECTOR LOOP
 - TELEPHONE
 - TEMPORARY RADIO INTERCONNECT ANTENNA
 - TEMPORARY WOOD POLE

FILE NAME: I:\2007\me07081\22nd-street\cadd\shs\0160D12-SHT-TINTIC01.dgn
 PLOT SCALE: 50.0000 1"=50'
 USER NAME: Millennium Engineering

MILLENNIA ENGINEERING
 200 22ND STREET, SUITE 216, LOMBARD, IL 60148
 630.705.8110 voice, 630.839.2566 fax
 www.milleniaeng.com

DESIGNED - TVN	REVISED -
DRAWN - TVN	REVISED -
CHECKED - RPD	REVISED -
DATE - 7/24/2009	REVISED -

**STATE OF ILLINOIS
 DEPARTMENT OF TRANSPORTATION**

**22nd STREET
 TEMPORARY SYSTEM INTERCONNECT**

SCALE: 1"=50' SHEET NO#TIC00F 362 SHEETS STA. 203+00 TO STA. 236+00

F.A.U. RTE.	SECTION	COUNTY	TOTAL SHEETS	SHEET NO.
1453	55WRS	DUPAGE	362	215
FED. ROAD DIST. NO. 7 ILLINOIS FED. AID PROJECT			CONTRACT NO. 60D12	

TIC-01

pt:\2007\me07081\22nd-street\cadd\shs\0160D12-SHT-TINTIC01.dgn