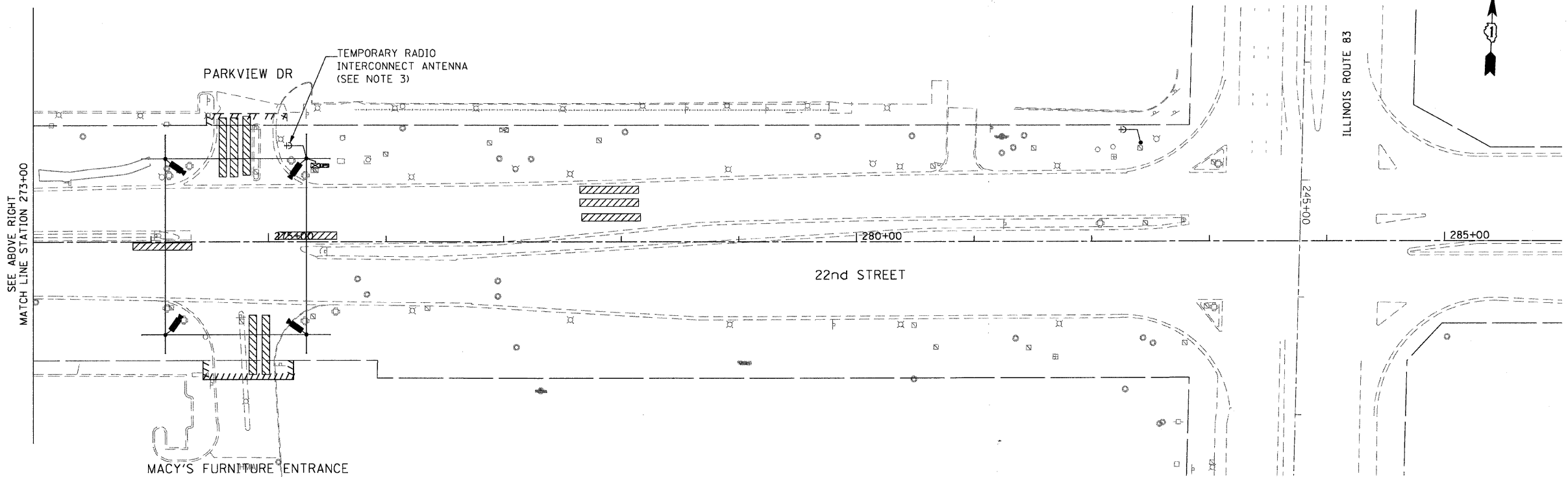


- LEGEND**
- EXISTING CONTROLLER
  - EXISTING MASTER CONTROLLER
  - EXISTING DOUBLE HANDHOLE
  - EXISTING HANDHOLE
  - HEAVY DUTY HANDHOLE
  - G.S. CONDUIT IN TRENCH OR PUSHED
  - INTERSECTION AND SAMPLING (SYSTEM) DETECTOR LOOP
  - TELEPHONE
  - TEMPORARY RADIO INTERCONNECT ANTENNA
  - TEMPORARY WOOD POLE

THE TRAFFIC SIGNAL CONTROL EQUIPMENT FOR THIS TEMPORARY SIGNAL SHALL BE "ECONOLITE" TO MATCH THE EXISTING ADJACENT SYSTEM.



FILE NAME : S:\2007\me\7081.22nd.st\east\cadd\shs\0160012-SHT-TINTC03.dgn  
 PLOT SCALE : 5/8"=1'-0"  
 USER NAME : Millennium Engineering



200 22nd Street, Suite 216, Lombard, IL 60148  
 630.765.0110 voice, 630.839.2566 fax  
 www.millenniaeng.com  
**MILLENNIA ENGINEERING**

DESIGNED - TVN	REVISED -
DRAWN - TVN	REVISED -
CHECKED - RPD	REVISED -
DATE - 7/24/2009	REVISED -

**STATE OF ILLINOIS**  
**DEPARTMENT OF TRANSPORTATION**

<b>22nd STREET</b>		
<b>TEMPORARY SYSTEM INTERCONNECT</b>		
SCALE: 1"=50'	SHEET NO#TIC00F 362 SHEETS	STA. 261+00 TO STA. 285+00

F.A.U. RTE.	SECTION	COUNTY	TOTAL SHEETS	SHEET NO.
1453	55WRS	DUPAGE	362	217
FED. ROAD DIST. NO. 7 ILLINOIS FED. AID PROJECT				
CONTRACT NO. 60D12				

pc:\2007\me\7081.22nd.st\east\cadd\shs\0160012-SHT-TINTC03.dgn