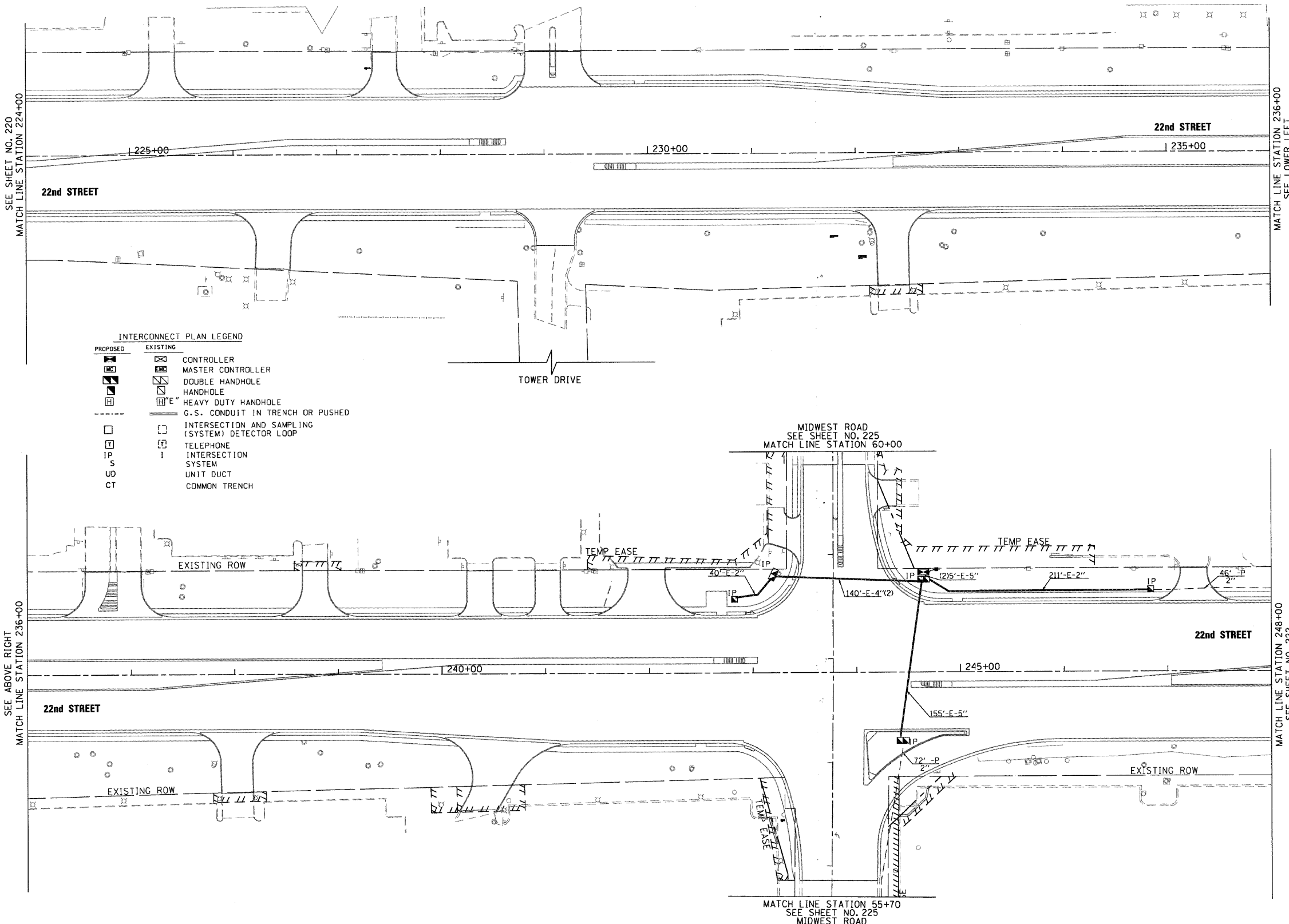
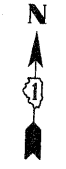


THE TRAFFIC SIGNAL CONTROL EQUIPMENT FOR THIS SYSTEM SHALL BE "ECONOLITE" TO MATCH THE EXISTING ADJACENT SYSTEM.



INTERCONNECT PLAN LEGEND

PROPOSED	EXISTING	DESCRIPTION
[Symbol]	[Symbol]	CONTROLLER
[Symbol]	[Symbol]	MASTER CONTROLLER
[Symbol]	[Symbol]	DOUBLE HANDHOLE
[Symbol]	[Symbol]	HANDHOLE
[Symbol]	[Symbol]	HEAVY DUTY HANDHOLE
[Symbol]	[Symbol]	G.S. CONDUIT IN TRENCH OR PUSHED
[Symbol]	[Symbol]	INTERSECTION AND SAMPLING (SYSTEM) DETECTOR LOOP
[Symbol]	[Symbol]	TELEPHONE
[Symbol]	[Symbol]	INTERSECTION SYSTEM
[Symbol]	[Symbol]	UNIT DUCT
[Symbol]	[Symbol]	COMMON TRENCH



FILE NAME: P:\2007\me07081\22nd.stree\cadd\Shrs\DI60D12-SHT-INTC02.dgn
 USER NAME: Millennium Engineering

MILLENNIA ENGINEERING
 200 22ND Street, Suite 216, Lombard, IL 60148
 630.705.0110 voice, 630.839.2566 fax
 www.millenniaeng.com

DESIGNED - TVN	REVISED -
DRAWN - TVN	REVISED -
CHECKED - RPD	REVISED -
DATE - 7/24/2009	REVISED -

**STATE OF ILLINOIS
 DEPARTMENT OF TRANSPORTATION**

**22nd STREET
 SYSTEM INTERCONNECT PLAN**
 SCALE: 1"=50' SHEET NO.221 OF 362 SHEETS STA. 224+00 TO STA. 248+00

F.A.U. R.F.	SECTION	COUNTY	TOTAL SHEETS	SHEET NO.
1453	55WRS	DUPAGE	362	221
				CONTRACT NO. 60D12

FED. ROAD DIST. NO. 7 ILLINOIS FED. AID PROJECT
 P:\2007\me07081\22nd.stree\cadd\Shrs\DI60D12-SHT-INTC02.dgn

IC-02