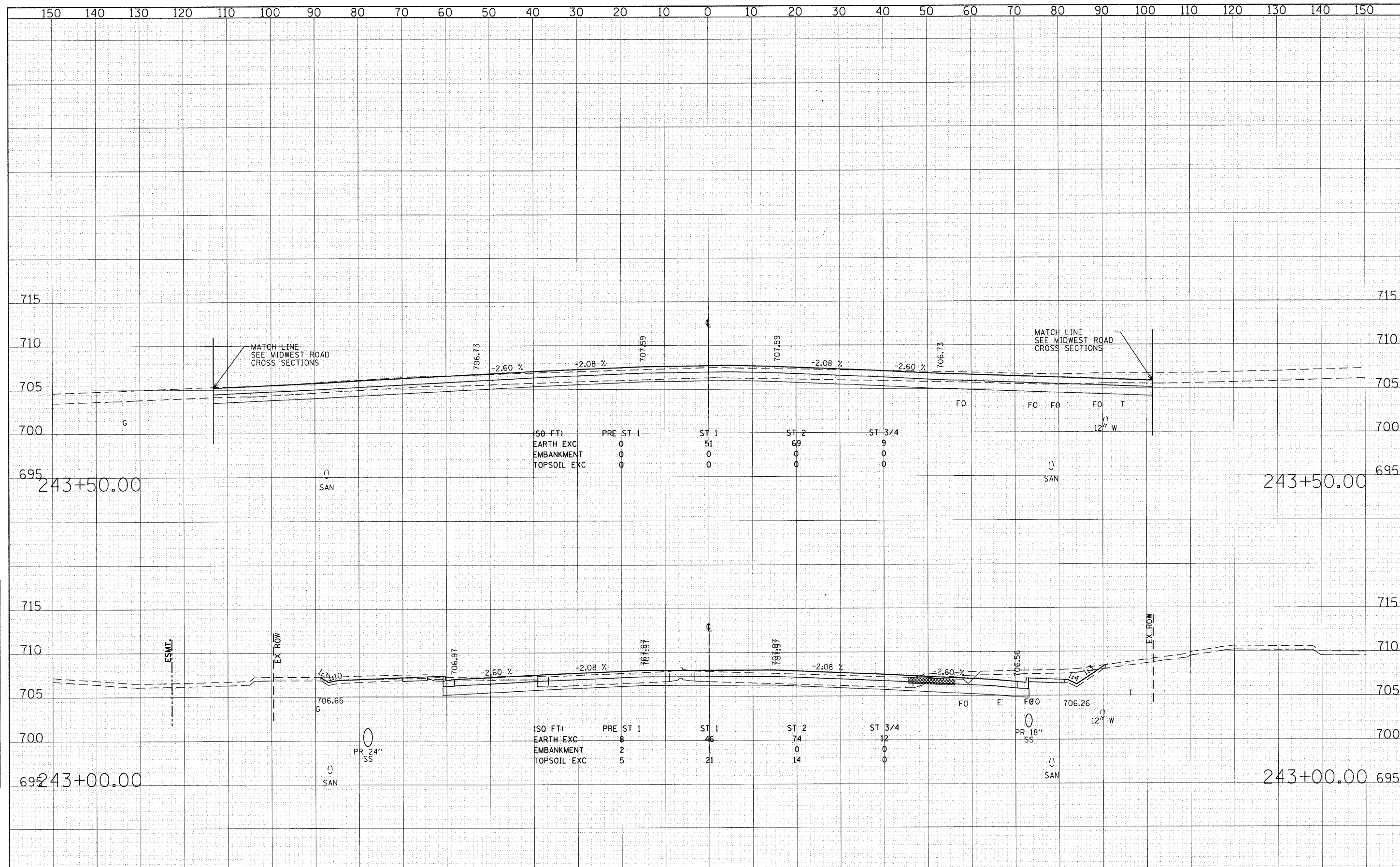


DATE	
BY	
FINAL SURVEY	SURVEYED
NOTE BOOK	PLOTTED
NO.	REVISIONS
	AREAS CHECKED

DATE	
BY	
ORIGINAL SURVEY	SURVEYED
NOTE BOOK	PLOTTED
NO.	REVISIONS
	AREAS CHECKED



FILE NAME = g:\ch07\0061\road\sheeta\DI62012-SHT-XSSH1.dgn	USER NAME = BANWIT	DESIGNED - JMG	REVISED -	STATE OF ILLINOIS DEPARTMENT OF TRANSPORTATION	CROSS SECTIONS - 22nd STREET		F.A. RTE. 1453	SECTION 55WRS	COUNTY DUPAGE	TOTAL SHEETS 362	SHEET NO. 310	
PLOT SCALE = 10.0000 / IN.	CHECKED - JRH	REVISED -			SCALE: HORIZ: 1"=10'	SHEET NO. 310 OF 362 SHEETS	STA. 243+00.00 TO STA. 243+50.00	FED. ROAD DIST. NO. 7 ILLINOIS FED. AID PROJECT				
PLOT DATE = 8/5/2009	DATE - 07/24/2009	REVISED -			CONTRACT NO. 60D12							