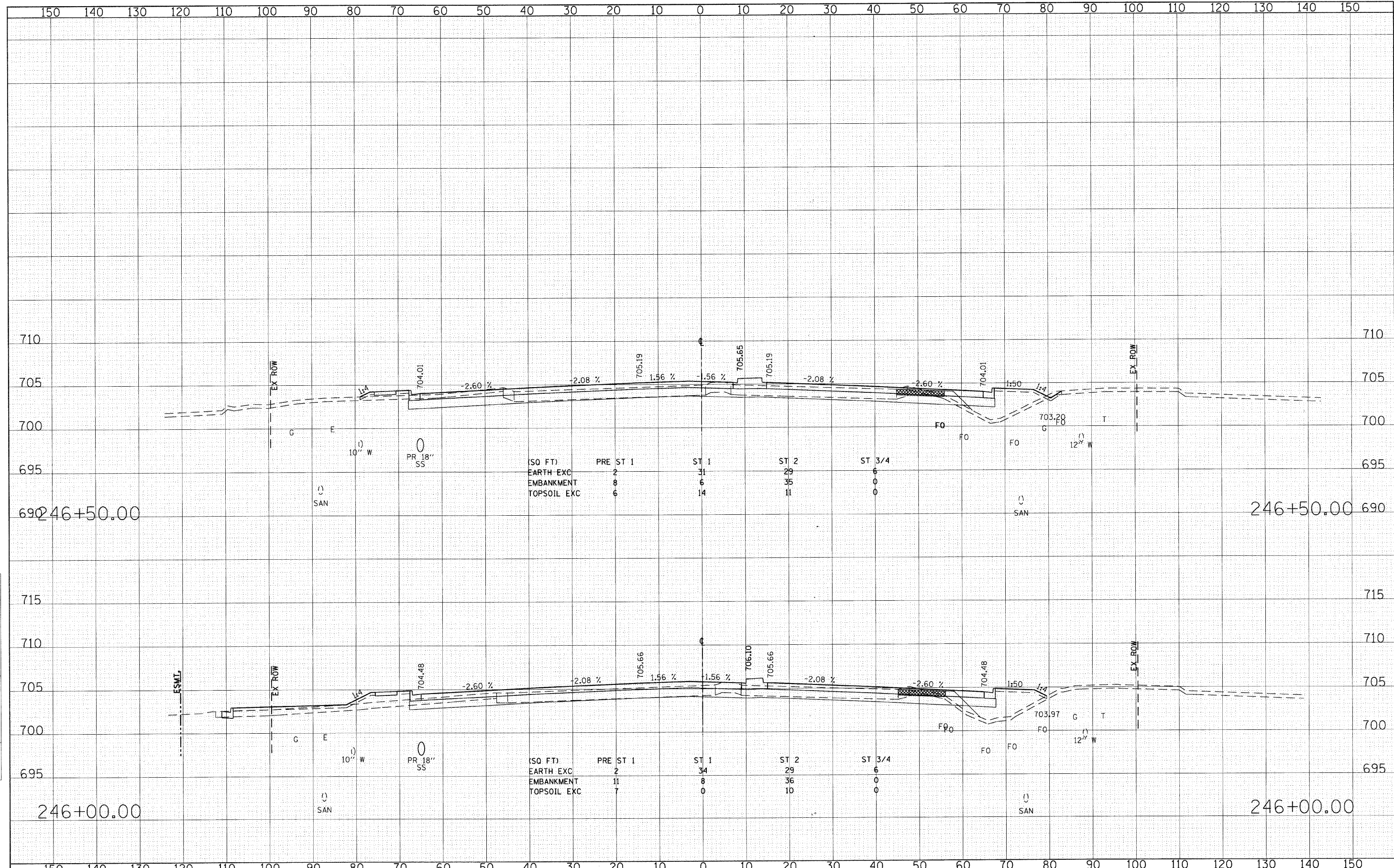


DATE	
BY	
SURVEYED	
PLOTTED	
NOTE BOOK	
AREAS	
CHECKED	
NO.	

DATE	
BY	
SURVEYED	
PLOTTED	
NOTE BOOK	
AREAS	
CHECKED	
NO.	



FILE NAME =	USER NAME = BAW:tor:t	DESIGNED - JMG	REVISED -	STATE OF ILLINOIS DEPARTMENT OF TRANSPORTATION	CROSS SECTIONS - 22nd STREET		F.A. RTE.	SECTION	COUNTY	TOTAL SHEETS	SHEET NO.
gr:\ch\87\0061\road\sheet\DI60012-SHT-XSSHT1.dgn		DRAWN - JMG	REVISED -				1453	55WRS	DuPAGE	362	313
PLOT SCALE = 10.0000 / IN.		CHECKED - JRH	REVISED -				CONTRACT NO. 60D12				
PLOT DATE = 8/5/2009		DATE - 07/24/2009	REVISED -				FED. ROAD DIST. NO. 7 ILLINOIS FED. AID PROJECT				
SCALE: HORIZ: 1"=100'		SHEET NO. 313 OF 362 SHEETS					STA. 246+00.00 TO STA. 246+50.00				