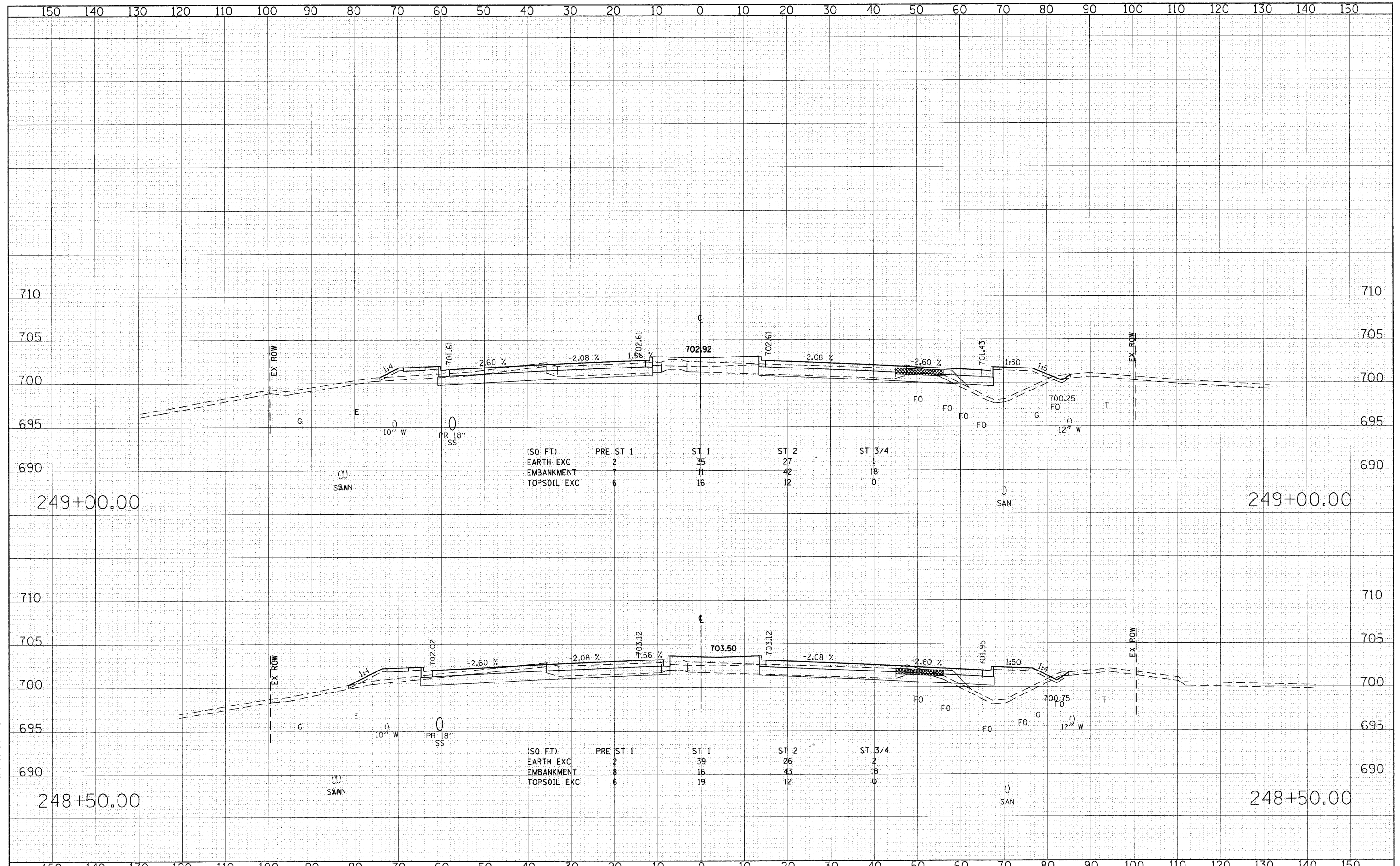


DATE	
BY	
FINAL SURVEYED	
PLOTTED	
NOTE BOOK	
AREAS CHECKED	
NO.	

DATE	
BY	
ORIGINAL SURVEYED	
PLOTTED	
NOTE BOOK	
AREAS CHECKED	
NO.	



FILE NAME =	USER NAME = BAWitort	DESIGNED - JMG	REVISED -	STATE OF ILLINOIS DEPARTMENT OF TRANSPORTATION	CROSS SECTIONS - 22nd STREET			F.A. RTE.	SECTION	COUNTY	TOTAL SHEETS	SHEET NO.
g:\ch07\0061\road\sheeta\0160012-SHT-XSSH1.dgn		DRAWN - JMG	REVISED -		1453	55WRS		362	316	CONTRACT NO. 60D12		
PLOT SCALE = 10.0000 / IN.		CHECKED - JRH	REVISED -		SCALE: HORIZ: 1"=10'			SHEET NO. 316 OF 362 SHEETS			STA. 248+50.00 TO STA. 249+00.00	
PLOT DATE = 8/5/2009		DATE - 07/24/2009	REVISED -		SCALE: VERT: 1"=5'			FED. ROAD DIST. NO. 7			ILLINOIS FED. AID PROJECT	