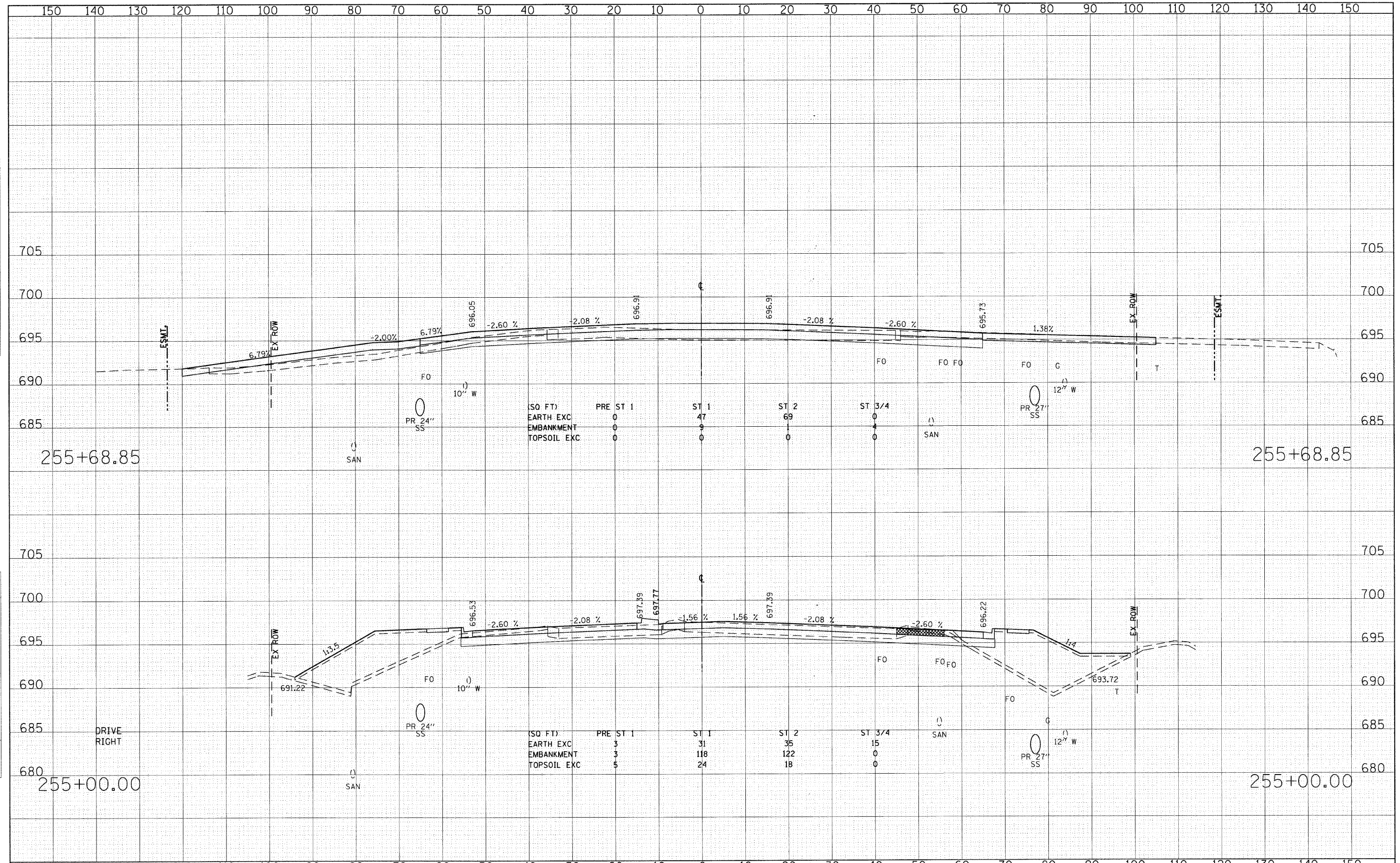


DATE	
BY	
FINAL SURVEY	
SURVEY PLOTTED	
NOTE BOOK	
AREAS CHECKED	
NO.	

DATE	
BY	
ORIGINAL SURVEY	
SURVEY PLOTTED	
NOTE BOOK	
AREAS CHECKED	
NO.	



FILE NAME = g:\ch07\0061\road\sheets\160012-SHT-XSSH11.dgn	USER NAME = BAN\jort	DESIGNED - JMG	REVISED -	STATE OF ILLINOIS DEPARTMENT OF TRANSPORTATION	CROSS SECTIONS - 22nd STREET			F.A. RTE. 1453	SECTION 55WRS	COUNTY DuPAGE	TOTAL SHEETS 362	SHEET NO. 323
PLOT SCALE = 10.0000' / IN.	CHECKED - JRH	REVISOR -	REVISOR -		SCALE: HORIZ: 1"=10'	SHEET NO. 323 OF 362 SHEETS	STA. 255+00.00 TO STA. 255+68.85	FED. ROAD DIST. NO. 7 ILLINOIS FED. AID PROJECT				
PLOT DATE = 8/5/2009	DATE - 07/24/2009	REVISOR -	REVISOR -									