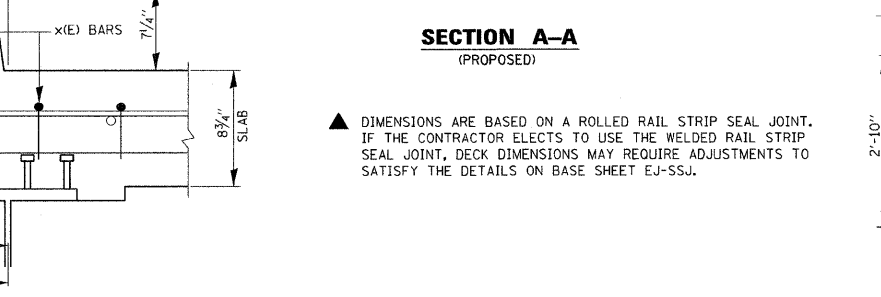
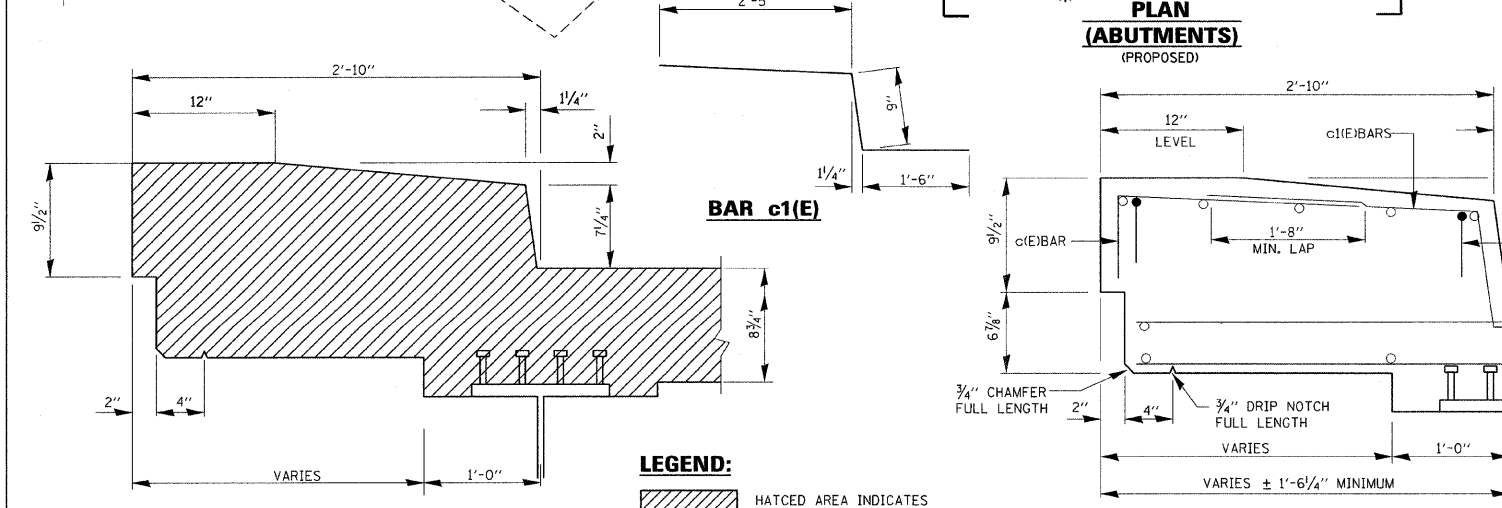
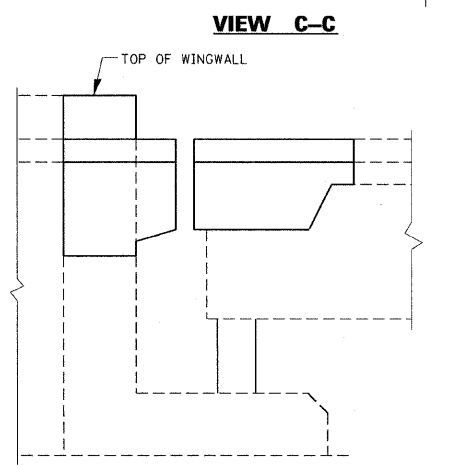
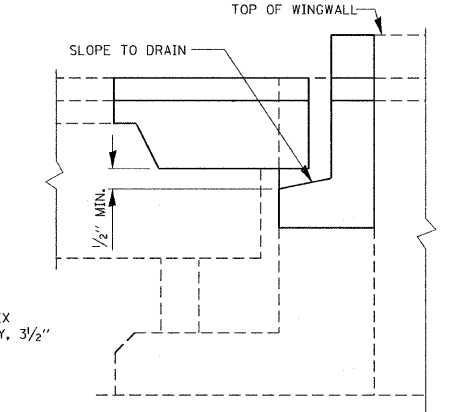


### 2 ABUTMENTS BILL OF MATERIALS

| BAR                               | NO. | SIZE | LENGTH | SHARE |
|-----------------------------------|-----|------|--------|-------|
| a(E)                              | 32  | #5   | 22'-9" |       |
| c(E)                              | 24  | #4   | 5'-3"  |       |
| c1(E)                             | 24  | #4   | 4'-8"  |       |
| h(E)                              | 16  | #5   | 23'-1" |       |
| u(E)                              | 72  | #5   | 2'-9"  |       |
| x(E)                              | 82  | #5   | 2'-6"  |       |
| REINFORCEMENT BARS (EPOXY COATED) |     |      | POUND  | 1720  |
| CONCRETE REMOVAL                  |     |      | CU.YD. | 29.9  |
| CONCRETE SUPERSTRUCTURE           |     |      | CU.YD. | 29.9  |
| BAR SPLICER                       |     |      | EACH   | 24    |



**LEGEND:**  
 HATCHED AREA INDICATES CONCRETE REMOVAL

▲ DIMENSIONS ARE BASED ON A ROLLED RAIL STRIP SEAL JOINT. IF THE CONTRACTOR ELECTS TO USE THE WELDED RAIL STRIP SEAL JOINT, DECK DIMENSIONS MAY REQUIRE ADJUSTMENTS TO SATISFY THE DETAILS ON BASE SHEET EJ-SSJ.

|  |                        |                |           |
|--|------------------------|----------------|-----------|
| FILE NAME =                                      | USER NAME = tjrjakosiv | DESIGNED - MVT | REVISED - |
| c:\pwwork\p1001\TINI\AKOSM\vd0101671\09-0171.dgn |                        | DRAWN - MVT    | REVISED - |
| PLOT SCALE = 50.0000' / IN.                      |                        | CHECKED - RB   | REVISED - |
| PLOT DATE = 3/16/2010                            |                        | DATE -         | REVISED - |

**STATE OF ILLINOIS  
DEPARTMENT OF TRANSPORTATION**

**IL 113 (RIVER STREET) OVER HORSE CREEK  
TRANSVERSE EXPANSION JOINT DETAILS  
S.N. 099-0171**

|   |                    |             |                    |             |
|---|--------------------|-------------|--------------------|-------------|
| F.A.U. RTE. 0327                            | SECTION 112 BR-1-1 | COUNTY WILL | TOTAL SHEETS 28    | SHEET NO. 6 |
| SCALE: SHEET NO. 3 OF 8 SHEETS STA. TO STA. |                    |             | CONTRACT NO. 60H86 |             |
| ILLINOIS FED. AID PROJECT                   |                    |             |                    |             |