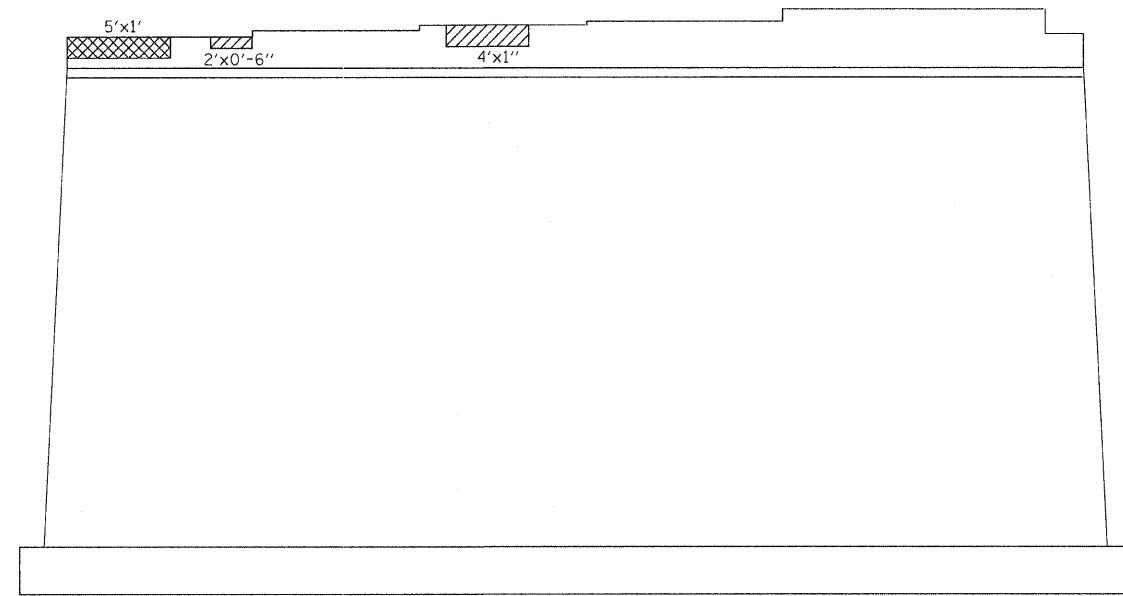
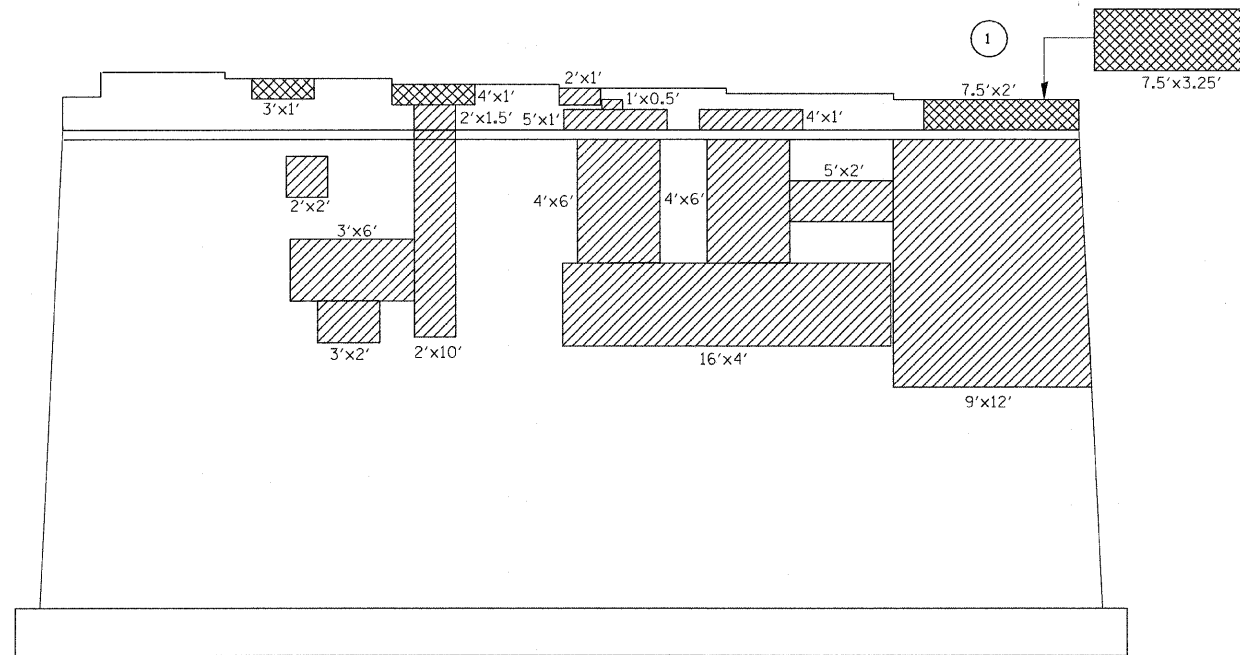


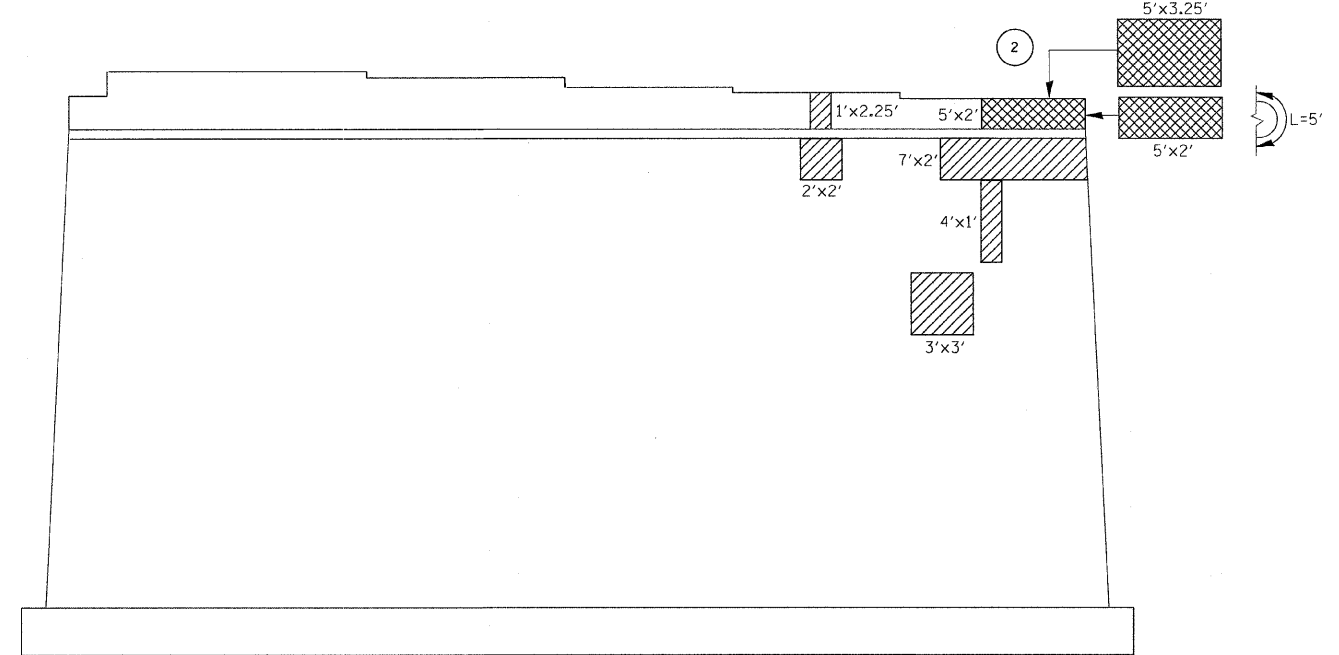
**SOUTH ELEVATION (PIER 1)**



**SOUTH ELEVATION (PIER 2)**



**NORTH ELEVATION (PIER 1)**



**NORTH ELEVATION (PIER 2)**

① INDICATES # OF BEAMS TO BE SUPPORTED DURING SUBSTRUCTURE REPAIRS. COST INCLUDED IN "TEMPORARY SHORING AND CRIBBING."

**BEAM REACTIONS**

R <sub>1</sub>	(K)	34.0
R <sub>2</sub>	(K)	35.1
Imp.	(K)	9.5
R (TOTAL)	(K)	78.6

**LEGEND:**

- STRUCTURAL REPAIR OF CONCRETE < 5"
- STRUCTURAL REPAIR OF CONCRETE > 5"

**BILL OF MATERIALS**

ITEM	UNIT	QUANTITY
STRUCTURAL REPAIR OF CONCRETE < 5"	SQ. FT.	413
STRUCTURAL REPAIR OF CONCRETE > 5"	SQ. FT.	96
TEMPORARY SHORING AND CRIBBING	EACH	3