

STATE OF ILLINOIS
DEPARTMENT OF TRANSPORTATION

BEAM REACTIONS

| | | |
|----------------|-----|------|
| R _l | (K) | 34.0 |
| R _r | (K) | 35.1 |
| Imp. | (K) | 9.5 |
| R (Total) | (K) | 78.6 |

Notes:

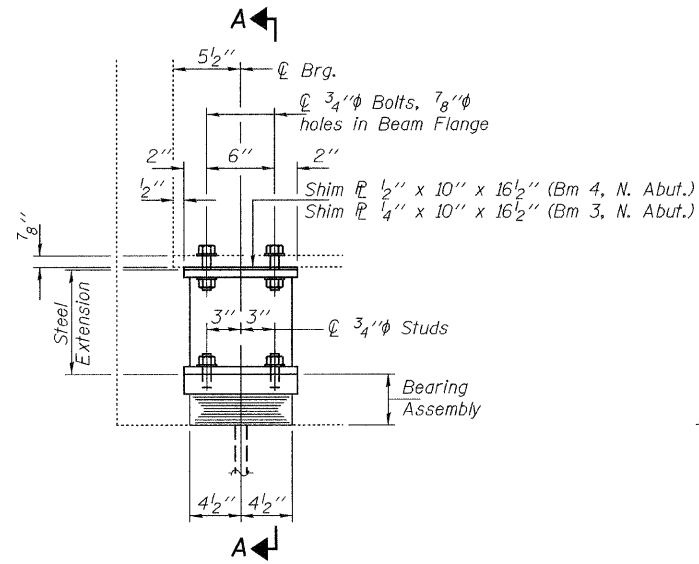
Diaphragm removal and reinstallation may be required to facilitate drilling holes. Cost included with Furnishing and Erecting Structural Steel.

New steel extensions, shim plates and connection bolts are included with Furnishing and Erecting Structural Steel. Prior to ordering any material, the Contractor shall verify in the field all bearing height and shim thickness dimensions. Min. Jack capacity = 45 Tons.

Anchor bolts shall be ASTM F1554 all-thread (or an Engineer-approved alternate material) of the grade(s) and diameter(s) specified. ASTM A307 Grade C anchor bolts may be used in lieu of ASTM F1554 Grade 36 (Fy=36ksi). The corresponding specified grade of AASHTO M314 anchor bolts may be used in lieu of ASTM F1554.

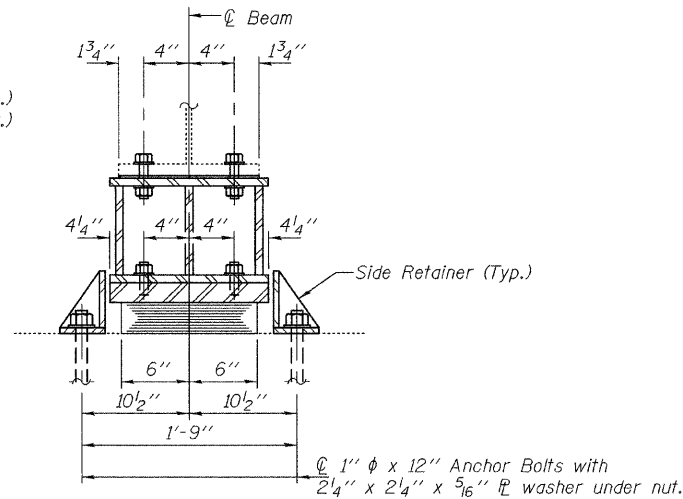
Drilled and set anchor bolts shall be installed according to Article 521.06 of the Standard Specifications.

Side retainers shall be included in the cost of Elastomeric Bearing Assembly, Type I.

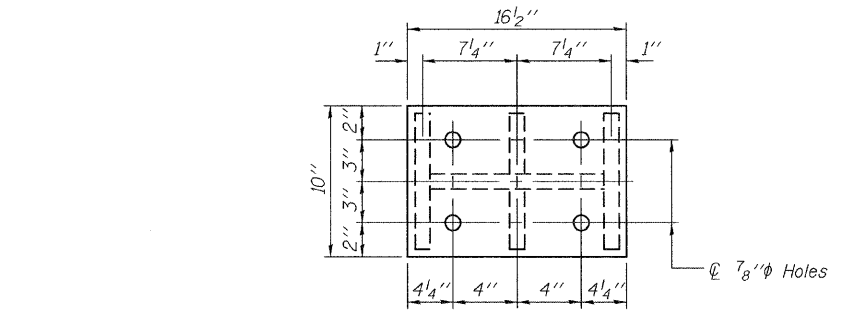


ELEVATION

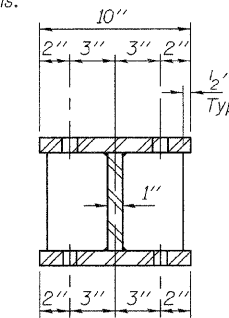
TYPE I ELASTOMERIC EXP. BRG.



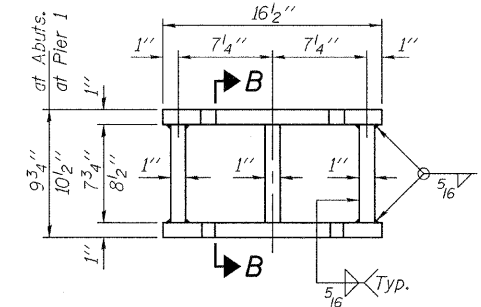
SECTION A-A



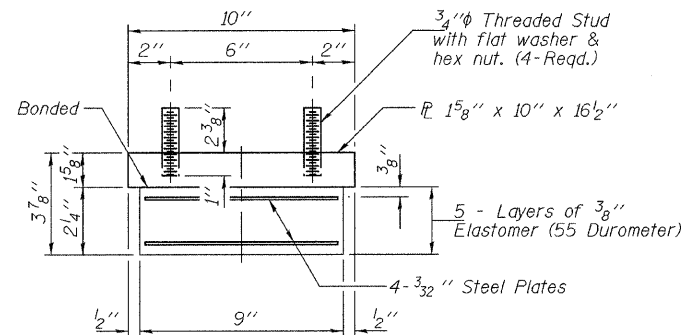
PLAN TOP AND BOTTOM PLATE



SECTION B-B

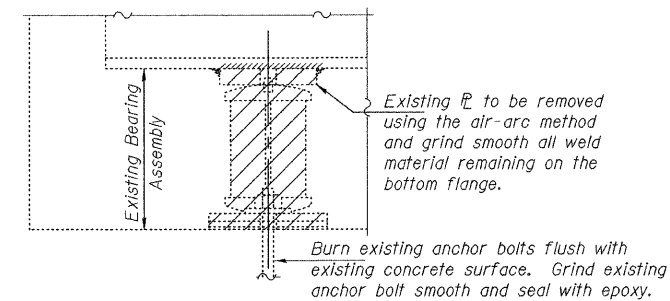


STEEL EXTENSION DETAIL



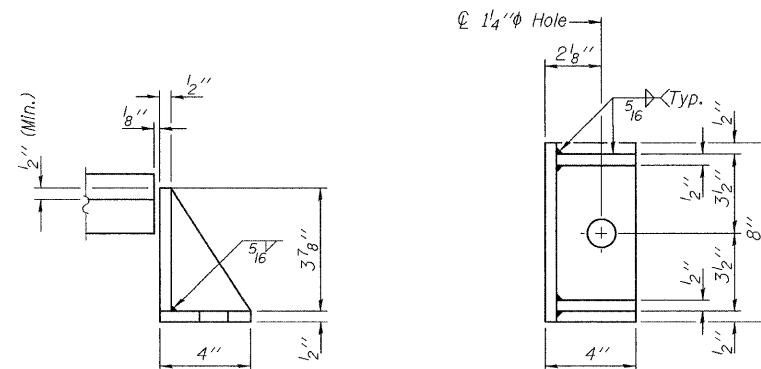
BEARING ASSEMBLY

Note:
Shim plates shall not be placed under Bearing Assembly.



EXISTING BEARING REMOVAL DETAIL

Cost included with Jack and Remove Existing Bearings.



SIDE RETAINER

Equivalent rolled angle with stiffeners will be allowed in lieu of welded plates.

BILL OF MATERIAL

| Item | Unit | Total |
|--|-------|-------|
| Elastomeric Bearing Assembly, Type I | Each | 18 |
| Jack and Remove Existing Bearings | Each | 18 |
| Furnishing and Erecting Structural Steel | Pound | 3500 |
| Anchor Bolts 1"φ | Each | 36 |

BEARING REPLACEMENT DETAILS

SN 099-0171

| | |
|----------|-----------------|
| DESIGNED | IJL |
| CHECKED | VHV |
| DRAWN | Kyle M. Steffen |
| CHECKED | IJL VHV |

MARCH 11, 2010
EXAMINED *Carl P. ...*
PASSED *Ralph E. Anderson*
ENGINEER OF STRUCTURAL SERVICES
ENGINEER OF BRIDGES AND STRUCTURES

TYI/REPS 12-03-2008

| | | | | | |
|-------------------------|---|-----------------------|----------------|--------------------|-----------------|
| SHEET NO. 3 3 SHEETS | F.A.U. RTE. 0327 | SECTION 112 BR-I-1 | COUNTY WILL | TOTAL SHEETS 28 | SHEET NO. 14 |
| | FED. ROAD DIST. NO. ILLINOIS FED. AID PROJECT | | | CONTRACT NO. 60H86 | |