

LEGEND

ROUTE MARKERS

FOR U.S. ROUTES
M1-40-2424

FOR ILLINOIS ROUTES
M1-50-2424

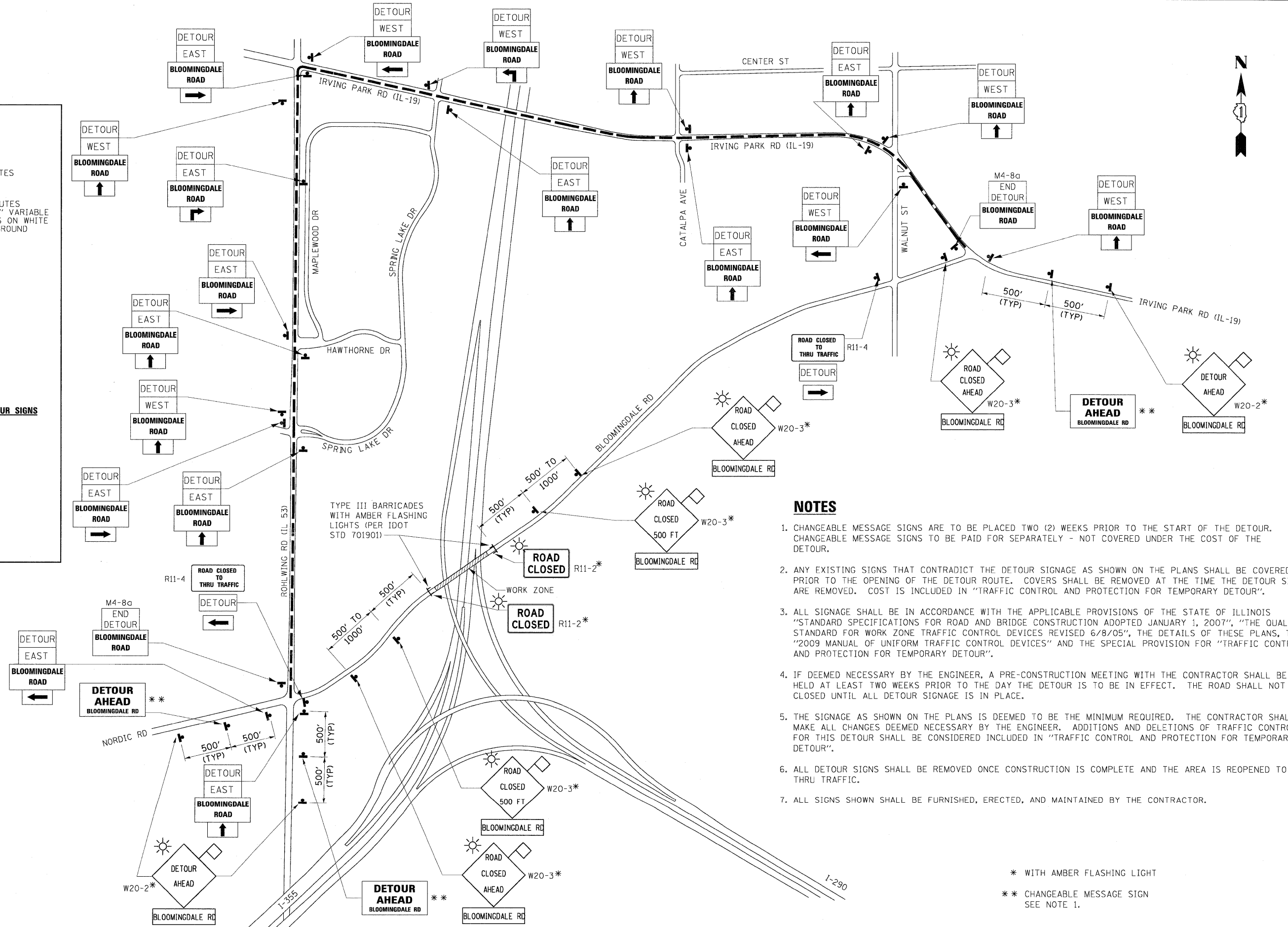
MAIN STREET
R.R. UNMARKED ROUTES
SPECIAL 24" x 18" VARIABLE
4" BLACK LETTERS ON WHITE
REFLECTIVE BACKGROUND

ARROW SIGNS

- M5-1L-2115
- M5-1R-2115
- M6-1L-2115
- M6-1R-2115
- M6-3-2115

CARDINAL DIRECTION & DETOUR SIGNS

- NORTH M3-1-219
- EAST M3-2-219
- SOUTH M3-3-219
- WEST M3-4-219
- DETOUR M1-7-219



NOTES

1. CHANGEABLE MESSAGE SIGNS ARE TO BE PLACED TWO (2) WEEKS PRIOR TO THE START OF THE DETOUR. CHANGEABLE MESSAGE SIGNS TO BE PAID FOR SEPARATELY - NOT COVERED UNDER THE COST OF THE DETOUR.
2. ANY EXISTING SIGNS THAT CONTRADICT THE DETOUR SIGNAGE AS SHOWN ON THE PLANS SHALL BE COVERED PRIOR TO THE OPENING OF THE DETOUR ROUTE. COVERS SHALL BE REMOVED AT THE TIME THE DETOUR SIGNS ARE REMOVED. COST IS INCLUDED IN "TRAFFIC CONTROL AND PROTECTION FOR TEMPORARY DETOUR".
3. ALL SIGNAGE SHALL BE IN ACCORDANCE WITH THE APPLICABLE PROVISIONS OF THE STATE OF ILLINOIS "STANDARD SPECIFICATIONS FOR ROAD AND BRIDGE CONSTRUCTION ADOPTED JANUARY 1, 2007", "THE QUALITY STANDARD FOR WORK ZONE TRAFFIC CONTROL DEVICES REVISED 6/8/05", THE DETAILS OF THESE PLANS, THE "2009 MANUAL OF UNIFORM TRAFFIC CONTROL DEVICES" AND THE SPECIAL PROVISION FOR "TRAFFIC CONTROL AND PROTECTION FOR TEMPORARY DETOUR".
4. IF DEEMED NECESSARY BY THE ENGINEER, A PRE-CONSTRUCTION MEETING WITH THE CONTRACTOR SHALL BE HELD AT LEAST TWO WEEKS PRIOR TO THE DAY THE DETOUR IS TO BE IN EFFECT. THE ROAD SHALL NOT BE CLOSED UNTIL ALL DETOUR SIGNAGE IS IN PLACE.
5. THE SIGNAGE AS SHOWN ON THE PLANS IS DEEMED TO BE THE MINIMUM REQUIRED. THE CONTRACTOR SHALL MAKE ALL CHANGES DEEMED NECESSARY BY THE ENGINEER. ADDITIONS AND DELETIONS OF TRAFFIC CONTROL FOR THIS DETOUR SHALL BE CONSIDERED INCLUDED IN "TRAFFIC CONTROL AND PROTECTION FOR TEMPORARY DETOUR".
6. ALL DETOUR SIGNS SHALL BE REMOVED ONCE CONSTRUCTION IS COMPLETE AND THE AREA IS REOPENED TO THRU TRAFFIC.
7. ALL SIGNS SHOWN SHALL BE FURNISHED, ERECTED, AND MAINTAINED BY THE CONTRACTOR.

* WITH AMBER FLASHING LIGHT
** CHANGEABLE MESSAGE SIGN
SEE NOTE 1.

FILE NAME =	DESIGNED - EJA	REVISED -	benesch	STATE OF ILLINOIS DEPARTMENT OF TRANSPORTATION	BLOOMINGDALE ROAD DETOUR PLAN		F.A.I. RTE. 290	SECTION 2009-1151	COUNTY DUPAGE	TOTAL SHEETS 27	SHEET NO. 3	
USER NAME =	DRAWN - EJA	REVISED -			SCALE: N.T.S.	SHEET NO. 1 OF 1 SHEETS	STA.	TO STA.	FED. ROAD DIST. NO.	ILLINOIS	FED. AID PROJECT	CONTRACT NO. 60J34
PLOT DATE = 03/22/2010	CHECKED - AJP	REVISED -										
	DATE - 3/19/10	REVISED -										