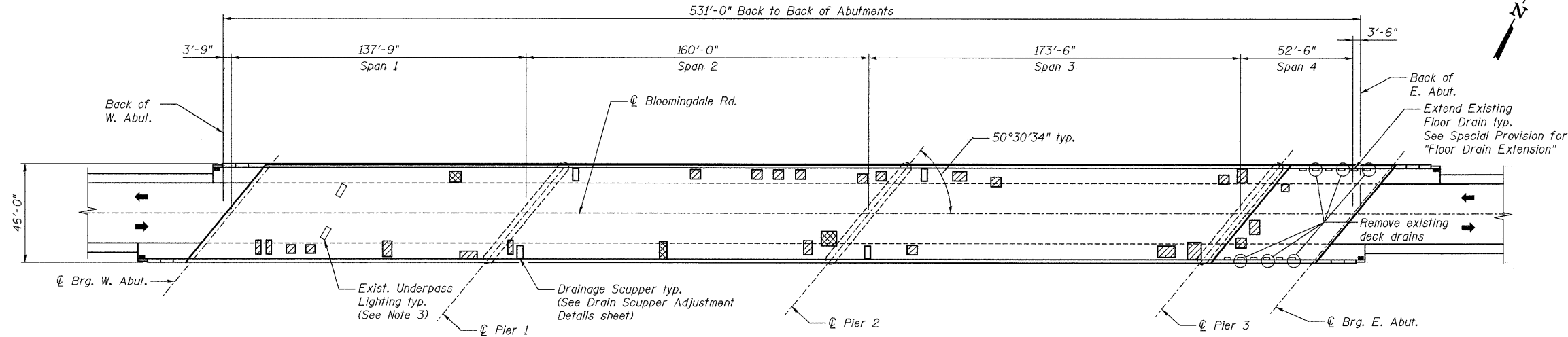
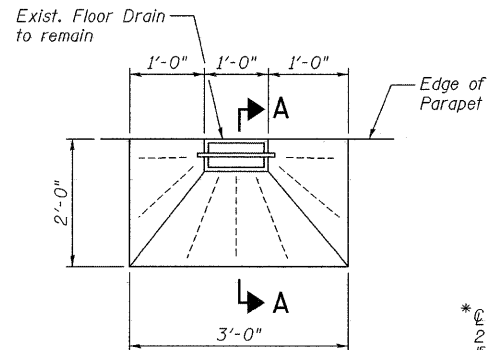


STATE OF ILLINOIS
DEPARTMENT OF TRANSPORTATION

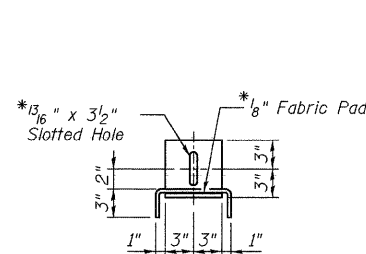


PLAN

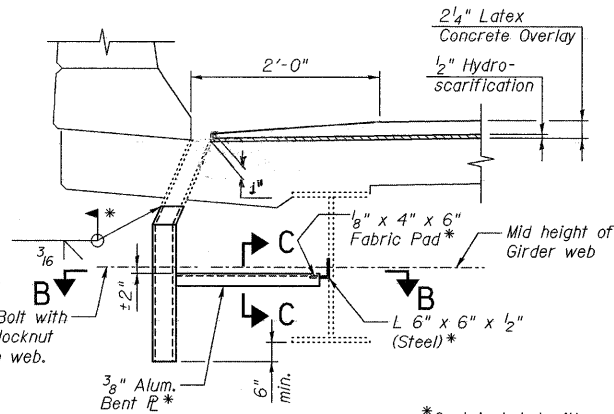


PLAN

CONCRETE OVERLAY AT FLOOR DRAINS TO REMAIN

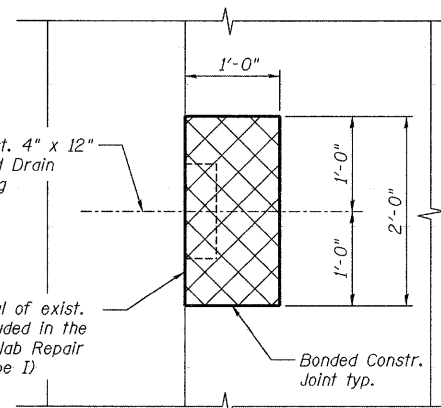
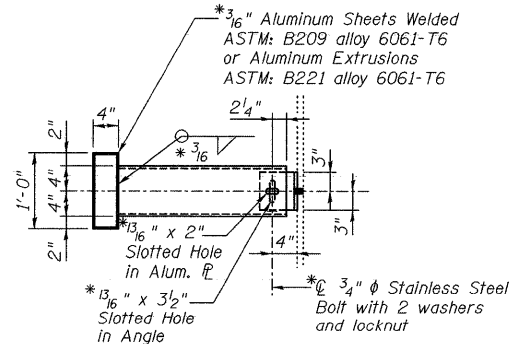


SECTION C-C

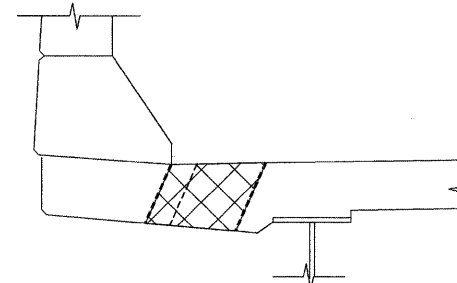


SECTION A-A

SECTION B-B

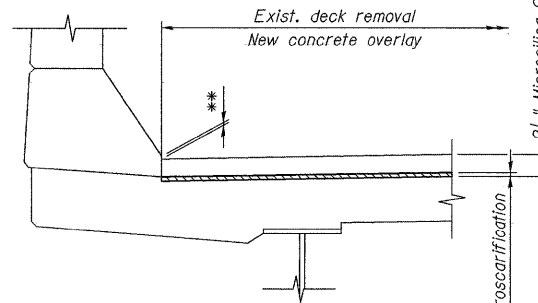


PLAN - DRAIN REMOVAL
(6 total)



SECTION AT DRAIN

** Contractor shall increase scarification thickness or reduce overlay thickness as directed by the Engineer to ensure this dimension is never less than 0".



SCARIFICATION & OVERLAY
DETAIL AT PARAPET

BILL OF MATERIAL

SYMBOL	ITEM	UNIT	QUANTITY
	Deck Slab Repair (Partial)	Sq. Yd.	16.9▲
	Deck Slab Repair (Full Depth, Type I)	Sq. Yd.	5.0
	Deck Slab Repair (Full Depth, Type II)	Sq. Yd.	9.3
	Cleaning and Painting Exposed Rebar (Special)	Sq. Ft.	50
	Protective Shield	Sq. Yd.	2,933
	Bridge Deck Grooving	Sq. Yd.	2,384
	Protective Coat	Sq. Yd.	2,986
	Bridge Deck Microsilica Concrete Overlay, 2 1/4"	Sq. Yd.	2,466
	Bridge Deck Hydro-Scarification, 1/2"	Sq. Yd.	2,466
	Floor Drain Extension	Each	6

▲ For information only to assist the Contractor in bidding. See Special Provision for "Bridge Deck Microsilica Concrete Overlay."

Notes:

- Deck repair areas are estimated based on an IDOT inspection in October of 2009. Actual repair areas and locations shall be determined by the Engineer and shown on As-Built plans.
- Protective Shield required for scarification operations and deck slab and/or parapet repairs shall be installed according to Article 501.03 of the Standard Specifications. For limits of Protective Shield, see General Plan and Elevation sheet.
- Extreme care shall be taken not to damage existing underpass lighting during construction. See Special Provision for "Protection and Maintenance of Existing Underpass Lighting".
- Deck drains (downspouts, floor drains, and scuppers) shall be cleaned prior to placement of the Microsilica Concrete Overlay. Cost of cleaning the deck drains is included in Bridge Deck Hydro-Scarification, 1/2".
- Proposed bolt holes in the existing Girder shall be subpunched or subdrilled 13/16" diameter and reamed in the field to 5/8" diameter. Cost included with Floor Drain Extension.

DESIGNED -	JLS
CHECKED -	KWS
DRAWN -	RMG
CHECKED -	KWS

benesch

alfred benesch & company
Engineers • Surveyors • Planners
205 North Michigan Avenue, Suite 2400
Chicago, Illinois 60601
312-565-0450 Job No. 10032.13

SHEET NO. 3 19 SHEETS	F.A.I. RTE.	SECTION	COUNTY	TOTAL SHEETS	SHEET NO.
	290	2009-115I	DUPAGE	27	8
FED. ROAD DIST. NO.			ILLINOIS	CONTRACT NO. 60J34	
			FED. AID PROJECT		