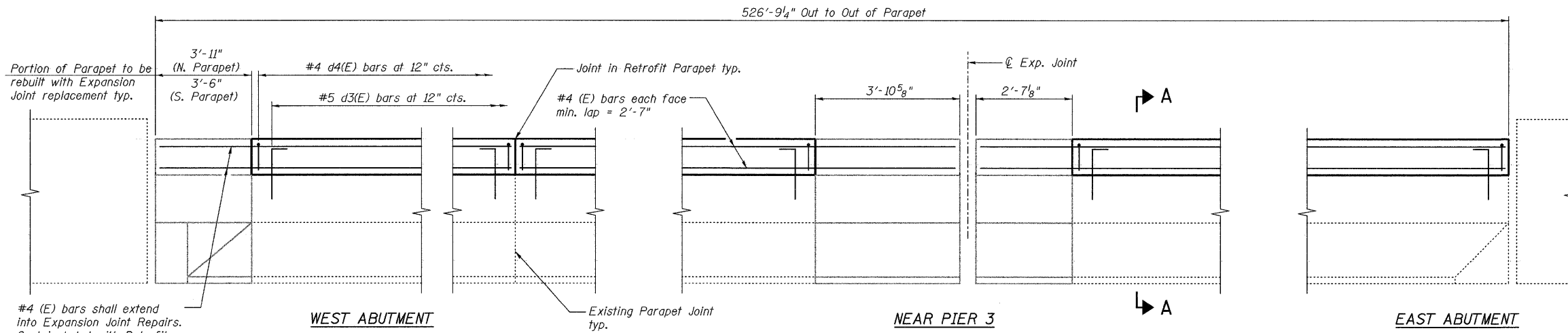
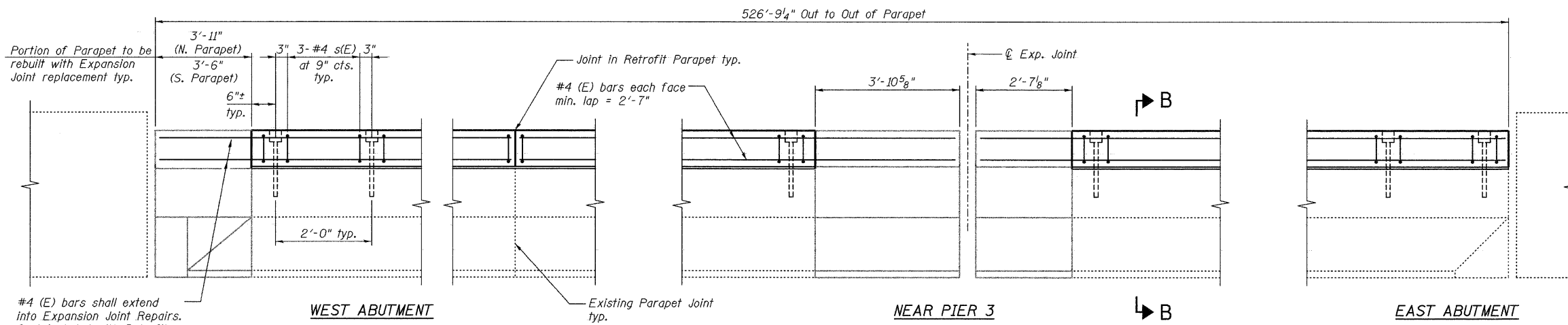


STATE OF ILLINOIS  
DEPARTMENT OF TRANSPORTATION



**INSIDE ELEVATION OF PARAPET**  
(Cast-In-Place Alternate)



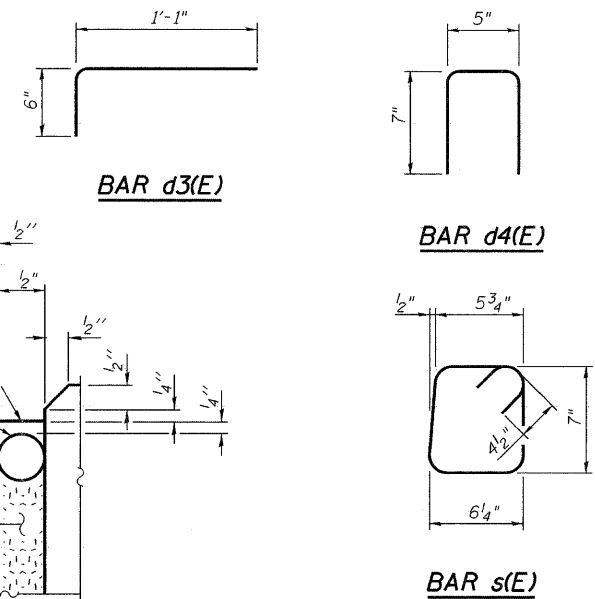
**INSIDE ELEVATION OF PARAPET**  
(Precast Alternate)

**Notes:**

- Class SI Concrete shall be used throughout for Cast-in-Place option.
- Class PC Concrete shall be used throughout for Precast option.
- All exposed edges shall be chamfered 3/4".
- Cost of all materials, labor and equipment to complete the work as detailed and as specified in the Special Provisions shall be included in the cost of "Retrofit Concrete Parapet".
- The Contractor shall use the capsule or adhesive cartridge type anchor rods that have been previously tested and given a prior approval by the Department. The Contractor shall install these rods in pre-drilled holes according to the manufacturer's recommendations and procedures.
- The capsule or adhesive cartridge shall be sealed glass capsule or a sealed glass adhesive cartridge containing premeasured amount of adhesive chemical. The threaded rod stud with nut & washers shall conform to ASTM A307.
- Epoxy grout d3(E) bars in 7/8" φ x 6" (min.) holes. The grout and the method of application shall be approved by the Department. (See Section 584 of the Standard Specifications). Cost included with "Retrofit Concrete Parapet".
- Retrofit Concrete Parapet shall be used on both sides of the bridge the full length of the bridge less portions poured with expansion joint repairs.
- The existing railing shall be removed along the entire length of the parapet and disposed of according to Article 501.05 of the Standard Specifications. Cost included with Retrofit Concrete Parapet.
- Work this sheet with Expansion Joint Details sheet.

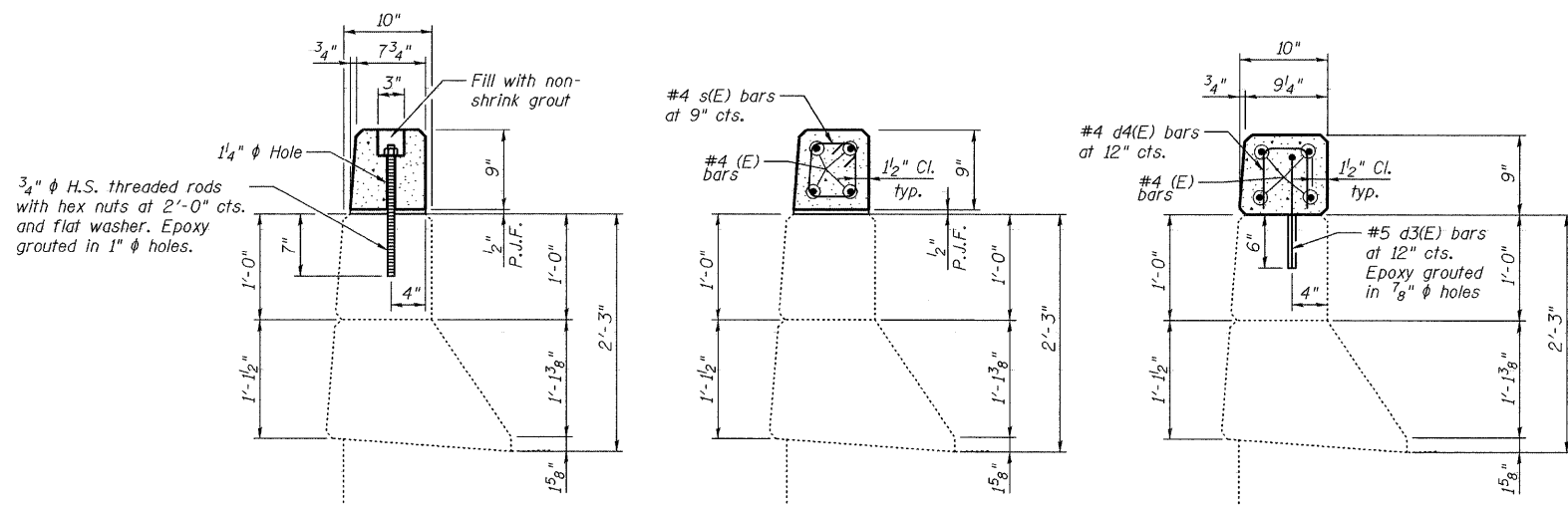
**BILL OF MATERIAL**

ITEM	UNIT	TOTAL
Retrofit Concrete Parapet	Foot	1,035



**JOINT DETAIL**

**PARAPET RETROFIT DETAILS**  
STRUCTURE NO. 022-0106



**PRECAST ALTERNATE**  
(Showing Attachment)

**PRECAST ALTERNATE**  
(Showing Reinforcement)

**CAST-IN-PLACE ALTERNATE**

**SECTION B-B**

**SECTION A-A**

DESIGNED -	JLS
CHECKED -	KWS
DRAWN -	RMG
CHECKED -	KWS

**benesch**

alfred benesch & company  
Engineers • Surveyors • Planners  
205 North Michigan Avenue, Suite 2400  
Chicago, Illinois 60601  
312-565-0450 Job No. 10032.13

SHEET NO. 4 19 SHEETS	F.A.I. RTE. 290	SECTION 2009-115I	COUNTY DUPAGE	TOTAL SHEETS 27	SHEET NO. 9
	CONTRACT NO. 60J34				
FED. ROAD DIST. NO.		ILLINOIS	FED. AID PROJECT		

x:\100000s\10032\engineer\ing\_documents\_contr-act-60j34\sr\_022\_0106\_bloomingdale\_r\0106-60j34-004-Parapet-retrofit.dgn 14:31:49 04/08/2010