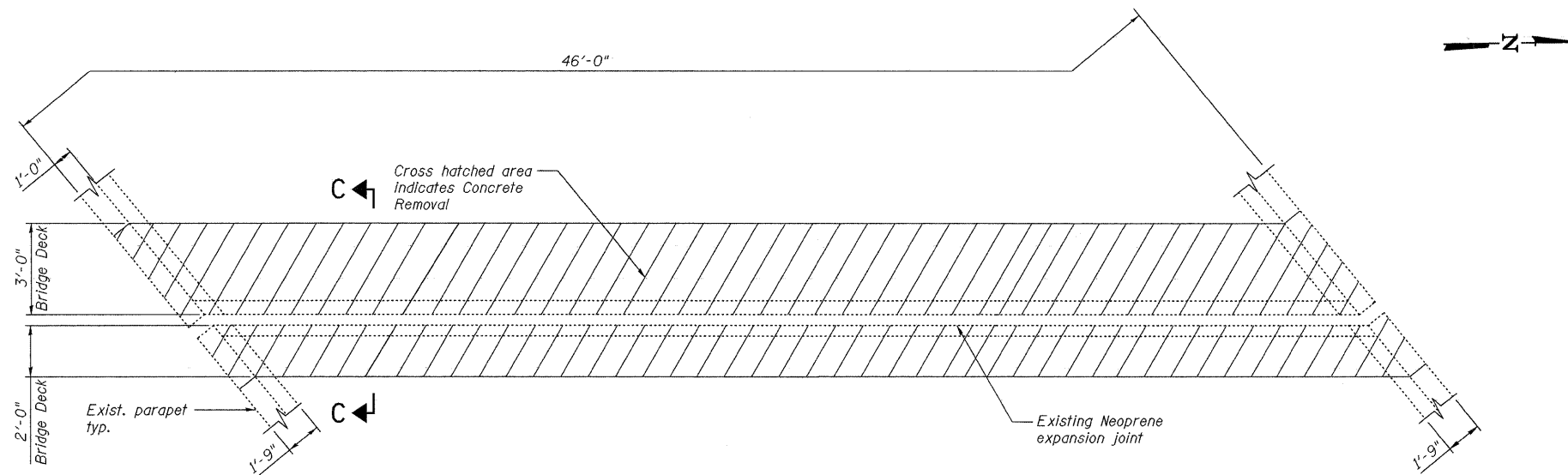


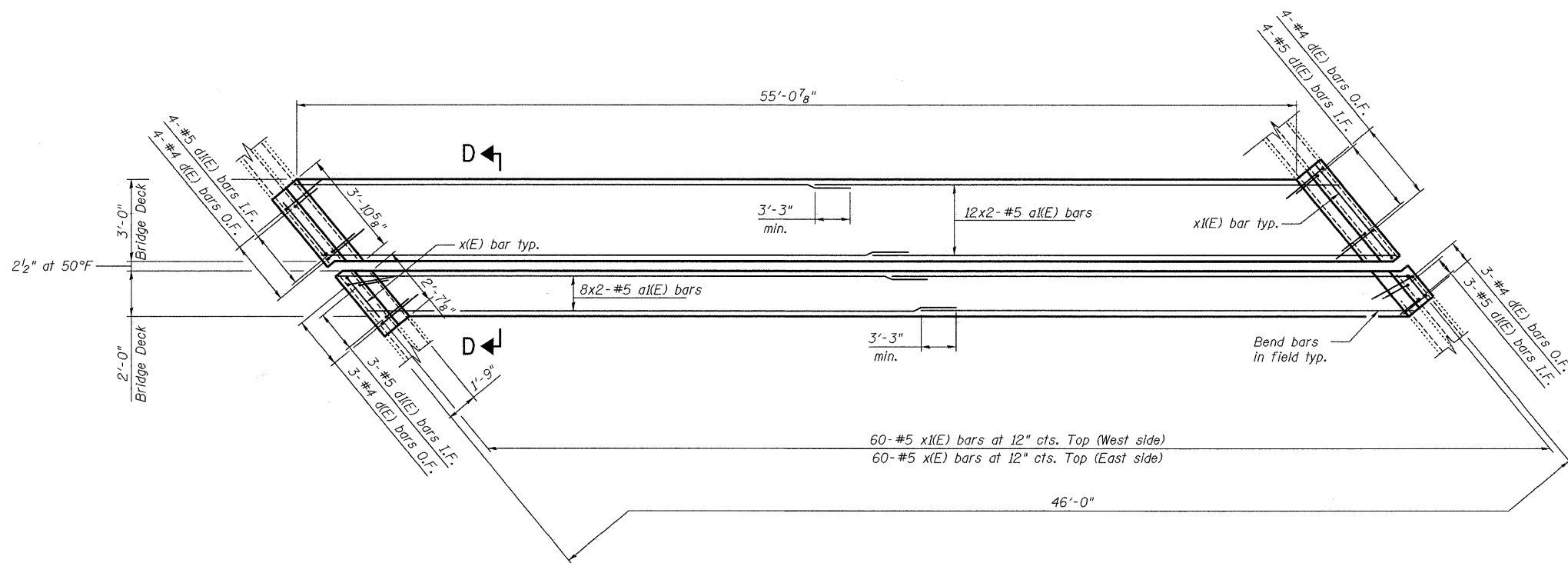
STATE OF ILLINOIS  
DEPARTMENT OF TRANSPORTATION

**BILL OF MATERIAL**

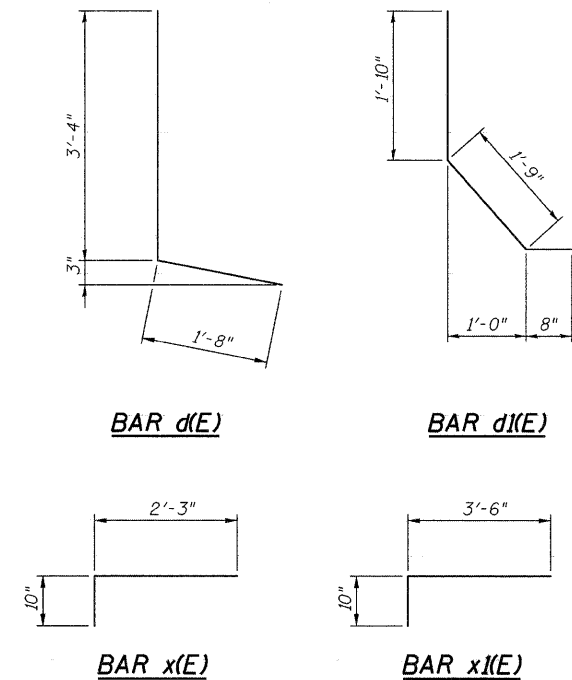
Bar	No.	Size	Length	Shape
a(E)	40	#5	31'-2"	—
d(E)	14	#4	5'-0"	┌
d(E)	14	#5	4'-3"	└
x(E)	60	#5	3'-1"	┌
x(E)	60	#5	4'-4"	┌
Item		Unit	Total	
Concrete Removal		Cu. Yd.	13.2	
Concrete Superstructure		Cu. Yd.	15.5	
Reinforcement Bars, Epoxy Coated		Pound	1,880	



**EXISTING PARTIAL PLAN AT LINK NEAR PIER 3**



**PROPOSED PARTIAL PLAN AT LINK NEAR PIER 3**



**Notes:**

- I.F. denotes Inside Face.  
O.F. denotes Outside Face.
- x(E) and x(E) bar spacing measured along skew.
- Bars indicated thus 3x2-#6 etc. indicates 3 lines of bars with 2 lengths per line.
- Work this sheet with Expansion Joint Details sheet and Preformed Joint Strip Seal sheet.

DESIGNED -	JLS
CHECKED -	KWS
DRAWN -	RMG
CHECKED -	KWS

**benesch**

alfred benesch & company  
Engineers • Surveyors • Planners  
205 North Michigan Avenue, Suite 2400  
Chicago, Illinois 60601  
312-565-0450 Job No. 10032.13

SHEET NO. 6 19 SHEETS	F.A.I. RTE. 290	SECTION 2009-115I	COUNTY DUPAGE	TOTAL SHEETS 27	SHEET NO. 11
	CONTRACT NO. 60J34				
FED. ROAD DIST. NO.		ILLINOIS	FED. AID PROJECT		

**EXPANSION JOINT REPAIRS 2 OF 2  
STRUCTURE NO. 022-0106**