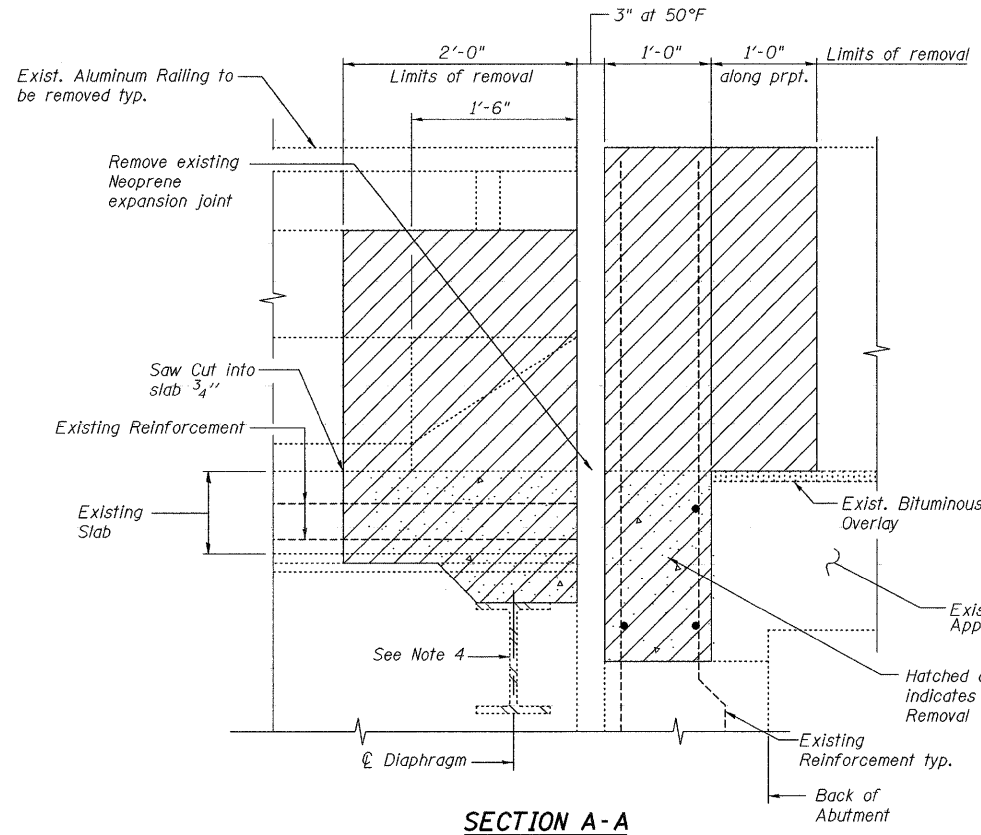
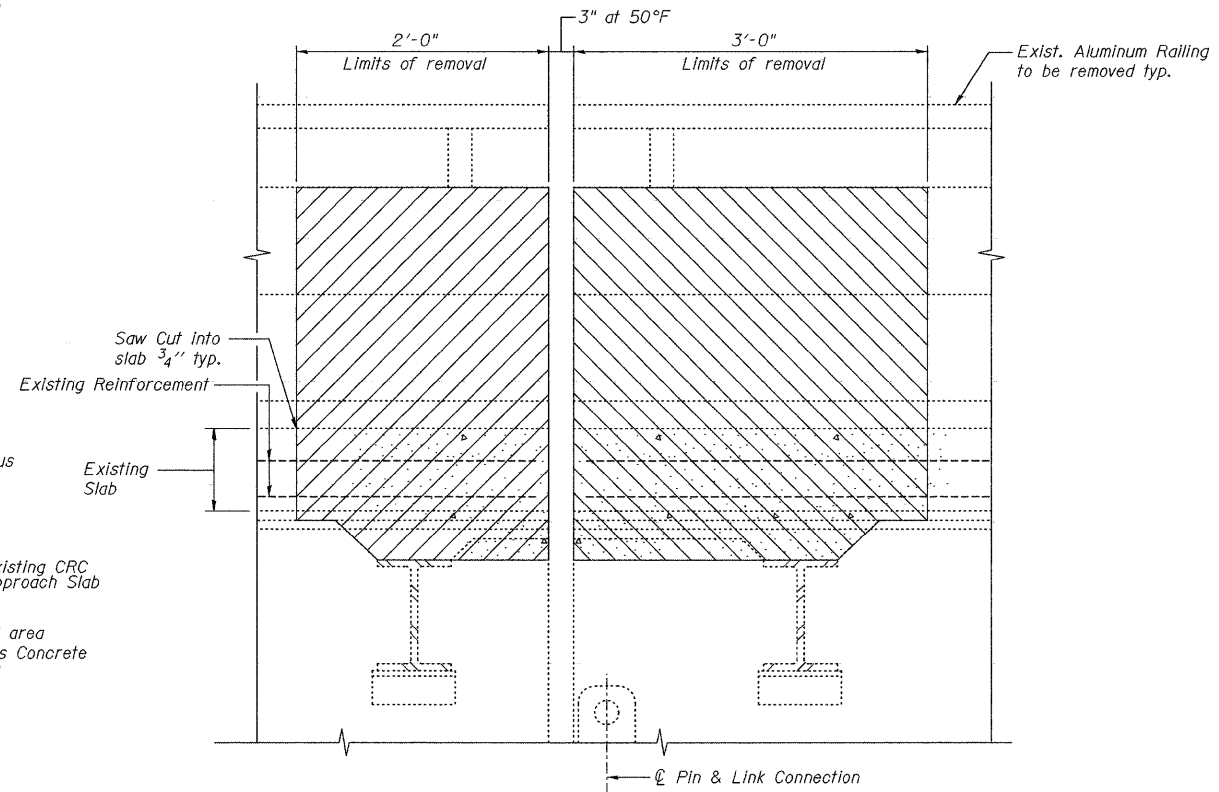


STATE OF ILLINOIS  
DEPARTMENT OF TRANSPORTATION



SECTION A-A

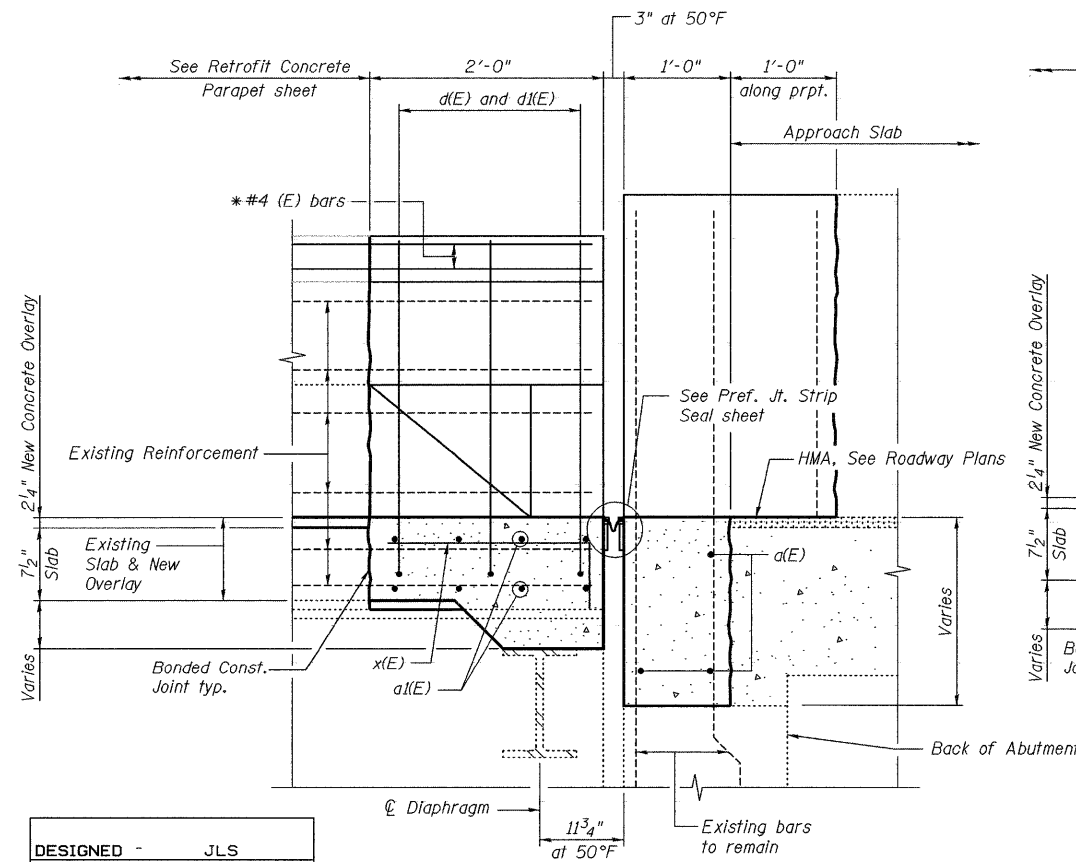


SECTION C-C

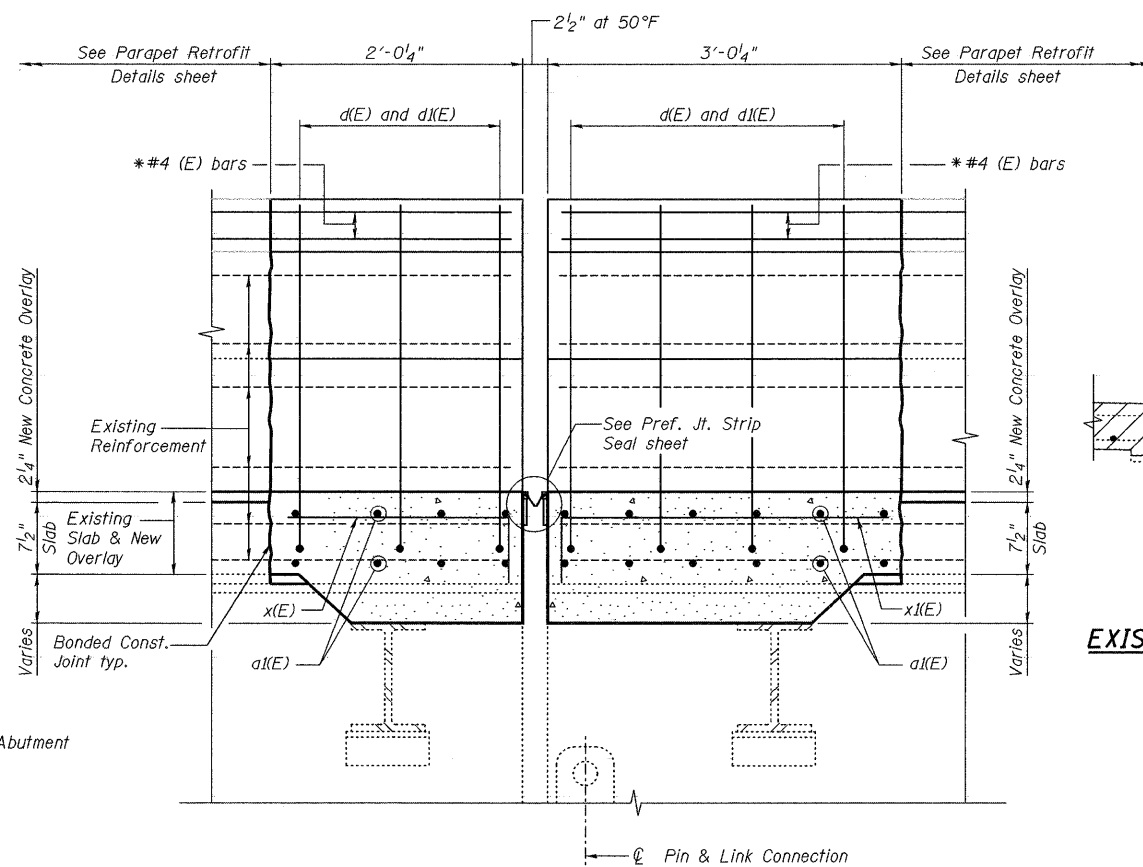
**Notes:**

- Existing reinforcement bars extending into the concrete removal area shall be cleaned, straightened and incorporated into the new construction. Any reinforcement bars that are damaged during concrete removal operations shall be repaired or replaced with an approved bar splicer or anchorage system. Cost included with Concrete Removal.
- Existing reinforcement bars in the concrete removal area parallel to the expansion joints shall be removed.
- Removal and disposal of the existing expansion joints will not be paid for separately, but shall be included with the cost of Concrete Removal.
- Contractor may remove and reinstall the existing diaphragm members as necessary to complete the required concrete removal and reconstruction. Cost included with Concrete Removal.
- Work this sheet with Expansion Joint Repairs sheets, Preformed Joint Strip Seal sheet and Parapet Retrofit Details sheet.

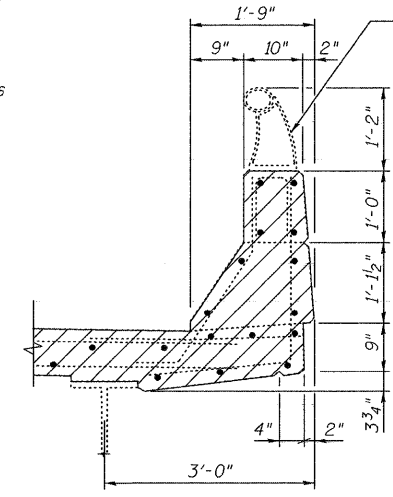
\* Bars extend into Parapet Retrofit. See Parapet Retrofit Details sheet.



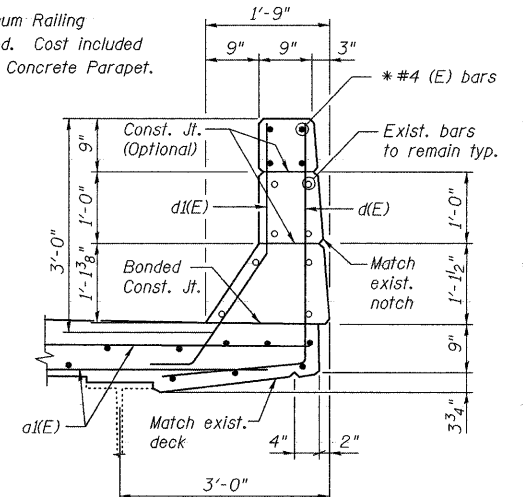
SECTION B-B



SECTION D-D



EXISTING PARAPET SECTION



PROPOSED PARAPET SECTION

DESIGNED -	JLS
CHECKED -	KWS
DRAWN -	RMG
CHECKED -	KWS

**benesch**

alfred benesch & company  
Engineers - Surveyors - Planners  
205 North Michigan Avenue, Suite 2400  
Chicago, Illinois 60601  
312-565-0450 Job No. 10032.13

SHEET NO. 7 19 SHEETS	F.A.I. RTE. 290	SECTION 2009-115I	COUNTY DUPAGE	TOTAL SHEETS 27	SHEET NO. 12
	CONTRACT NO. 60J34				
FED. ROAD DIST. NO.		ILLINOIS	FED. AID PROJECT		