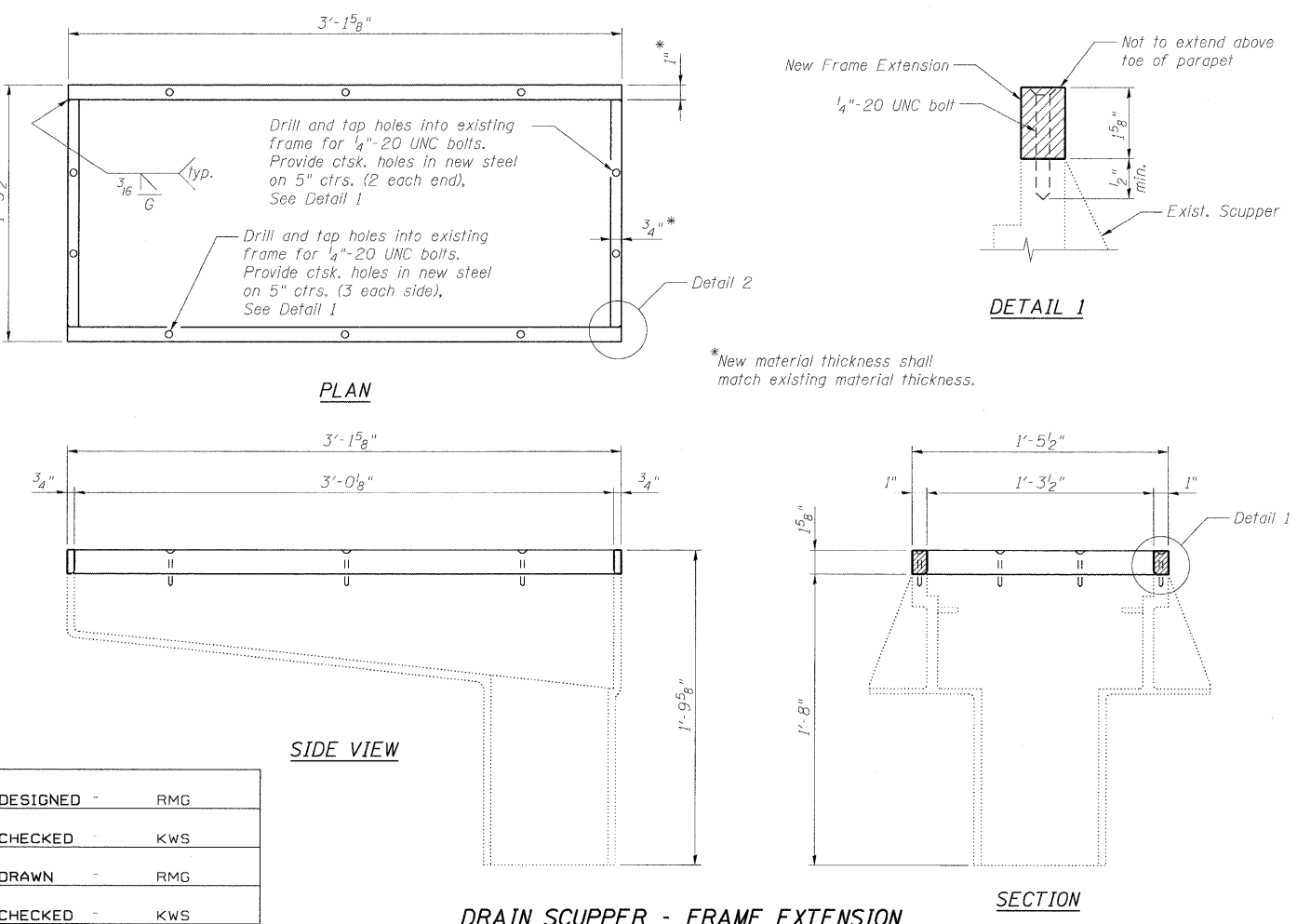
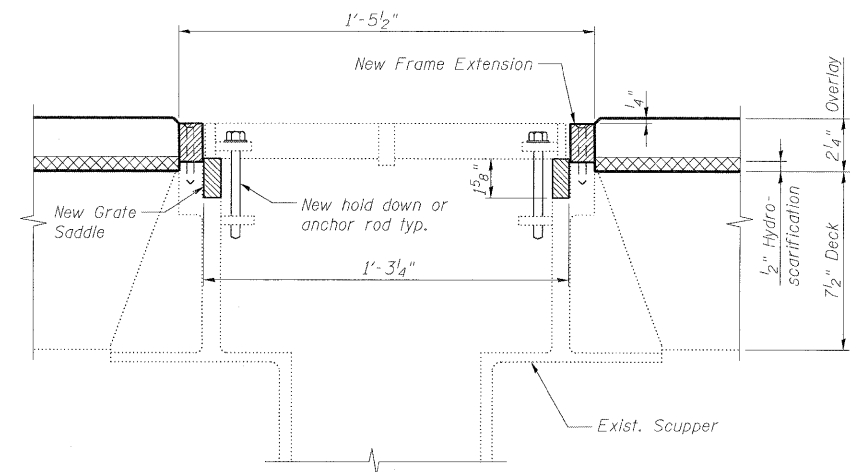
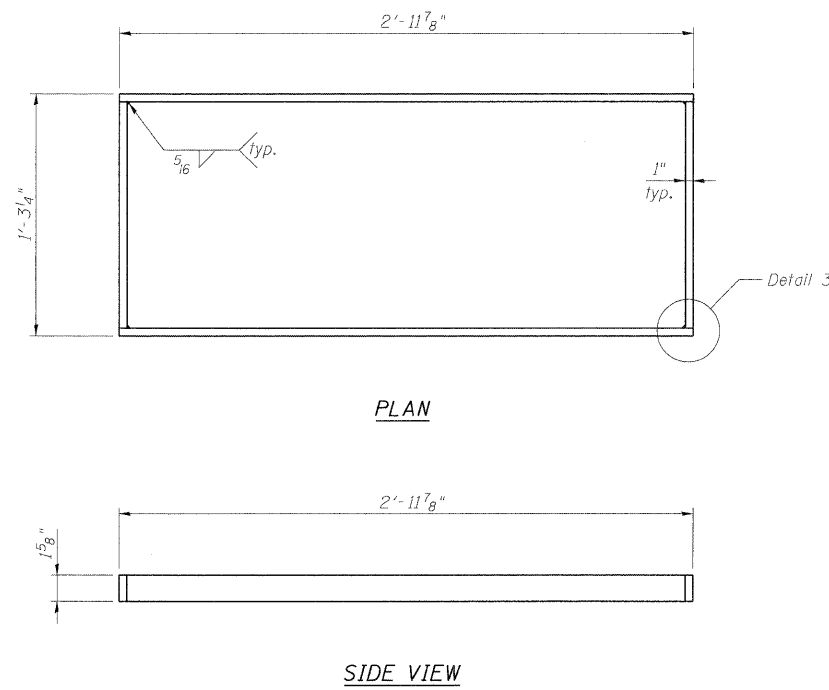
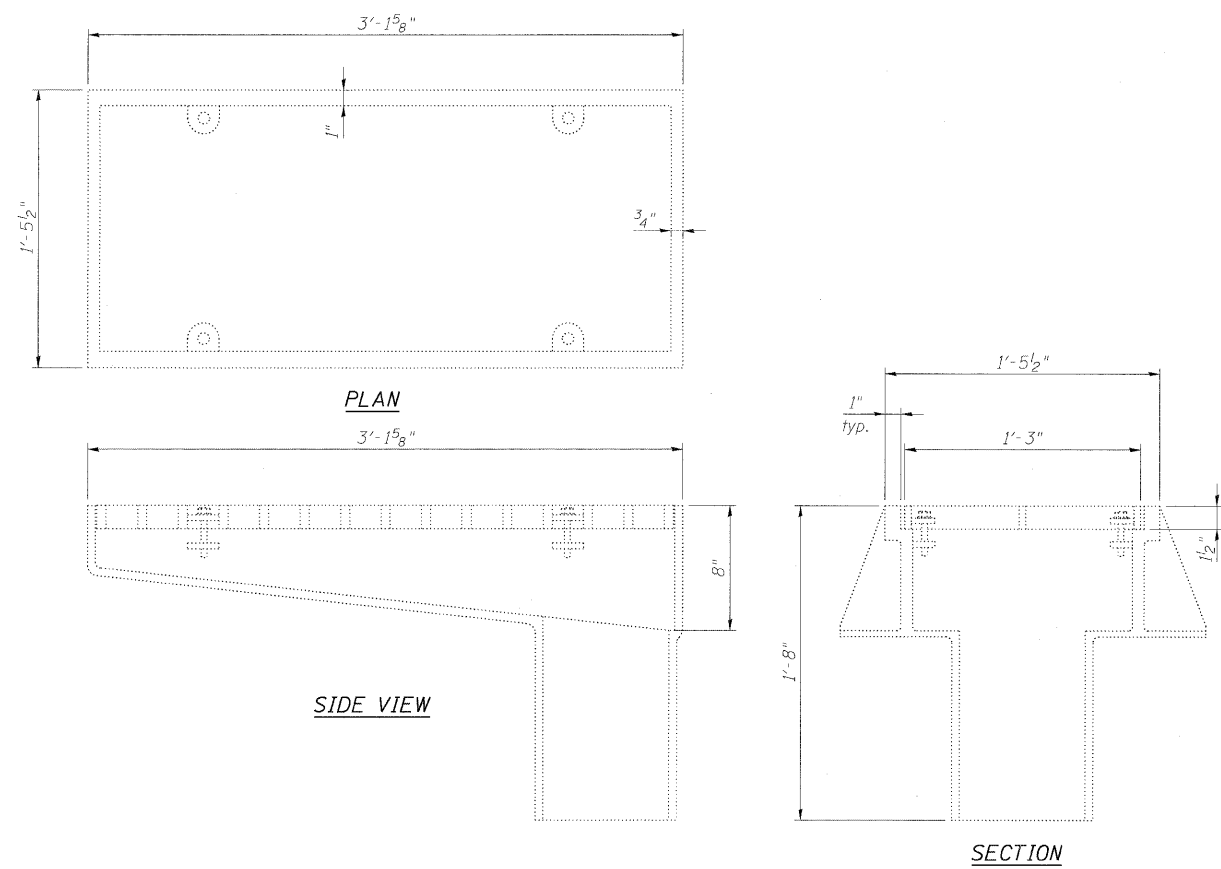
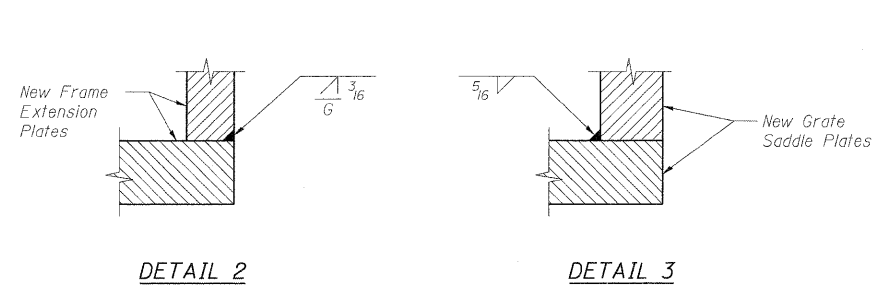


STATE OF ILLINOIS
DEPARTMENT OF TRANSPORTATION



GRATE SADDLE



Notes:

1. Material for extension and drain saddle shall conform to ASTM A36 (AASHTO M183) and shall be galvanized according to AASHTO Mill.
2. Bolts, anchor rods, nuts and washers shall conform to the requirements of ASTM A307 and shall be galvanized according to AASHTO M 232. As an alternate, bolts, anchor rods, nuts and washers may be stainless steel according to Article 1006.29(d) of the Standard Specifications.
3. The Contractor shall take appropriate measures to assure that Protective Coat is not applied to scuppers.
4. For scupper locations see Bridge Deck Repairs sheet.
5. Hold down bolts or anchor rods shall be long enough to accommodate adjusted height of grate and the diameter shall be chosen to utilize the existing holes.
6. Contractor to verify all existing material size, dimensions and thickness before ordering materials.

BILL OF MATERIAL

ITEM	UNIT	TOTAL
Adjusting Drainage Scuppers, Type B	Each	4

DESIGNED -	RMG
CHECKED -	KWS
DRAWN -	RMG
CHECKED -	KWS

**DRAIN SCUPPER ADJUSTMENT DETAILS
STRUCTURE NO. 022-0106**

SHEET NO. 12 19 SHEETS	F.A.I. RTE.	SECTION	COUNTY	TOTAL SHEETS	SHEET NO.
	290	2009-1151	DUPAGE	27	17
FED. ROAD DIST. NO.			ILLINOIS FED. AID PROJECT		
CONTRACT NO. 60J34					

benesch
alfred benesch & company
Engineers • Surveyors • Planners
205 North Michigan Avenue, Suite 2400
Chicago, Illinois 60601
312-566-0450 Job No. 10032.13