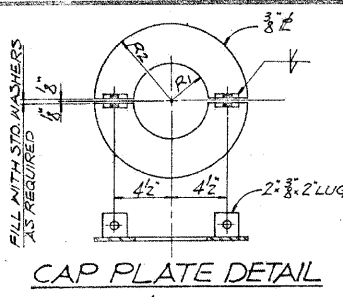
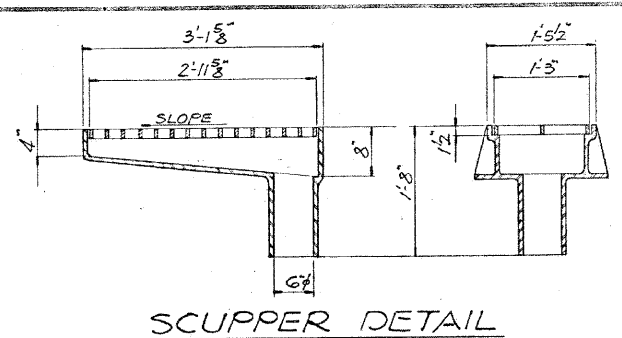


STATE OF ILLINOIS
DEPARTMENT OF TRANSPORTATION

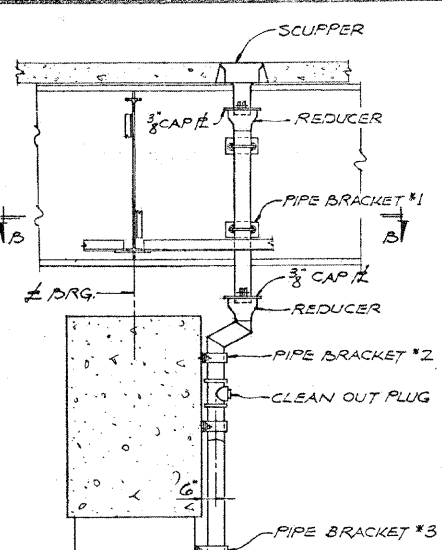
SHEET 2 OF 23

PROJECT NO.	22-1HB-3	COUNTY	DUPAGE	TOTAL SHEETS	27
F.A.I. RTE.	90	DU PAGE	87	23	
STA.	TO STA.				
F.P.R. REG. NO. 4	ILLINOIS	PROJECT			



CAP PLATE TABLE

	R1	R2
R #1	3 3/8"	6 3/8"
R #2	3 3/8"	9"



GENERAL NOTES

ALL REINFORCEMENT BARS SHALL BE LAPPED 24 DIAMETERS UNLESS OTHERWISE SHOWN.

FIELD CONNECTIONS SHALL BE BOLTED USING HIGH STRENGTH BOLTS. BOLTS 3/4" DIAMETER, OPEN HOLES 13/16" DIAMETER, UNLESS OTHERWISE NOTED.

STRUCTURAL STEEL WELDMENTS OF EQUAL SECTIONS AND STRENGTH MAY BE SUBSTITUTED FOR CASTINGS AT THE OPTION OF THE CONTRACTOR, SUBJECT TO APPROVAL BY THE ENGINEER PRIOR TO FABRICATION. NO ADDITIONAL COMPENSATION WILL BE ALLOWED THE CONTRACTOR FOR THIS SUBSTITUTION.

ROADWAY EXPANSION GUARDS SHALL BE ASSEMBLED IN THE PROPER POSITION WITH THE ENDS IN PLACE AND SHALL BE LEFT ASSEMBLED FOR SHOP INSPECTION.

EXCEPT AS OTHERWISE PROVIDED, ALL STRUCTURAL STEEL SHALL RECEIVE ONE SHOP COAT OF RED LEAD PAINT AND TWO FIELD COATS OF PAINT. SEE SPECIAL PROVISIONS FOR FIELD PAINT.

FIELD WELDING OF CONSTRUCTION ACCESSORIES WILL NOT BE PERMITTED TO THE BOTTOM OF FLANGE OF GIRDERS NOR ON THE TOP FLANGE FOR A DISTANCE EQUAL TO ONE-FOURTH THE SPAN LENGTH EACH WAY FROM THE PIER SUPPORTS. FIELD WELDING IN OTHER AREAS WILL BE PERMITTED ONLY WHEN APPROVED BY THE ENGINEER.

ANCHOR BOLTS SHALL BE SET BEFORE BOLTING CROSS FRAMES OVER SUPPORTS.

SLOPE WALL SHALL BE REINFORCED WITH WELDED WIRE FABRIC 6" X 6" MESH, WEIGHING 58# PER 100 SQ. FT.

THE CONTRACTOR SHALL DRIVE ONE CONCRETE TEST PILE IN A PERMANENT LOCATION AT EACH ABUTMENT AS DIRECTED BY THE ENGINEER BEFORE ORDERING THE REMAINDER OF PILES.

THE CONTRACTOR SHALL DRIVE ONE TIMBER TEST PILE IN THE VICINITY OF EACH PIER AS DIRECTED BY THE ENGINEER BEFORE ORDERING THE TIMBER PILES.

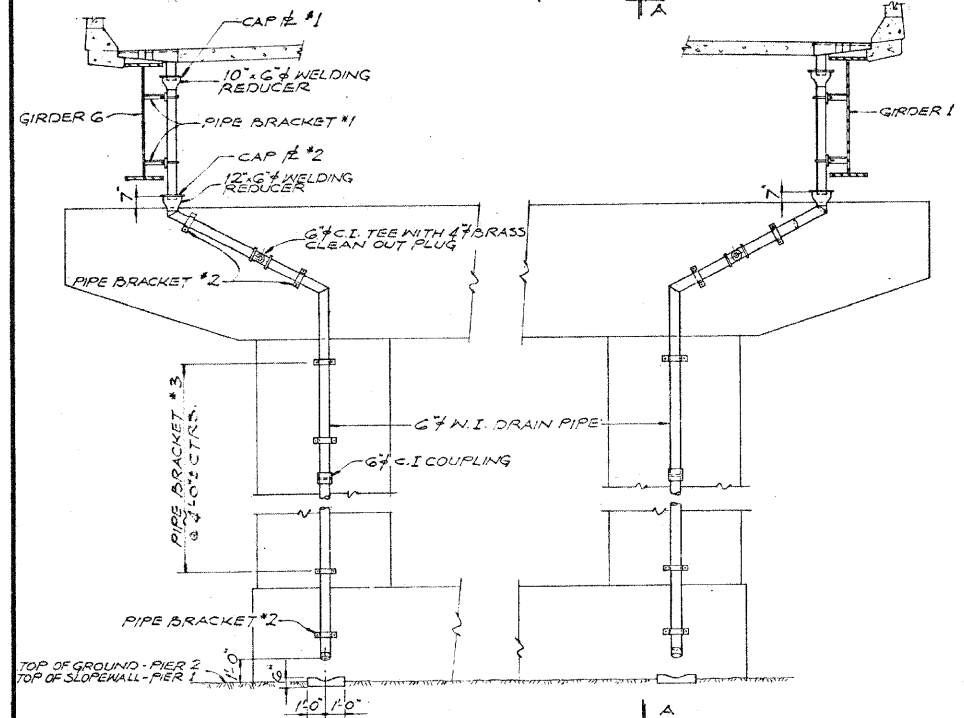
CONCRETE PILES AT ABUTMENTS SHALL BE DRIVEN IN HOLES PRECORED THROUGH THE EMBANKMENT IN ACCORDANCE WITH ARTICLE 513.09 (c) OF THE STANDARD SPECIFICATIONS.

PERMANENT FORMS WILL NOT BE PERMITTED IN FORMING THE CONCRETE FLOOR.

THE EMBANKMENT CONFIGURATION SHOWN SHALL BE THE MINIMUM EMBANKMENT THAT MUST BE CONSTRUCTED PRIOR TO CONSTRUCTION OF THE ABUTMENTS.

CLASS A EXCAVATION FOR STRUCTURES INCLUDES EXCAVATION FOR SLOPE WALL.

THE CONCRETE RAIL SECTION ABOVE THE MANDATORY CONSTRUCTION JOINT AT THE TOP OF THE SLAB SHALL BE CONSTRUCTED OF CLASS X CONCRETE, EXCEPT THE AGGREGATES SHALL CONFORM TO THE REQUIREMENTS OF HANDRAIL CONCRETE.



DRAINAGE NOTES

MATERIALS. SCUPPERS SHALL CONFORM TO THE REQUIREMENTS OF ARTICLE 710.17 OF THE STANDARD SPECIFICATIONS.

WROUGHT IRON PIPE SHALL BE STANDARD WEIGHT PIPE CONFORMING TO A.S.T.M. SPECIFICATION A72. ALL FITTINGS SUCH AS ELBOWS AND REDUCERS SHALL BE WROUGHT IRON WELDING FITTINGS UNLESS OTHERWISE SHOWN.

CAST IRON FITTINGS SHALL CONFORM TO A.S.T.M. SPECIFICATION A126.

THE PIPE BRACKETS SUPPORTING THE WROUGHT IRON PIPE TO CONCRETE MEMBERS SHALL BE GALVANIZED AFTER FABRICATION IN ACCORDANCE WITH A.S.T.M. SPECIFICATION A123.

AFTER INSTALLATION, THE PIPE AND ITS SUPPORTS SHALL BE CLEANED AND PAINTED WITH ONE COAT OF RED LEAD PAINT AND TWO COATS OF ALUMINUM PAINT.

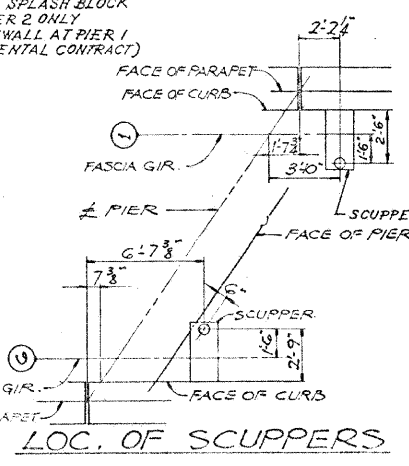
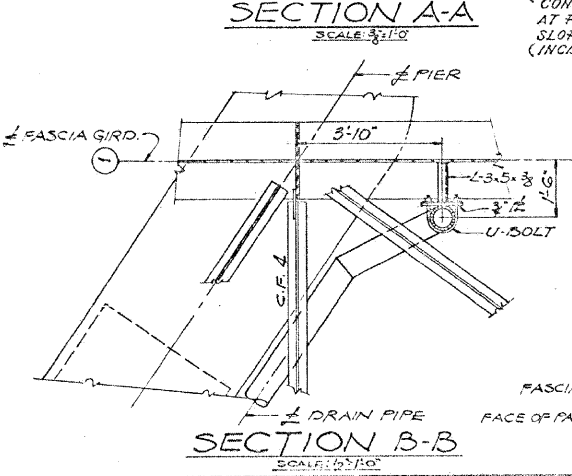
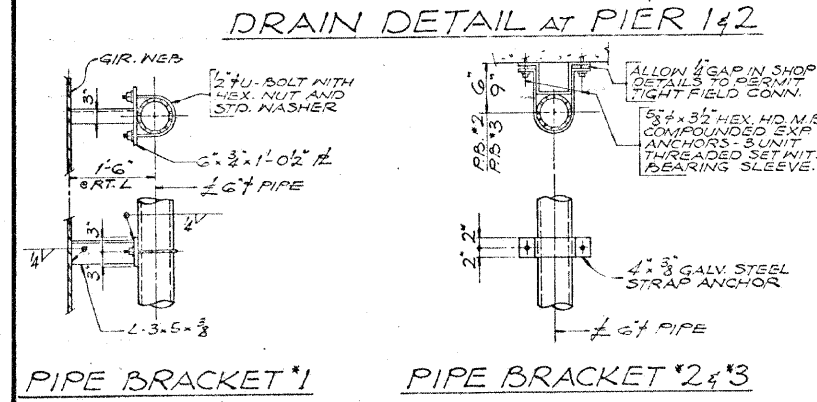
METHOD OF MEASUREMENT. THE ACTUAL NUMBER OF LINEAR FEET OF WROUGHT IRON PIPE, INCLUDING FITTINGS, FURNISHED AND INSTALLED IN THE WORK, WILL BE MEASURED FOR PAYMENT IN PLACE ALONG THE CENTERLINE OF THE PIPE FROM END TO END THROUGH ALL FITTINGS. AT BENDS, MEASUREMENT WILL BE TAKEN TO THE INTERSECTION OF LONGITUDINAL AXES OF THE RUN.

SCUPPERS WILL BE PAID FOR AT THE CONTRACT UNIT PRICE EACH FOR CAST IRON SCUPPERS, WHICH PRICE SHALL BE PAYMENT IN FULL FOR FURNISHING AND PLACING THE CASTINGS COMPLETE.

QUANTITIES

TOTAL	SUPER	SUB	UNIT	ITEM
575	-	575	CU. YD.	CLASS A EXCAVATION FOR STRUCTURES
2,901	2,901	-	SQ. YD.	PROTECTIVE COAT
1,554.7	724.4	830.3	CU. YD.	CLASS X CONCRETE
1	1	-	LUMP SUM	FURNISHING & ERECTING STRUCTURAL STEEL
4,656	4,656	-	EACH	STUD SHEAR CONNECTORS
1,054	1,054	-	LIN. FT.	ALUMINUM RAILING
322,770	211,840	110,930	LB.	REINFORCEMENT BARS
5,040	-	5,040	LIN. FT.	FURNISHING CREOSOTED PILES 20.1 FT. TO 38 FT.
2,740	-	2,740	LIN. FT.	FURNISHING CONCRETE PILES
5,040	-	5,040	LIN. FT.	DRIVING TIMBER PILES
2,740	-	2,740	LIN. FT.	DRIVING CONCRETE PILES
3	-	3	EACH	TEST PILE TIMBER
2	-	2	EACH	TEST PILE CONCRETE
2	-	2	EACH	NAME PLATES
1,302	-	1,302	SQ. YD.	SLOPE WALL, 4 INCH
1	-	1	L.S.	BRIDGE SEAT SEALANT
197	-	197	LIN. FT.	WROUGHT IRON PIPE, 6 INCH
4	4	-	EACH	CAST IRON SCUPPERS
210	-	210	LIN. FT.	GALVANIZED RIGID STEEL CONDUIT, 2 INCH DIAMETER

Calculated weight of Structural Steel = 1,108,020 POUNDS



QUANTITIES, GENERAL NOTES & DRAINAGE DETAILS
NORDIC RD.
OVER F.A.I. RTE. 90 & F.A.P. RTE. 61
PROJECT
SECTION 22-1HB-3
DU PAGE COUNTY
STATION 28+79.81

ALFRED BENESCH & COMPANY
CONSULTING ENGINEERS
105 WABASH AVE., CHICAGO, ILLINOIS

FOR INFORMATION ONLY

benesch
Engineers • Surveyors • Planners
205 North Michigan Avenue, Suite 2400
Chicago, Illinois 60601
312-666-0450 Job No. 10032.13

SHEET NO. 14	F.A.I. RTE. 290	SECTION 2009-1151	COUNTY DUPAGE	TOTAL SHEETS 27	SHEET NO. 19
19 SHEETS			CONTRACT NO. 60J34		
FED. ROAD DIST. NO.		ILLINOIS FED. AID PROJECT			

EXISTING PLAN INFORMATION 2 OF 7
STRUCTURE NO. 022-0106

x:\10000s\10032\engineering\documents\contract_60j34\sn_022_0106_b\comingdale_r-d\0106-60j34-014-Exisplan_02.dgn 15:46:52 03/22/2010