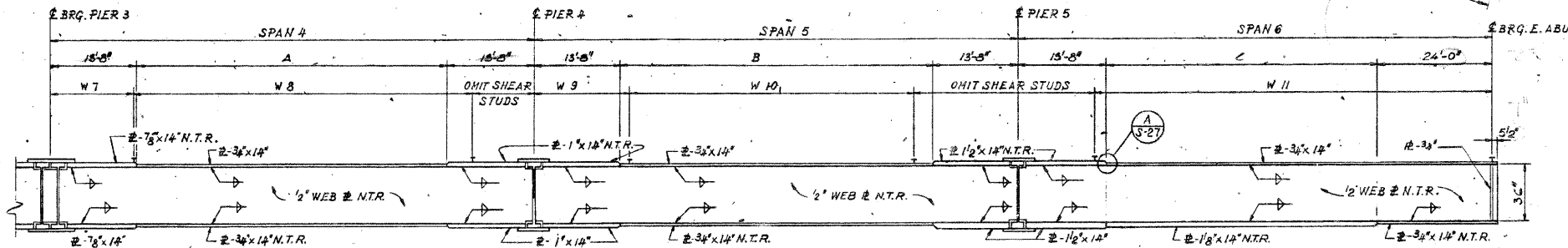
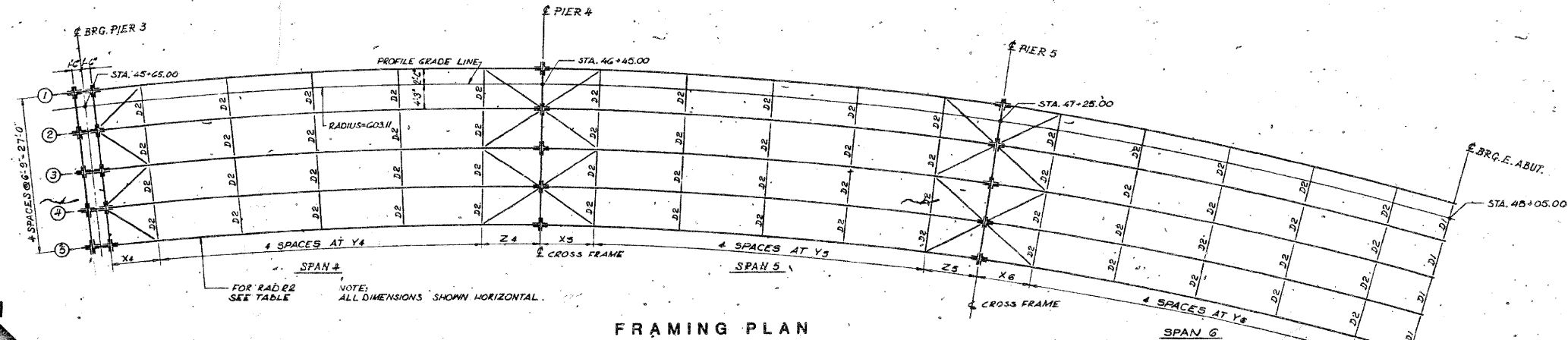


STATE OF ILLINOIS
DEPARTMENT OF TRANSPORTATION

125



STRINGER ELEVATION
STRINGER 5 SHOWN

NOTE:
NTR DESIGNATES MEMBERS SUBJECT TO THE SUPPLEMENTAL REQUIREMENTS FOR NOTCH TOUGHNESS, ZONE 2 ALL MATERIAL TO BE M225 EXCEPT AS SHOWN OR NOTED.

STRINGER DIMENSION (SEE ELEVATION)

GIRDER	SPAN 4			SPAN 5			SPAN 6		
	W7	W8	RAD (R2)	W9	W10	RAD (R2)	W11	W12	RAD (R2)
1	80'-4"	55'-0"	605.G1	80'-4"	55'-0"	605.G1	80'-4"	55'-0"	605.G1
2	79'-5 1/2"	52'-1 1/4"	578.BG	79'-5 1/2"	52'-1 1/4"	578.BG	79'-5 1/2"	52'-1 1/4"	578.BG
3	78'-6 1/2"	51'-2 1/2"	572.H	78'-6 1/2"	51'-2 1/2"	572.H	78'-6 1/2"	51'-2 1/2"	572.H
4	77'-7 3/4"	50'-3 3/4"	565.SG	77'-7 3/4"	50'-3 3/4"	565.SG	77'-7 3/4"	50'-3 3/4"	565.SG
5	76'-9"	49'-0 1/2"	578.G1	76'-9"	49'-0 1/2"	578.G1	76'-9"	49'-0 1/2"	578.G1

LOCATION OF STUDS

GIRDER	W7	W8		W9		W10		W11	
		Start	End	Start	End	Start	End	Start	End
1	13'-4"	43'-15"	15'-0"	34'-0"	47'-3"	15'-0"	34'-0"	47'-3"	15'-0"
2	13'-4"	42'-0"	15'-0"	33'-0"	46'-0"	15'-0"	33'-0"	46'-0"	15'-0"
3	13'-4"	42'-0"	15'-0"	33'-0"	46'-0"	15'-0"	33'-0"	46'-0"	15'-0"
4	13'-4"	41'-15"	15'-0"	32'-0"	45'-0"	15'-0"	32'-0"	45'-0"	15'-0"
5	13'-4"	40'-0"	15'-0"	30'-0"	44'-0"	15'-0"	30'-0"	44'-0"	15'-0"

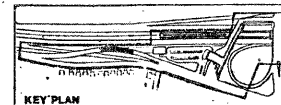
LOCATION OF DIAPHRAGMS

GIRDER	X4		X5		X6		X7	
	Start	End	Start	End	Start	End	Start	End
1	10'-0"	15'-1"	10'-0"	15'-1"	10'-0"	15'-1"	10'-0"	15'-1"
2	9'-10 1/2"	14'-11"	9'-10 1/2"	14'-11"	9'-10 1/2"	14'-11"	9'-10 1/2"	14'-11"
3	9'-9 3/4"	14'-9"	9'-9 3/4"	14'-9"	9'-9 3/4"	14'-9"	9'-9 3/4"	14'-9"
4	9'-8"	14'-6 1/2"	9'-8"	14'-6 1/2"	9'-8"	14'-6 1/2"	9'-8"	14'-6 1/2"
5	9'-6 3/4"	14'-4 1/2"	9'-6 3/4"	14'-4 1/2"	9'-6 3/4"	14'-4 1/2"	9'-6 3/4"	14'-4 1/2"

	0.5 SPAN 4	PIER 4	0.5 SPAN 5	PIER 5	0.5 SPAN 6
I _s (NON-COMP)	(I _{HA}) 9035	11529	9035	16717	10695
I _s	(I _{HA}) 482	607	482	857	634
I _o (n=10)	(I _{HA}) 21345	—	21345	—	26658
S _c	(I _{HA}) 658	—	658	—	858
I _o (n=30)	(I _{HA}) 15878	—	15878	—	19298
S _c	(I _{HA}) 601	—	601	—	783
D.L.	(K') 0.90	0.90	0.90	0.90	0.90
M.D.L.	(K') 189	250	189	656	355
F.D.L. (NON COMP)	(KSI) 4.7	4.9	4.7	9.3	6.7
S.D.L.	(K') 0.35	0.35	0.35	0.35	0.35
M.S.D.L.	(K') 112	108	112	236	177
F.S.D.L. (n=30)	(KSI) 2.2	2.1	2.2	3.3	2.7
M.L.L.	(K') 489	336	489	423	606
M.I.M.P.	(K') 119	82	119	103	148
M.L.L.+I	(K') 608	418	608	526	754
F.L.L.+I (n=10)	(KSI) 11.1	8.3	11.1	7.4	10.6
F(D.L.+S.D.L.+L.L.+I)	(KSI) 18.0	15.3	18.0	20.0	20.0
M.L.A.T.	(K') 10.8	4.1	10.8	7.3	15.2
F.L.A.T.	(KSI) 5.3	1.5	5.3	1.8	5.0
TOTAL F(D.L.+S.D.L.+L.L.+M.L.A.T.)	(KSI) 23.3	16.8	23.3	21.8	25.0

SEE NOTE S-25

In Charge: T.A.
Designed By: B.G.
Drawn By: S.S.
Checked By: S.H.
Approved By: T.A.



NOT TO SCALE

CITY OF CHICAGO
DEPARTMENT OF PUBLIC WORKS
BUREAU OF ENGINEERING
C'HARE EXTENSION
CONTRACT 01-15
(HARLEM STATION COMPLEX)
STEEL FRAMING PLAN & GIRDER ELEVATION
Date: AUG. 1960 Sheet No. 8-28
ISSUED FOR BID 17 DEC 60

FOR INFORMATION ONLY

benesch
Engineers • Surveyors • Planners
205 North Michigan Avenue, Suite 2400
Chicago, Illinois 60601
312-565-0450 Job No. 10032.13

SHEET NO. 12	F.A.U. RTE.	SECTION	COUNTY	TOTAL SHEETS	SHEET NO.
	14 SHEETS				
FED. ROAD DIST. NO.			ILLINOIS FED. AID PROJECT		
CONTRACT NO. 60J58					

EXISTING PLAN INFORMATION 2 OF 4
STRUCTURE NO. 016-2519