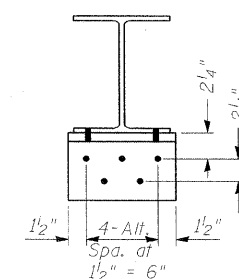
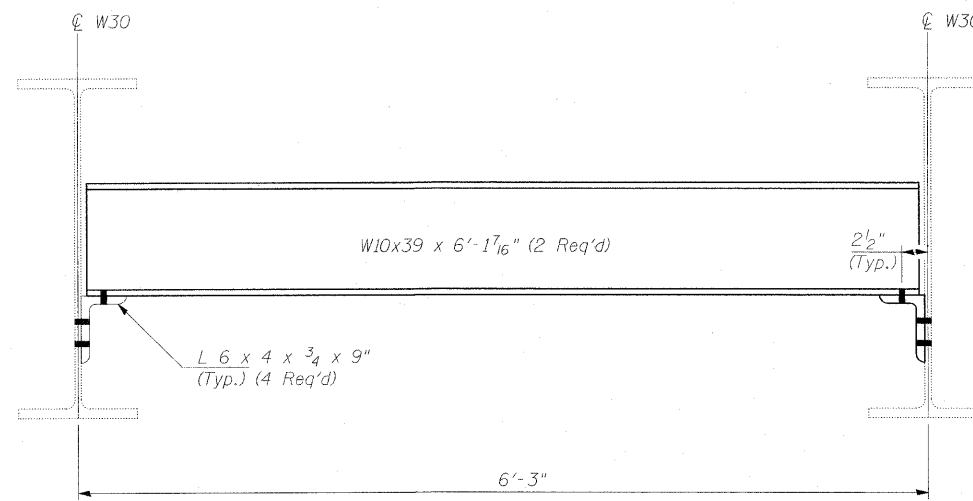
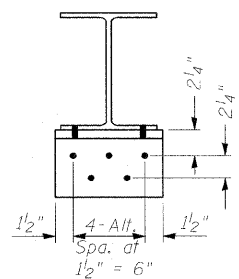
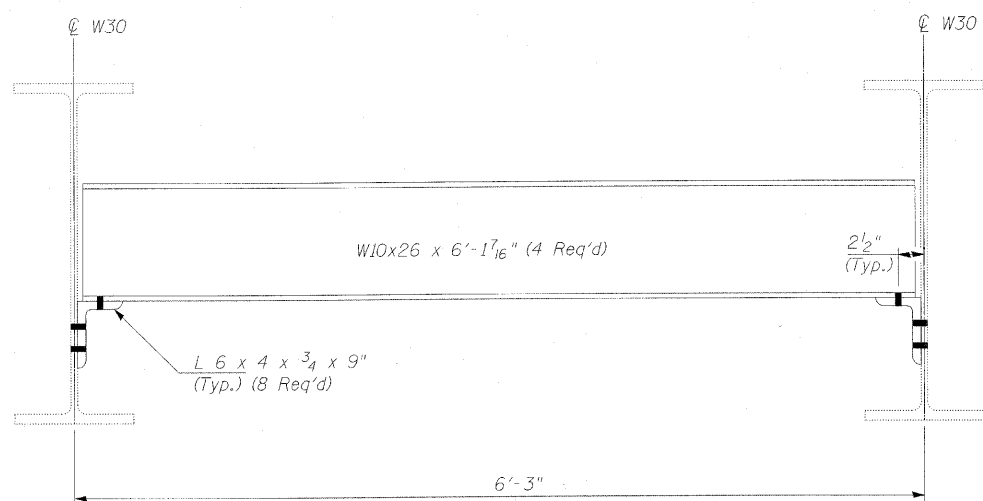
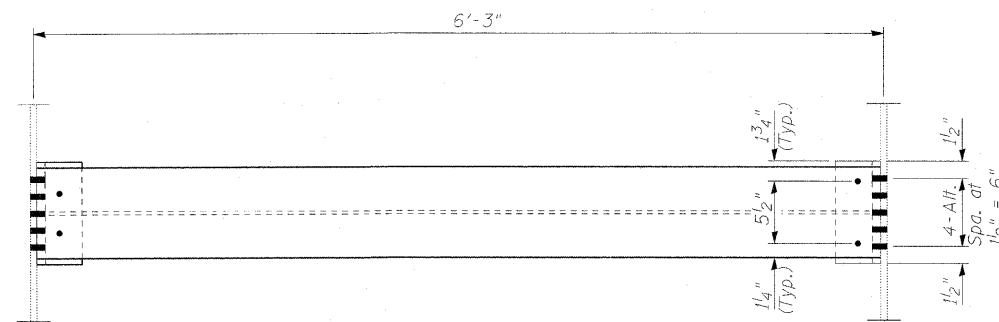
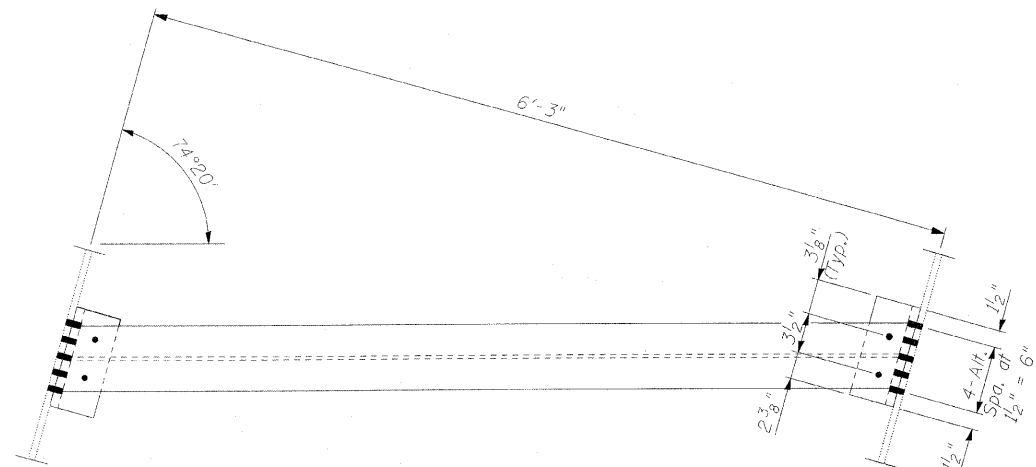


STATE OF ILLINOIS
DEPARTMENT OF TRANSPORTATION



REPAIR DETAIL C

REPAIR DETAIL D

BILL OF MATERIAL

ITEM	UNIT	QUANTITY
Structural Steel Repair	Pound	1,310

DESIGNED <u>JWK</u>	2010
CHECKED <u>JMH</u>	EXAMINED
DRAWN <u>DR</u>	ENGINEER OF STRUCTURAL SERVICES
CHECKED <u>JWK</u>	PASSED
	ENGINEER OF BRIDGES AND STRUCTURES

Notes:
Natural camber of new beam shall be placed upward for fabrication.
Field drill holes in new diaphragms using existing Clip L's as template.
Strengthening Web Plates not shown.
Cost of removal and disposal of existing diaphragms is included with Structural Steel Repair.

For beam end strengthening plates details see sheet S6

REPAIR DETAIL C AND D
STRUCTURE NO. 049-0012

SHEET NO. S7 OF S15 SHEETS	F.A.U. RTE.	SECTION	COUNTY	TOTAL SHEETS	SHEET NO.
	2711	K-VB-I	LAKE	21	10
			CONTRACT NO. 60J63		
ILLINOIS FED. AID PROJECT					