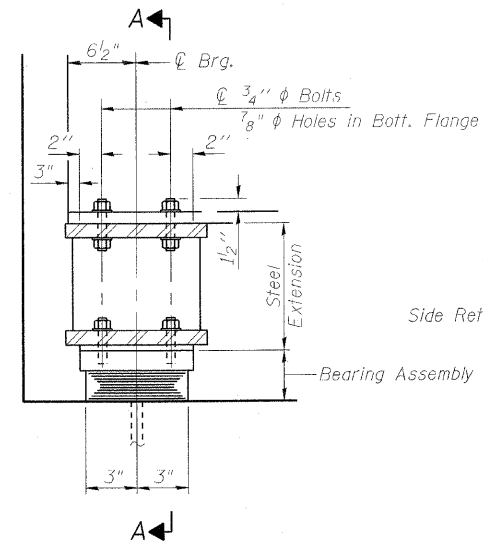
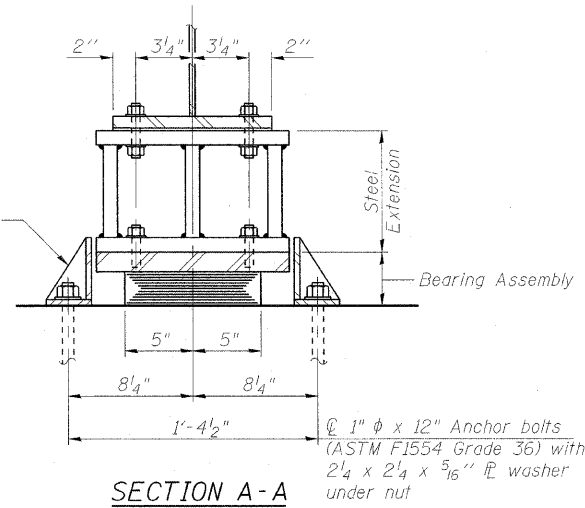


STATE OF ILLINOIS
DEPARTMENT OF TRANSPORTATION

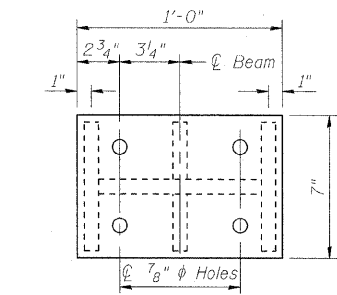


ELEVATION AT ABUT.

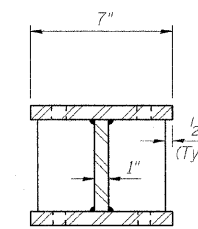


SECTION A-A

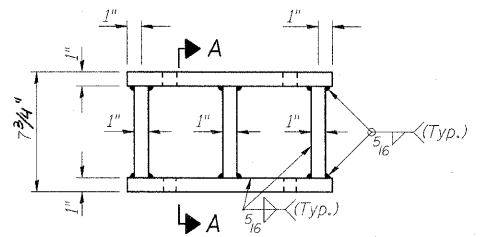
Notes:
Anchor bolts shall be ASTM F1554 all-thread (or an Engineer-approved alternate material) of the grade(s) and diameter(s) specified. ASTM A307 Grade C anchor bolts may be used in lieu of ASTM F1554 Grade 36 (Fy=36ksi). The corresponding specified grade of AASHTO M314 anchor bolts may be used in lieu of ASTM F1554.
Anchor bolts for side retainers may be cast in place or installed in holes drilled before or after members are in place.
Drilled and set anchor bolts shall be installed according to Article 521.06 of the Standard Specifications.
Side retainers and other steel members required for the bearing assembly shall be included in the cost of Elastomeric Bearing Assembly, Type I.



PLAN STEEL EXTENSION

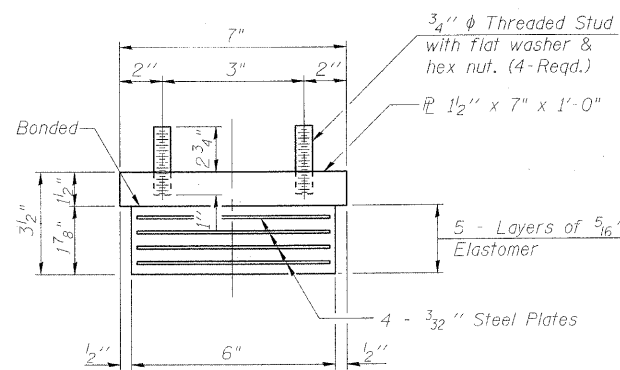


SECTION A-A



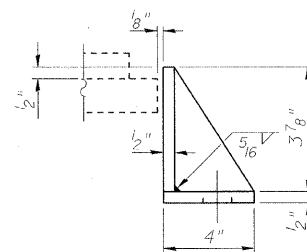
ELEVATION STEEL EXTENSION

TYPE I ELASTOMERIC EXP. BRG.



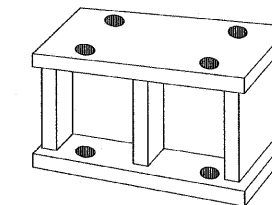
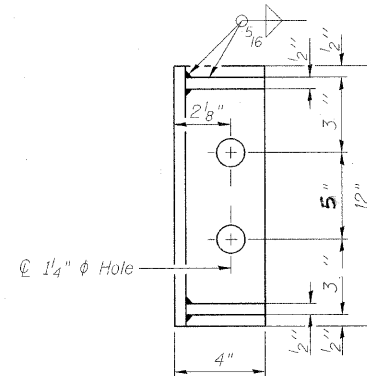
BEARING ASSEMBLY

Note:
Shim plates shall not be placed under Bearing Assembly.



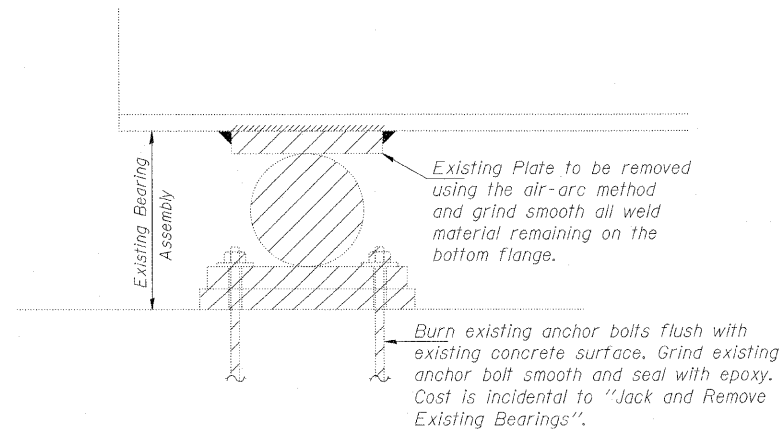
SIDE RETAINER

Equivalent rolled angle with stiffeners will be allowed in lieu of welded plates.



FABRICATED STEEL EXTENSION

Note: Prior to ordering any material, the Contractor shall verify in the field all bearing height and shim thickness dimensions.



EXISTING BEARING REMOVAL DETAIL

INTERIOR GIRDER REACTION TABLE

		Abutment
R_{DL}	(k)	11.7
R_{SDI}	(k)	4.7
R_{LL}	(k)	30.9
R_{Imp}	(k)	9.1
R_{TOTAL}	(k)	56.4

Minimum Jack Size = 22 TONS

BILL OF MATERIAL

Item	Unit	Total
Elastomeric Bearing Assembly Type I	Each	6
Jack and Remove Existing Bearings	Each	6
Furnishing and Erecting Structural Steel	Pound	510
Anchor Bolts, 1" φ	Each	12

BEARING DETAILS - SOUTH ABUTMENT
STRUCTURE NO. 049-0012

DESIGNED <i>JWK</i>	2010
CHECKED <i>JMH</i>	EXAMINED
DRAWN <i>DR</i>	ENGINEER OF STRUCTURAL SERVICES
CHECKED <i>JWK</i>	PASSED
	ENGINEER OF BRIDGES AND STRUCTURES

SHEET NO. S13 OF S15 SHEETS	F.A.U. RTE.	SECTION	COUNTY	TOTAL SHEETS	SHEET NO.
	2711	K-VB-I	LAKE	21	16
	CONTRACT NO. 60J63				
ILLINOIS FED. AID PROJECT					