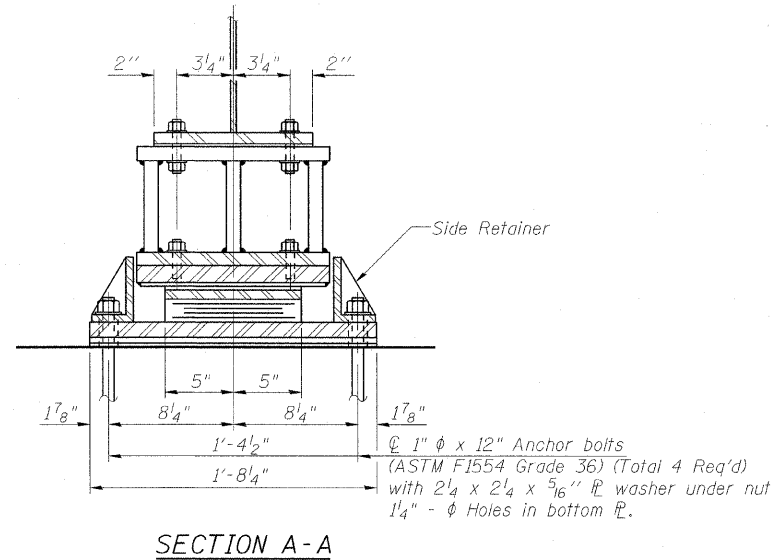
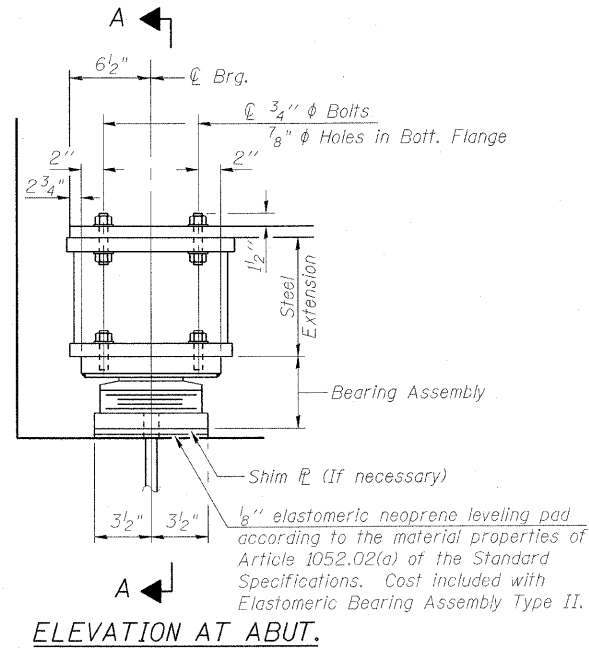
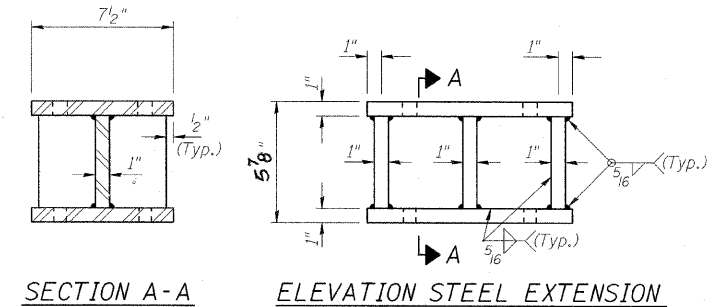
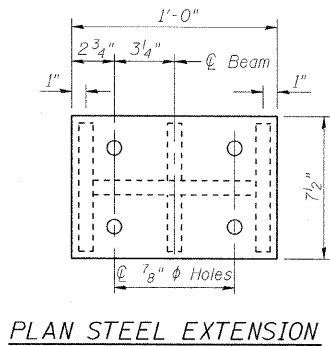


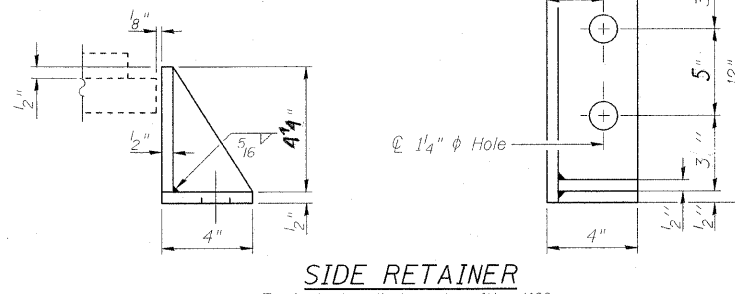
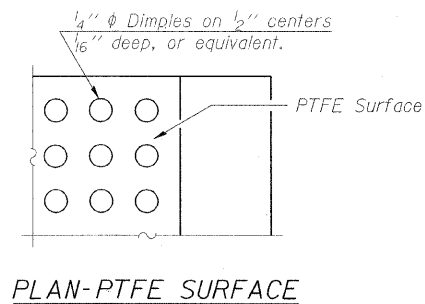
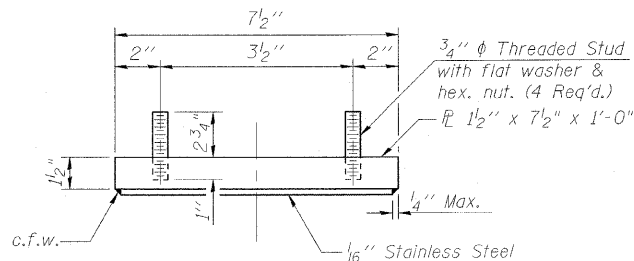
STATE OF ILLINOIS
DEPARTMENT OF TRANSPORTATION



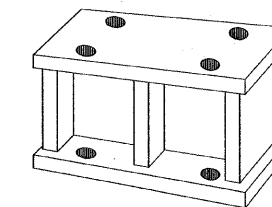
Notes:
Anchor bolts shall be ASTM F1554 all-thread (or an Engineer-approved alternate material) of the grade(s) and diameter(s) specified. ASTM A307 Grade C anchor bolts may be used in lieu of ASTM F1554 Grade 36 (Fy=36ksi). The corresponding specified grade of AASHTO M314 anchor bolts may be used in lieu of ASTM F1554.
Anchor bolts for Type II bearings shall be placed in holes drilled in the concrete through holes in the bottom bearing plate after members are in place. Side retainers shall be placed after bolts are installed.
Drilled and set anchor bolts shall be installed according to Article 521.06 of the Standard Specifications.
Side retainers and other steel members required for the bearing assembly shall be included in the cost of Elastomeric Bearing Assembly, Type II.
The 1/8" PTFE sheet shall be bonded directly to the top steel plate with a two-component, medium viscosity epoxy resin, conforming to the requirements of the Federal Specification MMM-A-134, Type I. The bond agent shall be applied on the full area of the contact surfaces.
Bonding of 1/8" PTFE sheet during vulcanizing process will be permitted provided the process and method of adjusting assembly height is approved by the Engineer.



TYPE II ELASTOMERIC EXP. BRG.

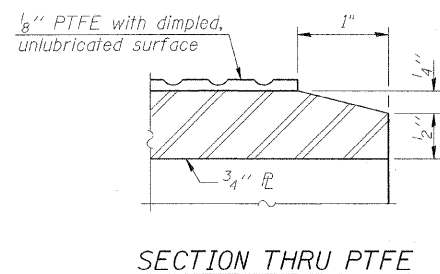
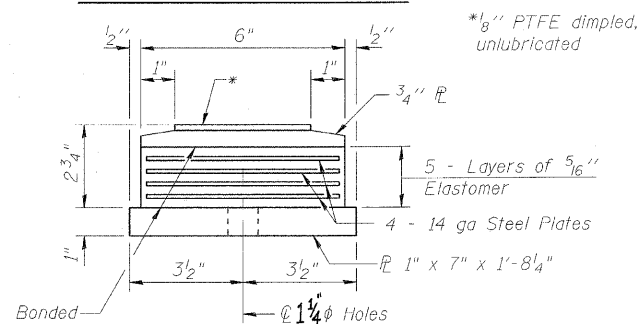


FABRICATED STEEL EXTENSION



Note: Prior to ordering any material, the Contractor shall verify in the field all bearing height and shim thickness dimensions.

FABRICATED STEEL EXTENSION



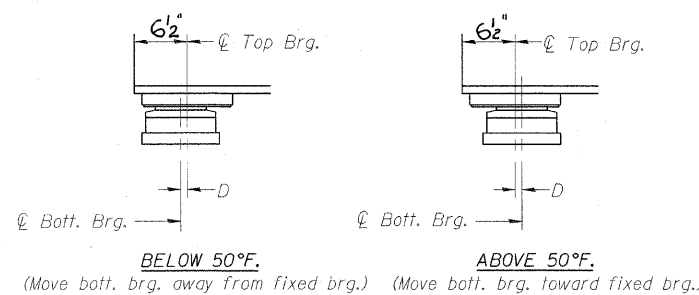
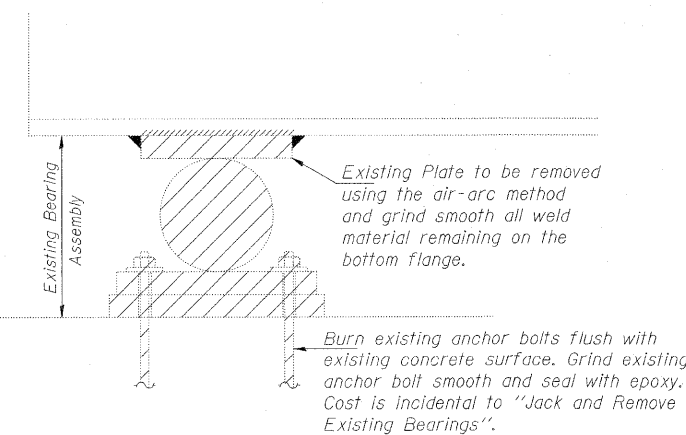
EQUIVALENT ROLLED ANGLE WITH STIFFENERS
will be allowed in lieu of welded plates.

INTERIOR GIRDER REACTION TABLE	
Abutment	
R _{DL} (k)	11.7
R _{SDL} (k)	4.7
R _{LL} (k)	30.9
R _{Imp} (k)	9.1
R _{TOTAL} (k)	56.4

Minimum Jack Size = **22 TONS**

BILL OF MATERIAL

Item	Unit	Total
Elastomeric Bearing Assembly Type II	Each	6
Jack and Remove Existing Bearings	Each	6
Anchor Bolts, 1" φ	Each	12
Furnishing and Erecting Structural Steel	Pound	530



SETTING ANCHOR BOLTS AT EXP. BRG.

D = 1/8" per each 100' of expansion for every 15° temp. change from the normal temp. of 50°F.

**BEARING DETAILS - NORTH ABUTMENT
STRUCTURE NO. 049-0012**

DESIGNED JWK	2010
CHECKED JMH	EXAMINED
DRAWN DR	PASSED
CHECKED JWK	ENGINEER OF STRUCTURAL SERVICES
	ENGINEER OF BRIDGES AND STRUCTURES

SHEET NO. S14 OF S15 SHEETS	F.A.U. RTE. 2711	SECTION K-VB-I	COUNTY LAKE	TOTAL SHEETS 21	SHEET NO. 17
	CONTRACT NO. 60J63				
ILLINOIS FED. AID PROJECT					