

STATE OF ILLINOIS  
DEPARTMENT OF TRANSPORTATION  
DIVISION OF HIGHWAYS

**PROPOSED  
HIGHWAY PLANS**

FAU ROUTE 1238 IL 176 (SCRANTON AVE)  
SECTION C-RS-8  
US 41 TO SHERIDAN ROAD  
RESURFACING

LAKE COUNTY  
C-91-256-10

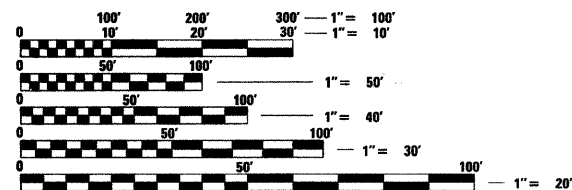
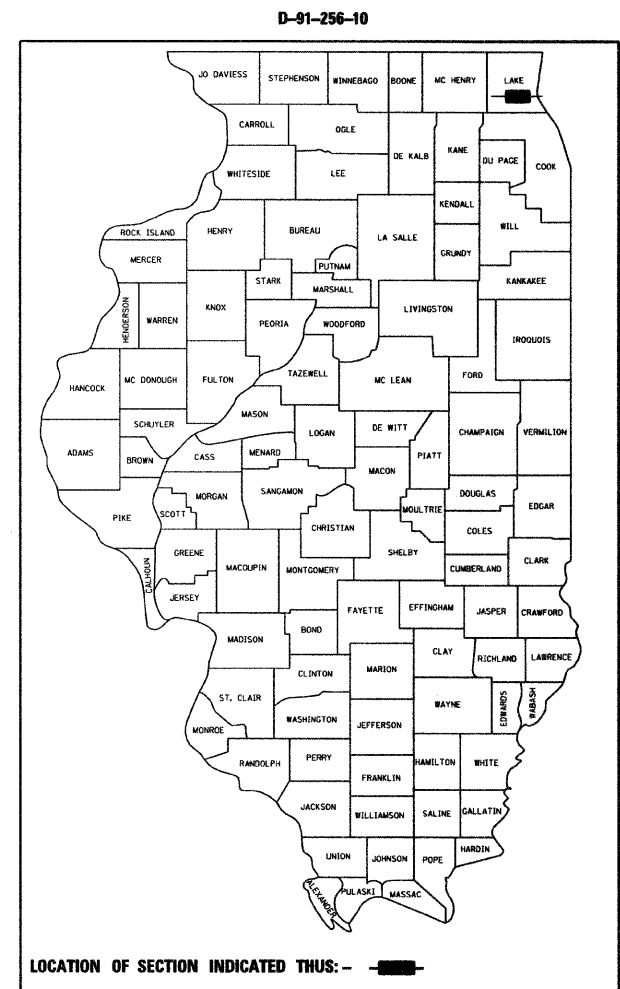
F.A.U. RTE.	SECTION	COUNTY	TOTAL SHEETS	SHEET NO.
1238	C-RS-8	LAKE	19	1
		ILLINOIS	CONTRACT NO. 60J66	

FOR INDEX OF SHEETS, SEE SHEET NO. 2

**TRAFFIC DATA**

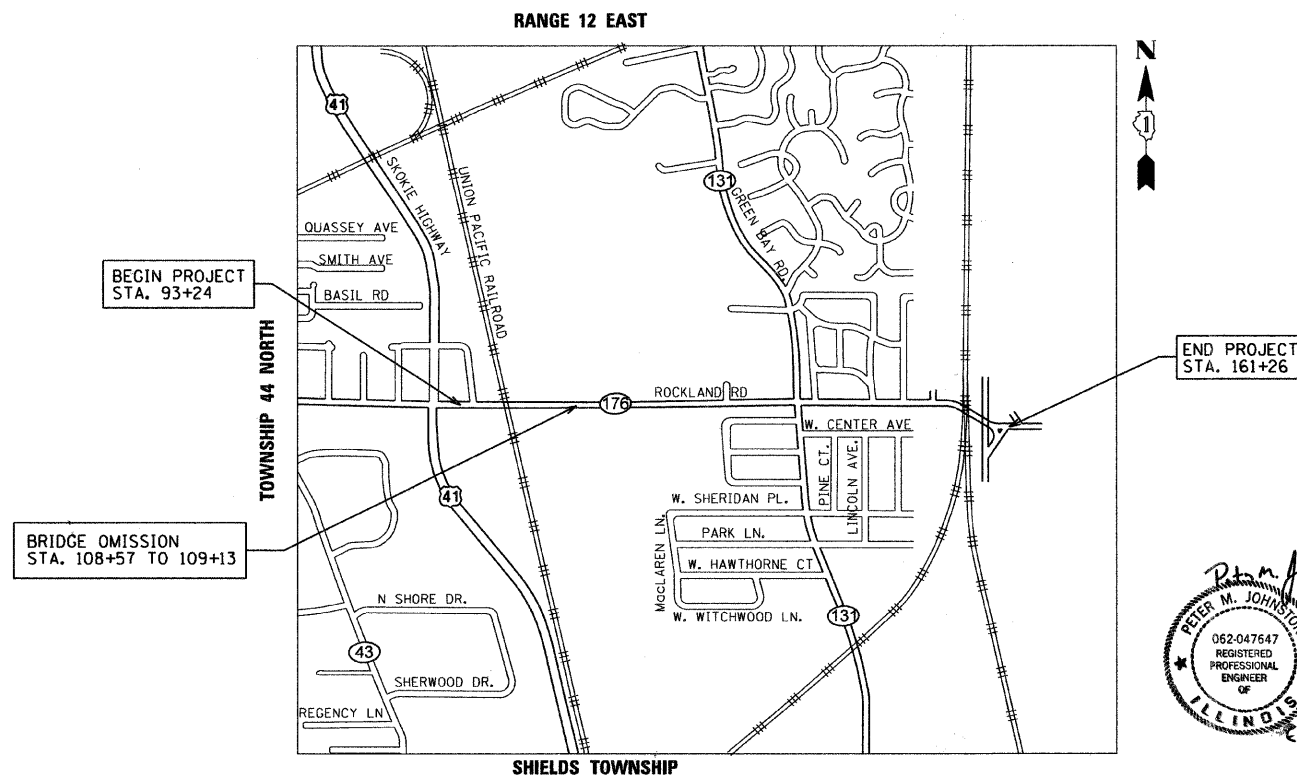
EXISTING ADT = 15,000 (2007)  
SPEED LIMIT = 40 MPH

THE IMPROVEMENT IS LOCATED WITHIN  
THE VILLAGE OF LAKE BLUFF



FULL SIZE PLANS HAVE BEEN PREPARED USING STANDARD ENGINEERING SCALES. REDUCED SIZED PLANS WILL NOT CONFORM TO STANDARD SCALES. IN MAKING MEASUREMENTS ON REDUCED PLANS, THE ABOVE SCALES MAY BE USED.

J.U.L.I.E.  
JOINT UTILITY LOCATION INFORMATION FOR EXCAVATION  
1-800-892-0123  
OR 811



PROJECT ENGINEER: PETER JOHNSTON (GRAEF) 773-399-0112  
PROJECT MANAGER: KEN ENG (IDOT) 847-705-4247

CONTRACT NO. 60J66

GROSS LENGTH = 6,802 FT. = 1.29 MILES  
NET LENGTH = 6,746 FT. = 1.27 MILES

**GRAEF** 8501 W. Higgins Road; Suite 280  
Chicago, Illinois 60631  
(773) 399-0112

*Peter M. Johnston*  
2-5-10  
PETER M. JOHNSTON  
062-047647  
REGISTERED  
PROFESSIONAL  
ENGINEER  
OF  
ILLINOIS  
Expires 11-30-11

STATE OF ILLINOIS  
DEPARTMENT OF TRANSPORTATION  
DIVISION OF HIGHWAYS

SUBMITTED FEBRUARY 9, 2010

*Diana M. O'Keefe*  
DEPUTY DIRECTOR OF HIGHWAYS, REGION ENGINEER  
March 19, 2010

*Scott E. Stiel, P.E.*  
ENGINEER OF DESIGN AND ENVIRONMENT  
March 19, 2010

*Christine M. Reed*  
DIRECTOR OF HIGHWAYS, CHIEF ENGINEER

PRINTED BY THE AUTHORITY  
OF THE STATE OF ILLINOIS