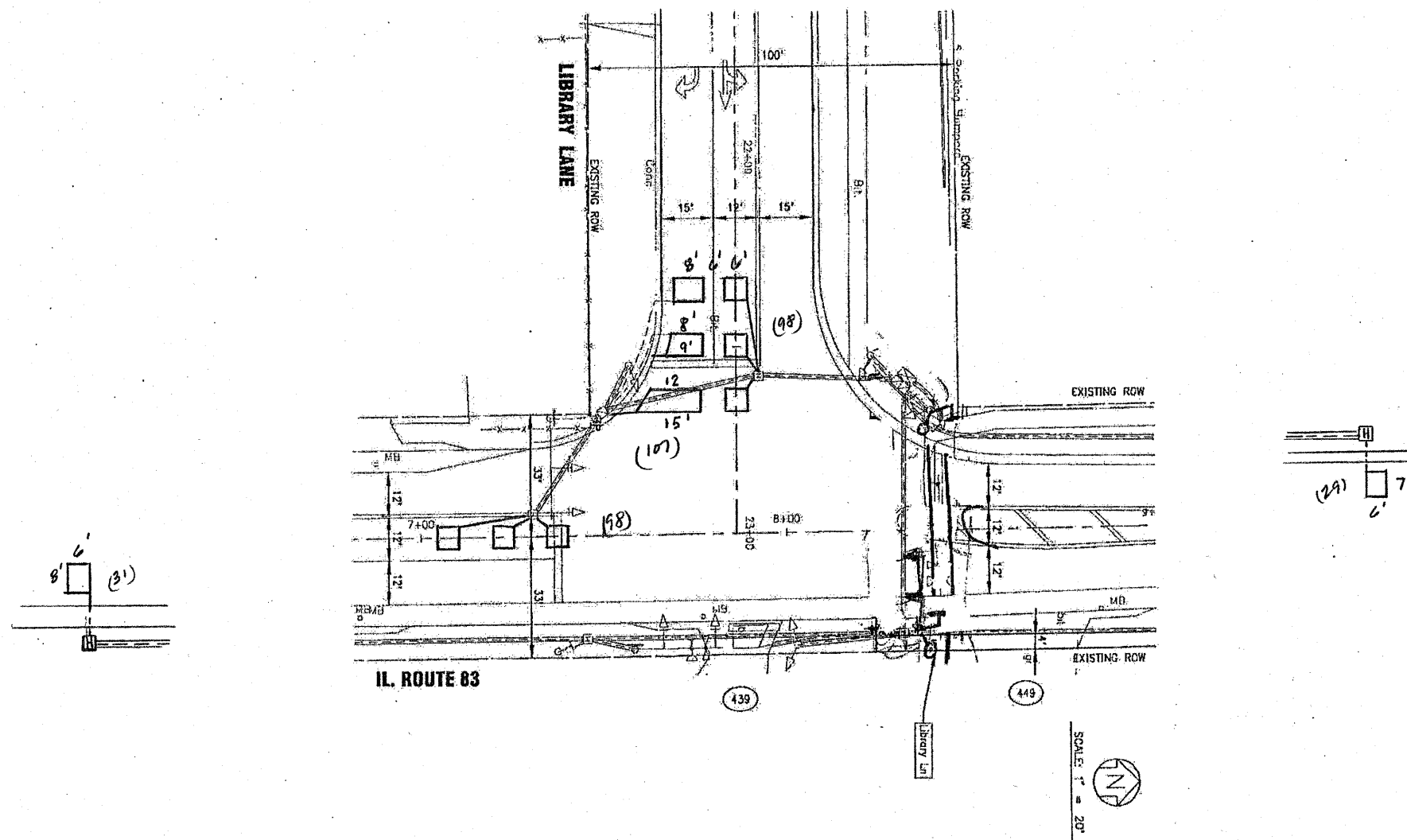


TRAFFIC SIGNAL LEGEND

	PROPOSED	EXISTING
DETECTOR LOOP		
SIGNAL HEAD		
G.S. CONDUIT IN TRENCH OR PUSHED		
SIGNAL HEAD WITH BACKPLATE		
RACEWAY FOR MAGNETIC DETECTOR, TYPE I OR II		
VEHICLE DETECTOR, NON-COMPENSATED MAGNETIC TYPE		



THIS PLAN IS FOR THE SOLE PURPOSE OF DETECTOR LOOP REPLACEMENTS ONLY

REPLACE ALL DETECTOR LOOPS AS SHOWN (WITHIN THE RESURFACING LIMITS)

CODE	QUANTITY	UNIT	ITEM
86600600	363	FOOT	DETECTOR LOOP, REPLACEMENT

FILE NAME =	USER NAME = kenthaphixaybc	DESIGNED - BCK	REVISED -	STATE OF ILLINOIS DEPARTMENT OF TRANSPORTATION	DISTRICT ONE - DETECTOR LOOP REPLACEMENT ILL. ROUTE 83 @ LIBRARY LANE	F.A.V. RTE. =	SECTION =	COUNTY =	TOTAL SHEETS =	SHEET NO. =	
c:\pwork\pwidot\KANTHAPHIXAYBC\01126	truffic.legend.v7.dgn	DRAWN - BCK	REVISED -			866	3 RS-3	LAKE	35	20	
	PLOT SCALE = 3/4" = 1' IN.	CHECKED - DAD	REVISED -			CONTRACT NO.					
	PLOT DATE = 4/3/2009	DATE -	REVISED -			FED. ROAD DIST. NO. ILLINOIS FED. AID PROJECT					