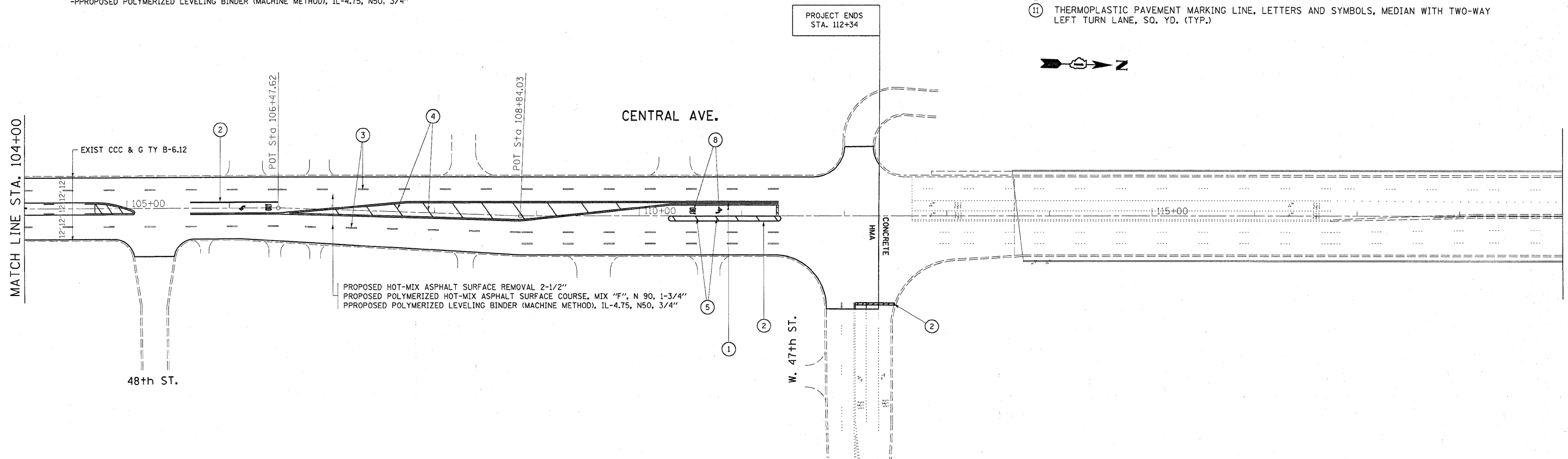


NOTE FOR ALL SIDE STREETS:  
RESURFACING LIMITS ARE AT THE RADIUS RETURNS UNLESS OTHERWISE NOTED  
-PROPOSED HOT-MIX ASPHALT SURFACE REMOVAL 2-1/2"  
-PROPOSED POLYMERIZED HOT-MIX ASPHALT SURFACE COURSE, MIX "F", N 90, 1-3/4"  
-PROPOSED POLYMERIZED LEVELING BINDER (MACHINE METHOD), IL-4.75, N50, 3/4"

- LEGEND**
- ① THERMOPLASTIC PAVEMENT MARKING LINE, 4", DOUBLE YELLOW CENTERLINE 11" C-C (TYP.)
  - ② THERMOPLASTIC PAVEMENT MARKING LINE, 6", WHITE LEFT TURN LANE (TYP.)
  - ③ THERMOPLASTIC PAVEMENT MARKING LINE, 4", SKIP DASH WHITE LANE LINE 10'-40' (TYP.)
  - ④ THERMOPLASTIC PAVEMENT MARKING LINE, 12", YELLOW DIAGONAL 45° 75' CTRS. (TYP.)
  - ⑤ THERMOPLASTIC PAVEMENT MARKING LINE, 12", WHITE DIAGONAL 45° 8' CTRS. (TYP.)
  - ⑥ THERMOPLASTIC PAVEMENT MARKING LINE, 6", WHITE DOTTED 2'-6' (TYP.)
  - ⑦ THERMOPLASTIC PAVEMENT MARKING LINE, 24", WHITE SOLID STOP BAR (TYP.)
  - ⑧ THERMOPLASTIC PAVEMENT MARKING LINE, LETTERS & SYMBOLS, SQ. YD. (TYP.)
  - ⑨ THERMOPLASTIC PAVEMENT MARKING LINE, 6" SOLID WHITE, CROSSWALK (TYP.)
  - ⑩ THERMOPLASTIC PAVEMENT MARKING LINES, MEDIAN, 4" YELLOW 5-1/2" C-C (TYP.)
  - ⑪ THERMOPLASTIC PAVEMENT MARKING LINE, LETTERS AND SYMBOLS, MEDIAN WITH TWO-WAY LEFT TURN LANE, SQ. YD. (TYP.)



FILE NAME =	USER NAME = byunsh	DESIGNED -	REVISED -	<b>STATE OF ILLINOIS DEPARTMENT OF TRANSPORTATION</b>	<b>CENTRAL AVENUE 47TH STREET TO 63RD STREET ROADWAY AND PAVEMENT MARKING PLAN</b>			F.A.P. RTE. =	SECTION	COUNTY	TOTAL SHEETS	SHEET NO.
ci:\pw_work\pwsdot\byunsh\d0180187\0132110	sh:plan.dgn	DRAWN -	REVISED -		366	0203 RS-2	COOK	23	9	CONTRACT NO. 60J99		
PLDT SCALE = 50.0000' / IN.		CHECKED -	REVISED -		ILLINOIS FED. AID PROJECT							
PLDT DATE = 2/9/2010		DATE -	REVISED -		SCALE:	SHEET NO.	OF	SHEETS	STA.	TO STA.		